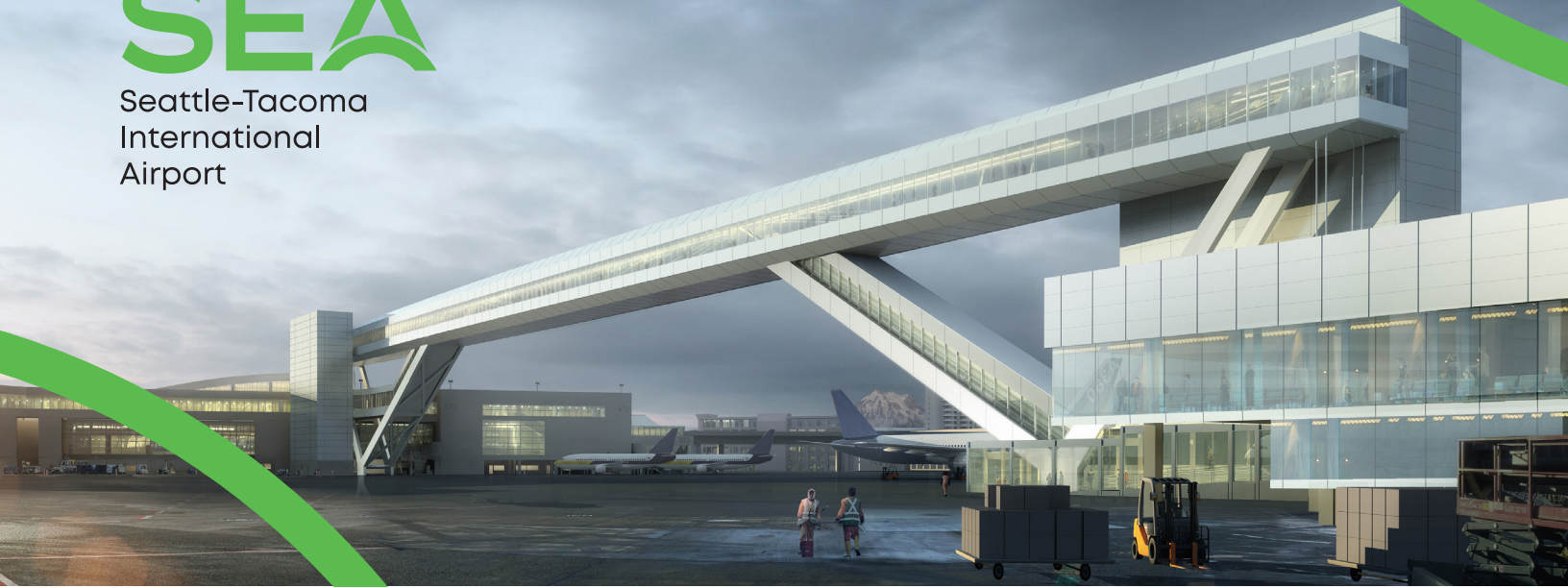


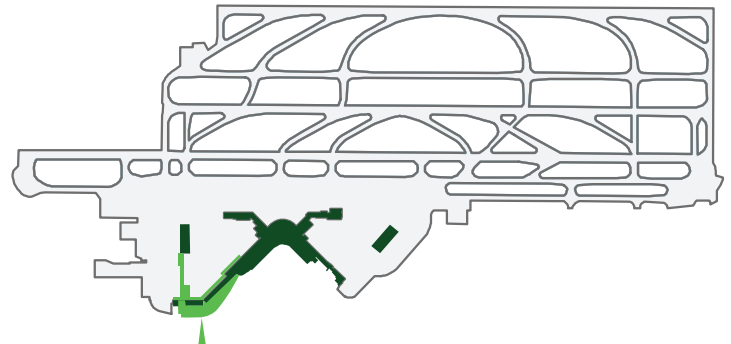


Seattle-Tacoma  
International  
Airport



# International Arrivals Facility

The Port of Seattle is building a new, expanded International Arrivals Facility (IAF) at Seattle-Tacoma International Airport (SEA) to meet growing regional demand for international service, enhance the passenger experience, advance the Puget Sound region as a leading tourism and business gateway and serve the traveling public well into the future. The current 1970s vintage facility in the South Satellite and the existing Federal Inspections area (commonly known as customs) are beyond peak capacity. The new facility will also help achieve the Port’s Century Agenda goal to increase the number of international flights and destinations over the next 25 years.



International Arrivals Facility Footprint

## Benefits of new international arrivals facility



**Nearly Double International Capable Gates (from 12 to 20)**

- Increase passenger capacity by more than double to 2,600 passengers per hour.
- Incorporating enhanced technologies for faster passport check clearance.
- Increase size and number of bag claim carousels from four to seven.
- Reduce minimum passenger connection time from 90 to 75 minutes.



**Planned Facility Improvements**

- The IAF will be a new multi-level, 450,000 square-foot facility located east of the current Concourse A.
- An iconic aerial walkway, which will span 900 feet across and 85 feet above the existing taxi lane, will connect arriving international passengers from the South Satellite across the top of Concourse A to the new IAF.



**Estimated Project Costs**

The guaranteed maximum price for the IAF is \$968 million. Funding for the project will come from a combination of airport generated revenues, passenger facility charges (PFCs) and revenue bonds. As with virtually all airport projects, no tax-payer dollars will be used to fund the project.

## Additional Details about the New Facility

- The iconic aerial walkway will be prefabricated at the north end of the airport, then transported to the south end overnight for installation in order to reduce impacts to taxiway use.
- A new security corridor along the face of the existing Concourse A will allow eight international wide-body aircraft gates to access directly into the IAF. These gates will also allow dual use for domestic flights into Concourse A.
- As part of the Port of Seattle's emphasis on environmental stewardship and sustainability, the project is designed to achieve LEED V4 (Leadership in Energy and Environmental Design, Version 4) Silver certification from the United States Green Building Council.
- The baggage claim devices will nearly triple in size, from four devices with 668 linear feet in the current space to seven devices and 1,806 linear feet!

## Current SEA Airport traffic facts

- SEA Airport is one of the fastest growing large hub airports in North America increasing passenger traffic by 41 percent in the last five years, jumping to the eighth busiest airport in the U.S.
- International passenger activity requiring customs clearance at SEA nearly doubled in the past 10 years, growing 92 percent from 2008 to 2018.
- A consultant study estimates each new international route generates \$74 million annual economic impact to the region.
- Located exactly halfway between London and Tokyo, SEA Airport is the closest U.S. West Coast gateway to both Europe and Asia.
- Over the past 10 years, SEA has welcomed 20 new intercontinental services including new routes to Beijing, Dubai, Frankfurt, Dublin, Reykjavik, Shanghai, and Shenzhen.

## Project Timeline

Construction Begins/Groundbreaking: **Q3 2017** —————→ **Projected IAF Opening: 2021**

## Our Community

### **PATH, an international nonprofit and leader in global health innovation**

*"PATH employees work in 70 countries around the world. We depend upon international flights to reach vulnerable populations, collaborate with global health leaders around the world and to work efficiently. For an organization doing our work, international access can literally save more lives."*

- Steve Davis, President and CEO

### **Seattle Southside Regional Tourism Authority**

*"SEA Airport is an economic engine for our region and the increased passenger totals are a driver for more jobs and benefits to business owners who rely on travelers. With more than 1,200 new hotel rooms joining the Seattle Southside region by 2018, more jobs will be created now and into the future and the airport is a big reason for this economic surge."*

- Katherine Kertzman, President & CEO, Seattle Southside Regional Tourism Authority

### **Radisson Hotel Seattle Airport**

*"The addition of the new International Terminal at SEA is great for our hotel, community and the families who are employed with us. Busy airports assist in creating higher occupancy resulting in increased wages, additional jobs and a strong economy."*

-Bob Sulkosky, Director of Sales

