



Sustainability: Boeing Commercial Aviation

Port of Seattle; August 2023

Rae Lutters
ecoDemonstrator Program Manager, Chief Engineer
The Boeing Company



BOEING'S SUSTAINABILITY GOALS



**EMPLOYEE SAFETY
& WELL-BEING**



**GLOBAL AEROSPACE
SAFETY**



**EQUITY, DIVERSITY
& INCLUSION**



**SUSTAINABLE
OPERATIONS**



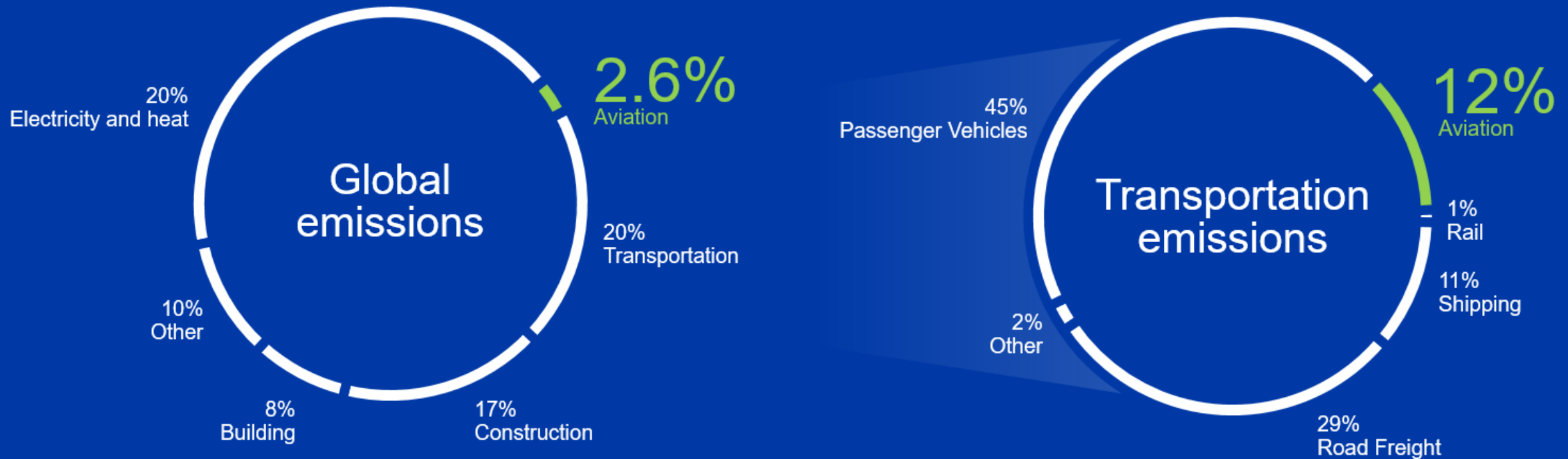
**INNOVATION &
CLEAN TECHNOLOGY**



**COMMUNITY
ENGAGEMENT**

S U S T A I N A B L E A E R O S P A C E T O G E T H E R

Aviation contributes 2.6% of total global emissions



OUR STRATEGY TO DECARBONIZE AVIATION



Fleet
renewal

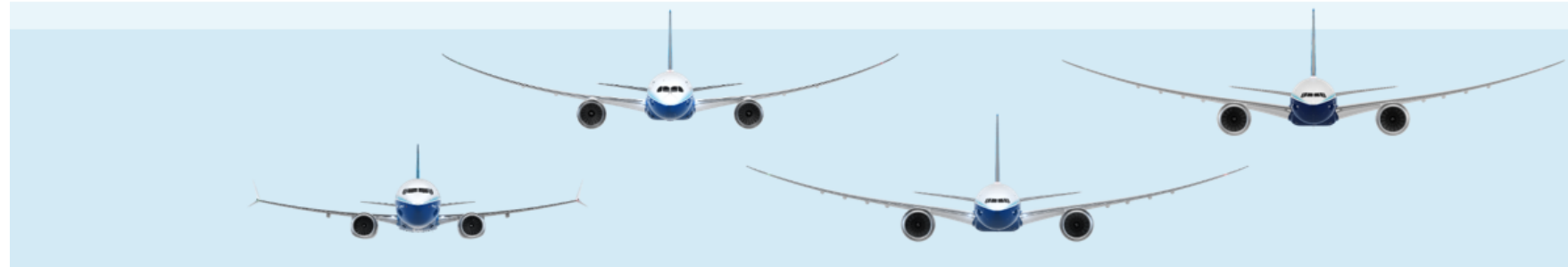
Operational
efficiency

Renewable
energy

Advanced
technology

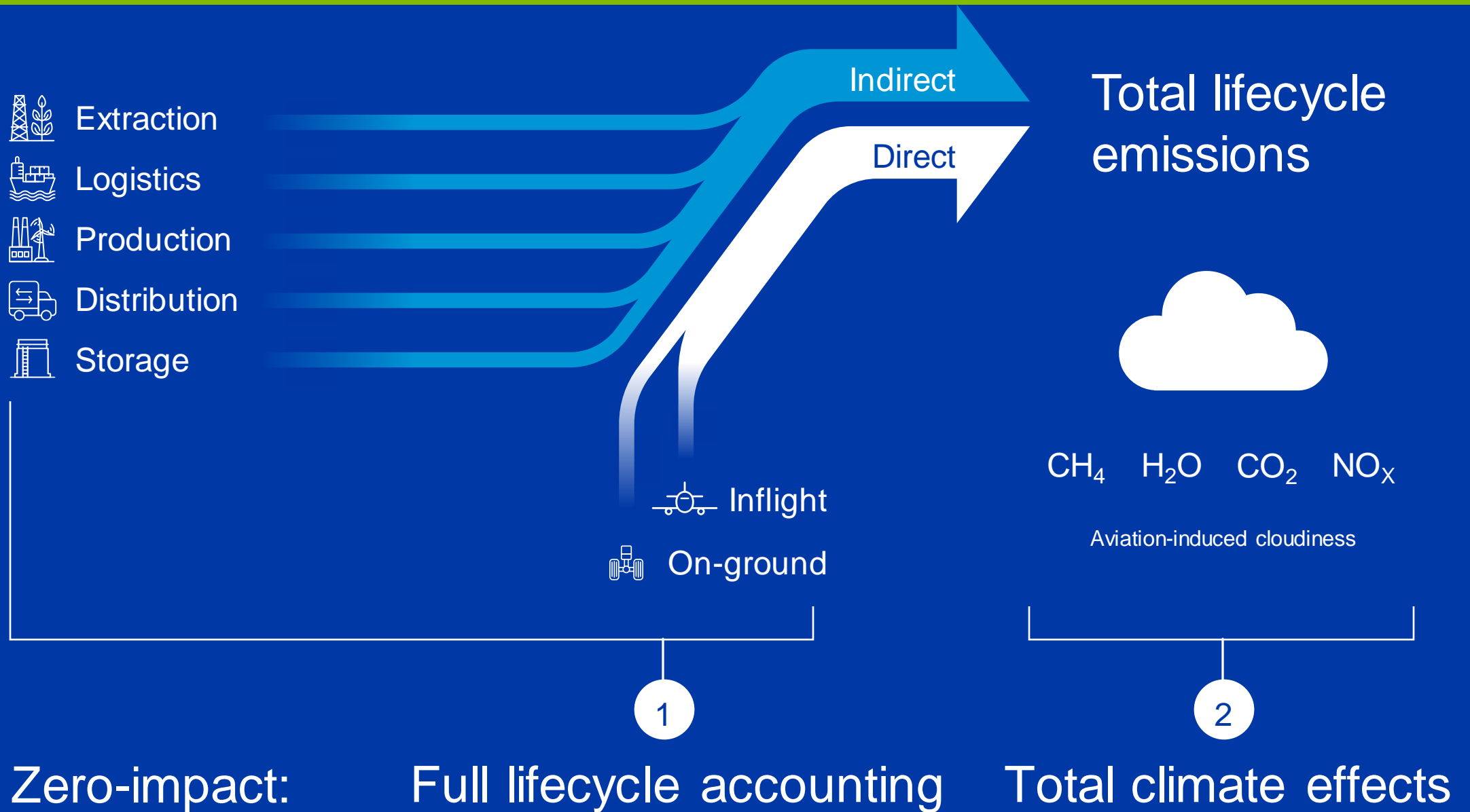
FLEET RENEWAL - INNOVATION & PERFORMANCE

Advancing Technology, Lowering Environmental Impact

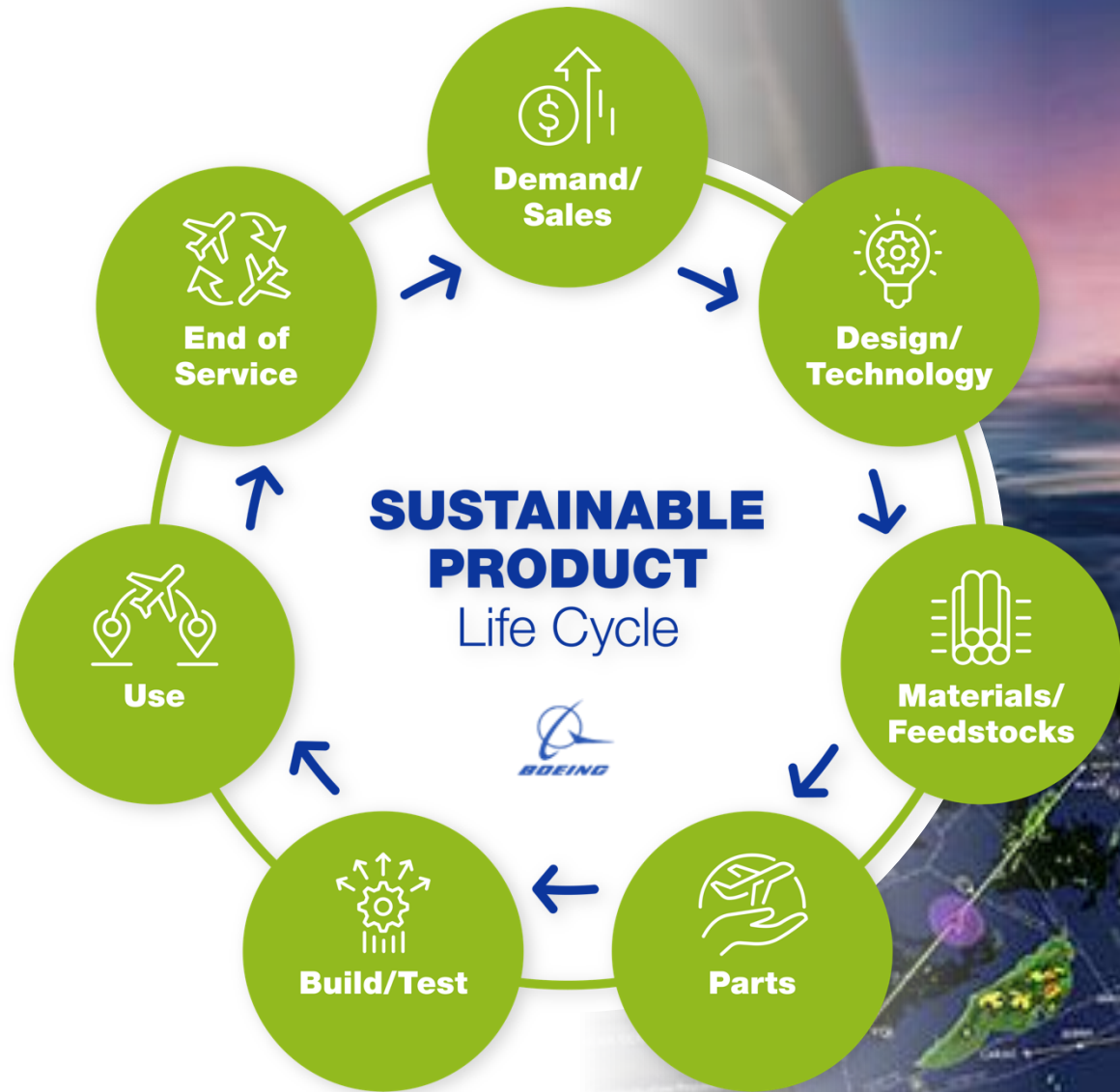


	737 MAX	787	777X	777-8F
REDUCTION IN FUEL AND CO₂	20% Reduction	25% Reduction	20% Reduction	30% Reduction
NOISE FOOTPRINT	50% Smaller	50% Smaller	40% Smaller	60% Smaller
	Compared to original Next-Generation 737	Compared to 767-300ER	Compared to 777-300ER	Compared to 747-400F

ZERO CLIMATE IMPACT



SUSTAINABILITY TOGETHER



BOEING ECODEMONSTRATOR PROGRAM

An Enduring Mission

Innovate

Learn by doing, discover quickly

Collaborate

With airlines, government, suppliers, academia, industry


Accelerate


Speed path to products, services and production




Accelerating Innovation

250+ technologies tested with focus in:

 Sustainable Aviation Fuel


 Advanced Aerodynamics

 Reduction in Fuel Usage

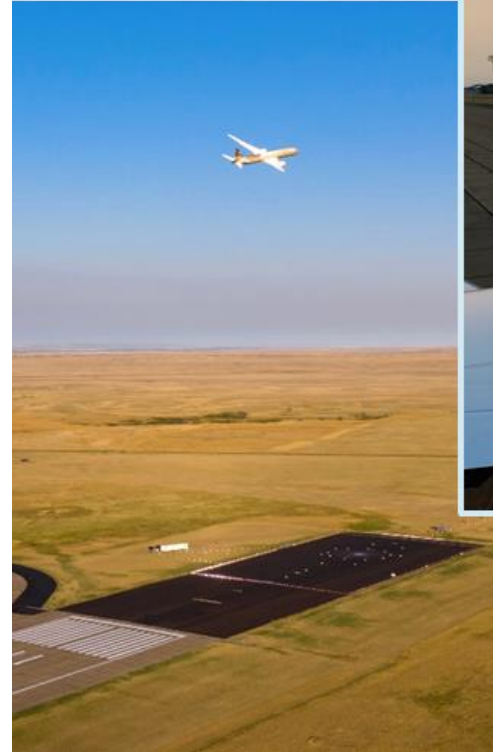
 Customer Support

 Recycled Materials

 Operational Efficiency

 Replacement of Hazardous Materials

 Community Noise



1/3 of technologies now implemented on products and services

Boeing ecoDemonstrator SAF Emissions Testing



2021 Boeing ecoDemonstrator 737-9

- CFM LEAP-1B
- 100% Paraffinic SAF Ground Test and Flight Demonstration
- 4 SAF blends tested
- 1 successful 100% SAF demo flight





777-200ER / Trent 800



2022 Boeing ecoDemonstrator

4 Fuels Tested

- Locally sourced Jet-A
- Low Sulfur Jet-A
- 50% Lower Sulfur Jet-A & 50% Paraffinic SAF
- 100% Paraffinic SAF



787-10 / GEnx-1B

