

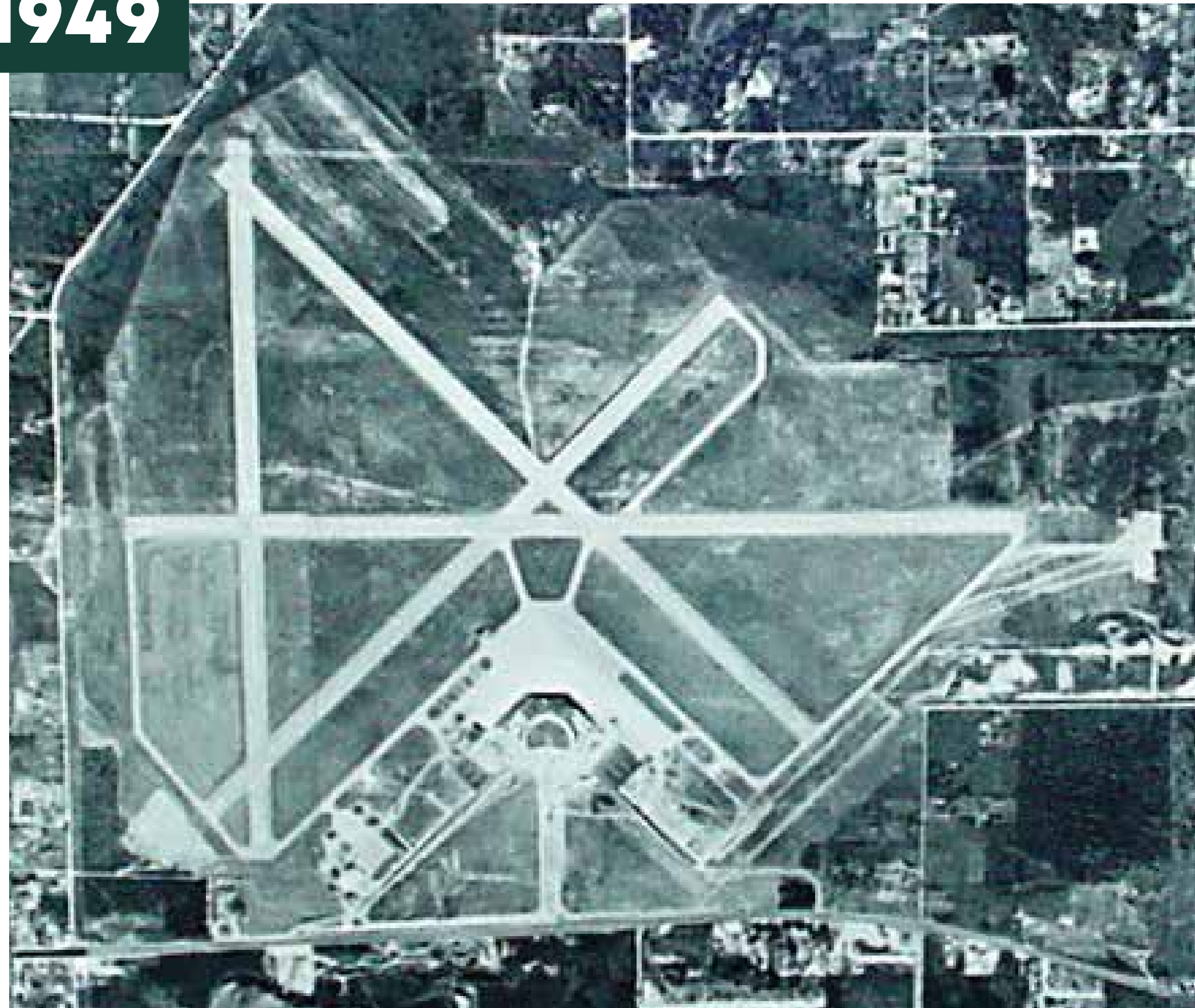
Major Upgrade SEA Projects

- 1** Concourse A Building Expansion for Lounges
- 2** C Concourse Expansion
- 3** S Concourse Evolution

CONSTRUCTION MILESTONES

- 1943** Construction of new airport begins at Bow Lake, current airport site.
- 1944** Airport dedicated as Seattle-Tacoma Airport with arrival of United Airlines DC-3 Mainliner. Passengers wait in "The Pantry," a Quonset hut with a wood-burning potbellied stove.
- 1949** New Main Terminal opens and renamed Seattle-Tacoma International Airport. Annually serves 130,000 passengers.
- 1973** Major construction program completed: New Main Terminal, North & South Satellites, underground Satellite Transit System, parking garage, and airport road system.
- 1992** Total renovation and expansion of Concourses B, C, and D completed. Airport road system.
- 2004** Completion of new South Main Terminal and Concourse A
- 2005** Central Terminal expansion completed
- 2008** New third runway opens
- 2018** D Annex opens
- 2021** New IAF and the renovated North Satellite are completed.
- 2023** Central Terminal renovation completed

1949



2024

