



Port of Seattle Fire Department

2023 ANNUAL REPORT





Table of Contents

Message From the Chief	5
About the Port of Seattle Fire Department	7
Fire Department Operations	9
Response Information	10
Jurisdiction Information	12
Fire Prevention Division	14
Westside Fire Station Opening	15
Training Division	16
Triennial Exercise	18
Employee Recognitions	20
Community Involvement	22
Affiliations and Partnerships	24





Message from the Chief

At the conclusion of each year I reflect on our accomplishments and growth and try to define it in one word. This past year, the word that comes to mind is, COMMUNITY.

I am proud to say that regardless of outside influence and challenges, we have clearly defined and created our own accepting, welcoming, and nurturing community of highly effective individuals that are the envy of and center for others to rally around. Most recently, Local 1257 hosted their annual Pancake Breakfast in support of the Northwest Burn Foundation and Toys for Tots. This event resulted in donations of over 800 new and unwrapped gifts for Toys for Tots and over \$4,000 for the Burn Foundation. Everyone in attendance could feel the spirit, camaraderie, and joy displayed during this great event. Each participant was grinning ear to ear and the positive energy was palpable.

If 2023 is any indicator of the culture of the department, we are headed in the right direction and our future is bright. This past year we have hired nine personnel, celebrated three retirements, and held in-person awards and promotion ceremonies. It has been a slow return to normal after COVID, but it was very nice to get to engage and connect with friends, family, and co-workers in person.

We had promotions at the Assistant Chief, Battalion Chief, and Captain ranks adding new energy and a fresh perspective into the supervisory levels. With the Assistant Chief promotion, we had a change in Union Leadership and transitioned to a new Union/Management relationship with open, honest, and constructive conversations that have resulted in new programs and initiatives that continue to grow the department.

In summary, our department continues to develop and grow with each coming year. 2023 was an amazing year for the Port of Seattle Fire Department and if I am being honest, 2024 is going to build upon and unleash even more positive energy and accomplishments that we will all be proud of. To say I am proud to be the Fire Chief of the best Fire Team in the game, is an understatement. Our entire team make me proud each and every day.



Fire Chief Randy Krause



About the Port of Seattle Fire Department

Since its inception in 1955, the Port of Seattle Fire Department has served the employees, tenants, contractors, and traveling public at Seattle-Tacoma International Airport (SEA). Our primary mission is Aircraft Rescue Fire Fighting (ARFF) however, we also provide emergency medical services, structural fire suppression, hazardous material and technical rescue response. The airport and related properties are geographically smaller than many cities, consisting of approximately 2,800 acres, however it serves approximately 46 million passengers annually. This averages to over 126,000 people traveling through SEA every day which is more than the entire population of Renton, WA.

The department has a busy Fire Prevention division which reviews new construction and renovation plans, provides code guidance, performs building and fueling inspections, and manages a robust fire alarm system. Additionally, the Training division, Administration, and Mechanic's Shop assure members are prepared, trained, and fully equipped to provide exceptional service.

In 2023, there were 98 uniformed personnel and 10 non-uniformed personnel on staff.

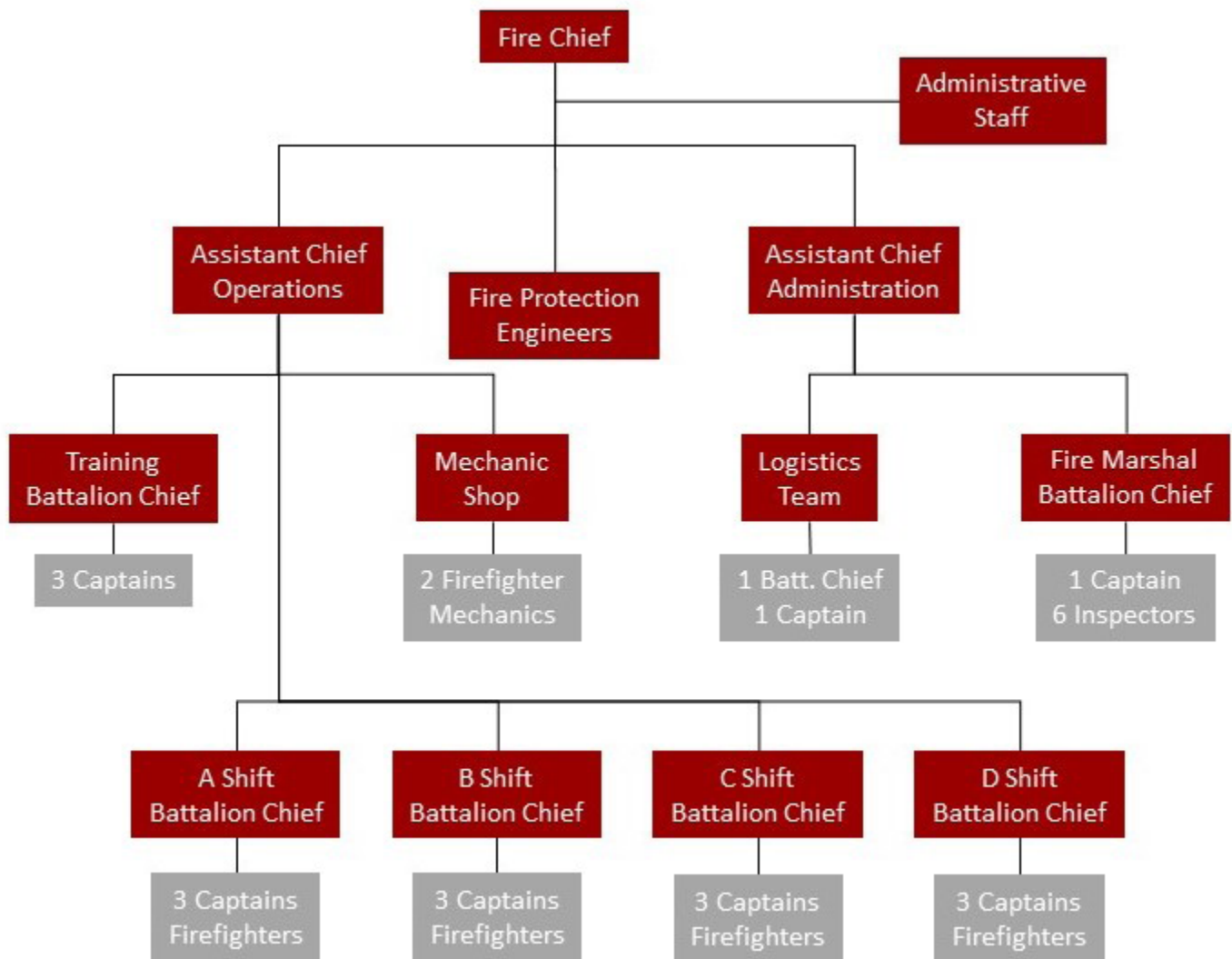


OUR RESPONSIBILITIES

- Aircraft Rescue Fire Fighting (ARFF)
- Emergency Medical Services
- Structural & Vehicle Fires
- Brush and Outdoor Fires
- Motor Vehicle Accidents
- Hazardous Material Response
- Technical Rescue Response
- Odor Investigations
- Standbys and Safety Efforts
- Life Safety Inspections
- Permitting
- Public Education and Recruitment Events

About the Port of Seattle Fire Department

ORG CHART



Department Operations

The Fire Suppression Division is comprised of personnel and apparatus designated to respond to the various emergencies and calls for service at Seattle-Tacoma International Airport. The Division is separated into four platoons and each shift is staffed by one Battalion Chief serving as the shift commander, three Captains and a minimum of 14 Firefighters.

Our department is equipped to quickly respond to any aircraft emergency. Two ARFF apparatus are stationed at each fire station on opposite ends of the airfield which allows us to respond to all locations within three minutes or less. The Fire Department recently participated in an annual response drill to the intersection of taxiway Juliet and runway 16R. The first truck arrived and initiated fire attack in 2 minutes 15 seconds!

We staff two fire engines who are ready to respond to aircraft incidents as well as structure or vehicle fires, hazardous materials, technical rescues, fire alarms, and medical incidents.

The Port of Seattle Fire Department maintains a Hazardous Material Response Team of at least three technicians and a fully equipped response vehicle. Our technicians train monthly with our neighboring fire departments as part of a Zone 3 response team. Having a multijurisdictional response team allows us to deploy adequate resources to quickly mitigate emergencies at SEA airport and the surrounding community. While life safety and property conservation are our highest priority, restoring airport operations and public travel as quickly and safely as possible is always a strategic objective.

The department also has a fully equipped Technical Rescue team for high/low angle and confined space rescue. The airport presents unique challenges and response locations such as underground utility vaults, storage tanks, and multiple story structures. Our specialists are prepared to respond to them all.

Personnel who have specialty certifications are balanced among the shifts to ensure operational needs are met 24/7. Special positions such as driving the Aircraft Rescue Fire Fighting (ARFF) Apparatus and serving on the Technical Rescue and Hazardous Material Teams are earned after completing rigorous coursework, practical assessments, and completion of continuous training requirements. We currently have 44 hazardous materials technicians and 26 technical rescue technicians.



2023 Incident Response Information

EMERGENCY RESPONSES

Data shows there is direct correlation between the number of people traveling through SEA and the number of incidents the fire department responds to. Approximately 51 million passengers traveled through SEA in 2023, a 10.7% increase from the year before. The Port of Seattle Fire Department responded to 5330 calls for service, representing a 13.31% increase over 2022 .



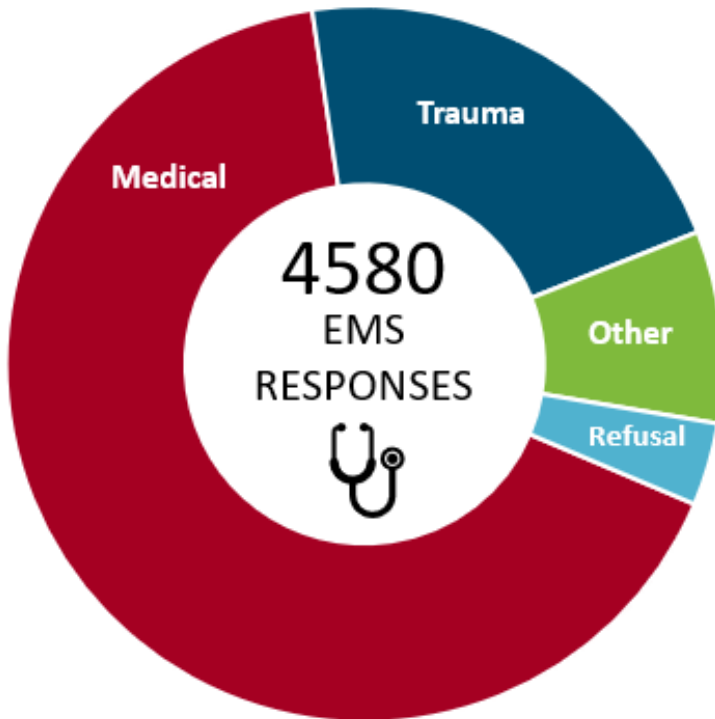
Among the various calls, Port of Seattle Fire Department responded to:

- 44 - Alert 1 and Alert 2 Aircraft Incidents
- 22 - Structure Fire Calls
- 233 - Requests for Mutual Aid
- 87 - HazMat, Chemical, or Fuel Leak Calls
- 29 - CPR Calls . . . Half involved public use AEDs!

To further advance public safety, Port of Seattle Fire maintains a team dedicated to providing first aid and AED training to SEA employees and tenants.

EMERGENCY MEDICAL CARE

PATIENT PRIMARY COMPLAINTS



PATIENT DISPOSITION



In 2023, Emergency Medical Responses made up approximately 87% of the total number of emergency incidents. This represents an increase of nearly 4% over previous years.

Port of Seattle Fire Department personnel are Firefighter EMTs, working within the tiered emergency medical system of King County EMS. Two engines and one non-emergent aid car respond to the multitude of calls made by travelers, airline personnel, Port employees and others on and around the airport.

We have mutual aid agreements with King County Medics for paramedic services, as well as private ambulance companies to provide transports to local area hospitals.

Jurisdictional Information

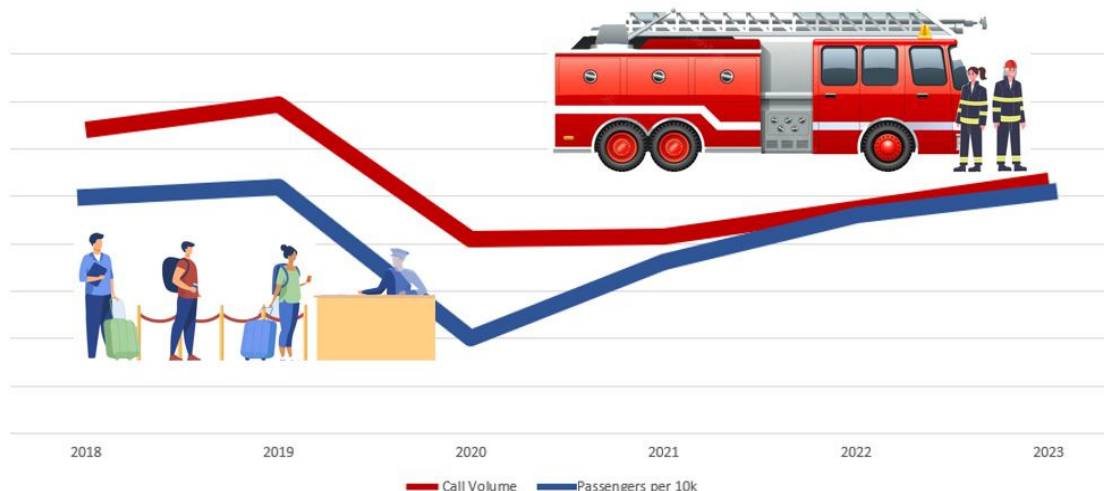
Diverse and Fluctuation Population

As a response area, SEA's population presents both unique challenges and tremendous opportunities to provide exceptional customer service. SEA is the busiest airport in the United States per acre served. This creates additional challenges as many people, planes, and cargo move within a very congested area. These conditions require efficient, effective, and competence to successfully mitigate and manage risks. The fire department team is the best at understanding and addressing the many challenges that our constrained airport presents.

More than 80% of our emergency responses are requests for medical aid and many of those in need of our services are very far from the community they call home. Cultural differences, language barriers, and simply being a plane flight away from trusted family and friends during a medical emergency can be an extremely stressful life event. The anxiety and confusion caused by emergencies in a strange place along with interrupted travel and limited resources can increase the distress on a patient. These medical incidents tend to occur in very public places rather than the privacy of a patient's home which can add an extra layer of complication.

Port of Seattle Fire Department EMTs pride themselves in providing not only life-saving medical care, but also compassion, professionalism, empathy, and exceptional customer service to each unique situation.

As the travel seasons season change and the airport activity increases, so does the activity of the fire department. Historically, data shows a direct correlation between number of passengers in the airport on any given day and the number of medical calls the fire department will receive. While there are other factors that can be identified, such as inclement weather contributing to vehicle accidents, the most prevalent is the swell of population during cruise season.



Airport Operations

Port of Seattle Fire Department's quick response is also key to keeping the airport operational. Whether it's efficient mitigation of emergency incidents or detailed coordination with construction projects, fire department personnel work diligently to maintain business continuity and help keep the airport running and operational.

In 2023, our hazardous response team responded to 19 investigations or hazardous materials incidents. By having a hazardous response team of at least three technicians the Port of Seattle Fire Department can eliminate the long delay of calling for a regional response resource in most cases. Business continuity is our focus as we quickly evaluate the situation and safety to restore operations back to normal.

The Fire Prevention Inspectors and Fire Protection Engineers work closely with Port Construction and contractors to assure the needs of projects are met in a timely fashion. Oftentimes, this involves shifting priorities and adjusting work hours to meet the needs of around the clock construction.

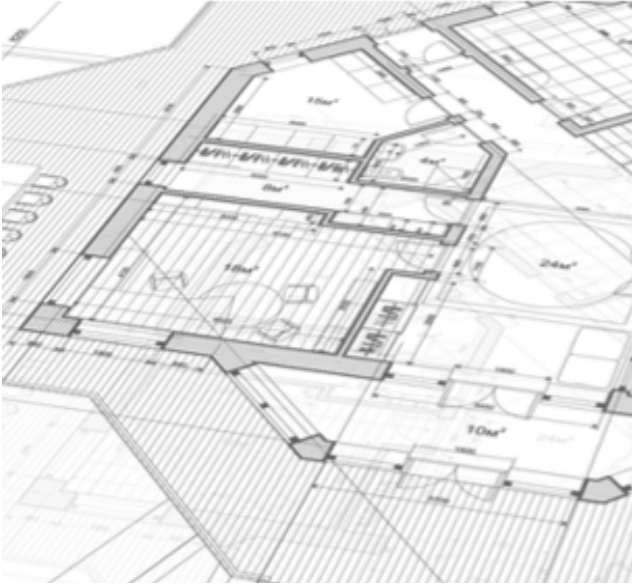
Working with Partner Agencies

Port of Seattle Fire Department maintains a strong relationship with our neighboring agencies within Zone 3. We are often called upon to assist with structure fires, vehicle incidents, hazardous materials calls, and other emergencies in our surrounding communities. We often receive a unique type of request along the I-5 corridor during the dry season. Our ARFF trucks, with their powerful turrets and large water capacity, are requested to extinguish brush fires along the freeway in areas where there is no convenient water source.

In 2023, we responded to 233 incidents providing mutual aid.

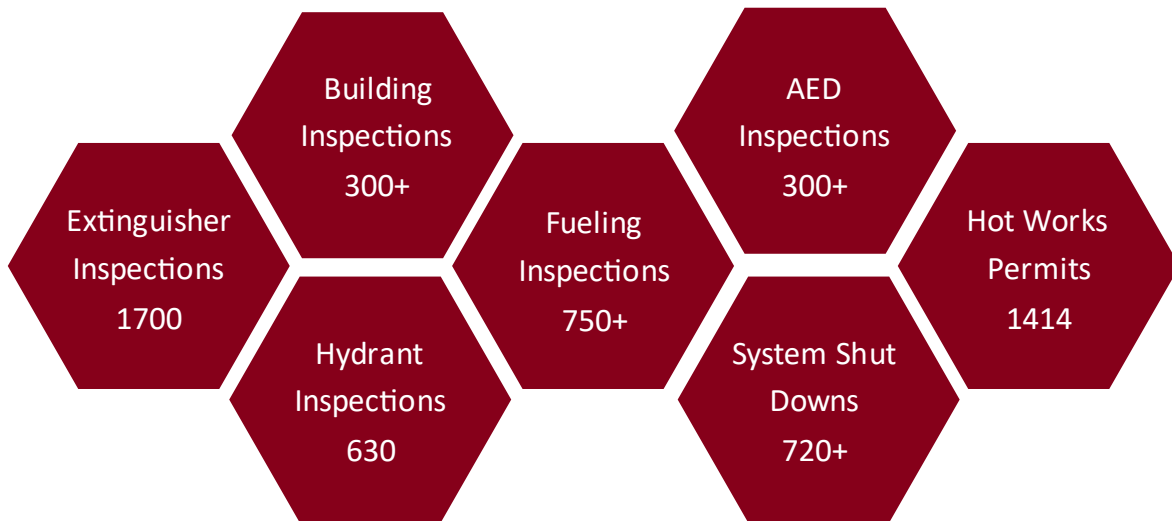


Fire Prevention



Fire Protection Engineering

- Reviews all new construction and renovation plans for Fire & Life Safety compliance
- Integral planning participants of all Capital Building projects
- Consults with contractors for integration in Port Fire Suppression and Alarm systems
- Commission and testing of fire suppression and alarm systems upon completion
- Authorize and approve certificate of occupancy upon project completions



Alarm Management

Installation

- Alarm Technician consults with Plan Review on technical integration of alarm systems
- Installs physical systems and programs monitoring software
- Supports construction contractors

Management

- System integrated with Dispatch, monitoring more than 11,000 devices
- Alarm Technicians maintain both airport and waterfront alarm devices
- Performs regular testing, maintenance, and repairs

New Westside Fire Station



Station 2 Opening

We celebrated the official opening of Fire Station 2 in 2023. Located on the west side of the airfield behind taxiway Quebec, this station houses two ARFF vehicles and the personnel to operate them. The station and fire apparatus were placed in this strategic location to allow for faster response times to the third runway and is particularly beneficial during inclement weather conditions and when low-visibility standbys are required. The new station is staffed with one Captain and four firefighters 24/7.

It was a pleasure to have the support of Port leaders and Commissioners as they gathered in September for the official ribbon cutting ceremony of the building.



Training Division

Continuous Training

- FAA Requirements—100% Compliance for all Uniformed Personnel
- WAC Requirements—99% Completion Rate for all Uniformed Personnel
- Port Requirements—98.5% Completion Rate for all Uniformed Personnel
- SKCFTC Academy—5 Firefighters graduated from Academy
- JATC 3-Year Program—15 firefighters active in program during 2023

Live Fires

Port of Seattle Firefighters completed required live fire training in May 2023. The crews practice both the tactical and practical skills associated with aircraft fire and rescue. These FAA driven drills require live fire and special props that only exist at a few locations. The Port of Seattle Fire Department works with an FAA funded training facility at DFW airport in Dallas, TX to meet our annual training requirements.

Crews demonstrate their firefighting skills and abilities by performing tasks associated with simulated aircraft emergencies using full size training props and real fire. This experience is not only an FAA requirement but also a vital training experience for personnel.



Training Drills

This training is required as part of the FAR 139.139 regulatory requirement and the Port of Seattle Fire Department makes every effort and uses every tool at our disposal to make the experience as realistic for the firefighters as possible.

Night training is conducted to practice their craft in limited light situations. During the day, people normally rely heavily on sight for information. Whereas at night, firefighters and fire officers must rely on coordination, radio communication, previous training and specialized equipment such as FLIR cameras in their response.

These drills involved the use of a mock-up aircraft. Crews performed operational approaches in fire vehicles as if the mock-up aircraft was on fire. They pulled hoses and practiced hand-line operations for firefighting. The mock-up aircraft also served for internal search and rescue training as part of the exercise.

JATC Program

Port of Seattle Fire Department participates with the Washington State Firefighters Joint Apprenticeship Training Committee to provide new firefighters with the training and instruction to set them up for a successful career. This program consists of accredited recruit academy training, hazardous materials training, EMT training, followed by on-the-job training and academic instruction that supplements the craft of firefighting. It provides valuable on-the-job training and offers true-to-life work experience.



AED and First Aid Training Program

For more than a decade, Port of Seattle Fire Department has maintained an extraordinarily high success rate for victims suffering cardiac arrest. This can be attributed to a combination of highly trained EMTs, a worldclass tiered EMS system, AEDs strategically placed in public locations, and a constant effort to train Port employee and tenants CPR and AED usage.

At SEA, 48% of cardiac incidents involve publically available AEDs. This is a far higher percentage than most other locations.

According to the 2022 King County Emergency Medical Services Annual Report; "Only about half of cardiac arrest victims received CPR prior to EMS arrival, and less than 5% received defibrillation prior to EMS arrival."



Triennial Aircraft Collision Exercise



Tri-ACE

In order to maintain their certificate to operate, the Federal Aviation Administration (FAA) requires airports to complete a mock aircraft collision exercise every three years called the Triennial Aircraft Collision Exercise (Tri-ACE). The objective of this exercise is to demonstrate the triage and transfer of victims during a mass casualty incident which tests the communication and preparedness of airport first responders and mutual aid agencies.

On September 14, 2023, the Tri-ACE occurred on the airfield with the use of the Port of Seattle Fire Department's mock aircraft. There were 150 volunteers (badged employees and interns) acting as passengers and crew members of an aircraft incident. Each volunteer was provided a scenario and moulage (injury make up) for triage purposes.

First responders from around the region participated in this year's ground exercise to triage, treat, and transport patients to simulated hospitals. Incident command was managed by Battalion Chief Murry who was assisted by Battalion Chiefs Jewett and Grubb. Battalion Chief Griffin and Captain Nuttall provided assistance from the ECC.

The Tri-ACE is used as an opportunity for staff to test the airport's emergency response plan, incident command structure, communications, and external relations procedures. The planning and execution of this event is a massive undertaking that requires countless hours and tremendous coordination among many employees.



Employee Recognitions

2022 Firefighter of the Year

Department members voted Firefighter Matt Sweeny the 2022 Firefighter of the Year. During the nomination process his peers noted Firefighter Sweeny's leadership, work ethic, and commitment to his role as a Driver/Operator subject matter expert. His peers stated, "Firefighter Sweeny shows excellence in every aspect of his job. He constantly goes above and beyond to improve this department through creating presentations, leading training, and is always the first to step up to any task. He is a leader and a great human being."

A celebration was held at the Fire Station where he was presented with an award from the department and gift check from Local 1257. Firefighter Sweeny recently participated in the promotional exam for the position of Captain, and it is no surprise that he achieved the highest score. It is expected that Firefighter Sweeny will soon be Captain Sweeny and there is no doubt he'll do an exceptional job!



New Hires

- Cunningham, T - Firefighter
- Dourado, L. – Firefighter Mechanic
- Fleig, J. – Alarm Technician
- Gade, E. - Firefighter
- Hawes, L. – Alarm Technician
- Kirk, S - Firefighter
- Pagaduan, L. - Firefighter
- Soper, A. - Firefighter
- Stark, E - Firefighter

Promotions



Battalion Chief Grubb



Captain Crippen



Captain Harguess

Retirements



Firefighter Bruce Bratz

FF Bratz was a staple at the Port of Seattle Fire Department since 1980. He mentored dozens of firefighters and was always happy to help. His knowledge, experience, and even demeanor is missed.



Alarm Technician Greg Carbaugh

In more than 30 years at the Port of Seattle, Greg Carbaugh touched literally every area of the airport. We cannot express how valuable his wealth of information, work accuracy, and tireless effort to update and maintain the fire alarm systems was to the whole airport.



Battalion Chief Stephanie McGinnis

B.C. McGinnis moved steadily through the ranks during her 24 years with the department. She became the first female Battalion Chief in our department. We miss her leadership, guidance and positive attitude.

Community Involvement

Camp Eyabsut

Camp Eyabsut is summer camp to provide positive experiences that benefit burn-injury youth. It's a very unique and amazing place where children come together to learn, grown, and create life long friendships. Port of Seattle Fire Department, in partnership with the Northwest Burn Foundation, have long supported the camp with fund and volunteer efforts.



Partnership with Peru

Assistant Chief Todd Starkey and Firefighter Fredy Esquivel attended the 75th anniversary of the Lima, Peru Fire Department's Magdalena 36. Their attendance was a special request by the Peruvian Consulate and the Bomberos/Firefighters of Lima, Peru.

The invitation recognized the history and continued efforts of the Port of Seattle Fire Department and other Washington State agencies who actively support the Bomberos of Lima, Peru. The Washington State Council of Firefighters and numerous fire department agencies have donated to the Peruvian firefighters with retired uniforms, bunker gear, and fire apparatus.

Peru is a country where fire services are entirely volunteer operated and the fire resources are funded through international donations. When equipment used by the Port of Seattle Fire Department exceeds Federally regulated expirations, it must be decommissioned and would typically go into storage or sent to a landfill. Because Peru doesn't comply with the same standards and the equipment is still operational, donating the expired materials to aid the firefighters in Peru can make a huge difference.

Both Assistant Chief Starkey and Firefighter Esquivel were impressed by the professionalism and dedication of the Bomberos of Magdalena 36 and all the others they met.



Pancake Breakfast & Toys for Tots

Toys for Tots is a program run by the U.S. Marine Corps Reserves to provide toys, books, and other gifts to children in need during the holidays. The Port of Seattle Fire Department and 'Military and Veterans at the Port' organized donation boxes for the collection of toys again in 2023.

Port of Seattle Fire Department combined their annual charity Pancake Breakfast with an opportunity to have pictures taken with Santa (it was really our very own Assistant Chief Starkey...shhh, don't tell!). Toys were collected along side Santa at the event, as well as all the toys provided by the firefighters and staff at the department. We're so excited to say the donations for 2023 at Port of Seattle exceeds those of last year.



Affiliations and Partnerships

Airport Council International (ACI)
American Association of Airport Executives
ARFF Working Group
Center for Disease Control - Seattle
FAA Advisory Panel
International Fire Service Accreditation Congress (WA)
International Fire Service Training Association
King County Emergency Medical Services
King County Fire Chiefs Association
King County Fire Marshals
King County Operations Chiefs Association
King County Public Health
National Fire Protection Agency
South King County Fire Training Consortium
Washington State Fire Chiefs Association
Washington State L&I and Firefighter JATC





