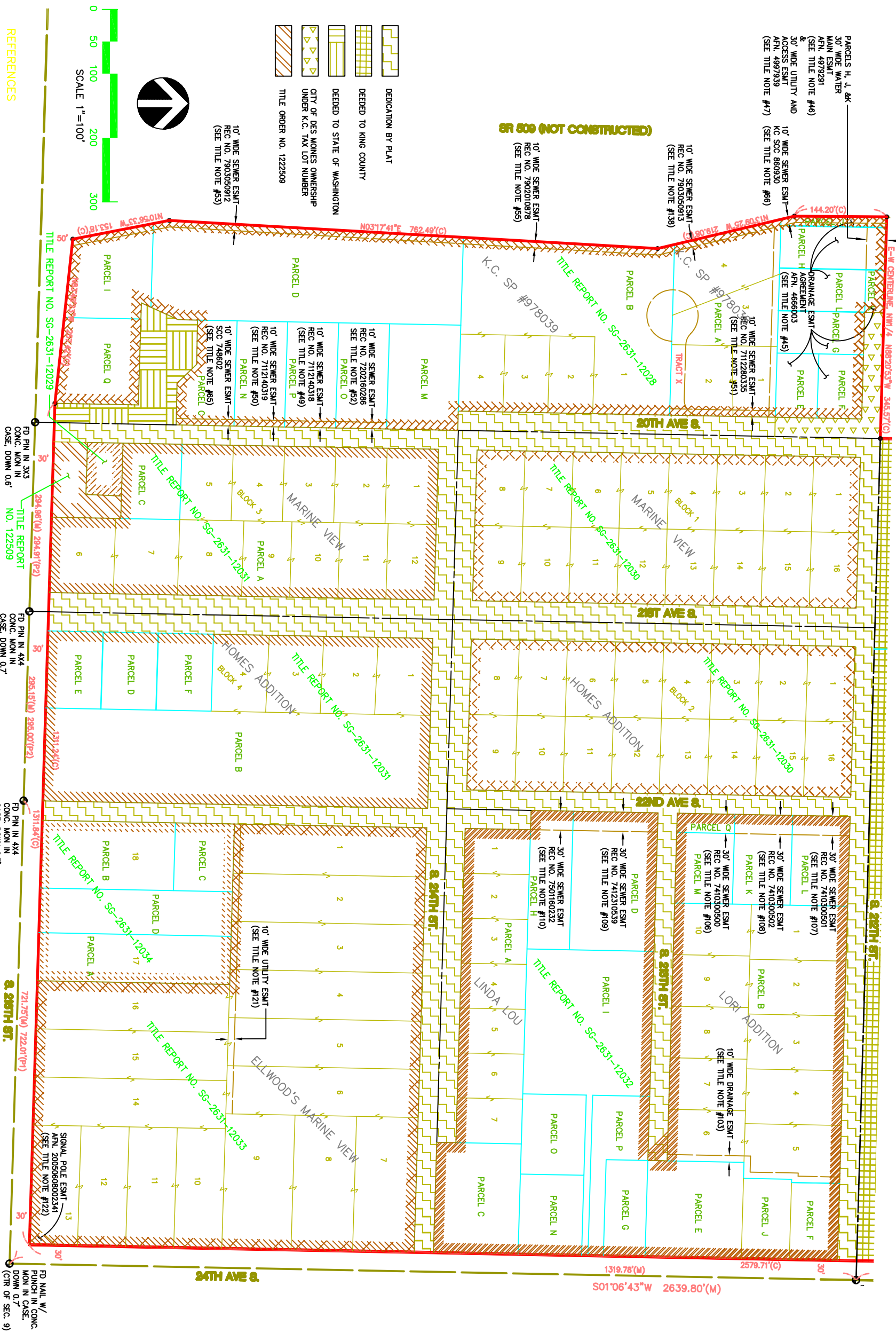
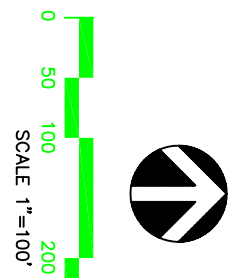


PORT OF SEATTLE, EASEMENT AND STREET EXHIBIT
 PORTION OF THE N.W. 1/4, SEC. 9 AND S.W. 1/4, SEC. 4, TWP. 22 N., RNG. 04 E., W.M.
 CITY OF DES MOINES, KING COUNTY, WASHINGTON



- DEDICATION BY PLAT
- DEDICATED TO KING COUNTY
- DEDICATED TO STATE OF WASHINGTON
- CITY OF DES MOINES OWNERSHIP UNDER K.C. TAX LOT NUMBER
- TITLE ORDER NO. 1222509



- REFERENCES**
- (P1) PLAT OF ELLWOOD'S MARINE VIEW, VOL. 47 OF PLATS, PAGE 6, DECEMBER 28, 1949, AUDITOR'S FILE NO. 3971473.
 - (P2) PLAT OF MARINE VIEW HOMES ADDITION, VOL. 56 OF PLATS, PAGE(S) 90-91, JANUARY 5, 1956, AUDITOR'S FILE NO. 4651624.
 - (R1) WASHINGTON STATE DEPARTMENT OF TRANSPORTATION RECORD OF SURVEY, VOL. 159 OF SURVEYS, PAGE 100, APRIL 15, 2003, RECORDING NO. 20030415900008.
 - (R2) WASHINGTON STATE DEPARTMENT OF TRANSPORTATION RIGHT-OF-WAY PLANS AS FOLLOWS:
 - SR 509, SR 516 TO DES MOINES WAY SOUTH, APPROVED DECEMBER 1, 1969

- TITLE REPORT NO. SG-2631-12028**
- PARCEL A: SEE TITLE NOTE #54, #57, #60, AND #61
 - PARCEL B: SEE TITLE NOTE #54, #59, #62 AND #64
 - PARCEL C: SEE TITLE NOTE #54, #59, #62 AND #63
 - PARCEL D: SEE TITLE NOTE #54, #59, #62 AND #63
 - PARCEL E: SEE TITLE NOTE #54, #59, #62 AND #63
 - PARCEL F: SEE TITLE NOTE #54, #59, #62 AND #63
 - PARCEL G: SEE TITLE NOTE #54, #59, #62 AND #63
 - PARCEL H: SEE TITLE NOTE #54, #59, #62 AND #63
 - PARCEL I: SEE TITLE NOTE #54, #59, #62 AND #63
 - PARCEL J: SEE TITLE NOTE #54, #59, #62 AND #63
 - PARCEL K: SEE TITLE NOTE #54, #59, #62 AND #63
 - PARCEL L: SEE TITLE NOTE #54, #59, #62 AND #63
 - PARCEL M: SEE TITLE NOTE #54, #59, #62 AND #63
 - PARCEL N: SEE TITLE NOTE #54, #59, #62 AND #63
 - PARCEL O: SEE TITLE NOTE #54, #59, #62 AND #63
 - PARCEL P: SEE TITLE NOTE #54, #59, #62 AND #63

- TITLE REPORT NO. SG-2631-12032**
- PARCEL B: SEE TITLE NOTE #103 AND #104
 - PARCEL C: SEE TITLE NOTE #103 AND #104
 - PARCEL D: SEE TITLE NOTE #103 AND #104
 - PARCEL E: SEE TITLE NOTE #103 AND #104
 - PARCEL F: SEE TITLE NOTE #103 AND #104
 - PARCEL G: SEE TITLE NOTE #103 AND #104
 - PARCEL H: SEE TITLE NOTE #103 AND #104
 - PARCEL I: SEE TITLE NOTE #103 AND #104
 - PARCEL J: SEE TITLE NOTE #103 AND #104
 - PARCEL K: SEE TITLE NOTE #103 AND #104
 - PARCEL L: SEE TITLE NOTE #103 AND #104
 - PARCEL M: SEE TITLE NOTE #103 AND #104
 - PARCEL N: SEE TITLE NOTE #103 AND #104
 - PARCEL O: SEE TITLE NOTE #103 AND #104
 - PARCEL P: SEE TITLE NOTE #103 AND #104

- TITLE REPORT NO. SG-2631-12033**
- PARCEL A: SEE TITLE NOTE #103 AND #104
 - PARCEL B: SEE TITLE NOTE #103 AND #104
 - PARCEL C: SEE TITLE NOTE #103 AND #104
 - PARCEL D: SEE TITLE NOTE #103 AND #104
 - PARCEL E: SEE TITLE NOTE #103 AND #104
 - PARCEL F: SEE TITLE NOTE #103 AND #104
 - PARCEL G: SEE TITLE NOTE #103 AND #104
 - PARCEL H: SEE TITLE NOTE #103 AND #104
 - PARCEL I: SEE TITLE NOTE #103 AND #104
 - PARCEL J: SEE TITLE NOTE #103 AND #104
 - PARCEL K: SEE TITLE NOTE #103 AND #104
 - PARCEL L: SEE TITLE NOTE #103 AND #104
 - PARCEL M: SEE TITLE NOTE #103 AND #104
 - PARCEL N: SEE TITLE NOTE #103 AND #104
 - PARCEL O: SEE TITLE NOTE #103 AND #104
 - PARCEL P: SEE TITLE NOTE #103 AND #104

- TITLE REPORT NO. SG-2631-12034**
- PARCEL A: SEE TITLE NOTE #103 AND #104
 - PARCEL B: SEE TITLE NOTE #103 AND #104
 - PARCEL C: SEE TITLE NOTE #103 AND #104
 - PARCEL D: SEE TITLE NOTE #103 AND #104
 - PARCEL E: SEE TITLE NOTE #103 AND #104
 - PARCEL F: SEE TITLE NOTE #103 AND #104
 - PARCEL G: SEE TITLE NOTE #103 AND #104
 - PARCEL H: SEE TITLE NOTE #103 AND #104
 - PARCEL I: SEE TITLE NOTE #103 AND #104
 - PARCEL J: SEE TITLE NOTE #103 AND #104
 - PARCEL K: SEE TITLE NOTE #103 AND #104
 - PARCEL L: SEE TITLE NOTE #103 AND #104
 - PARCEL M: SEE TITLE NOTE #103 AND #104
 - PARCEL N: SEE TITLE NOTE #103 AND #104
 - PARCEL O: SEE TITLE NOTE #103 AND #104
 - PARCEL P: SEE TITLE NOTE #103 AND #104

- TITLE REPORT NO. SG-2631-12035**
- PARCEL A: SEE TITLE NOTE #103 AND #104
 - PARCEL B: SEE TITLE NOTE #103 AND #104
 - PARCEL C: SEE TITLE NOTE #103 AND #104
 - PARCEL D: SEE TITLE NOTE #103 AND #104
 - PARCEL E: SEE TITLE NOTE #103 AND #104
 - PARCEL F: SEE TITLE NOTE #103 AND #104
 - PARCEL G: SEE TITLE NOTE #103 AND #104
 - PARCEL H: SEE TITLE NOTE #103 AND #104
 - PARCEL I: SEE TITLE NOTE #103 AND #104
 - PARCEL J: SEE TITLE NOTE #103 AND #104
 - PARCEL K: SEE TITLE NOTE #103 AND #104
 - PARCEL L: SEE TITLE NOTE #103 AND #104
 - PARCEL M: SEE TITLE NOTE #103 AND #104
 - PARCEL N: SEE TITLE NOTE #103 AND #104
 - PARCEL O: SEE TITLE NOTE #103 AND #104
 - PARCEL P: SEE TITLE NOTE #103 AND #104



DAVID EVANS AND ASSOCIATES, INC.
 415 - 118th Avenue SE
 Bellevue Washington 98005-3518
 Phone: 425.519.0500

SHEET	2 OF 2
SCALE	1" = 100'
SUBMITTED	BISC
DATE	FEBRUARY 05, 2007
DRAWN	PCT MAHR
CHECKED	RAD
FILE	PTSE0000-0052