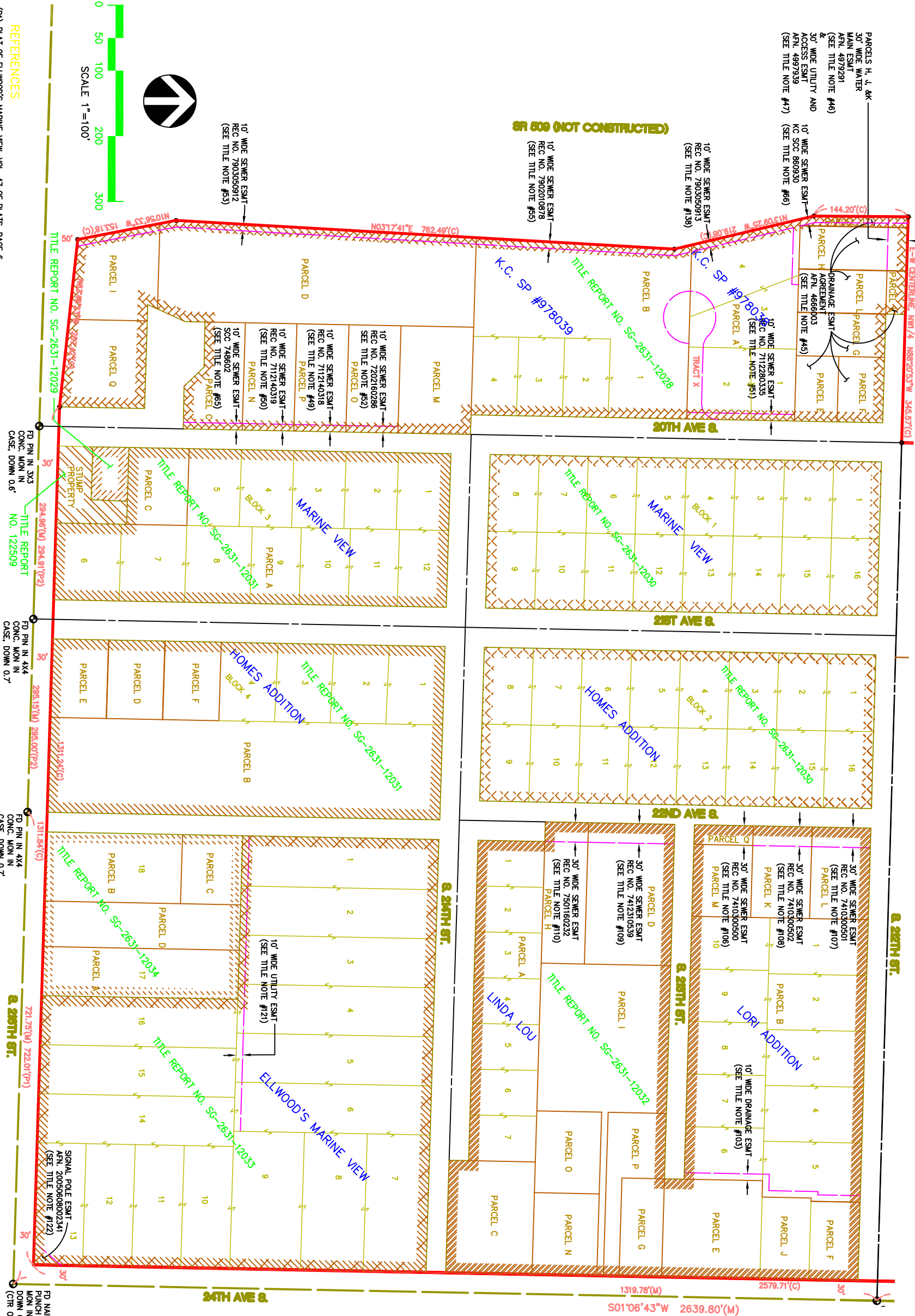


**PORT OF SEATTLE, PLAT VACATION NO. 1**  
 PORTION OF THE N.W. 1/4, SEC. 9 AND S.W. 1/4, SEC. 4, TWP. 22 N., RNG. 04 E., W.M.  
 CITY OF DES MOINES, KING COUNTY, WASHINGTON



**REFERENCES**

(P1) PLAT OF ELLWOOD'S MARINE VIEW, VOL. 47 OF PLATS, PAGE 6, DECEMBER 28, 1949, AUDITOR'S FILE NO. 3971473.

(P2) PLAT OF MARINE VIEW HOMES ADDITION, VOL. 56 OF PLATS, PAGE(S) 90-91, JANUARY 5, 1956, AUDITOR'S FILE NO. 4651624.

(R1) WASHINGTON STATE DEPARTMENT OF TRANSPORTATION RECORD OF SURVEY, VOL. 159, SURVEYS, PAGE 100, APRIL 15, 2003, RECORDING NO. 20030419500008.

(R2) WASHINGTON STATE DEPARTMENT OF TRANSPORTATION RIGHT-OF-WAY PLANS AS FOLLOWS:  
 - SR 509, SR 516 TO DES MOINES WAY SOUTH, APPROVED DECEMBER 1, 1989

**TITLE REPORT NO. SG-2631-12028**

PARCEL A: SEE TITLE NOTE #54, #57, #60, AND #61  
 PARCEL B: SEE TITLE NOTE #54, #59, #62 AND #64  
 PARCEL C: SEE TITLE NOTE #63  
 PARCEL D: SEE TITLE NOTE #63  
 PARCEL E: SEE TITLE NOTE #60, AND #63  
 PARCEL F: SEE TITLE NOTE #63  
 PARCEL G: SEE TITLE NOTE #63  
 PARCEL H: SEE TITLE NOTE #63  
 PARCEL I: SEE TITLE NOTE #63  
 PARCEL J: SEE TITLE NOTE #63  
 PARCEL K: SEE TITLE NOTE #63  
 PARCEL L: SEE TITLE NOTE #63  
 PARCEL M: SEE TITLE NOTE #63  
 PARCEL N: SEE TITLE NOTE #63  
 PARCEL O: SEE TITLE NOTE #63  
 PARCEL P: SEE TITLE NOTE #63  
 PARCEL Q: SEE TITLE NOTE #63  
 PARCEL R: SEE TITLE NOTE #63  
 PARCEL S: SEE TITLE NOTE #63

**TITLE REPORT NO. SG-2631-12029**

PARCEL A: SEE TITLE NOTE #54, #57, #60, AND #61  
 PARCEL B: SEE TITLE NOTE #112  
 PARCEL C: SEE TITLE NOTE #103 AND #104  
 PARCEL D: SEE TITLE NOTE #103 AND #104  
 PARCEL E: SEE TITLE NOTE #103 AND #104  
 PARCEL F: SEE TITLE NOTE #103 AND #104  
 PARCEL G: SEE TITLE NOTE #103 AND #104  
 PARCEL H: SEE TITLE NOTE #103 AND #104  
 PARCEL I: SEE TITLE NOTE #103 AND #104  
 PARCEL J: SEE TITLE NOTE #103 AND #104  
 PARCEL K: SEE TITLE NOTE #103 AND #104  
 PARCEL L: SEE TITLE NOTE #103 AND #104  
 PARCEL M: SEE TITLE NOTE #103 AND #104  
 PARCEL N: SEE TITLE NOTE #103 AND #104  
 PARCEL O: SEE TITLE NOTE #103 AND #104  
 PARCEL P: SEE TITLE NOTE #103 AND #104  
 PARCEL Q: SEE TITLE NOTE #103 AND #104  
 PARCEL R: SEE TITLE NOTE #103 AND #104  
 PARCEL S: SEE TITLE NOTE #103 AND #104

**TITLE REPORT NO. SG-2631-12032**

PARCEL A: SEE TITLE NOTE #103 AND #104  
 PARCEL B: SEE TITLE NOTE #103 AND #104  
 PARCEL C: SEE TITLE NOTE #103 AND #104  
 PARCEL D: SEE TITLE NOTE #103 AND #104  
 PARCEL E: SEE TITLE NOTE #103 AND #104  
 PARCEL F: SEE TITLE NOTE #103 AND #104  
 PARCEL G: SEE TITLE NOTE #103 AND #104  
 PARCEL H: SEE TITLE NOTE #103 AND #104  
 PARCEL I: SEE TITLE NOTE #103 AND #104  
 PARCEL J: SEE TITLE NOTE #103 AND #104  
 PARCEL K: SEE TITLE NOTE #103 AND #104  
 PARCEL L: SEE TITLE NOTE #103 AND #104  
 PARCEL M: SEE TITLE NOTE #103 AND #104  
 PARCEL N: SEE TITLE NOTE #103 AND #104  
 PARCEL O: SEE TITLE NOTE #103 AND #104  
 PARCEL P: SEE TITLE NOTE #103 AND #104  
 PARCEL Q: SEE TITLE NOTE #103 AND #104  
 PARCEL R: SEE TITLE NOTE #103 AND #104  
 PARCEL S: SEE TITLE NOTE #103 AND #104



City of  
**Des Moines**



**DAVID EVANS  
AND ASSOCIATES, INC.**

415 - 118th Avenue SE  
Bellevue Washington 98005-3518  
Phone: 425.519.6500

<b>SHEET</b>	8 OF 8	<b>SCALE</b>	1" = 100'
<b>SURVEYED</b>	BLSC	<b>DATE</b>	FEBRUARY 05, 2007
<b>DRAWN</b>	PCT, MAGR	<b>CHECKED</b>	RAD
<b>FILE</b>	PTSE0000-0052		