

Solid waste system training

Trash – recycle – compost – other solid wastes

30 January 2019

Tom Beirne

Solid Waste Program Manager, Aviation Utility

beirne.t@portseattle.org



We owe ourselves better



Contents

- Program Updates 2 min
- Waste Overview 10 min
- Materials NOT accepted 2 min
- How Does it Impact Me? 2 min
- How to Operate 7 min

Notes in .pptx provided for detailed instruction

Program Updates

2018

- Asset management
 - Preventative Maintenance
 - Deep clean, repairs
- South Airfield Compactor consolidation
 - A10 to E43
 - B8 to E43, TBD
- ANSI/OSHA audits
 - Safety retrofits
- Access control and fullness monitoring
- Signage – how to operate, trouble calls, rules, stream identification, etc
- Citations

2019

- Used Cooking Oil tanks (7 of 10)
 - (SSAT, ST, CT-N, CT-S, A Conc, NSTAR & D11)
- NSAT Load Dock (NSTAR project)
 - Cart wash station
 - Delivery striping
- CT-N / CT-S delam floors
- SSAT warm handwashing stations
- Biffy dump improvements and handwash
- CT-N&S waste capacity project
- Standardize compactor controls
- Interoperability retrofits (increase compactor availability)
 - (A Conc, CT-N, CT-S, D11)
- Solid Waste Cameras
- Cart wash project: pending funding
 - (A Conc, CT-N, CT-S, D11, SSAT, ST)
- Rules & Regulations language revisions



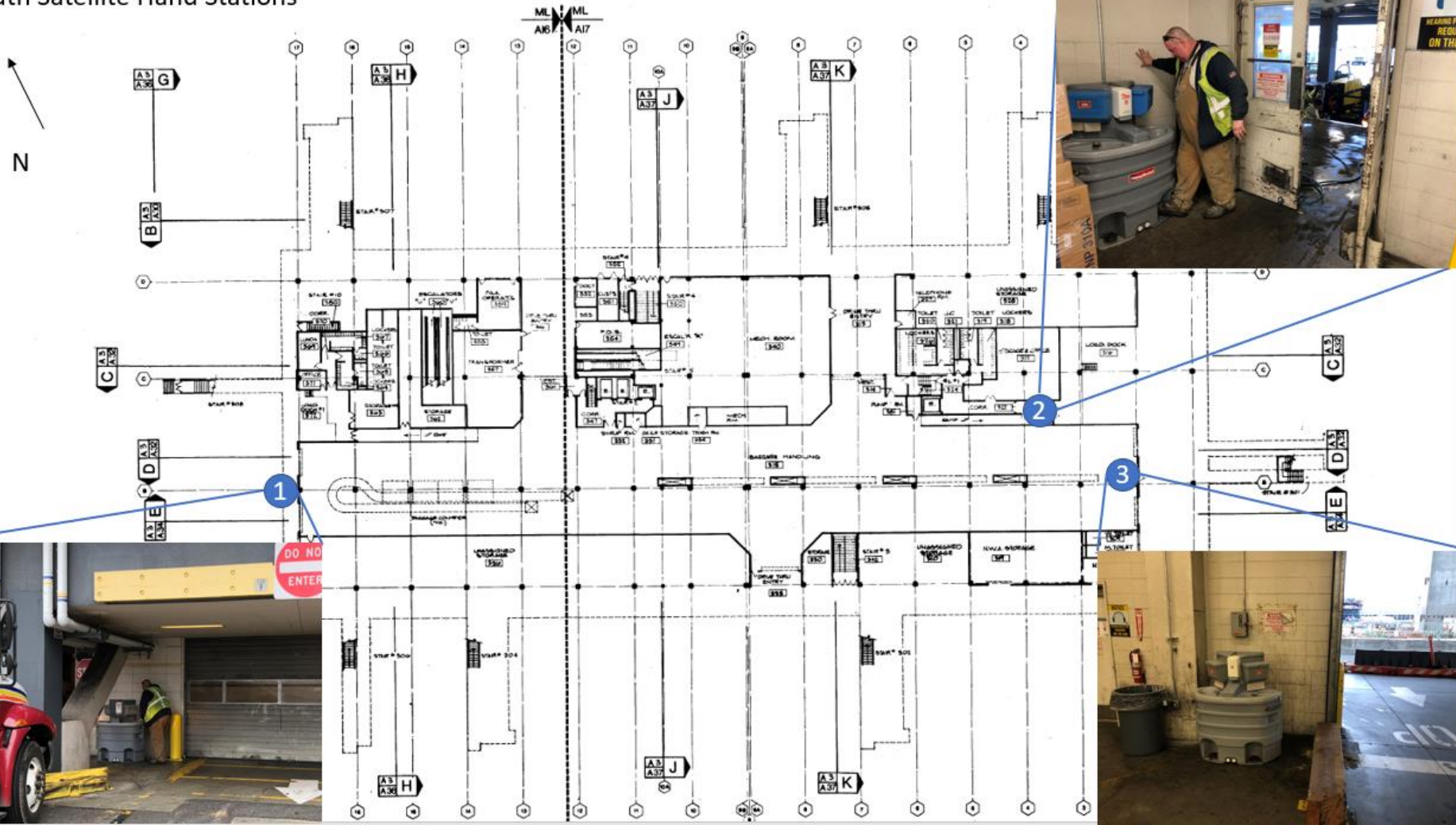
Safety. Capacity. Sanitation.

A-10 to Gate E43



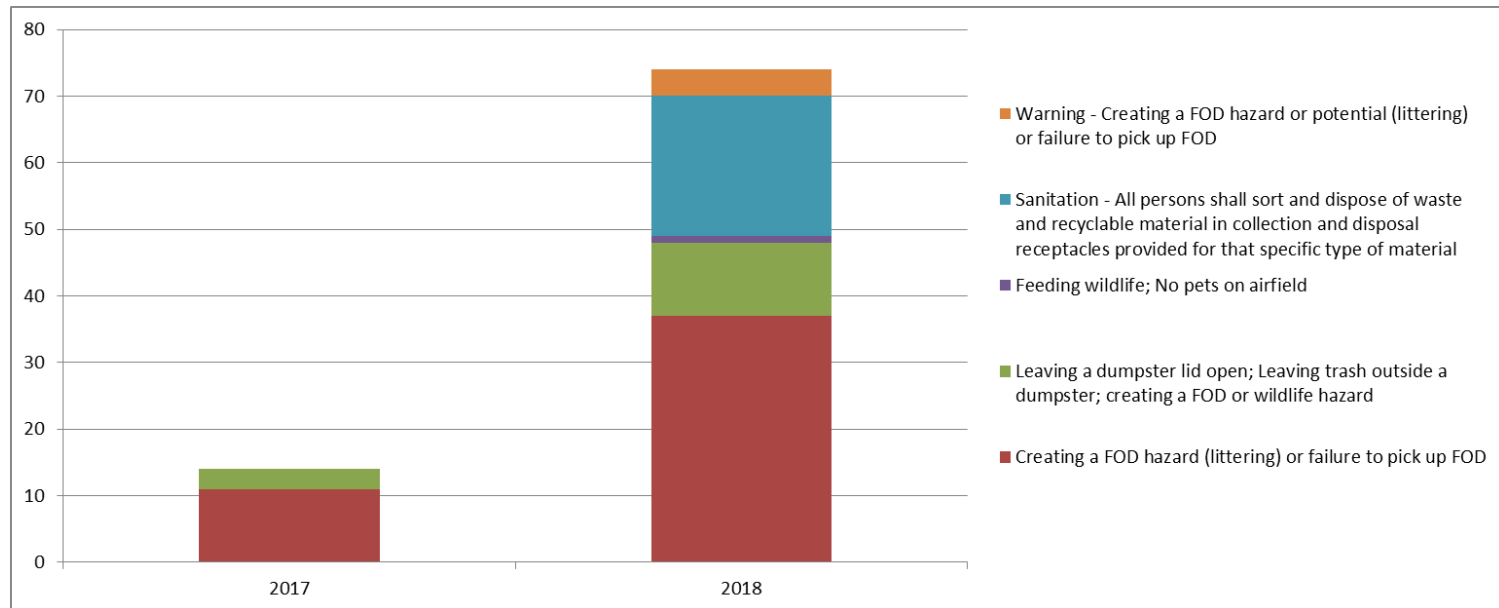
Functional, Available.

South Satellite Hand Stations



Citation Stats

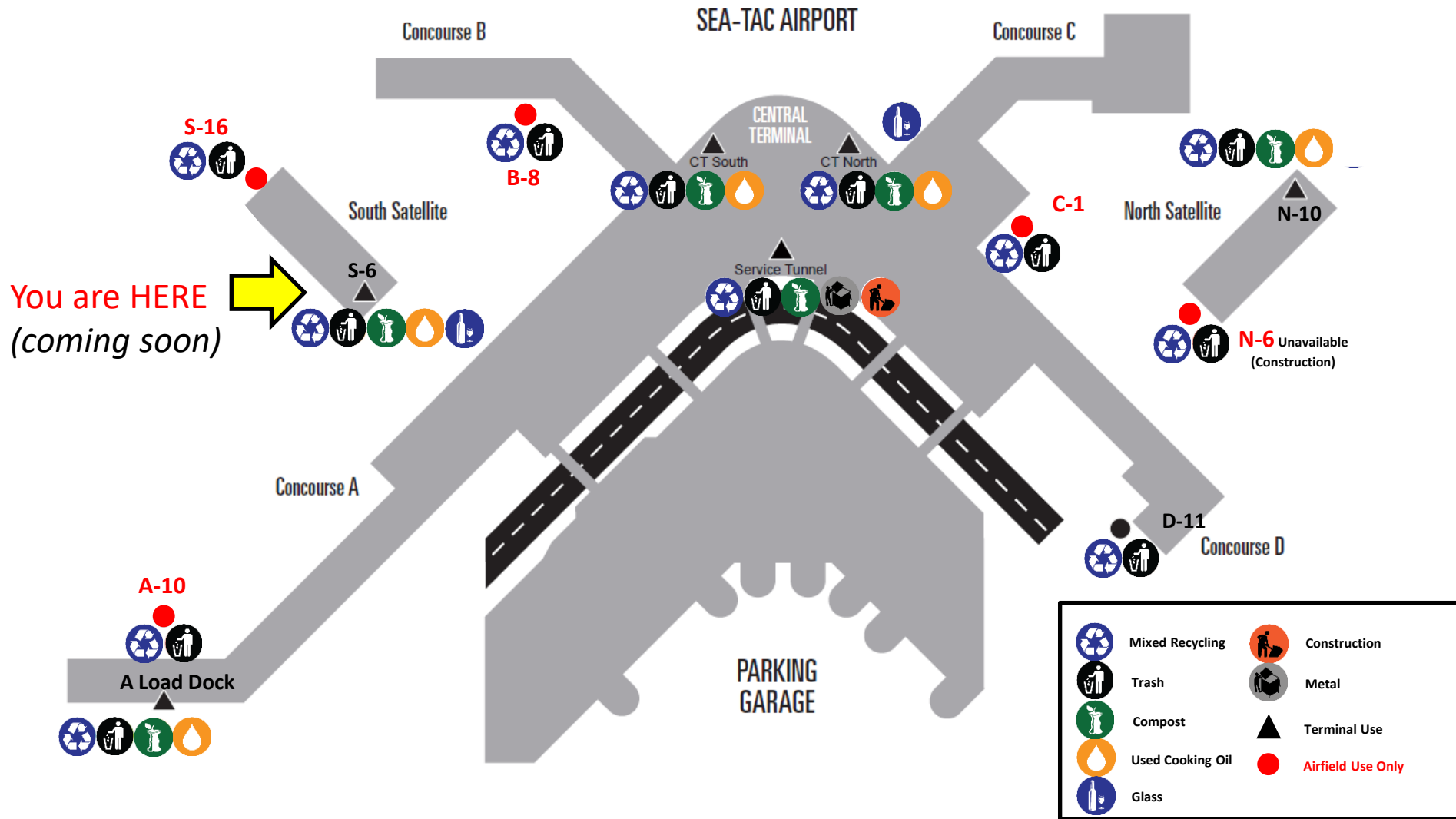
429% increase 2017 to 2018



- Summer 2017 vs 2018 (June – August)
- Citations for Sanitation/FOD/Litter; Contamination; Creating wildlife hazard

***New Sanitation category created in 2018**

Accepted Materials



Other Materials

APHIS-USDA Regulated waste per 7CFR§330.400 & 9CFR§94.5

International deplaned waste = tenant responsibility

MUST be brought

“...to an approved facility for incineration, sterilization, or grinding
into an approved sewage system.”

Jeffrey Norton
Waste Management

NW regional Manager
360-913-4877
jnorton1@wm.com

Compactors & Dumpsters



Trash
Black



Recycling
Clear



Construction

- Construction Users Only
- Requested through project manager



Compost
Green



- Approved by Cedar Grove:
www.cedar-grove.com/compostable/accepted-items/bags



Metal

- At Service Tunnel
Snowshed, Air Cargo
1 and 4



Glass Dumpster

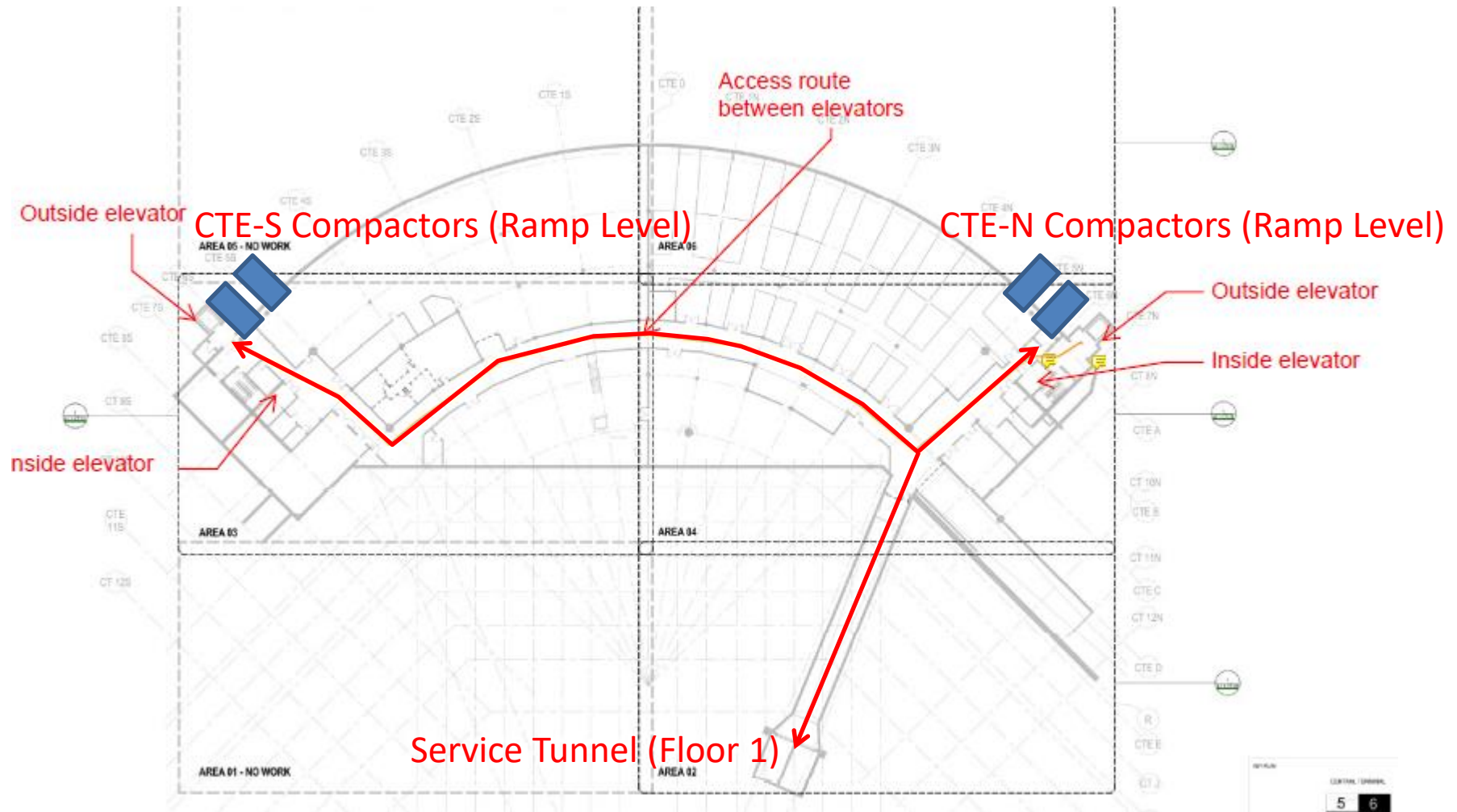
- If no dumpster, use Recycling compactor
- Do not throw (safety/FOD)

*City of SeaTac jurisdiction:
Must use Recology for Trash and
Recycling for hauling*

Maintenance issue or Full: **ACC at 787-5229**

For bulky objects or items not categorized above, contact AV Environmental at 787-4633

Basement Level Routes



*You need access
Service tunnel door:*

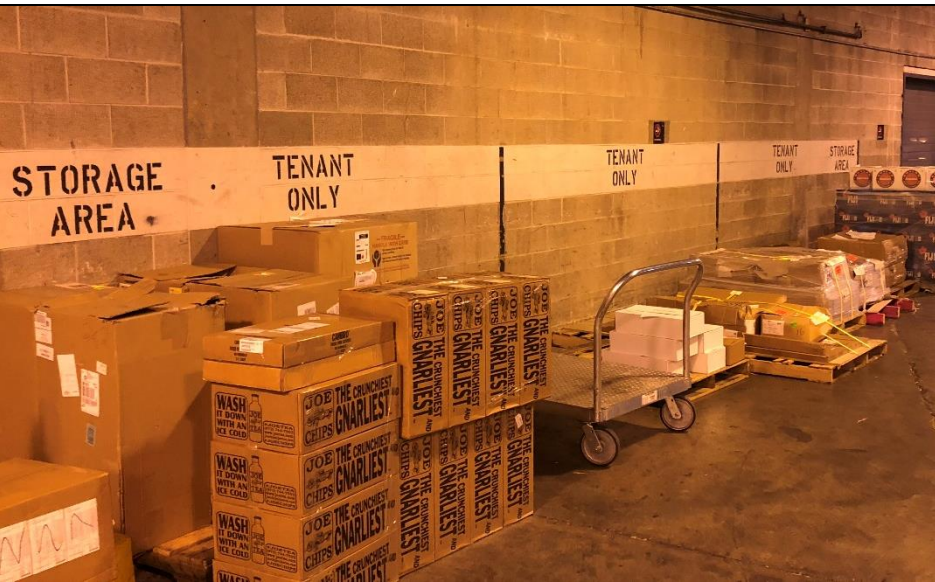


Basement Level Routes



Deliveries


- Shipping material responsibility
- Pallets: leave one, take one
- Storage at dedicated locations
 - ADR Cages
 - Service Tunnel
 - Direct tenant leased space



Trash and Recycling




 No Appliances

 No Recyclables

 No Furniture

 No Pallets or Kegs


 No Batteries

 No Electronics

Do you know
what to do with
this?


 **ALUMINUM /TIN CANS**
(bagged)

 **CARDBOARD**
Break down boxes

 **PLASTIC** Bottles, containers (bagged)
bubble wrap, stretch film

PLASTIC FILM:
No longer accepted

 **PAPER** Magazines, newspaper
office paper, shredded paper (bagged)

 **GLASS** Unless there is a separate
bin for glass you may recycle it here

Not accepted at Airport

Tenant Responsibility

Electronic Scrap

Small appliances, microwaves, TV's, computers

King County Take-it-back network

<https://kingcounty.gov/depts/dnrp/solid-waste/programs/take-it-back/electronics.aspx>

<https://www.totalreclaim.com>

Universal Waste

Batteries, lightbulbs, equipment with mercury

<https://www.ecolights.com>

<https://www.totalreclaim.com>

HAZMAT

Paints, broken light bulbs, cleaners, solvents

<https://kingcounty.gov/depts/dnrp/solid-waste/facilities/hazardous-waste.aspx>


CFC Containing Appliances

Refrigerators, water coolers

<https://www.totalreclaim.com>

Large objects? Questions?
Aviation Environmental 206-787-4633

What do I do with....

 **King County**

Search Kingcounty.gov


[Home](#) [How do I...](#) [Services](#) [About King County](#) [Departments](#)

Solid Waste Division

What do I do with...?

Search

Materials list



[Home](#) [Services](#) [Recycling & garbage](#) [Solid Waste Division](#) [What do I do with...?](#) [Materials list](#)

Materials list

Select one or more materials to find a list of businesses and organizations that will accept your unwanted materials for reuse, recycling, or disposal.

Animal Waste >

Appliances >

View selected materials

☒ **REFRIGERATORS, FREEZERS**
Appliances used for cooling or freezing foods.

☐ **AIR CONDITIONERS, HEAT PUMPS**
An air conditioner is a mechanical refrigeration device used to control temperature, humidity, cleanliness, and movement of air in a confined space. A heat pump is an outdoor air conditioning unit capable of either cooling or heating an indoor space.

☒ **OTHER MAJOR APPLIANCES**
Refrigerators, freezers, stoves (kitchen range or oven), hot water heaters, furnaces, washers, dryers and other major appliances sometimes referred to as "white goods."

☐ **SMALL HOUSEHOLD APPLIANCES**
Small household appliances include items such as blenders, coffee pots and irons.

☒ **MICROWAVES**
Microwave ovens are kitchen appliances used to heat food and drinks.

Asbestos >

Batteries >

Carpet >

Disposal Room Rules

How does it impact me?

1. Compactor Doors – CLOSED
2. Sort and Dispose into CORRECT containers
3. Dumpster Lids – CLOSED
4. All compactor users: TRAINED on operation
5. No compactor users under 18 years
6. Clean up all – SPILLS and LITTER
7. Dumping PROHIBITED
 - a) on ground
 - b) outside designated containers



“Stash your trash”

Compactor Operation (1 of 4)

(Trash, Recycling)

- DO NOT allow piggy-backing
 - CLOSE door after each use
 - Your key is for your company only
- For maintenance or fullness
 - DO NOT attempt to fix
 - CALL ACC
- DO NOT climb inside

Maintenance issue or Full: **ACC at 787-5229**

Compactor Operation (2 of 4)

(Trash, Recycling)

Video Placeholder 1

Video Placeholder 2



Compactor Operation (3 of 4)

(Trash, Recycling)

Load Docks

1

Touch Key



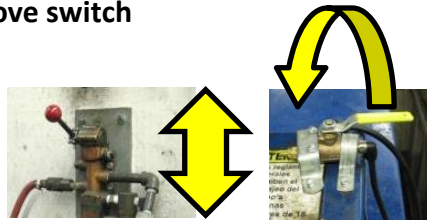
2

Close Gate



3

Move switch



Type 1: up/down

Type 2: rotate

All other

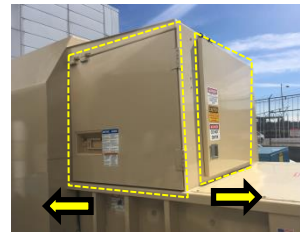
1

Touch Key



2

*Open/Close



*Ensure slide latch is CLOSED

TROUBLESHOOTING

Check emergency stop is out



STOP!



PRESS

Maintenance issue or Full: **ACC at 787-5229**

Compactor Operation (4 of 4)

Issues

Bridging

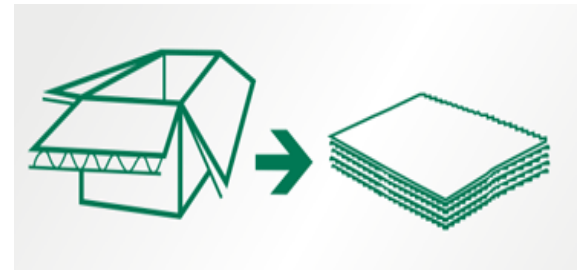
Cardboard raises above the ram.
Appears full.



Overfilling Hopper

Hopper too full.
Material doesn't compact.

Solutions



Max 5 bags

BREAK DOWN boxes
Run compactor 2x

Maintenance issue or Full: **ACC at 787-5229**

Key Requests

Applies to compactors only (trash, recycling)



- Turnaround
 - Existing accounts: 2-4 days
 - New accounts: 1-2 weeks
 - Large key orders: 2-4 weeks
- Key Request Form:
<https://www.portseattle.org/Business/Airport-Tenants/Pages/Compactor-Access.aspx>
 - Requires Port account number, contact ADR Business Manager, Properties or PM if unknown
- Billing
 - Keys cost \$20 each
 - Cost per key use: \$9.40
 - Recycling compactor access: FREE
 - Billing based on lease or service agreement terms.

Keys must be set up with an account for each tenant or contractor

Compost



**Food +
Compostables**



Green Bags ONLY

Food scraps, paper towels, green-waste,
compostable packaging, and other
compostable materials



**NO BLACK BAGS, GARBAGE,
OR RECYCLING**

CLOSE DUMPSTER AFTER EVERY USE

IF DUMPSTER IS FULL CALL 206 787-5229 (ext.1)

Bags must be approved by Cedar Grove:
www.cedar-grove.com/compostable/accepted-items/bags



SEATTLE-TACOMA INTERNATIONAL AIRPORT

Port
of Seattle

AVIATION OPERATIONS BULLETIN

SAFETY ALERT

AV-OPS - Safety
09-13-2018
Issued By: [E. Belleque](#)

Compost Dumpster Procedures

Effective: Immediately

In compliance with the Food & Drug Administration and the WA State Department of Health & Human Services to prevent Foreign Object Debris & Pest hazards, all stakeholders must follow these mandatory procedures when using Compost Dumpsters:

The Compost Dumpster lids SHALL be closed after use. If dumpster lids CAN NOT close completely trash needs to be taken to another dumpster. Employees/Companies NOT following these procedures will be issued a citation.



FOR IMMEDIATE NOTIFICATION, DISTRIBUTION & COMMUNICATION
Please forward to all pertinent parties and staff

Cooking Oil *Caddy*

Waste Cooking Oil Transfer

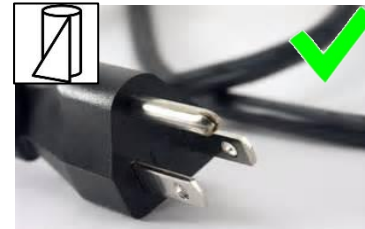
- Caddy System Required (tenant purchase)
- Variable sizes for different fryer design
- **Oil solids go to trash**



Tenant responsibility

- **Purchase and Maintenance** of oil caddy
- Ensure no oil on electric plug
- Wipe off oil before leaving leased space
- Wipe off oil tank quick disconnect after complete
- Clean up or report any spills

Keep Oil Caddy-Plugs CLEAN



Best practice: oil rags on hand

Cooking Oil

Safety



How will you protect yourself?

Cooking Oil

Safety

SAFETY FIRST: PLEASE READ CAREFULLY



CAUTION

Equipment and Fittings will get HOT. Always wear Personal Protective Equipment (PPE) when operating equipment.



CAUTION

No Water!! Operating with water will damage the pump.



CAUTION

Once grease is emptied, run pump for 30 seconds to help prevent grease blockage.



CAUTION

Always drain oil into the strainer basket to prevent pump damage. Clean the basket out regularly.



CAUTION

Cold or room temperature grease will damage pump. Run warm or hot oil only.



CAUTION

Never leave oil in the caddy as the pump and hose could become blocked.



DANGER

Please read this operation and servicing manual thoroughly before installing, servicing or using this equipment. Failure to properly install, service or use this equipment, or alteration of this equipment, can cause serious property damage, injury or death.



DANGER

This waste oil pump station unit is intended for use with hot oil and grease at temperatures between 100°F (38°C) and 375°F (190°C). Always wear protective, heat-resistant gloves, heat-resistant apron and goggles when using this equipment. Failure to properly use this equipment can lead to serious injury or death.



DANGER

The caddy lid is designed to prevent hot oil and grease spills when transporting the caddy. Failure to use the lid or properly secure the lid may result in hot oil and grease spills, which can lead to serious injury or death.

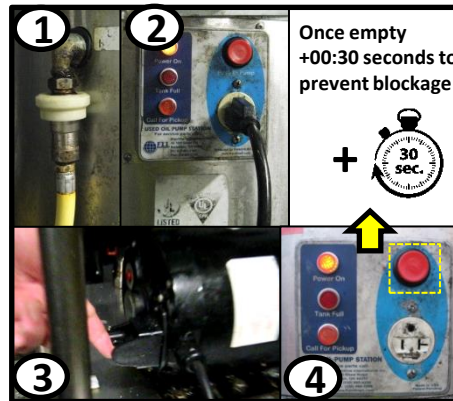
FRONTLINE
international

For further assistance
please call +1 330-861-1100

SCAN FOR
INSTALLATION
MANUAL AND
OPERATING
PROCEDURES

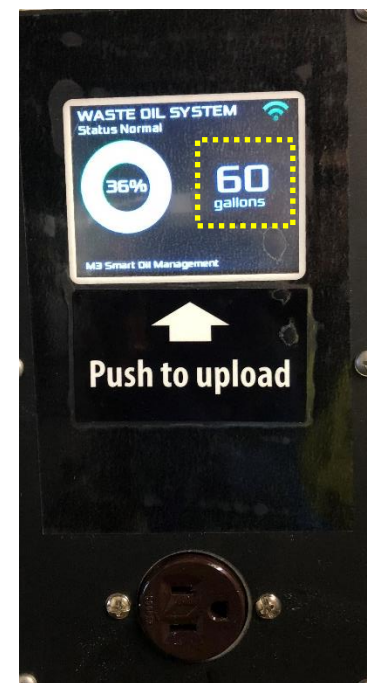


Cooking Oil Operation



- ① Attach hose
- ② Attach electric plug
- ③ Turn on pump
- ④ Hold button

New tanks



Maintenance issue or Full: **ACC at 787-5229**

Operation (5 minute mark): https://www.youtube.com/watch?v=fzhrm5U_d_4&t=322s

Cooking Oil

Operation

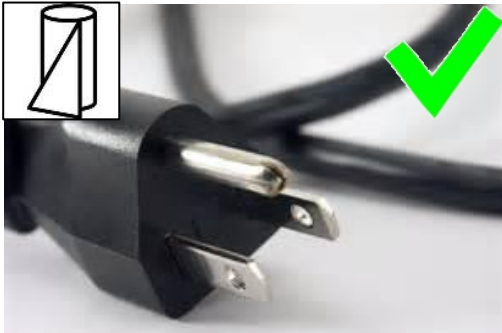
Troubleshooting

See the following table to troubleshoot problems

PROBLEM	PROBABLE CAUSE	CORRECTIVE ACTION
Caddy motor will not run.	The caddy motor is not turned ON.	Turn the motor ON with the switch located on the back of the motor.
	Caddy motor reset switch has tripped.	Press the motor reset switch on the back of the caddy motor.
	The caddy power cord is not making proper connection.	Ensure the caddy power cord is completely plugged into the motor and the control panel receptacle .
	The tank or control panel at the fill station has lost power.	Ensure the tank or fill station control panel are plugged in.
		Ensure the outlet that the tank or fill station control panel is plugged into has not lost power.
		If there is no power to the outlet make sure the circuit breaker has not tripped or that the outlet is not on a switch that has been turned off.
Caddy motor runs but no oil will pump.	Disconnect fittings are not properly connected.	Make sure the female disconnect fitting is properly connected to the male fitting.
	Caddy hose may be plugged with grease.	Run the caddy hose under hot water to liquefy any grease that may be clogging the hose.
	Caddy pump may be plugged with grease.	Remove the four screws on the front of the pump and clean the inlet and outlet port of the pump, and the rotor gear.
		Make sure that nothing is blocking the inlet tube that goes down into the oil.
		Assure that the oil being discarded is in liquid state.
	Call 330-861-1100 if you have checked all of the above and the problem still has not been resolved.	

Cooking Oil *Operation*

Keep Plugs
CLEAN



Dirty Plugs

SAFETY: Shorts, Fires



**Improvised
Storage**



PROHIBITED



Maintenance issue or Full: **ACC at 787-5229**

Video: https://www.youtube.com/watch?v=fzhrm5U_d_4&t=322s

References

Item	Tenant Resource
Compost bags	www.cedar-grove.com/compostable/accepted-items/bags
Oil Operation (5 min mark)	www.youtube.com/watch?v=fzhrm5U_d_4&t=322s
Oil Caddy Manual	www.frontlineii.com/assets/dealer/Resource-Center/Installation-Manuals/Waste-Oil-Caddy/FRONT-229-Waste-Oil-Caddy-Instruction-Manual-ENG.pdf
Oil Caddy Parts	Frontline International @ 877-776-1100 or support@frontlineii.com
Solid Waste Utility Account (compactor keys)	www.portseattle.org/Business/Airport-Tenants/Pages/Compactor-Access.aspx
Not accepted at airport	Tenant Resource
Refrigerators, coolers	www.totalreclaim.com
Batteries, Lightbulbs, Mercury	www.ecolights.com www.totalreclaim.com
Paint, Cleaners, Solvents, Broken bulbs	https://kingcounty.gov/depts/dnrp/solid-waste/facilities/hazardous-waste.aspx
Small appliances, microwaves, TVs, Computers	https://kingcounty.gov/depts/dnrp/solid-waste/programs/take-it-back/electronics.aspx www.totalreclaim.com
What do I do with?	https://info.kingcounty.gov/services/recycling-garbage/solid-waste/what-do-i-do-with/Materials?cat=1
International Waste	Waste Management: Jeffrey Norton 360-913-4877 jnorton1@wm.com

Questions?

Stick around for....

- Real time key access programming
- Program recommendations
- Additional training requests



Stash the Trash

UP NEXT:

Aviation Environmental

What happened?

What would you do?



What happened:

- A. Trash and plastic bags placed in dumpster (not allowed)
- B. Hauler refused pick up
- C. More compost added
- D. Overflow condition

What would you do?

1. .Call **ACC: 206-787-5229**, ext 1
2. "Hi I'm at [LOCATION]
and the compost dumpster is [FULL].
My name is [NAME]
and I'm with [COMPANY]."
 1. Put compost in **trash**, not on floor, not on pile.
 2. Notify Supervisor

What happened? What would you do?



What happened:

- A. Overfilled dumpster
- B. Didn't use alternate location
- C. Dumped on floor

What would you do?

1. Call ACC 206-787-5229, ext 1
2. Use alternate dumpster location

What happened? What would you do?



What happened:

Dumped oil solids in Compost

What would you do?

1. Bag oil solids
2. Put oil solids in TRASH

What happened? What would you do?



What happened:

1. Abandoned waste



What would you do?

1. Put waste in correct container
2. If unavailable, use alternate location
3. Call ACC 206-787-5229 ext 1

What happened?

What would you do?



What happened:

1. Contamination in METAL only dumpster
2. Hazmat (Paint)
3. Trash and plastics
4. Electronics

What would you do?

1. Only Metal in METAL dumpster
2. Put all other materials in correct containers
3. Materials not accepted:
 - Kingcounty.gov
 - Totalreclaim.org
 - Ecyclewashing.org