

South King County Fund Update

Highline Forum May 27, 2020

Andy Gregory

Sr. Manager, Environmental
Engagement



Background

- In November 2018, Port Commission allocated \$10 Million to be set aside for the near-airport communities for the five years between 2019-2023.
- For illustrative purposes, the fund uses were to include “support for addressing airport noise and for other projects that support increased environmental health and sustainability.”

Background

- In June of 2019, the Commission adopted eight guiding principles for the fund.
 - Fund projects in the South King County Area
 - Prioritize community input to inform Port decision making
 - Support Port equity policies and practices
 - Provide added benefit to current programs that address airport noise, environmental health and sustainability
 - Prioritize projects that are ready to proceed
 - Build on established programs and commitments to fulfill current obligations
 - Promote innovation
 - Encourage matching funds where possible

Outreach and Engagement

- Six City presentations in Summer 2019
- Presentations, feedback at Highline Forum and StART
- Hired multicultural engagement consultant to identify community leaders and grassroots organizations to provide input.
- Office of Equity, Diversity and Inclusion interviewed dozens of community leaders and organizations from under-represented communities.

COVID-19

- In March, as the engagement team was poised to conduct community meetings, the COVID-19 pandemic struck—preventing public gatherings.
- Drawing upon feedback received from multiple stakeholder groups and recognizing the imminent need for economic support, the Port Commission, on April 28, 2020 added “Economic Development” to the permissible uses for the South King County Fund, to support recovery for the region from the COVID-19 pandemic.
- A total of \$1.5 million will be available in 2020.

Funding Round 1, Summer 2020

- The Port will be announcing the first round of funding, for non-profits and community groups, opening June 15.
- The fund will support projects and programs in four focus areas:
 - Small business assistance
 - Workforce development
 - Job creation
 - Development of new, innovative economic recovery strategies

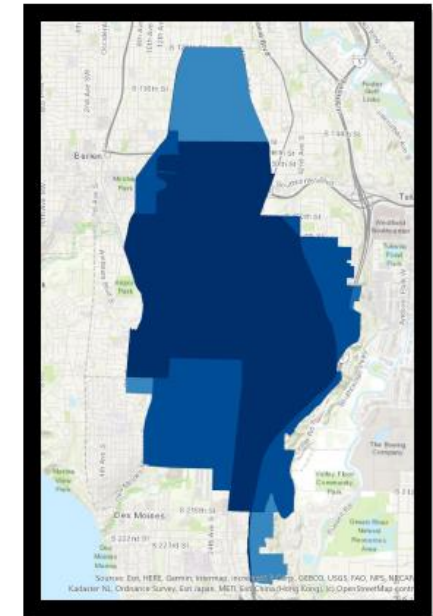
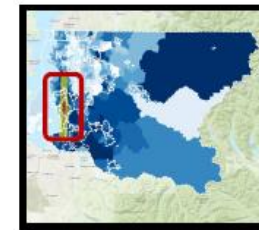
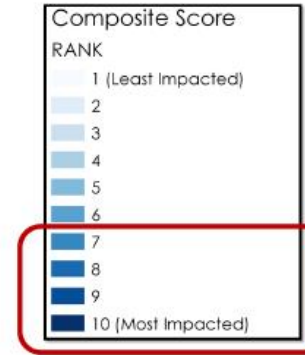
Eligibility

- Grants are capped at \$50,000 and projects must be completed within one year.
- Programs must have a tie to a Port-related line of business including:
 - Aviation
 - Maritime
 - Construction
 - Tourism
 - Green Jobs

Prioritizing Equity

- The Port has recently developed an Equity Index for King County. This overlays environmental data with socio-economic factors to identify communities that are most vulnerable.
- Data show that COVID-19 disproportionately impacts low income and communities of color, therefore the Port will prioritize projects and funding to support these communities.

SeaTac



SeaTac Index Scores

- Index Score: **9.5**
- Environmental Effects: **9.0**
- Environmental Exposure: **10.0**
- Sensitive Population: **9.0**
- Socioeconomic Factors: **9.0**

Demographics for SeaTac

Total Population **29,239**
Median Household Income: **\$58,995**
White Populations: **40.6%**
Foreign Born: **37.8%**

Multi-Tiered Approach

- In addition to the Economic Development tract, and keeping with the Commission's initial intent to support environmental health and sustainability projects through the Fund, the Port will announce a new Environmental Grants Program later this summer.

Environmental Grants Program

- Building off of the Port's highly successful ACE program, the SKCF Environmental Grants Program will:
 - Provide small matching grants up to \$20k
 - Fund public improvement projects in Burien, Des Moines, Federal Way, Normandy Park, SeaTac and Tukwila
 - Be available to non-profits and community groups
- Projects must:
 - Include a public improvement as defined in [RCW 35.21.278](#)
 - Demonstrate a 3:1 match in cash, in-kind, volunteer hours or several other options

Role of Highline Forum Members in the Fund

- You are all critical to the successful implementation of this fund.
- Cities are key partners in facilitating public improvement projects.
- We hope to work with educational institutions to build upon successful jobs training programs.
- You can all help guide potential applicants toward these resources, especially in times of budget cuts.

For 2021 and Beyond

- The Port will continue working directly with cities and with the community to refine and improve the program.
- We are working on developing a tract for cities to apply for funding, similar to the Port Economic Development Grants program, hopefully to be launched early in 2021.
- We will be following up directly with your staff to vet proposed public improvement projects in your jurisdictions.

Thank You!

Questions?

Call or email me anytime:

206.612.9406

Gregory.A@portseattle.org