



# SUSTAINABILITY



# Environmental Sustainability Sectors



## **Water and Energy:**

Water pollution control methods can be subdivided into physical, chemicals, and biological treatment systems



## **Pollution Control:**

process of reducing or eliminating the release of pollutants into the environment



## **Weather and climate:**

the impact of climate changes and environmental conditions



## **Solid Waste Management:**

collecting, treating, and composing and disposing solid material that discard because its served it purpose or it no longer needed

[Learn about Port employees in Sustainability!](#)

# Water and Energy SUBSECTORS



Contractor



Engineering



Maintenance



Sustainability



# Contractor



Cistern Installation  
Contractor

Irrigation System  
Specialist

Hydrogeologist



Sustainability

Port  
of Seattle®

# Cistern Installation Contractor



- Salary: \$40k-\$70k per year
- Digs trenches for installation of septic tank and drains lines for sewage disposal system
- Education: On the job training, cistern training certificate equipment operator license



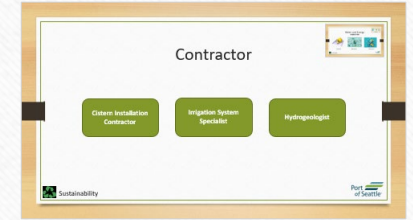
Sustainability

Port  
of Seattle®



# Irrigation System Specialist

- Performs installation, maintenance and repair of irrigation systems.
- Education: HS diploma (Required), associate's degree & higher
- Salary: \$40k-\$45k per year

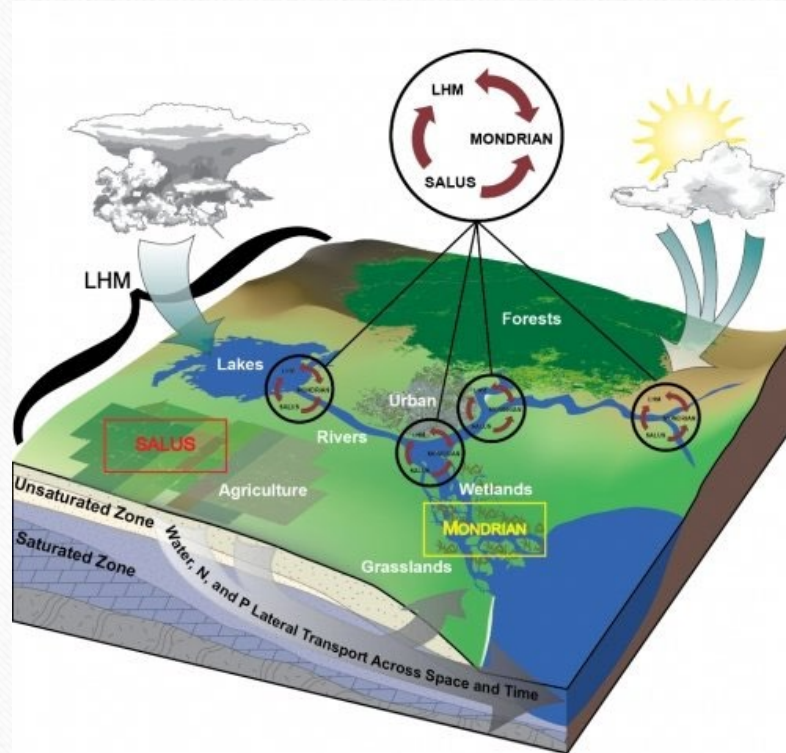


Sustainability

Port  
of Seattle®



# Hydrogeologist



- Study the location, movement, & quality of water formations that are below the surface of the Earth.
- Education: Bachelor's degree in Environmental science, geography, geology, earth sciences or related.
- Salary: \$74k-\$100k per year



Sustainability

Port  
of Seattle®

# Engineering

Energy Research  
Analyst

Shellfish Specialist

Water Quality  
Analyzes

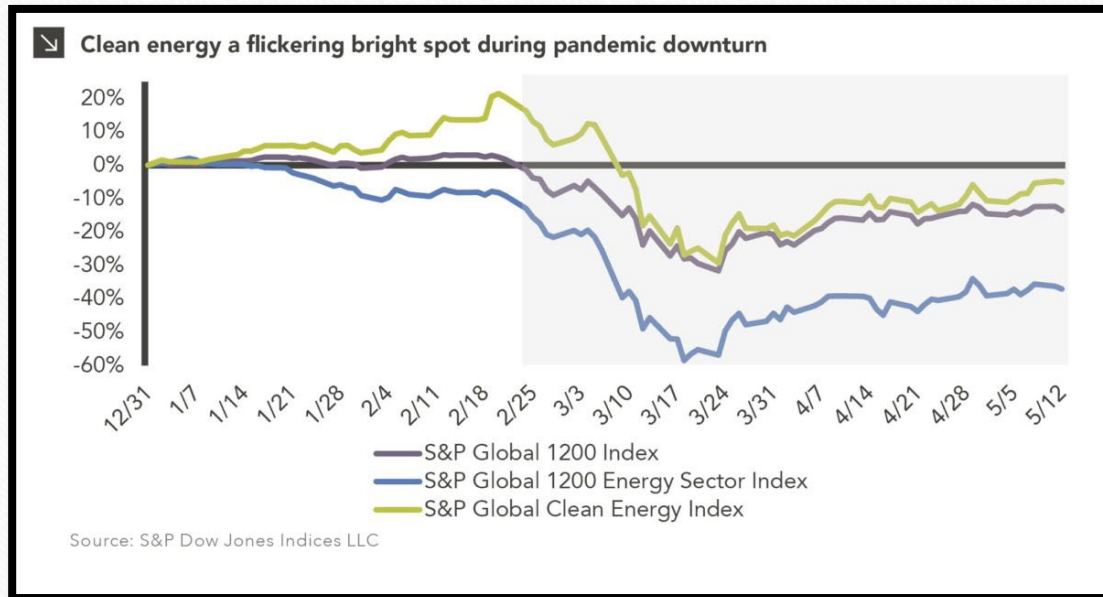


Sustainability

Port  
of Seattle®



# Energy Research Analyst



- Measure energy efficiency, analyze data on energy use, develop an energy model for buildings, etc.
- Education: HS diploma & Bachelor's degree
- Salary: \$57k-\$75k per year



Sustainability

Port  
of Seattle®



# Shellfish Specialist



- Responsible for providing excellent service and product for markets
- Education: Degree in marine, biology, fisheries or closely related field.
- Salary: \$29k-\$63k per year



Sustainability

Port  
of Seattle®



# Water Quality Analyst



- Safeguard the quality of water through scientific analysis, ensuring quality and safety standards are met.
- Education: Bachelor's degree in environmental science or a science-related field.
- Salary: \$40k-\$79k per year



Sustainability

Port  
of Seattle®



# Maintenance

Director of Maritime

Administrative Assistant  
Fish and Operation  
Mgmt.



Sustainability

Port  
of Seattle®

# Pollution Control

## SUBSECTORS



Maintenance



Engineering





# Maintenance

**Sr. Environmental Program  
Manager**

**Environmental Analyst**



Sustainability

Port  
of Seattle®

# Senior Environmental Program Manager



- Responsibilities: Coordinating and/or preparing permit submittals, Monitoring program, etc.
- Education: Bachelor's degree in environmental sciences, Environmental engineering , or related field, Master's degree in Environmental science & engineering, or related field.



Sustainability

Back





# Environmental Analyst

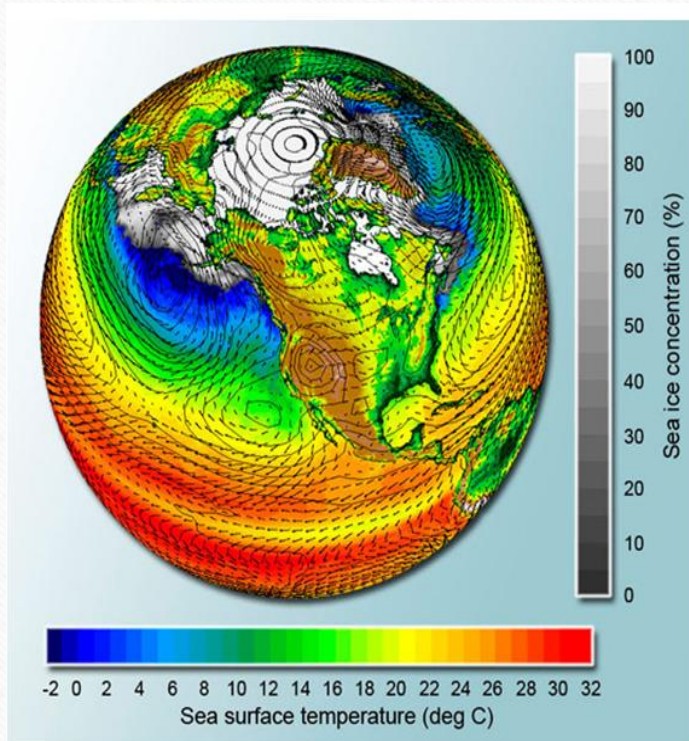


- Responsible for studying, examining human effects & impacts on various aspects of the planet.
- Education: Bachelor's degree in environmental science & science-related field.
- Salary: \$50k-\$94k per year



Sustainability

# Climate Data Analyst



- Ingest and evaluates the complex climate data, catalogs the sources of climate data used in research, & runs advanced statistical analysis.
- Education: Bachelor's degree in scientific-related field
- Salary: \$76k-\$101k



Sustainability

Port  
of Seattle®



# Engineering

**Environmental  
Protection Specialist**

**Air pollution Control  
Specialist**



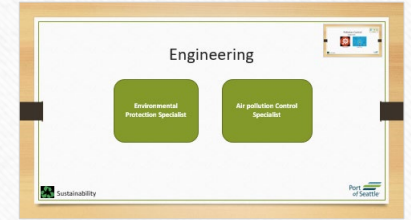
Sustainability

Port  
of Seattle®

# Environmental Protection Specialist



- Collecting water, oil, food, other types of samples for testing; analyzing samples to identify pollution or potential environmental threats; preparing reports of findings; & developing plans to correct or avoid pollution problems.
- Education: Bachelor's degree in scientific-related field; engineering backgrounds to help with technical responsibilities.
- Salary: \$86k-\$100k per year

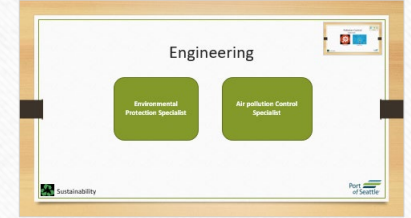


Sustainability

Port  
of Seattle®



# Air Pollution Control Specialist



[This Photo](#) by Unknown Author is licensed under [CC BY-SA](#)

- Designs, conducts, and evaluates our modern, investigation and control programs, and motor vehicle test programs
- Education: Bachelor's degree in Environmental science or a science-related field, master's degree for advancement.
- Salary: \$67k-\$92k per year



Sustainability

Port  
of Seattle®

# Weather and Climate

## SUBSECTORS



Maintenance



Engineering

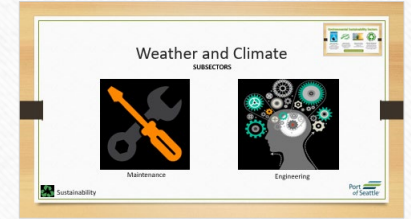


Sustainability



# Maintenance

Environmental Program  
Manager



Sustainability

Port  
of Seattle®

# Environmental Program Manager



- Oversee activities and interactions with environmental regulatory agencies. Preparing reports and work plans.
- Education: Bachelor's degree in Science-related field



Sustainability

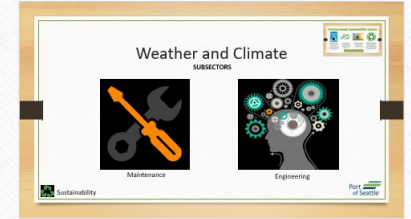
Port  
of Seattle®



# Engineering

Environmental Engineers

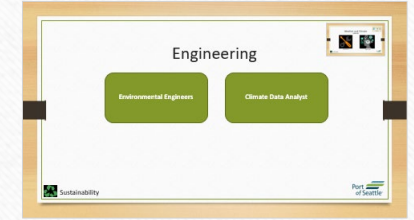
Climate Data Analyst



Sustainability

Port  
of Seattle®

# Environmental Engineering



- Salary: \$50k-\$98k per year
- Design projects that lead to environmental protection, such as water reclamation facilities or air pollution.
- Education: Bachelors degree in Environmental engineering or related fields.



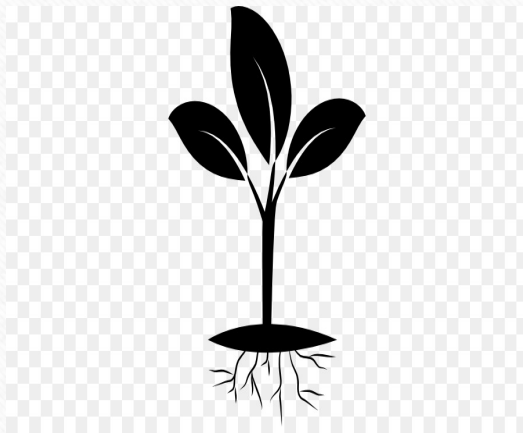
Sustainability

Port  
of Seattle®



# Solid Waste Management

## SUBSECTORS



Contractor



Engineering



Maintenance



Sustainability

# Contractor

Urban Planner

Arborist

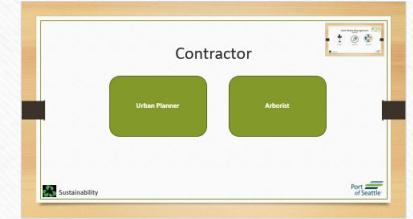


Sustainability

Port  
of Seattle®



# Urban Planner



- Develop land-use plans and programs that help create community's, accommodate population growth, and revitalize physical facilities in town, cities, countries, and metropolitan areas
- Education: Bachelor's degree in economics, geography, political science or environmental design Master's degree from an accredited urban or regional planning program.
- Salary: \$42k-\$86k per year



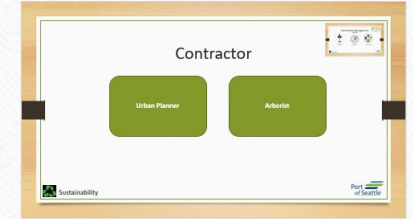
Sustainability

Port  
of Seattle®

# Arborist



- Maintains trees and shrubs throughout trimming and pruning to ensure they don't interfere with public works power lines, roads, or sidewalks
- Bachelor's degree in related field as biology, horticulture, or botany.
- Salary: \$28k-\$77k per year



Sustainability

Port  
of Seattle®



# Engineering

Stormwater  
Engineering



Sustainability

Port  
of Seattle®

# Stormwater Engineering



- Responsible for designing solutions to complex Stormwater management problems this includes managing surface water runoff, designing green and gray infrastructure
- Education: Bachelor's degree, master's degree or graduate level certificate
- Salary: \$78k-\$93k per year



Sustainability

Port  
of Seattle®



# Maintenance



**Sr. Environmental  
Management Specialist**

**Stormwater Facilities  
Maintenance**

**Stormwater Program  
Manager**



Sustainability

Port  
of Seattle®

**Maintenance**

St. Environmental Management Specialist

Stormwater Facilities Maintenance

Stormwater Program Manager

AEC Sustainability

Part of Seattle



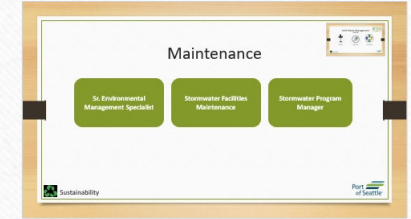
- Salary: \$43k-\$118k per year
- Monitors stormwater conditions, recommends changes to maintenance schedules, and performs technical, analytical, and administrative task
- Education: College



## Sustainability



# Stormwater Program Manager



- Salary: \$75k-\$94k per year
- Responsible for the overall management including, developing, implementing and maintaining environmental stormwater compliance programs
- Education: bachelors degree majoring in environmental or civil engineering



Sustainability



# Interviews



Tiffany Sevilla



Kenny Lyles



Anita Simmons



Stephanie Riley

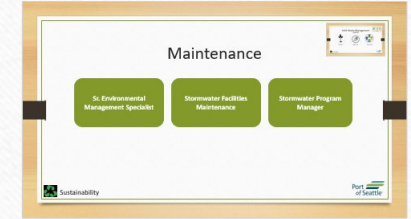






# Tiffany Sevilla

SR. Environmental mgmt. Specialist

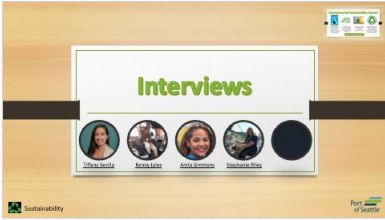


- Manages: Storm water at the airport, makes sure its clean around airport, & supports the recycling & waste program
- Education: 2-3 years of work experience in environmental job, bachelors degree of science and masters degree in engineering
- Challenges: physically navigating the airport, not knowing who to ask questions
- Advice: request to connect with people and let them know that your interested in their work
- Positive & negative affects (environment): Makes sure everyone has a safe & sanitary experience, no cigarette bud, oil, & trash into the Puget sound drain during rain. Airport recycles a lot of waste.
- Salary: \$63k-\$85k per year



Sustainability

Port  
of Seattle®



# Kenneth Lyles

## Director of Maritime Operations & Security



- Responsibility: Marinas; makes sure boats are following set environmental rules, the Commercial Harbor's at the Port of Seattle
- Started in HR, went to work at the airport and got the opportunity to work in Maritime
- Education Level: High School Diploma & Associates Degree
- Salary: \$95k-\$100k per year



Sustainability

Port  
of Seattle®





# Anita Simmons

SR. Administrative Assistant  
Fishing & operations Mgmt.



- Manages security, Terminal 91, Fishers Corp.
- Education: High school & Associates Degree
- Challenges: Male dominance, confidence in ability to make a difference, and being the only female of color in the room.
- Hoped in the industry: Women Empowerment & Diversity
- Advice: Research on jobs before applying, Interview people in the industry to see what it's like to work in that field, ask for facility tours
- Salary: \$60k-\$65k per year



Sustainability

Port  
of Seattle®



# Stephanie Riley

## Maritime Marketing Project Mgr.

- About her job: Supports revenue business, boating marinas in marketing & outreach. Online campaign to generate more business during the winter & writing POS blogs.
- Events: Trade shows & Boat shows; 30+ events throughout the year.
- Education: High school Diploma – 2 years' work experience/bachelor's degree in communication or business.
- Environment benefits: Promoting environmental projects / programs. Message, blog, post, graphic, flyers so people know the work the environmental team is doing; also clean Mariana's
- Salary Range: \$65k-\$75k



Sustainability

Port  
of Seattle®