

Port of Seattle Connections

Port of Seattle Washington sent this bulletin at 11/06/2020 08:00 AM PST

Email Address

Subscribe

Share Bulletin



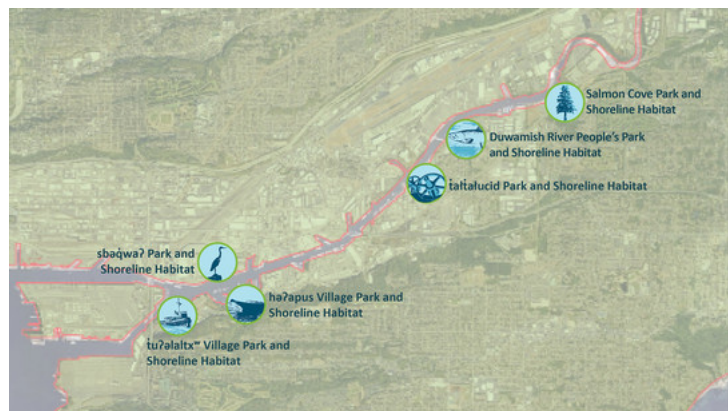
Having trouble viewing this email? [View it as a Web page.](#)



COMMUNITY

Port announces new names for six Duwamish River parks

Six Port-owned parks and shoreline habitat areas along the Duwamish River have been renamed to names that reflect the cultural, historical, and environmental significance of each site. Four names are in Lushootseed, one of the Coastal Salish languages. The Port Commission voted to adopt these new names after a months-long community outreach effort. Over 4,000 public comments were received and over 12,000 individuals engaged with the program's educational website to learn about each park's history and find stories from nearby community members and park users. To commemorate the new names, the Port has released [The Power of Our Stories](#), a video art piece featuring storytellers from the Suquamish, Duwamish, and Muckleshoot tribal communities. [Keep Reading →](#)



TAKING FLIGHT

COVID-19 testing pilot launches for SEA passengers



Travelers seeking a COVID-19 test prior to air travel now have a new option. As part of a pilot program that will run through January 31, 2021, Discovery Health MD is offering testing for ticketed travelers at Seattle-Tacoma International Airport (SEA). Testing will occur in the central auditorium at SEA, located pre-security, on the mezzanine level above ticketing and the security checkpoints. [Keep reading →](#)

EXPANDING OPPORTUNITY

Scholarship supports next generation of leaders



This year the Blacks in Government (BIG) Employee Resource Group Port chapter awarded two \$1,000 scholarships to Seattle-area college students Victoria Mulugeta and Elijah Jones. The chapter has awarded scholarships to Seattle-area college students for the past 10 years as it works to promote equity in all aspects of American life, excellence in public service, and opportunity for all Americans. [Keep reading →](#)

COMMISSION

Espresso in the morning, orcas in the evening



Port Commission Vice President Fred Felleman writes that there's a delicate — and valued — balance between urban life and nature in our region that we can't take for granted. Through the Quiet Sound Program, we are making progress to protect our iconic orca and other whale species while creating diverse opportunities for maritime jobs. [Keep reading →](#)

MARITIME

Ocean app crowdsources scientific observations



Dr. Christine Ward-Paige developed a way to make science real time and accessible to all through a mobile app and dashboard, called [eOceans](#), built for scientists and citizen scientists and teams to log and track the issues that matter to them. eOceans was one of 11 startups who participated in the inaugural Maritime Blue Accelerator cohort. [Keep reading →](#)

COMMISSION

Port Commission meeting recap

[READ MORE →](#)

RECAP: OCTOBER 27

The Port Commission adopted new names for six Port-owned public access and habitat sites along the Duwamish River and heard briefings on the Tax Levy Draft Plan of Finance for 2021-2025 and the DRAFT State Legislative Agenda for 2021. [View video →](#)

UP NEXT: NOVEMBER 10

The Port Commission will hold public hearings on the adoption of the final 2021 Port budget and 2021 property tax levy. The Commission will also consider the replacement of distressed pavements and supporting infrastructure for the 2021 portion of the 2021-2025 Airfield Pavement and Supporting Infrastructure Replacement Program at SEA Airport, and hear a Q3 2020 Financial Performance Briefing.

In Case You Missed It



FROM AN OMELET TO PERSONAL PRONOUNS:
Why the language we use to refer to people matters.

[Keep Reading→](#)



AIRPORT TRAVELERS BRAKE FOR CHEESE Beecher's Beer and Wine Bar is now open.

[Keep Reading→](#)

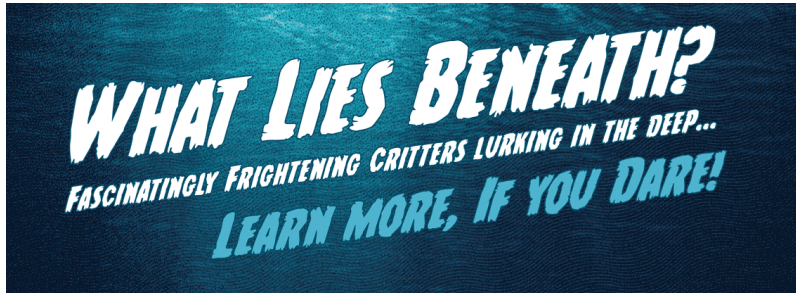


revolution. [Keep Reading→](#)

PORT ART EXHIBIT: Four handstitched quilts tell the story of an era defined by pandemic, recession, and civil rights



REMEMBERING JACK BLOCK:
We mourn the passing of a champion for working people, free trade, and those who need help the most. [Keep Reading→](#)



CONTACT US

Have a question or suggestion?

Email us at connections@portseattle.org

Copyright © 2020
All rights reserved

Port of Seattle
2711 Alaska Way
Seattle, WA 98121

Port of Seattle
Commission

Stephanie Bowman
Ryan Calkins
Sam Cho
Fred Felleman
Peter Steinbrueck

Port of Seattle
Executive Director

Stephen P. Metruck

Powered by



[Privacy Policy](#) | [Cookie Statement](#) | [Help](#)