



AIRFIELD/RAMP DRIVING REMINDER.

Rules are here to keep us safe!

While driving on the ramp and airfield it is critical to follow Airport Rules & Regulations:

No person or company, vehicle or equipment shall:

Fail to follow or use designated roadways, walks or crosswalks.

Utilize and Follow Drive Lanes to the maximum extent possible, where provided, unless specific authorization to the contrary is given by a Port employee.

SAFETY RULES TO KEEP YOU SAFE

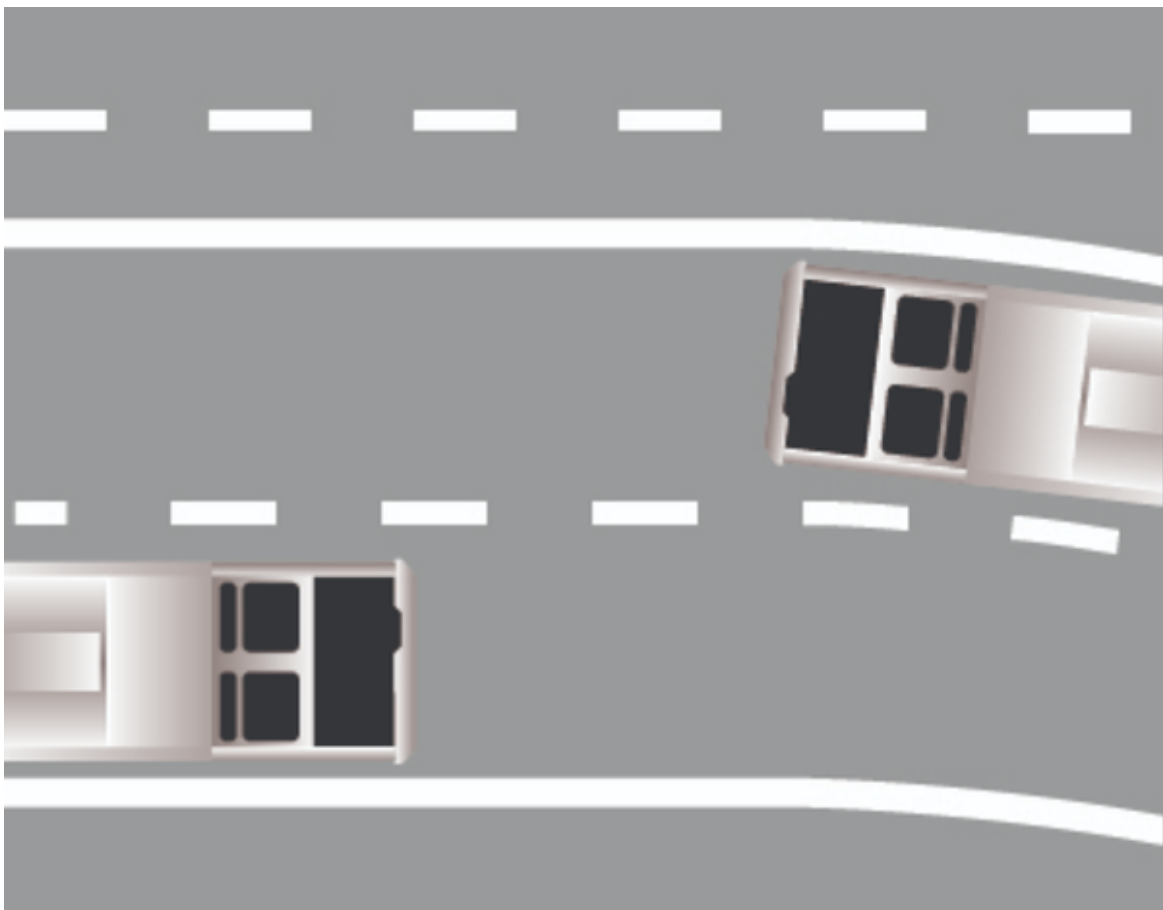
BE AWARE
of your
surroundings

ALWAYS
FOLLOW THE
SPEED LIMIT
(5 mph in aircraft
safety envelope)

BE PREPARED
to yield or stop
when necessary

NEVER RUSH!!!

ALWAYS WEAR YOUR SEATBELT.
SEATBELTS SAVE LIVES!



SEA Rules and Regulations - Section 6: AIRFIELD OPERATIONS AND DRIVING

More information can be found online:

<https://www.portseattle.org/page/airport-tariffs-rules-and-regulations-sea-tac>

FOR IMMEDIATE NOTIFICATION, DISTRIBUTION & COMMUNICATION

Please Forward to ALL Airport Staff

CONTACT US

For follow up questions please contact SMS Team at SMSspecialist@portseattle.org