



February 24, 2022

Welcome!

PortGen: Major Construction & Consulting

Diversity in Contracting Department

Welcome

Lawrence Coleman, Women and Minority Business Enterprise Manager

Widen Arrivals Approach Bridge

Tim Meyer, Capital Project Manager III

Checkpoint 1 Relocation

JJ Jordan, Capital Project Manager

Post IAF Airline Realignment

Sean Anderson, Capital Program Leader

Widen Arrivals Approach Bridge

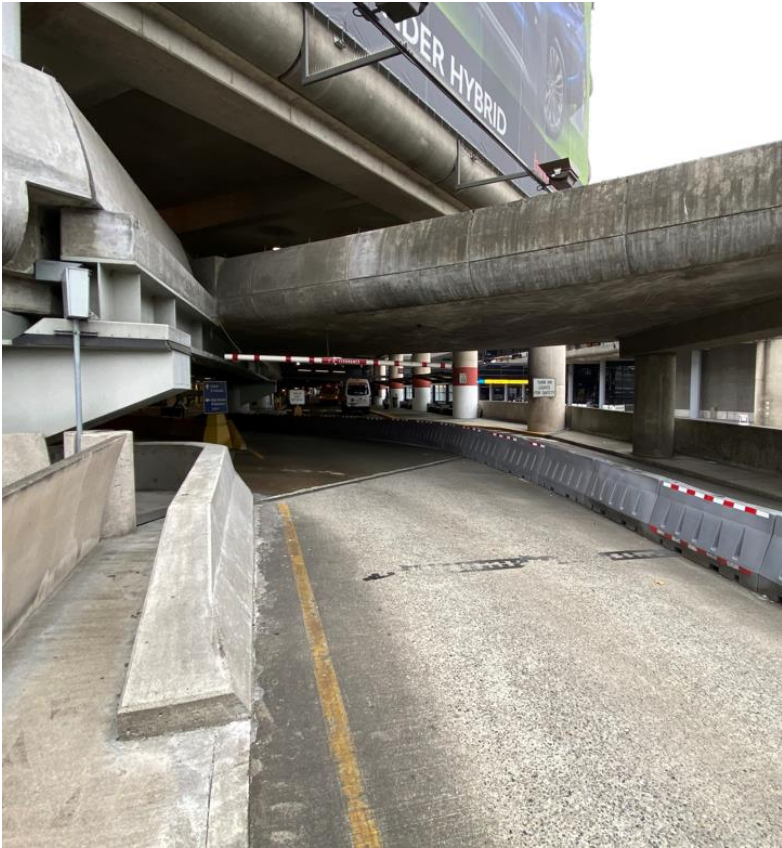
Tim Meyer, Capital Project Manager III

Project Scope

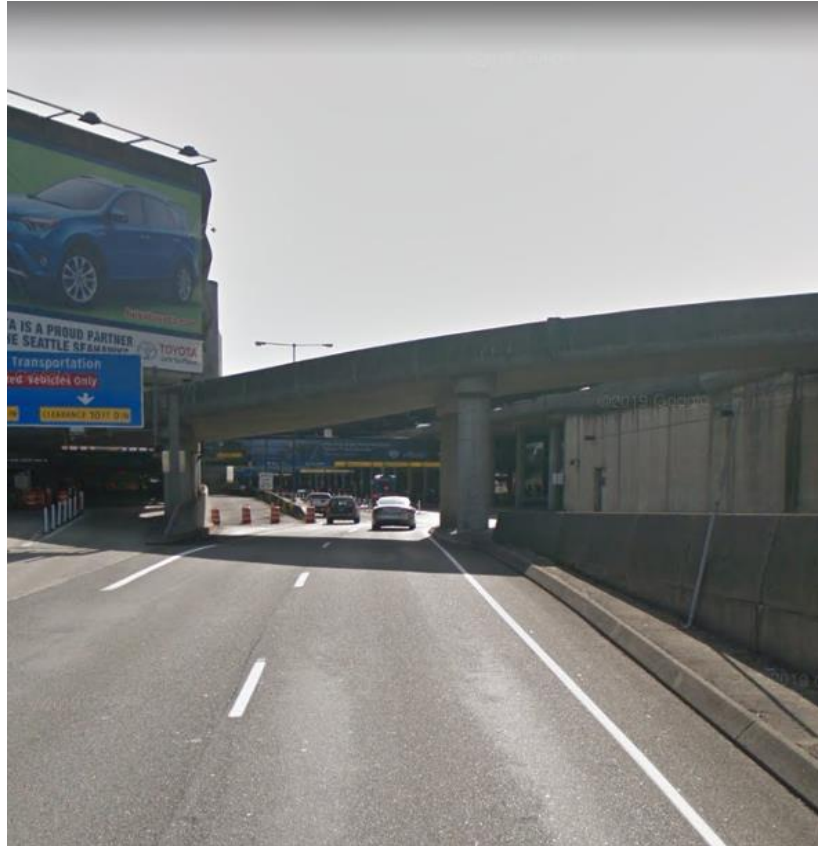
- Remove a 130' long and 30' wide bridge
 - Bridge spans over the arrivals drive
 - Bridge has 3 spans and 4 columns
 - Southern span is inside the parking garage
- Re-establish 60' of cast-in-place concrete barrier
 - Both the departures and garage sides
- Re-establish 160' of 8" storm drainage
- Incidental roadway striping, asphalt patching, excavation, traffic control



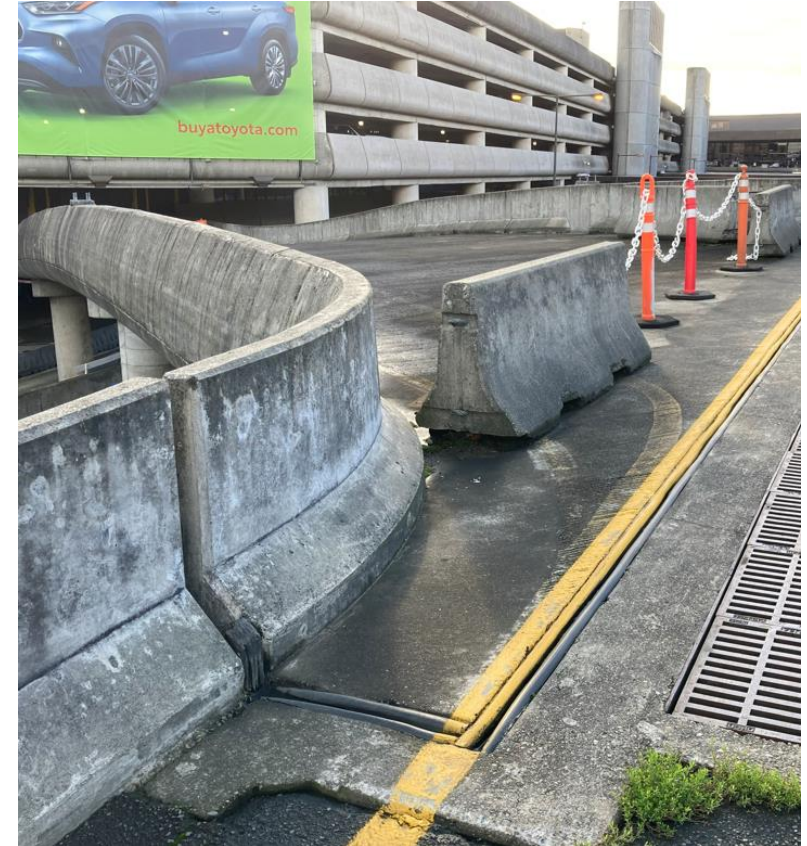
Existing Conditions



Southern Span



Center Span



Northern Span

North American Industry Classification System (NAICS)

238910 – Site Preparation Contractors

- Concrete breaking and cutting

237110 – Water and Sewer Line

- Storm Sewer Construction

237310 – Highway, Street and Bridge
Construction

- Painting traffic lanes

238110 – Poured concrete foundation and
structure contractor

- Concrete pouring and finishing

561990 – All Other Support Services

- Flagging (i.e., traffic control) services.

Women and Minority Business Enterprise
(WMBE) 12% Goal

ROM/Schedule

Rough Order of Magnitude (ROM) \$1,000,000-\$2,000,000

Schedule

Advertising and Award	April 2022
Execution of Contract	July 2022
Notice to Proceed	September 2022
Substantially Complete	December 2022
Physically Complete	January 2023

Note: Information provided is subject to change.

THANK YOU

QUESTIONS?

Checkpoint 1 Relocation

JJ Jordan, Capital Projects Manager

Project Scope and Purpose

- This project will relocate the existing checkpoint 1 from the ticketing level to baggage claim.
- The relocated checkpoint will increase the number of lanes from 3 to 5 for higher throughput in passenger screening.
- The relocated checkpoint will include enough queue space to contain passengers at peak periods.

Project Location



Current Configuration



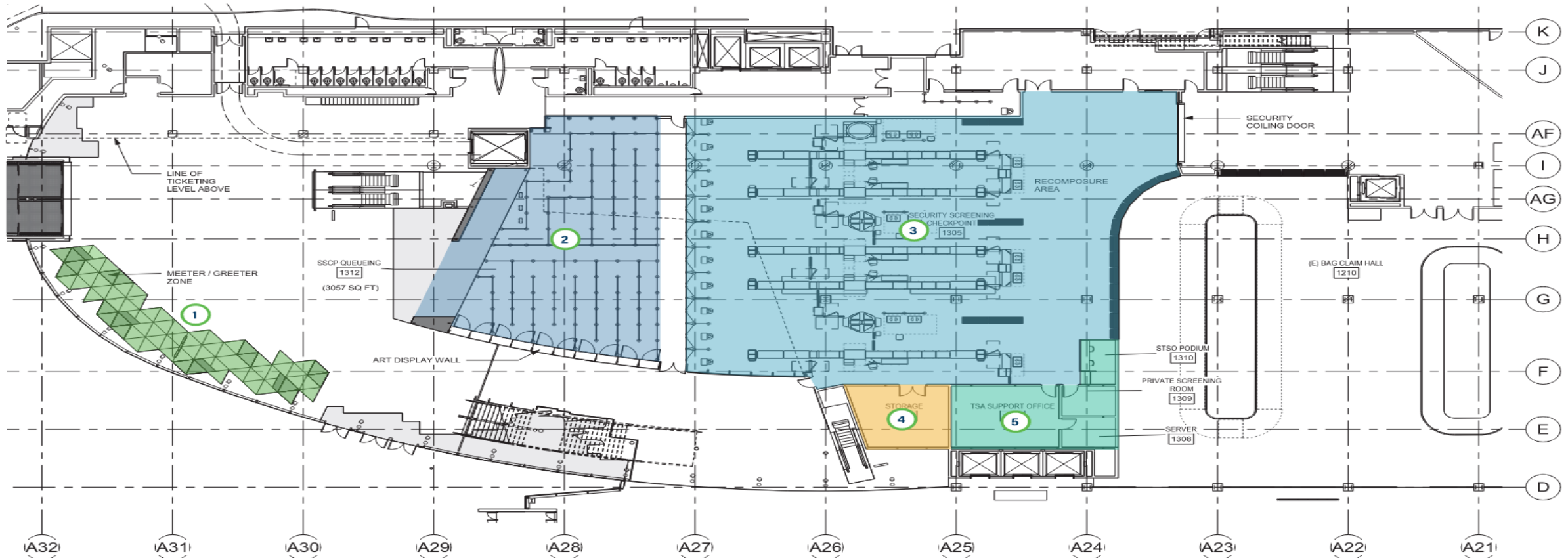
Future Configuration

Proposed New Layout

Figure 1-2: Bag Claim Level - Plan

KEY ELEMENTS

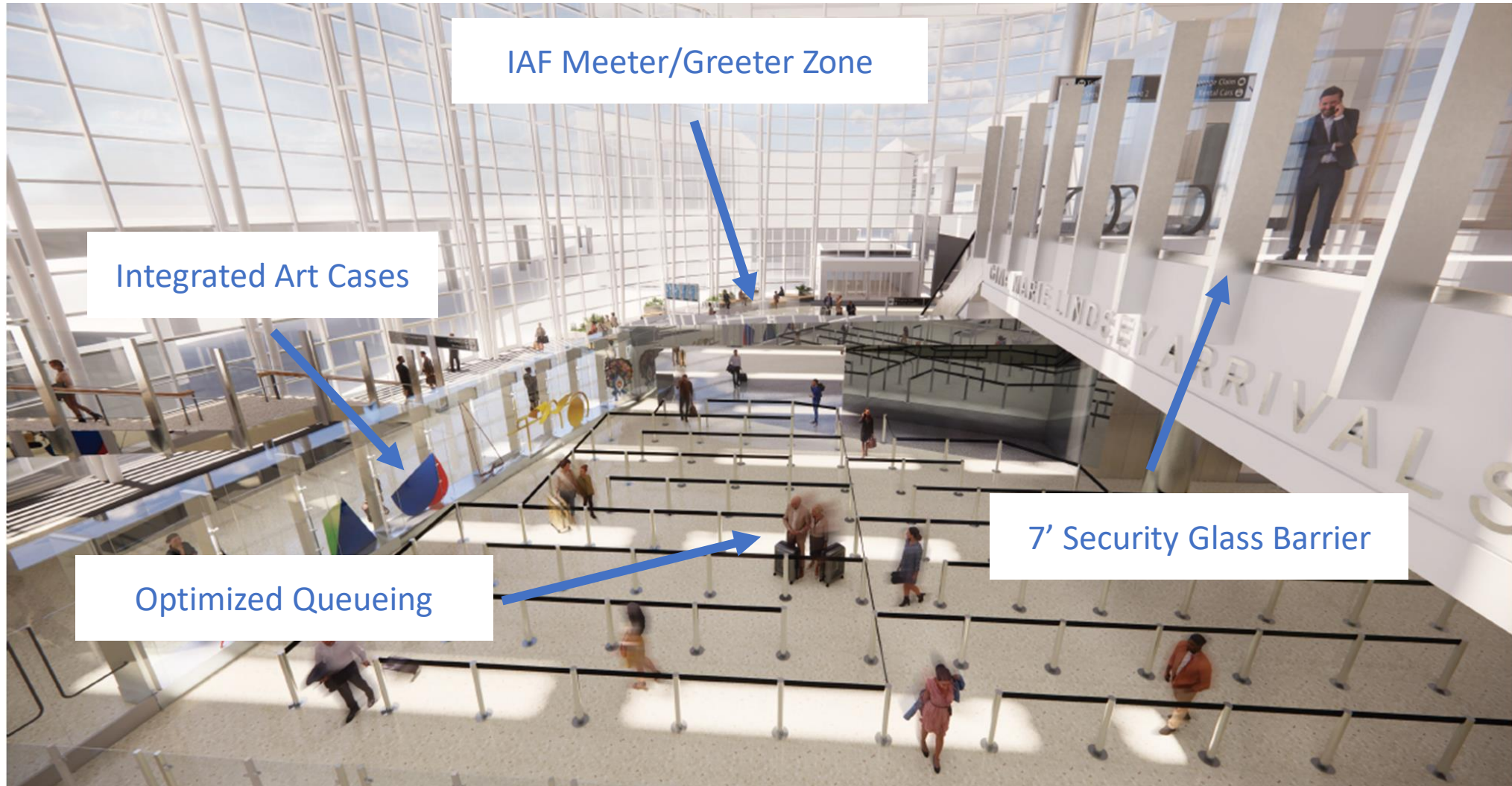
1. Meeter / Greeter Zone
2. Queuing Area
3. SSCP
4. Airport Storage
5. TSA Support Space



Major Scope Elements

- Large Area of Terrazzo Demolition and Replacement
- Extensive Signage and Wayfinding
- Structural Steel Supply and Installation
- Electrical and Communications
- Mechanical including new Fan Coil Units
- 7' Glass Railings and Glass Art Display Cases
- Relocation of a United Baggage Service Office
- Casework

Proposed New Layout



Integrated Art Displays



Conceptual Rendering



- Project Delivery is Design/Bid/Build
- Construction Phase to be delivered under a General Contractor
- Phasing may be complex due to operational needs of currently occupied areas.
- Total Project Estimate including design, FF&E, and construction is approx. \$35 to \$40 million with an estimated construction start in Q4 of 2022.

THANK YOU

QUESTIONS?

Katelyn McEneaney, Contractor

Project Objectives

To accommodate the opening of the International Arrivals Facility, this project will relocate United Airlines, a domestic only carrier at SEA, to Concourse B and move Delta Air Lines, a carrier with international flights at SEA, from Concourse B into those vacated gates and spaces on Concourse A.



Port Elements of Work:

- Concourse B Ramp Expansion
- Concourse A Ramp Level Improvements
- Zone 4 Ticket Counters Common Use Reconfiguration

United Airlines Element of work to be completed under a Memorandum of Agreement:

- United Lounge on Concourse B

Gate Improvements

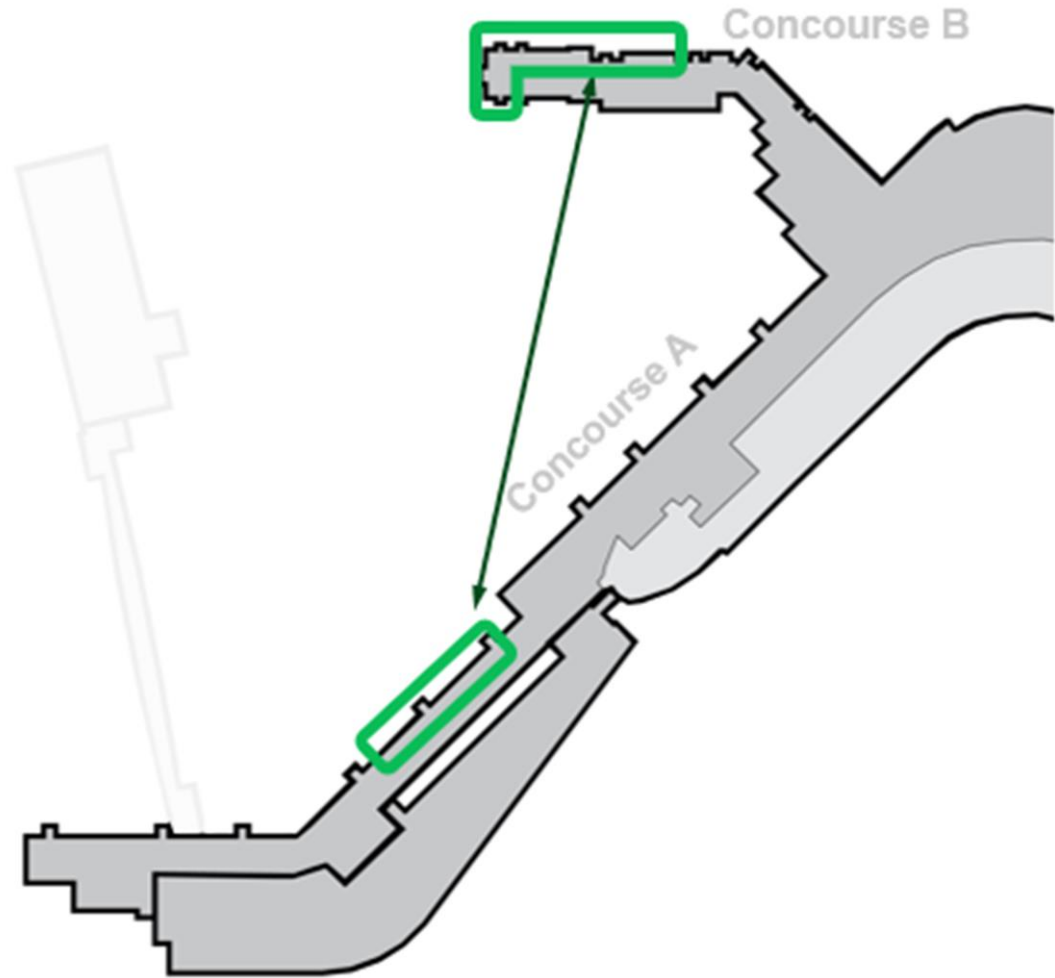
United Airlines

From Concourse A to Concourse B

Delta Air Lines

From Concourse B to Concourse A

These are improvements to the gates to accommodate UA's anticipated fleet mix and gate podium improvements.

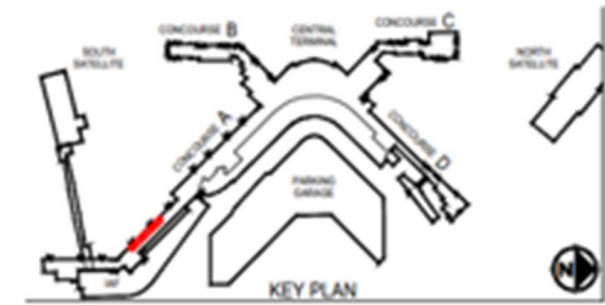


Gate Improvements



LEGEND

- AEROGROUP: Loading Bridge Gates (Full Gates)
- AEROGROUP: Ground Board Gates (Half Gates)
- AEROGROUP: Ticket Counters, Baggage Makeup, VIP Lounges, and Publicly-accessible Offices



United to relocate (3) gates to Concourse B
Delta Air Lines to move operations into these (3) gates at Concourse A

Gate Improvements

Delta to relocate off of 3-4 gates on Concourse B so that United can relocate. Designer should assume gates B7, B7A, B9 and B11 will be impacted.



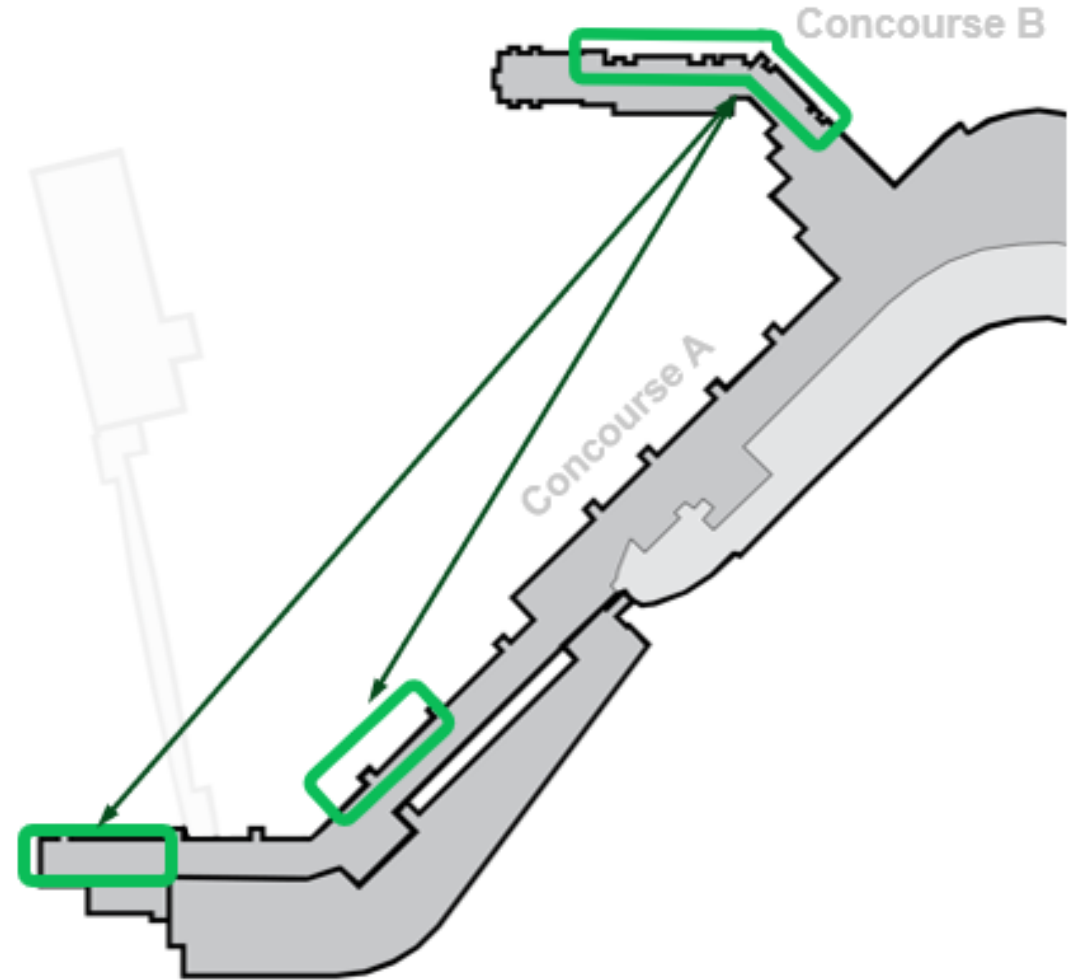
Ramp Level Office Relocations

United Airlines

From Concourse A to Concourse B

Delta Air Lines

From Concourse B to Concourse A



Ramp Level Office Relocations

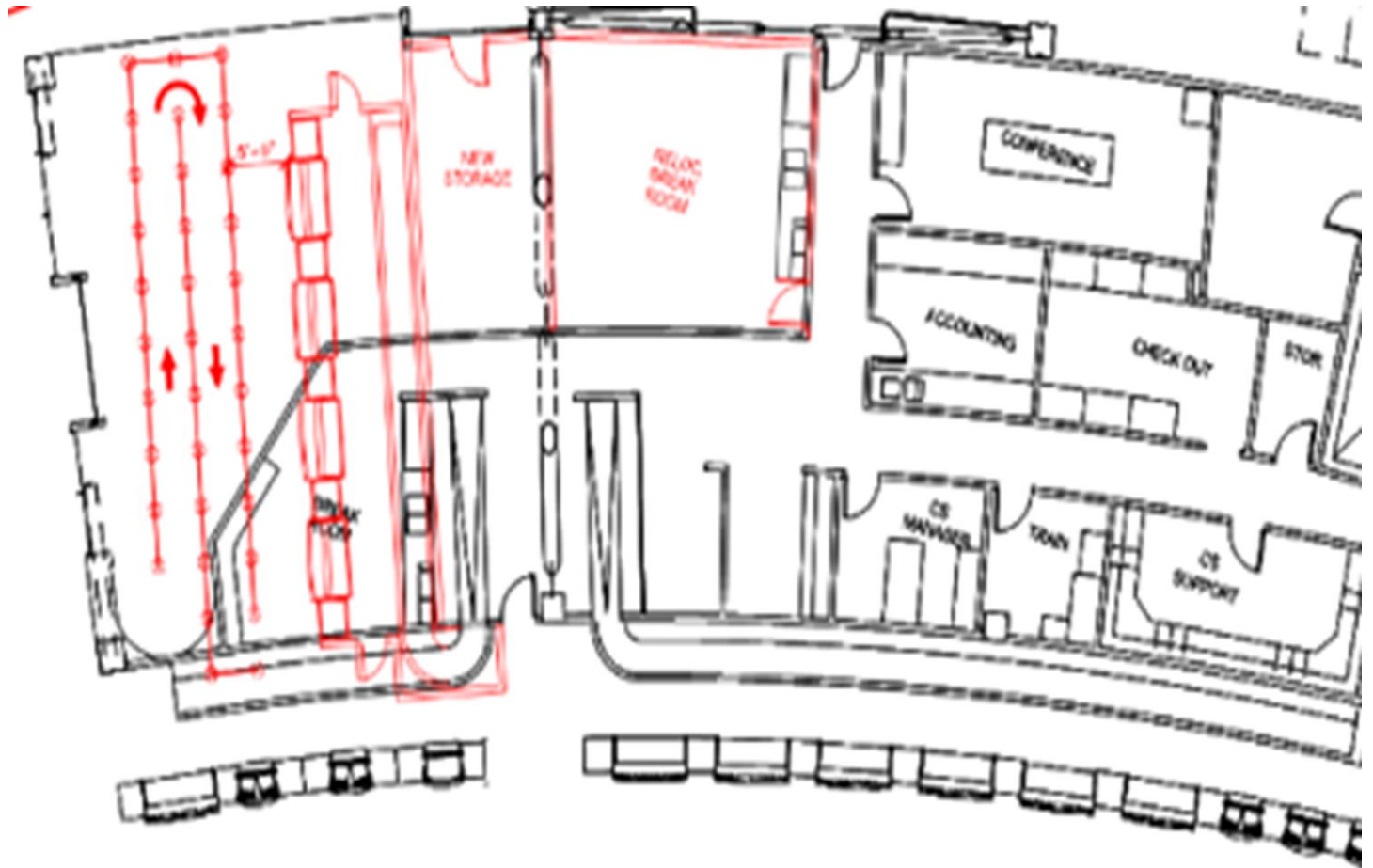


This project will build additional office and support space on Concourse B under the overhang on the ramp level. Open storage shown above will need to be relocated.

Zone 4 Common Use Reconfiguration

Zone 4

This project will reconfigure the space at Zone 4 to be Common Use Ticket Counters. This will require a lease buy-out of the ADR Hudson space.



Zone 4 Common Use Reconfiguration



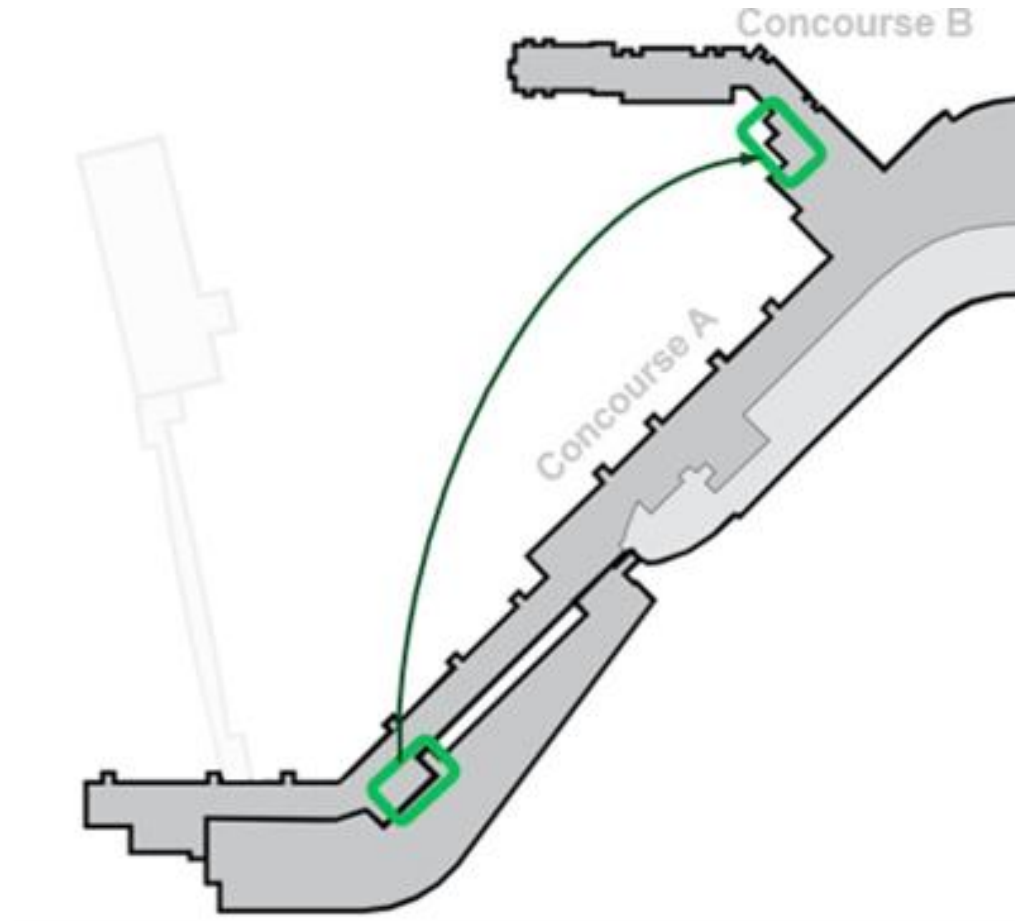
This project will reconfigure the space at Zone 4 to be Common Use Ticket Counters. This will require a lease buy-out of the ADR Hudson space.

United Lounge Relocation

United's Lounge

Relocate from Concourse A to
Concourse B

*This construction will be
completed by United Airlines
under a Memorandum of
Agreement*

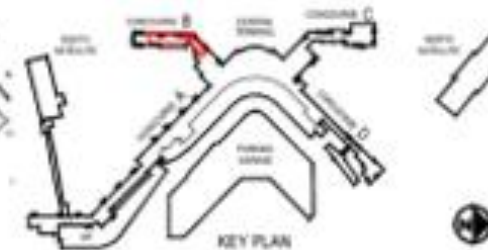


United Lounge Relocation

Existing AMEX Club Space: **4,610 SF**

Adjacent ADR Space: **1,114 SF**

Mezzanine Buildout: **1,584 SF**



Schedule Milestones

Activity	Date
Design Complete – UA Club	Q4 2022
Design Complete – Port Elements of Work	Q3 2023
Construction Complete – UA Club	Q4 2023
Construction Complete – Port Elements of Work	Q2 2025
Project Close-Out	Q2 2026

Schedule subject to change as project team evaluates timelines.

Project Management Support Services needed for the realignment of various aircraft gates and associated support spaces throughout Seattle-Tacoma International Airport

- Contract duration: 4 years
- Estimated Contract Value: \$3.5 Million
- Estimated Diversity in Contracting Aspirational Goal: 14%
- Expected Advertisement: March/April 2022

THANK YOU

QUESTIONS?

Diversity in Contracting Staff

Mian Rice

Director

Lawrence Coleman

Manager, Women & Minority Owned Business Enterprise

Lisa Phair

Manager, Disadvantaged Business Enterprise

Tina Boyd

Senior Coordinator, Small Business & Disadvantaged Business Enterprise

Yared Belete

Contract Diversity Coordinator

Josie Regan

Senior Administrative Assistant