

To view this email as a web page, go [here](#).



NORTH SATELLITE MODERNIZATION

Live Performances Debut the Marketplace at N Stage



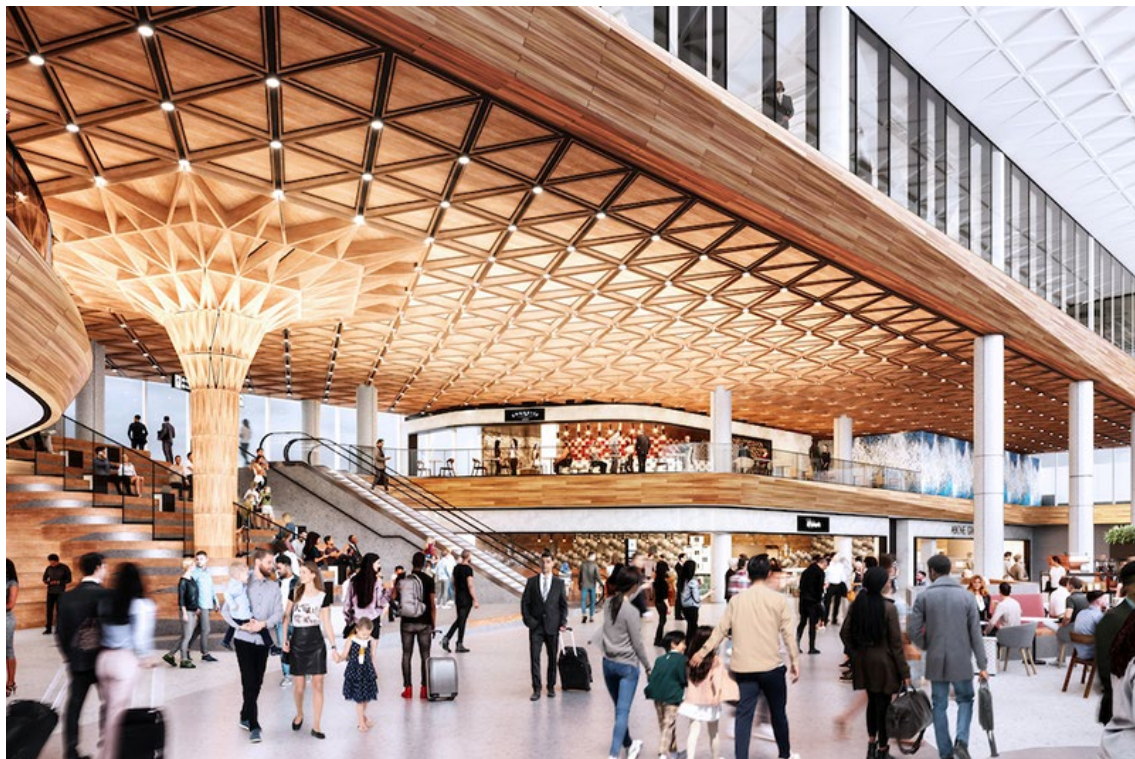
The Port of Seattle and Seattle-Tacoma International Airport (SEA) recently celebrated the end of major construction to the North Satellite, home of the N Concourse. Celebrations kicked off with [Experience SEA @ N](#), a festival of music, art, and poetry to introduce the brand-new performance stage.

Workers logged more than 2.1 million labor hours to build the facility over four years. The N Concourse now includes eight new passenger gates, a spectacular Alaska Airline's lounge, the airport's first system to collect and reuse rainwater, and many built-in amenities to make travel effortless for all.

[Learn about the New North](#) →

C CONCOURSE EXPANSION

Introducing the C Concourse Expansion



The C Concourse Expansion aims to elevate SEA, literally, by adding four additional floors above an existing section of the concourse that was previously office space. This transformative project will add 145,530 square feet for more dining and retail, airline lounges, and other amenities.

This project is the first of its kind planned under the Port's Sustainable Project Framework, a process adopted to reduce the environmental and societal impacts associated with capital projects. Planned sustainability energy initiatives include tenant all-electric hot water, tenant all-electric cooking, fossil-fuel free heating and cooling systems, and rooftop photovoltaics. The C Concourse

Expansion will also reduce food waste by providing more storage for SEA's food donation program to communities neighboring the airport.

Stay tuned for future bid opportunities through [Turner Construction](#).

[Read more about C Concourse Expansion](#) →

INTERNATIONAL ARRIVALS FACILITY

Welcome Here, Welcome Home



Excitement is mounting as the finishing touches for the International Arrivals Facility (IAF) are underway!

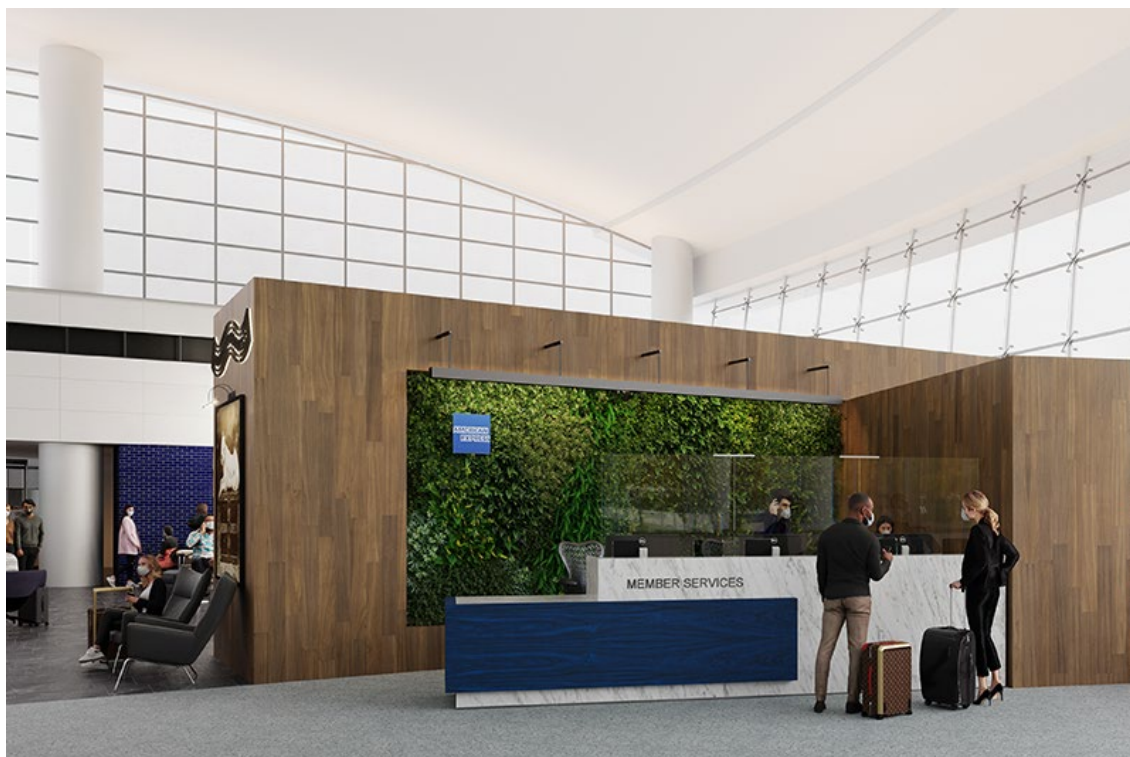
The airport's Operational Readiness, Activation and Transition (ORAT) team will complete final operational trials to prepare the facility for passengers, tenants, and staff. Activation milestones include systems checks for carousels and baggage handling, HVAC, waste management and restrooms, and drills for security and emergency response.

One of the most complex trials is the passenger flow simulation when hundreds of volunteers will act as passengers to test the facility before it opens to the public. Participants will evaluate the parts of their passenger journey like elevators and escalators, wayfinding and signage, baggage claim, inspection, and re-check. These are the imperative final steps to greet travelers with a welcome worthy of the Pacific Northwest.

[Preview the new facility →](#)

CENTRAL TERMINAL

AMEX Lounge Construction Underway



The Central Terminal Renovation Project is looking forward to exciting progress in 2022.

Salty's at the SEA

This Pacific Northwest seafood staple will begin construction in early 2022 for Salty's at the SEA and BrewTop Social, a two-level dining and craft beer experience. Offering stunning airfield views, Salty's at the SEA will feature warm service and award-winning menus that celebrate local fare, seasonal seafood, and regional wines. Upstairs at the BrewTop Social, travelers will enjoy an open-top dining experience with craft brews and gastropub fare.

American Express Centurion Lounge

Construction is underway for the new AMEX Centurion Lounge, scheduled to open later in 2022. The new design will triple its size to over 13,800 square feet and relocate to the south mezzanine level of the Central Terminal. It will also feature new seating areas that will take advantage of the open-air atrium location and have views of the airfield and the Olympic Mountains. Guests will enjoy updated restrooms, private phone rooms, noise-buffering workspaces, cozy nooks, and more.

[See the progress →](#)

ROADWAY CONSTRUCTION

Final Touches at Cell Phone Lot



Major construction wrapped up at the Cell Phone Lot. A new and direct bridged entrance route was created from the Southbound Airport Expressway to a new entry point on the south end of the lot. This change eliminates the conflict of incoming traffic delaying exiting vehicles heading to the terminal. GPS directions have been updated on Apple Maps and in the process of being updated for Google Maps.

[Read more about the improvements →](#)

S CONCOURSE RENOVATION

S Concourse Plan in Progress

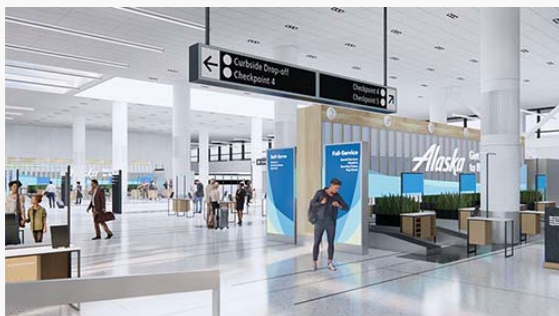


The S Concourse Renovation will update this 40-year-old building in order to keep up with the demand of both international and domestic travel and travelers' growing expectations of the airport experience. Today, 20 airlines serve 22 international destinations, such as London, Tokyo, and Seoul. This project is currently in the planning stages with construction anticipated to begin in 2023.

[Learn more about other SEA projects →](#)

NORTH MAIN TERMINAL REDEVELOPMENT

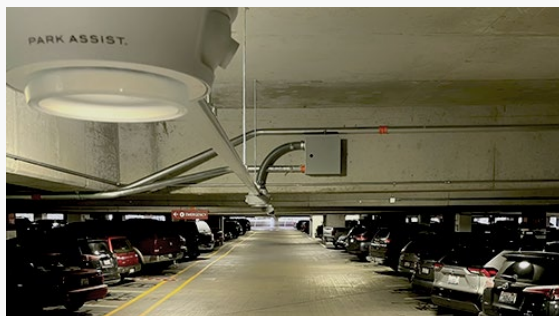
Terminal-wide Updates Coming



This multi-phased project updates the design of the airport terminal that acts as the front

GARAGE ENHANCEMENTS

Parking Garage Will Light the Way



The Automated Parking Guidance System (APGS) will feature colored light sensors.

door to SEA. It optimizes the pre-security experience for travelers from ticketing to bag claim and will enhance capacity, safety, and customer experience. The first phase of construction is spearheaded by Alaska Airlines with design build team, HOK and Hensel-Phelps. Alaska Airlines has a 20% small business and Women and Minority-Owned Business Enterprise (WMBE) goal for this work.

[Visit the project page →](#)

Floors 1 and 2 are currently being finished by Park Assist and anticipated to be in-use January 2022. Underground work has been completed at the over-height lot, exit toll plaza, north entry, and south entry to upgrade technology for safety and security monitoring. Installation progress is being made on the sublevel and 6th floor as well as electric vehicle (EV) charging installation on the 4th floor.

[Read more about the APGS project →](#)

Bid Opportunities

Find Port procurement and contract information at VendorConnect.

[Go to VendorConnect](#)

Learn About Upcoming Projects

Interested in doing business at SEA Airport? Check out our [Diversity in Contracting](#) webpage. Sign up to join a [PortGen](#) workshop and hear from Port staff, learn about new projects, and network with other business.



Did you know?

One percent of the capital project budget for each project is dedicated to artwork!

CONTACT US

Have a question or a suggestion?

Email us at SEAcustomer@portseattle.org

Copyright © 2021 All rights reserved

**Port of Seattle
Commission**

Stephanie Bowman
Ryan Calkins
Sam Cho
Fred Felleman
Peter Steinbrueck

**Port of Seattle
Executive Director**

Stephen P. Metruck

SEA

Seattle-Tacoma
International
Airport

Operated by the Port of
Seattle



This email was sent by: Port of Seattle
2711 Alaskan Way, Seattle, WA, 98121 US

[Privacy Policy](#)

[Update Profile](#)

[Manage Subscriptions](#)

[Unsubscribe](#)