

To:
Subject:
Date:

Connections: Join Us For the Opening of Duwamish River People's Park Friday, July 8, 2022
12:31:53 PM

To view this email as a web page, go [here](#).



COMMUNITY

Join Us For the Opening of Duwamish River People's Park

Celebrate the opening of Duwamish River People's Park and Shoreline Habitat (formerly Terminal 117), the largest habitat restoration site along the Duwamish River in a generation! Join the Port of Seattle from 11:00 a.m. to 3:00 p.m. on Saturday July 16, 2022 for a commemorative ceremony, park tours, family friendly art activities, educational booths, kayak tours, Hub Open House, and local catering.

[Keep reading →](#)



TAKE FLIGHT

Summer Travel Tips for Low Stress Travel at SEA Airport

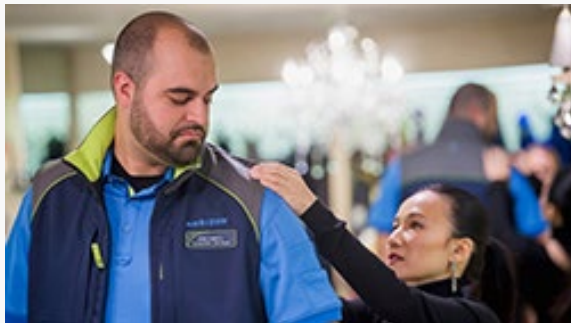


Summer travel is in full swing and SEA Airport is bustling with travelers. SEA Airport forecasts that the number of passengers in 2022 are almost the same as before the pandemic – around 6% below 2019 levels. Be sure to plan ahead for a smooth and low-stress travel experience. Follow the tips at the link to make your trip more predictable and enjoyable!

[Keep reading →](#)

CRUISE

Global Connections and Tourism Buoy Seattle Fashion



Seattle fashion designer Luly Yang's personalized approach to design and creative and innovative style attracts clients from the Seattle region, across the country, and around the world. Yang's showroom location – in the downtown core in a luxury hotel, in a city that is a hub for both international and domestic direct flights via SEA – is the perfect place to conduct global business. The showroom also draws in tourists and cruise passengers.

[Keep reading →](#)

HEALTHY HABITATS

SEA Airport Continues Salmon-Safe Protections for the Environment



The Port of Seattle continues to lead the way in the region's environmental stewardship through habitat restoration and water quality protection that helps salmon spawn and thrive in our local waterways. These efforts are reflected in its Salmon-Safe certification. The Port Commission recently approved a first step toward validating these efforts for the next 20 years at SEA Airport.

[Keep reading →](#)

HEALTHY HABITATS

Measuring Maritime Emissions at the Port of Seattle



The Port relies on greenhouse gas emission inventories to track our progress against ambitious goals to phase out emissions. We launched a new [Maritime Emissions Data Explorer Dashboard](#) this year as part of our preparations for the next iteration of the Puget Sound Emissions Inventory. This new dashboard visualizes data from the 2016 Puget Sound Maritime Emissions Inventory in Tableau, and also includes data on cruise shore power use.

[Keep reading →](#)

COMMISSION

Port Commission Meeting Recap

[Read more →](#)

RECAP JUNE 28: The Port Commission executed a contract for the Port's Salmon-Safe Certification, and a contract for Supplemental Customer Service Operational Staffing at Seattle-Tacoma International Airport. Commissioners also executed a pre-construction services contract in support of the Primary Fire Station Continuing Operations Preservation Project at SEA and reviewed a Port of Seattle Police Department 2021 Annual Report. [View video→](#)

UP NEXT JULY 12: The Port Commission will issue a proclamation aligning Port of Seattle Policing Policy with Washington State Governor Jay Inslee's Directive prohibiting cooperation or assistance with out-of-state abortion and other

reproductive health care investigations, prosecutions, or other legal actions, and review a Bringing Access Equity to the Port's Website report and a Maritime Blue Annual Report.

Commissioners will consider executing a ground lease to develop approximately 399,337 sf of aviation-supportive, light-industrial logistics facilities West of the Des Moines Creek Business Park. Commissioners will also consider executing a Joint Partnership Agreement with the Seattle Metropolitan Chamber to develop and pilot a Community Business Connector Initiative for two years.

In Case You Missed It



POLICE CHIEF SEARCH The Port held a virtual public forum for tenants, customers, and community members to meet the police chief finalist candidates. [View the recording→](#)



SAFE FISHING To prevent accidental fisher deaths, the annual Fishermen's Memorial Safety Fair educates new and seasoned fishers on effective methods to mitigate hazards. [Keep reading→](#)



COMMISSION MEETINGS Follow the link to view upcoming meeting agendas, watch previous meetings, find the most up to date information, and learn how to tune in to the next meeting. [Keep reading→](#)



REUSE, REPURPOSE, RECYCLE Learn about reused features and repurposed materials incorporated throughout Duwamish River People's Park. [Keep reading→](#)

Share Your Waterfront Adventures

Summer on the waterfront is finally here and it's time to get outside! Whether it's kayaking around Elliott Bay, enjoying lunch or dinner with a view, or launching a sailboat out of Shilshole Bay Marina, we are here for it.

Want to make a splash? Snap a photo and share your favorite summertime Seattle waterfront activities with **#SeaportSummer** for the chance to be featured on Port of Seattle social channels and our website.

SEA YOU ON THE WATER!



Tag us in your waterfront frolics! [#SeaportSummer](#)

CONTACT US

Have a question or a suggestion?

Email us at connections@portseattle.org

Copyright © 2022

All rights reserved

**Port of Seattle
Commission**

Ryan Calkins
Sam Cho
Fred Felleman
Toshiko Hasegawa
Hamdi Mohamed

**Port of Seattle
Executive Director**

Stephen P. Metruck

Port 
of Seattle®



This email was sent by: Port of Seattle
2711 Alaskan Way, Seattle, WA, 98121 US

[Privacy Policy](#)

[Update Profile](#)

[Manage Subscriptions](#)

[Unsubscribe](#)