

To view this email as a web page, go [here](#).



Check out the major upgrades happening at SEA!

UPGRADE SEA

Introducing Upgrade SEA



SEA is upgrading in a big way and travelers will see improvements to every aspect of the passenger journey; services and amenities, curb to gate, start to finish. The [Upgrade SEA](#) campaign is your one-stop-shop for all that's going on with capital projects at the airport, whether it's new projects, exciting developments, or future impacts.

SEA's capital projects are getting innovative and pushing the envelope, finding ways to expand and improve within the footprint of our beloved SEA, and building up instead of out. Upgrade SEA is not only a capital construction program, but a communications campaign to make sure if changes are coming, you know about them.

[Learn about all the Upgrade SEA projects →](#)

SEA GATEWAY PROJECT

Budget Approved for Second and Final Phase for Project Construction



The SEA Gateway Project was recently approved by the Port of Seattle Commission for the final funds for Phase B of construction. The project is currently in Phase A which involves building out additional space in the Promenade Level, installing structural upgrades and building system infrastructure for the additional space, installing ADA ramps on the Baggage Claim Level, and updating architectural finishes. Phase B will focus on reconfiguring the north end of the Ticketing Lobby and surrounding area as well as reconfiguring Checkpoint #5.

See an early [sneak peek](#) of the fly through rendering. Check out the reconfigured areas and get an overview of this newly redesigned space.

Access [ongoing bid opportunities](#) from contractor, Hensel Phelps.

[Learn what's next for this project →](#)

CURBSIDE ACCESSIBILITY AND SAFETY

All Systems Go for Accessibility and Safety Improvements



Recently, Skybridges 1 and 2, as well as areas along both the Arrivals and Departures Drives have received the bollard treatment. These security posts are helping to prevent automobiles from entering where they shouldn't, increasing security and safety measures, thus improving the safety of all SEA travelers. Curbs cuts have also been installed, making the drives more accessible for all passengers.

Impacts from construction are ongoing as the work continues to move along through the spring into summer. Closures to Skybridge 5 and 6 are happening as well as various impacts to the Courtesy Vehicle Plaza and both drives. This work is on track to be completed later this year.

[Read more about the Curbside Accessibility and Safety Program →](#)

AUTOMATED PARKING GUIDANCE SYSTEM

Find a Stall Quickly in the Parking Garage with New Park Assist Guidance System



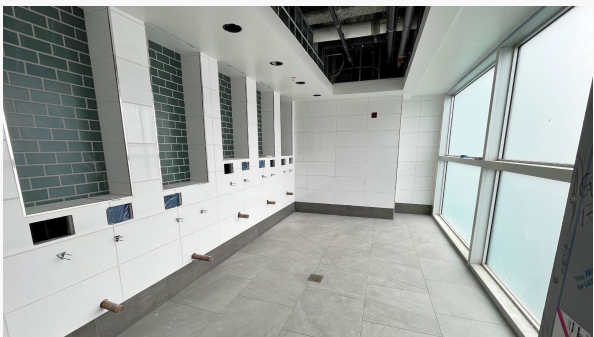
SEA is closing in on completion of its new Automated Parking Guidance System in the Parking Garage. The airport is installing new and innovative technology by Park Assist to help travelers navigate the garage and find an open stall more efficiently. This project has also nearly doubled the number of electric vehicle (ev) charging stalls in the facility, from 48 to 94, which are currently active on Levels 4 and 7.

The project has successfully activated this system on Levels 1, 2, 5, 6, and 7. Next up is activating and commissioning on Levels 3, 4, and 8. This project will be completed by mid-year with every level of the Parking Garage available with this new system.

[Learn more about the Automated Parking Guidance System →](#)

RESTROOM RENOVATION

Phase 4 Includes All-Gender Restroom



The Restroom Renovation Project is closing in on Phase 4 completion with new restrooms coming near Gates B8, D2, and C2. The new restroom near Gate D2 is a multi-user, all-gender restroom. SEA will be only one of a handful of airports with a restroom of this kind. It is open to all people and families with private stalls with light indicators for availability, a urinal room, shared grooming spaces and accessible areas as well. Phase 5 has also been approved and will start construction on updating restrooms on the B, C, and D Concourses.

CHECKPOINT 1 RELOCATION

Project Kicks Off this Summer



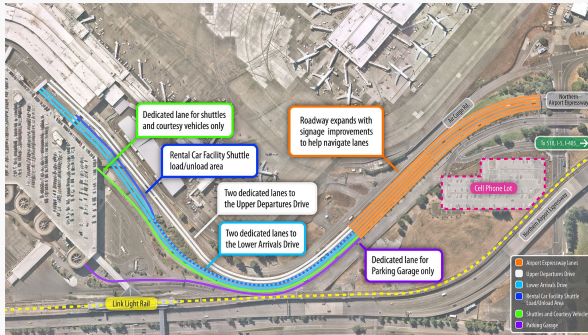
Major renovations are coming to the southern-most end of SEA by Gina Marie Lindsey Hall. Bag Claim 1 will be demolished and removed later this year to make way for a brand-new Security Checkpoint #1. The current checkpoint is located on the Ticketing Level and is available for CLEAR and TSA Pre-Check only. Moving the checkpoint down to the Baggage Claim Level opens it up for more queuing space and will accommodate General Screening as well. A major construction [bid](#) is currently open.

[Read on for more potty talk →](#)

[Find out more about this project →](#)

ROADWAY IMPROVEMENTS

Project Gets Approval... and a New Map



The Roadway Improvements Project recently got approved for construction which is planned to begin later this year. This construction will help alleviate congestion problems and make the airport drives more efficient by dedicating lanes for the Parking Garage and Courtesy Vehicles. By getting commercial vehicles off the roads and into a dedicated lane, it will create a better throughway.

This project is going out to bid in April, visit [VendorConnect](#) to watch for bid opportunities.

[Learn more about the Roadway Improvements →](#)

PORTGEN WORKSHOPS AND EVENTS

Check Out Some Upcoming Event Opportunities



[A&E Prime and Sub Networking](#)

Wed, April 12, 1-3 PM, SEA Airport
For WMBE Architecture and Engineering Firm

[Project First Look with Port Prime Hensel Phelps](#)

Thurs, April 20, 1-4 PM
Emerald Downs, Auburn
Construction subcontracting opportunities

[Job Order Contracts and Small Works Networking](#)

Wed, Apr 26, 2023, 1-3 PM, SEA Airport
For WMBE/DBE firms in construction trades

UPCOMING BID OPPORTUNITIES

- Checkpoint 1 Relocation
- Apartment Sound Insulation Project - Phase 1
- Widen Arrivals Roadway (Roadway Improvements)
- Baggage Optimization - Phase 3
- Telecommunication Infrastructure Enhancement
- Main Terminal Improvements Program
- Main Terminal Improvements Program

- Major Construction 4/4/2023
- Major Construction 4/5/2023
- Major Construction 4/18/2023
- Major Construction 4/18/2023
- Major Construction 5/31/2023
- Design 10/11/2023
- Major Construction 1/16/2024

**all dates are subject to change*

Bid Opportunities

Find Port procurement and contract information at [VendorConnect](#).

[Go to VendorConnect](#)

Learn More About Upcoming Projects

Interested in doing business at SEA Airport? Check out our [Diversity in Contracting](#) webpage. Sign up to join a [PortGen](#) workshop and hear from Port staff, learn about new projects, and network with other business.



Public Art Opportunities

There are seven art opportunities for the SEA Gateway Project currently open:

- Video wall
- Baggage handling system enclosure
- Exterior glass display
- Two suspended light sculptures and two pop-up walls
- Suspended sculpture
- Bridge pop-up wall graphics
- Terrazzo

Click to find our more information about these are opportunities and about the Public Art Program at SEA!



CONTACT US

Have a question or a suggestion?

Email us at SEAcustomer@portseattle.org

Copyright © 2023

All rights reserved

**Port of Seattle
Commission**

Ryan Calkins
Sam Cho
Fred Felleman
Toshiko Hasegawa
Hamdi Mohamed

**Port of Seattle
Executive Director**

Stephen P. Metruck



Seattle-Tacoma
International
Airport

Operated by the Port of Seattle



This email was sent by: Port of Seattle
2711 Alaskan Way, Seattle, WA, 98121 US

[Privacy Policy](#)

[Update Profile](#)

[Manage Subscriptions](#)

[Unsubscribe](#)