

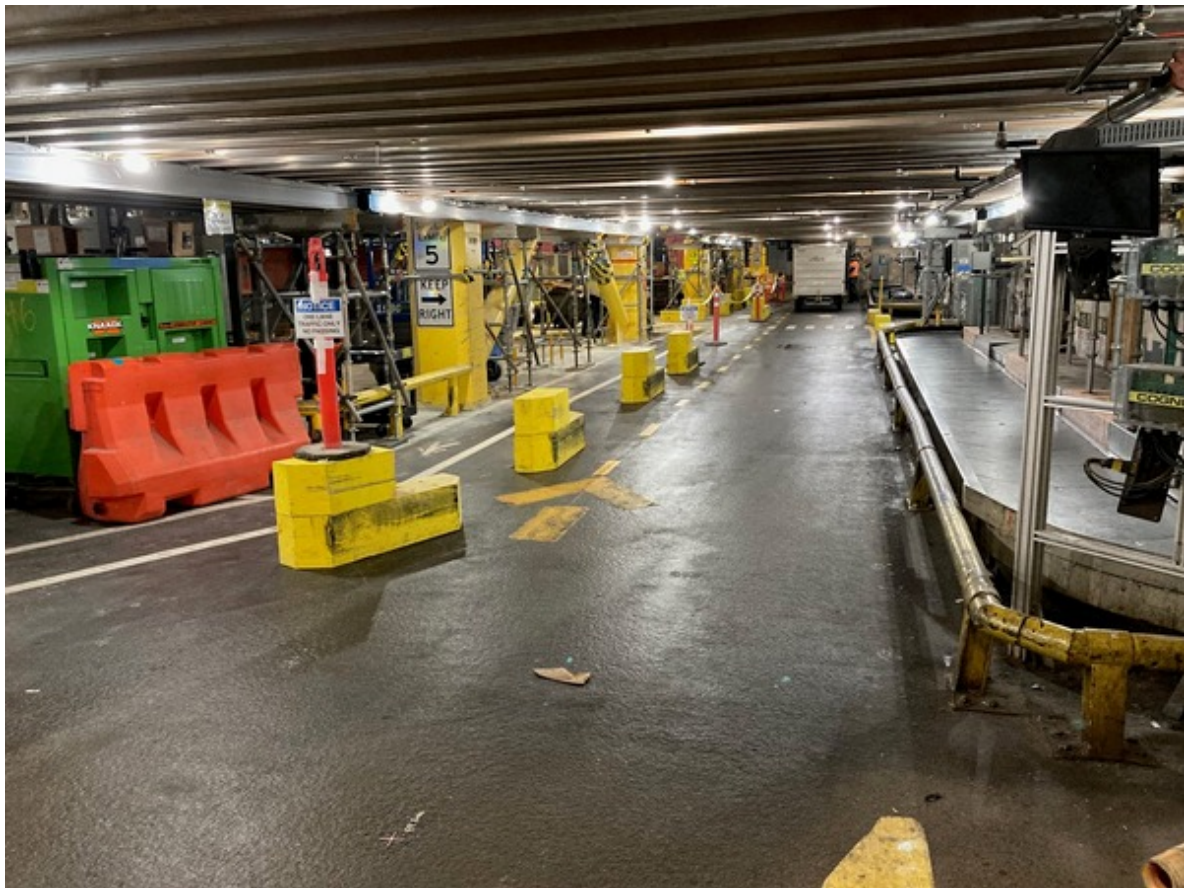
July 24th, 2023

Bagwell Drive Lane Revision

Bag Claim 15/16

Due to changes in the space of the drive lanes from current construction activities in the bagwell at bag claim 15/16, the secondary passing lane has been closed until further notice.

Drivers not delivering bags to bag claim belts 13-16 should exit the bagwell at D1 to prevent congestion and delays.



FOR IMMEDIATE NOTIFICATION, DISTRIBUTION & COMMUNICATION
Please Forward to ALL Airport Staff

CONTACT US

For follow up questions please contact SMS Team at SMSspecialist@portseattle.org