



Port of Seattle Diversity in Contracting PortGen Webinar Project First Look

January 31, 2024



Port of Seattle Diversity in Contracting

Projects

- 2024 Airfield Contracts
MengQi Wu, Capital Program Leader AV Project Management
- Sound Insulation Apartment Program
Stephen St. Louis, Capital Project Manager, AV Project Management

Networking

- Introductions (Company, Industry, Prime or Sub)

Purpose:

Advance equity and address contracting disparities by increasing the utilization of Women and Minority Business Enterprises, and other disadvantaged firms.

Five-year Policy Benchmarks: (this is our 5th year)

- Increase to 15% the amount of spend on WMBE contracts within 5 years (Baseline was 5.3%)
- Triple the number of WMBE firms doing business with the Port (Baseline was 118; Goal is 354)

To be Notified of Project Advertisements

- Register on VendorConnect
- Sign on to Diversity in Contracting mailing list

Once Advertised, First Steps to Pursue a Posted Project

- Reach out to Project Plan holders on VendorConnect
- Become a Plan Holder on VendorConnect
- Attend informational/pre-bid meetings

Welcome to the Port of Seattle VendorConnect

Important! Port Contractor/Consultant Vaccine Requirement

Due to the everchanging COVID-19 situation and the healthcare professional and state guidance provided, all public gatherings, such as pre-bid meetings and bid openings will be held virtually. This information will be provided in more detail as it applies to the particular requirement and interested vendors should monitor VendorConnect closely for changes.

Port of Seattle VendorConnect provides procurement and contract information for construction, consulting, and goods and services. This is also the one stop location for registering to be on the following rosters: small works (construction less than \$300,000), consulting services, and goods and services.

To begin, you must register yourself and then find or add your business. If you were in our old system, and this is your first time logging in you must recreate your login account. To do this, click the "REGISTER/LOGIN" button below, then the "Sign up now" link on the login screen.

To begin, you must register yourself and then find or add your business. If you were in our old system, and this is your first time logging in you must recreate your login account. To do this, click the "REGISTER/LOGIN" button below, then the "Sign up now" link on the login screen.

[REGISTER/LOGIN](#)

You may search our solicitations, vendors, and view the event calendar as a guest.

[CURRENT AND PAST SOLICITATIONS](#)

[FUTURE SOLICITATIONS](#)

[SEARCH PUBLICLY VIEWABLE VENDORS](#)

[VIEW EVENT CALENDAR](#)

DASHBOARD > VENDOR INDEX

Vendor Index

List of publicly viewable vendors. Use the filter for more detailed searches. You must login to add your vendor to our system.

SHOW FILTER

EXPORT TO EXCEL

Name ↑	Work Types	Business Certifications (*self-identified)	NAICS
Diving Blerit Marine LLC	Environmental, Finishes (flooring, painting), Shoreline, Marine Construction, Electrical, Finishes - Painting, Mechanical, HVAC, Plumbing, Services-Coffee Break Supplies & Services, Community Investment		
1 Alliance Geomatics LLC		DBE, MBE, SCS, SBE	541370 - Surveying and Mapping (except Geophysical) Services
1 Industrial Source LLC		DBE, SCS, SBE*, WBE	423320 - Brick, Stone, and Related Construction Material Merchant Wholesalers, 423610 - Electrical Apparatus and Equipment, Wiring Supplies, and Related Equipment Merchant Wholesalers, 444190 - Other Building Material Dealers
1029 consulting, inc.		SBE*, WBE*	541611 - Administrative Management and General Management Consulting Services, 541612 - Human Resources Consulting Services, 541614 - Process, Physical Distribution, and Logistics Consulting Services, 541618 - Other Management Consulting Services, 561499 - All Other

Date	Event/Training Name	Format
February 28	PortGen First Look: Construction	Online
March 4	PortGen Connections: Post International Arrivals Facility (IAF) Realignment with Hoffman Construction	In-Person
March 14	Alliance Northwest	In-Person
TBD April	Aviation Maintenance	In-Person

2024 Airfield Contracts

Mengqi Wu,
Capital Program Leader
AV Project Management Group
wu.m@portseattle.org

2024 Airfield Projects - Contract 2 Overview

Scope & Objectives:

- Converts Gate N14 to be used for Wide-Body (WB) aircraft operations. Scope includes apron pavement, lighting, PCAir, 400 Hz, SafeDock, striping and fuel systems;
- Add a starboard fuel hydrant pit (FHP) and associated infrastructure improvements at Gate N16 to provide necessary gate scheduling flexibility during planned construction projects;
- Selective Concrete Panel Replacements along the N. Concourse Taxilane, Taxiway B, Taxiway C, Taxilane W with High Early Strength Concrete;
- Concourse A channel drain replacement; N. Concourse channel drain and fire hydrant replacement.



Estimated Cost Range: \$8M-\$12M

Anticipated WMBE Percentage Range: 8% - 12%

2024 Airfield Projects - Contract 3 Overview

Scope & Objectives:

- Automate three Airport Operations Area (AOA) perimeter vehicle access gates and install access control system, cameras and lighting;
- Replace three 7' gates with 12' gates and upgrade some outdated equipment at the gates;
- Replace perimeter fence and signage to comply with Port standards;
- Install razor wire on existing perimeter fence along the north and east AOA perimeter;
- Install access control system to two AOA perimeter gates so that personnel accessing the AOA area can be identified.



Estimated Cost Range: \$1.5M - \$3M

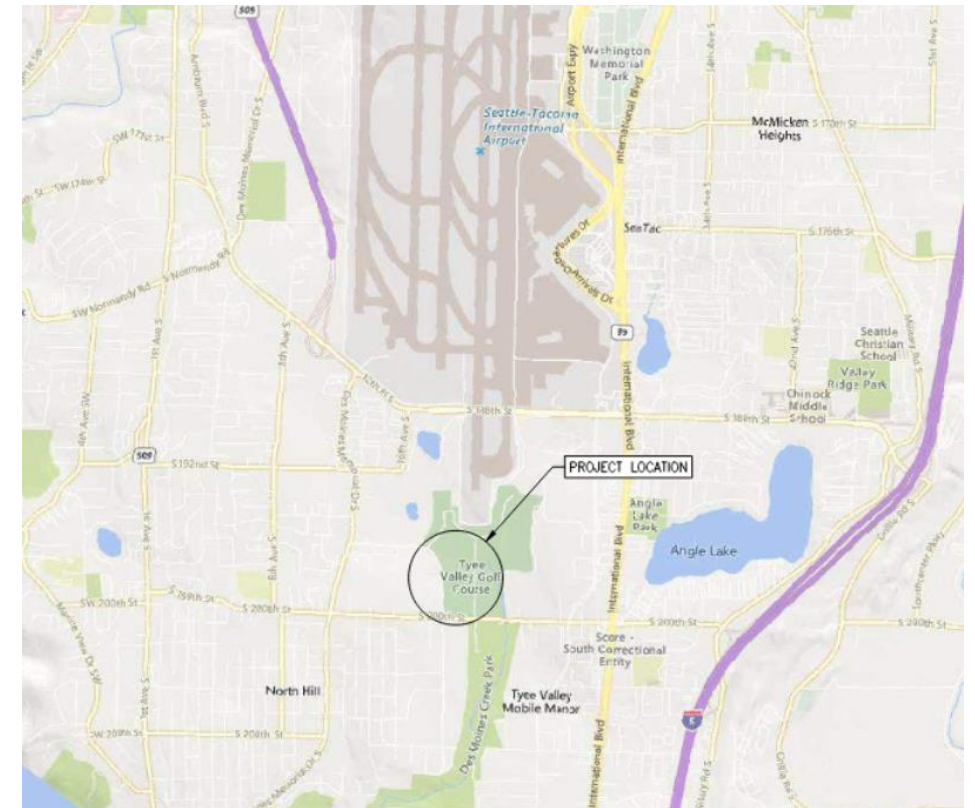
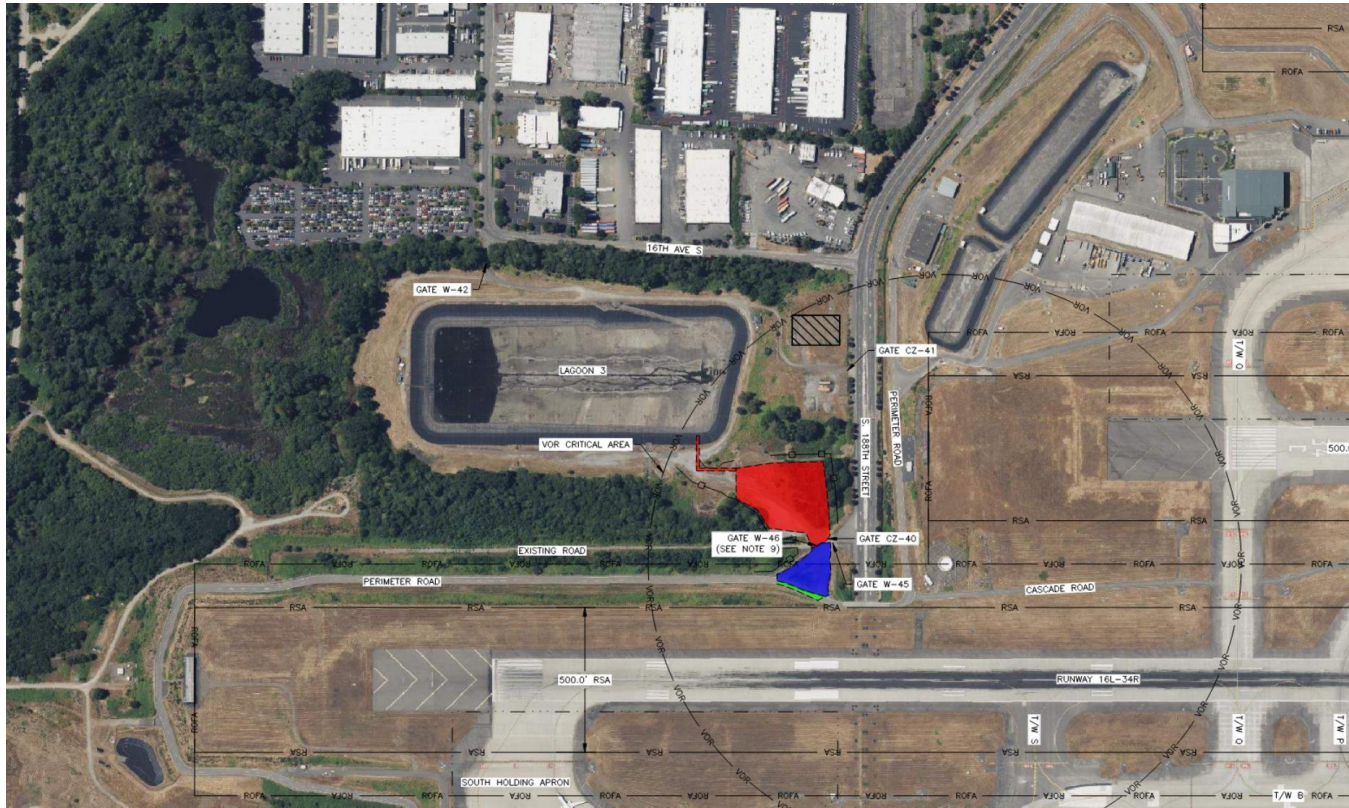


Anticipated WMBE Percentage Range: 10% - 15%

2024 Airfield Projects - Contract 4 Overview

Scope & Objectives:

- Construct a new snow storage area near Lagoon 3 pond to allow a larger volume of snow to be placed directly in the designated storage area and meet the regulatory need for connection of snow storage area to the Industrial Waste System (IWS);
- Wetland mitigation at Tye Golf Course area.



Estimated Cost Range: \$12M-\$20M

Anticipated WMBE Percentage: TBD

Components/Trades of Interest

Concrete and Earthwork

- Cement Mason
- Equipment Operators
- Trucking
- Traffic Control and Flagging

Site Utilities

- Pipefitters
- Electricians

Other Crafts

- Iron Workers
- Laborer
- Painter/Stripers
- Communication and Access Control
- Fencing



2024 Airfield Contracts Schedule

Item	Anticipated Schedule		
	Contract 2	Contract 3	Contract 4
Commission Authorization for Construction	Q1 2024	Q4 2023	Q2 2024
Advertisement Period begins	Q2 2024	Q3 2024	Q3 2024
Construction begins	Q3 2024	Q4 2024	Q4 2024
Substantial Completion	Q1 2025	Q1 2025	Q4 2025

Sound Insulation Apartment Program - Phase 2 Construction

Stephen St. Louis | Capital Project Manager, Aviation Project Management Group

Project Objectives & Overview

Project Objective:

As part of the Port of Seattle's (Port) long-term commitment to communities surrounding the airport, the Port offers sound insulation for eligible properties within the current Federal Aviation Administration (FAA) approved noise remedy boundary.

- Commission adopted Motion 2020-04 to accelerate and complete by the end of 2026

Project Overview:

The Sound Insulation Program exists to help reduce community noise impacts caused by aircraft utilizing the Airport. As part of its long-term commitment to communities surrounding the Airport, the Port offers sound insulation for eligible properties within the current Federal Aviation Administration (FAA) Airport Noise Compatibility (Part 150) noise remedy boundary.

Estimated Cost Range: \$10m - \$15m

Anticipated DBE Percentage: 7%

Scope

Construction work includes installation of new Sound Transmission Class (STC) rated windows, doors, and storm doors, as well as supplemental ventilation to meet the FAA standard of 45 decibel (dB) Day-Night Average Sound Level (DNL) interior noise that can be achievable with at least a 5 dB reduction.

Scope Items:

- Sound Transmission Class (STC) rated windows
- STC rated solid core doors
- Storm Doors
- Positive Air Ventilation
- Ancillary work necessary to reduce noise and meet code



Scope

Example before and after photos from the single-family home program:

Before window replacement



After window replacement



Components of Interest

Construction Trades

- Carpentry/Window Install
- Glass and Glazing
- Electrical
- Mechanical
- Drywall
- Paint
- Abatement
- Roofing
- Siding

Project Schedule

Sound Insulation Apartment Program – Phase 2 Construction:

- Phase 2 consists of 9 apartment complex properties with 320 units
- Design on-going through Q1 – 2024
- Construction advertisement targeting Q1 – 2024
- Begin Construction Q3 - 2024



Questions?

NETWORKING

Your Name

Business Name

Industry

Business Certifications

Prime or Sub

E-mail address