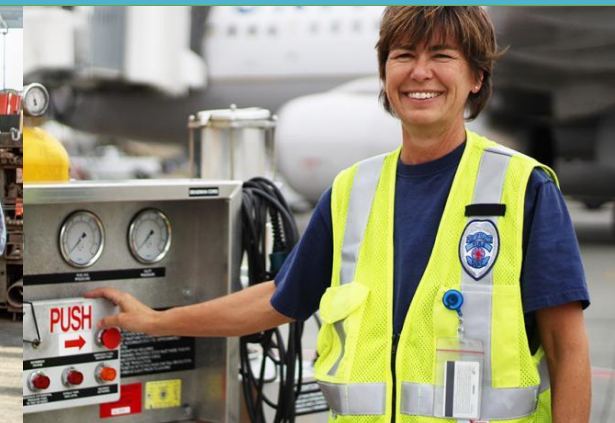




Port of Seattle Diversity in Contracting PortGen Webinar Project First Look

April 24, 2024



Port of Seattle Diversity in Contracting

Projects

- Water Tower Reservoir Rehab Project
- Baggage System Security Upgrade. Keys for Card Readers.
- Landside Pavement Program

Networking

- Introductions (Company, Industry, Prime or Sub)

Purpose:

Advance equity and address contracting disparities by increasing the utilization of Women and Minority Business Enterprises, and other disadvantaged firms.

Five-year Policy Benchmarks:

- Increase to 15% the amount of spend on WMBE contracts within 5 years (Baseline was 5.3%)
- Triple the number of WMBE firms doing business with the Port (Baseline was 118; Goal is 354)

To be Notified of Project Advertisements

- Register on VendorConnect
- Sign on to Diversity in Contracting mailing list

Once Advertised, First Steps to Pursue a Posted Project

- Reach out to Project Plan holders on VendorConnect
- Become a Plan Holder on VendorConnect
- Attend informational/pre-bid meetings

Welcome to the Port of Seattle VendorConnect

Important! Port Contractor/Consultant Vaccine Requirement

Due to the everchanging COVID-19 situation and the healthcare professional and state guidance provided, all public gatherings, such as pre-bid meetings and bid openings will be held virtually. This information will be provided in more detail as it applies to the particular requirement and interested vendors should monitor VendorConnect closely for changes.

Port of Seattle VendorConnect provides procurement and contract information for construction, consulting, and goods and services. This is also the one stop location for registering to be on the following rosters: small works (construction less than \$300,000), consulting services, and goods and services.

To begin, you must register yourself and then find or add your business. If you were in our old system, and this is your first time logging in, you must recreate your login account. To do this, click the "REGISTER/LOGIN" button below, then the "Sign up now" link on the login screen.

To begin, you must register yourself and then find or add your business. If you were in our old system, and this is your first time logging in, you must recreate your login account. To do this, click the "REGISTER/LOGIN" button below, then the "Sign up now" link on the login screen.

[REGISTER/LOGIN](#)

You may search our solicitations, vendors, and view the event calendar as a guest.

[CURRENT AND PAST SOLICITATIONS](#)[FUTURE SOLICITATIONS](#)[SEARCH PUBLICLY VIEWABLE VENDORS](#)[VIEW EVENT CALENDAR](#)

Vendor Index

List of publicly viewable vendors. Use the filter for more detailed searches. You must login to add your vendor to our system.

SHOW FILTER **EXPORT TO EXCEL**

Name ↑	Work Types	Business Certifications (*self-identified)	NAICS
Diving Blerit Marine LLC	Environmental, Finishes (flooring, painting), Shoreline, Marine Construction, Electrical, Finishes - Painting, Mechanical, HVAC, Plumbing, Services-Coffee Break Supplies & Services, Community Investment		
1 Alliance Geomatics LLC		DBE, MBE, SCS, SBE	541370 - Surveying and Mapping (except Geophysical) Services
1 Industrial Source LLC		DBE, SCS, SBE*, WBE	423320 - Brick, Stone, and Related Construction Material Merchant Wholesalers, 423610 - Electrical Apparatus and Equipment, Wiring Supplies, and Related Equipment Merchant Wholesalers, 444190 - Other Building Material Dealers
1029 consulting, inc.		SBE*, WBE*	541611 - Administrative Management and General Management Consulting Services, 541612 - Human Resources Consulting Services, 541614 - Process, Physical Distribution, and Logistics Consulting Services, 541618 - Other Management Consulting Services, 561499 - All Other

Upcoming PortGen Events

PortGen Type	Event	Date
Connects	Turner Construction: C Concourse Expansion	June 4
Connects	Aviation Industry Day	June 11
First Look	Webinar	July 31
Connects	Aviation Maintenance Supplies and Small Works	Mid-September
Connects	Maritime Industry Day	Fall 2024
Training Series	Advanced PortGen	Fall 2024
Mentorship Program	Accelerator	Fall 2024

Project Name	Contract Type	Cost Estimate	WMBE Goal	Advertise Date	Presenter
Water Tower Reservoir Rehabilitation Project	Construction	\$1.4 M	7% WMBE Goal	June 2024	Kellie Jaenicke
Baggage System Security Upgrade- Keys for Card Readers	Construction	\$1.5 M - \$2.6 M	8%-12% Anticipated Goal	Q3 2024	Alex Gaitho
Landside Pavement Project	Construction	\$3M - \$5M	10-15% Anticipated Goal	December 2024	Ray Moreno

Water Reservoir Rehabilitation

Kellie Jaenicke

Capital Project Manager

AV Project Management Group

Jaenicke.k@portseattle.org

Project Overview

Project Purpose: Rehabilitate the structure to extend its useful life

Project Background:

- 2-million-gallon steel reservoir built in the year 2000
- Previous dive inspections showed significant amounts of corrosion on multiple surfaces that needs to be addressed. Draining the tank also provides an opportunity to add new equipment or replace equipment deemed past its useful life.

Estimated Cost: \$1,400,000

WMBE Goal Percentage: 7%

Project Scope

- Complete replacement of interior coatings
- Partial replacement of exterior coatings
- Column base plate modifications
- Cathodic protection system improvements
- Rebuild interior and exterior access ladders to meet safety codes
- Installation of davit post sleeve on tank roof
- Replace weathered tank hardware including nuts, bolts, cables, and pulleys
- Install tank sampling ports
- Valve vault improvements and repairs
- Installation of sump pump in valve vault

Existing Conditions



Significant rust on interior tank surfaces



Bubbling/failing of interior coating

Existing Conditions



Significant rust on interior tank surfaces

Existing Conditions



Cap Vent
Moderate rust needs removal



Telemetry boxes
Deteriorated coating

Existing Conditions



Access Manway

Rusted nuts & bolts need replacement



Outlet Pipe

Deteriorating coating, rusted nuts & bolts

Future State

- Renewed asset with expected useful life of 20 years
- Improved safety
- Reduced corrosion risk

Components / Trades of Interest

- Specialty coating application
- Structural welding for column base plates
- Trenching & paving for new sump pump
- Electrical power for vault improvements

Project Schedule

Item	Anticipated Date
Advertisement Period Begins	June 2024
Construction Begins (NTP)	September 2024
Substantial Completion	September 2025
Physical Completion	December 2025

Baggage System Security Upgrade – Keys for Card Readers

Imran Farhat,
Capital Project Manager
AV Project Management Group
Farhat.i@portseattle.org

Project Overview

Project Purpose:

Convert keyed access baggage conveyor belt doors to automatic access controls and add cameras and replace one manual door to an automatic roll-up fire shutter.

Project Background:

Increase airport security at baggage induction points that do not currently have access control system biometric readers.

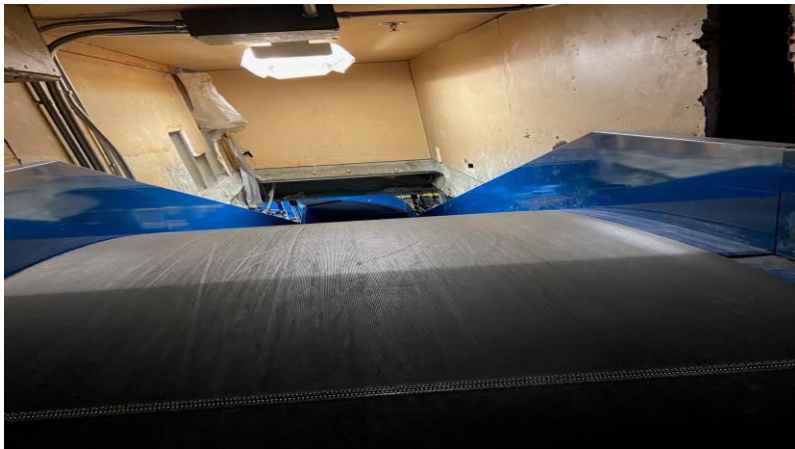
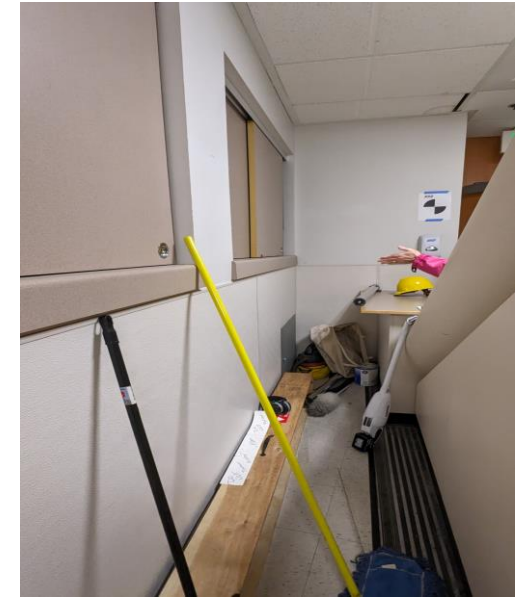
Estimated Cost Range: \$ 1,500,000 - \$ 2,600,000

Anticipated WMBE Percentage: 8% - 12%

Project Scope

- Install (9) New Cameras
- Install (7) New Biometric Readers with Intercom and Horn/Strobe
- Install New Fire Rated Automatic Roll-Up Fire Shutter with Controls
- Repair Doghouse Interior to Maintain Fire Rating
- Replace Baggage Conveyor Motor
- Modify Existing Baggage Conveyor to Fit Fire Shutter
- Extend Width and Height of Doghouse to Accommodate Maintenance Clearances at Baggage Conveyor
- Relocate Light, Junction Boxes and Conduit inside Doghouse
- Install New Rated Access Panel

Current State Pictures






Current State Pictures



Future State Floor Plan



LEGEND

-  New Fixed Camera
-  New Biometric Reader, Intercom and Horn/Strobe
-  New Rated Fire Shutter

Components / Trades of Interest

- Communications / Security
- Electrical
- Baggage Handling
- Cold-Formed Metal Framing
- Finishes

Project Schedule

Item	Anticipated Date
Advertisement Date	Q3 2024
Construction Contract Execution	Q4 2024
Construction Period	Q1-Q2 2025
Substantial Completion	Q3 2025

Landside Pavement Project

Ray Moreno P.E.,
Capital Project Manager
AV Project Management Group
Moreno.R@portseattle.org

Project Overview

Project Purpose:

The Landside Pavement Program will rehabilitate SEA landside pavements to maximize the useful life of assets and ensure operations.

Project Background:

SEA has 2.5 million square feet of Landside pavement; this initial project is beginning of program to maintain a minimum pavement condition throughout the SEA roadway network.

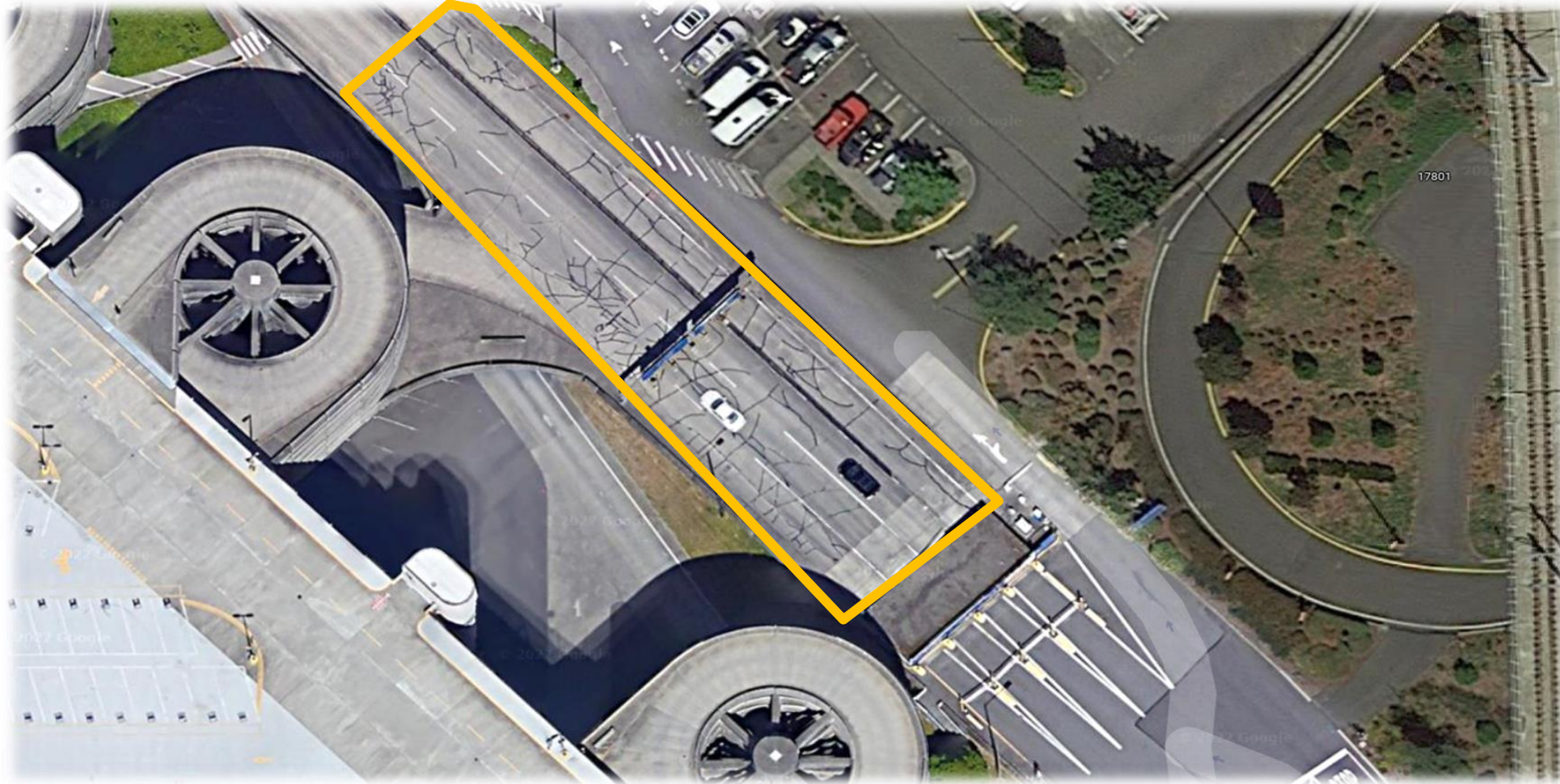
Estimated Cost Range: \$3 Million – \$5 Million

Anticipated WMBE Percentage: 10 -15%

Project Scope

- Pavement Rehabilitation:
 - Mill and Overlay
 - Full Replacement
- Structural Reinforcing of Retaining Wall
- Removal of Sign Structures and abandoned utilities
- Signage and Illumination Upgrade
- Improvements to related surface water drainage facilities

Current State Pictures



South Access SEA Parking Garage

Components / Trades of Interest

- Sign and Sign Bridge Structure Demo and Replacement
 - Laborers
- Retaining Wall Seismic Upgrades
 - Laborers / Carpenters / Masons / Finishers
- Paving: Concrete and Asphalt
 - Laborers / Carpenters / Masons / Finishers
- Electrical and Communication improvements
 - Electricians / Comm. Technicians

Project Schedule

Item	Anticipated Date
Advertise	December 2024
Bid Opening	January 2025
Notice to Proceed	Q2 2025
Substantial Completion	Q4 2025

Questions?

To be Notified of Project Advertisements

- Register on VendorConnect
- Sign on to Diversity in Contracting mailing list

Once Advertised, First Steps to Pursue a Posted Project

- Reach out to Project Plan holders on VendorConnect
- Become a Plan Holder on VendorConnect
- Attend informational/pre-bid meetings

NETWORKING

Your Name

Business Name

Industry

Business Certifications

Prime or Sub

E-mail address