

# Highline Forum



**SEPTEMBER 25, 2024**  
**CITY OF DES MOINES**

Matt Mahoney  
Councilmember, Des Moines

# Destination Community



- Dynamic, destination community
- Arts, recreation, safe place to live, work, play
- Value to the greater community



# City of Des Moines – A New Chapter



## A New City Manager

- A new chapter is unfolding for the City of Des Moines. The city, known for its vibrant parks and views, its close-knit and protective community, and its steadfast City team, had recently selected a new City Manager, Katherine Caffrey.
- With a reputation for visionary leadership and an impressive track record in municipal management, Katherine is ready to steer the city towards new heights.

*The city council and residents alike are hopeful this fresh perspective and strategic approach will elevate the city's progress.*



# Welcome Police Chief Ted Boe



*Mission: Make Des Moines a Safe Place to Live, Work and Play*  
*How we do it: Fight Crime, Build Trust and Support Our People*

## EXPERIENCE

24 years police experience  
Patrol Officer, Master Police Officer  
Field Training Officer  
Patrol and Administrative Sergeant  
Operations Captain  
Major Crimes Section Captain  
6 years Burien Chief

## BACKGROUND

Undergrad- Business Administration at UW  
Grad- Homeland Security Masters at Naval Postgraduate  
FBI National Academy Graduate

## Program Development

Shop with a Cop- Burien White Center Rotary  
Building Resilience and Violence Education (BRAVE)  
Burien Law Enforcement Assisted Diversion (B-LEAD)  
Right Response (Police, Fire and MHP co-response)  
Co-Chair Leadership, Intervention and Change (LINC) Experience



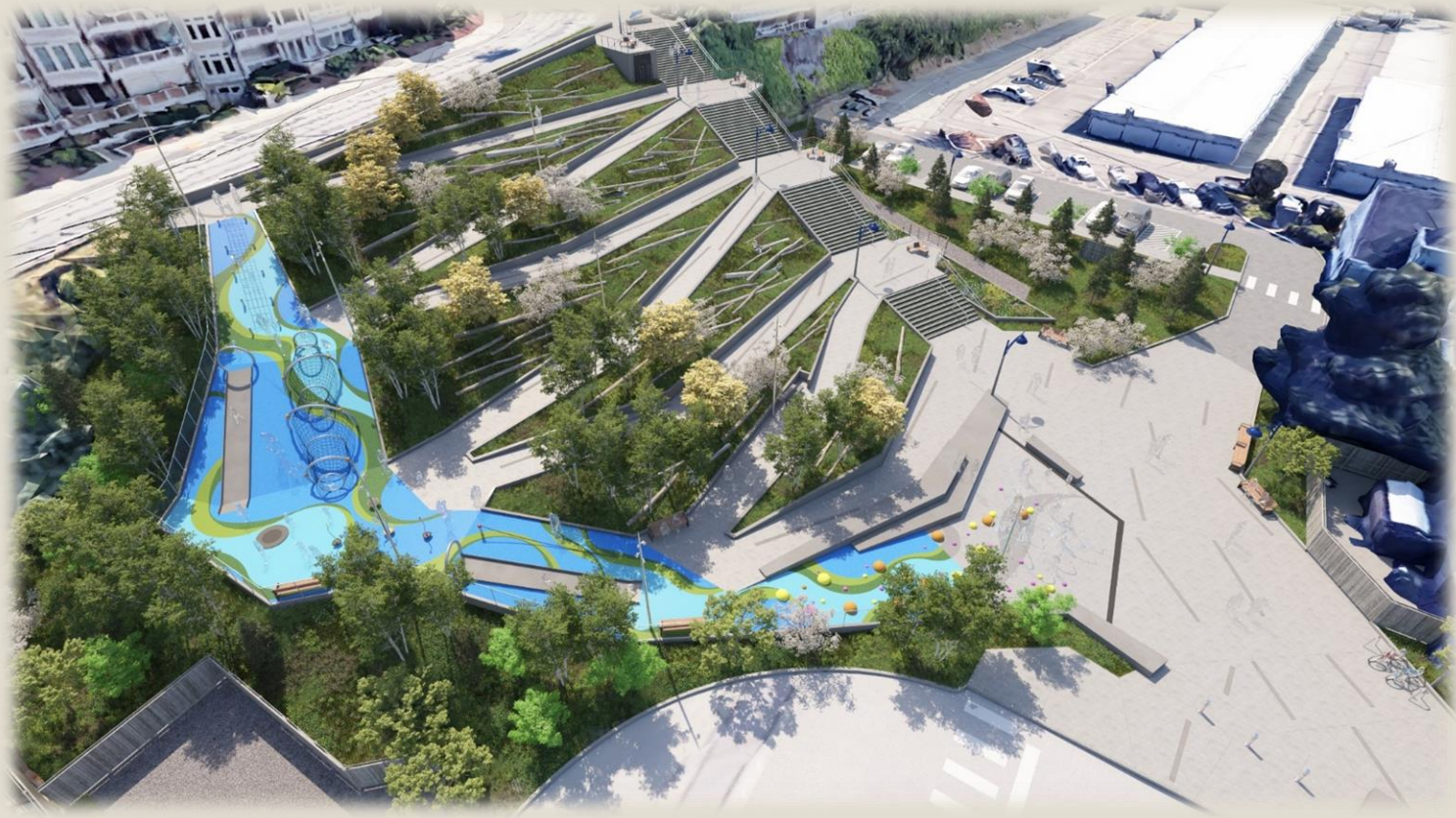
# Marina Steps + Green Street



- **Place making** – Acknowledging the need for pedestrian connectivity between Downtown to the Marina, the Des Moines Marina Steps Project, as part of the holistic Marina Development Project, will focus on enhancing the pedestrian experience for residents and visitors, creating a distinctive connection between Des Moines' Downtown and the Marina.
- **Environmental stewardship** – The project seeks to celebrate stormwater and improve water quality through visible landscape expression. Through a series of bioretention cells, the steps will clean stormwater before it arrives in the Puget Sound. Additionally, the landscaping draws inspiration and reference to iconic Pacific Northwest beachscapes, hillsides, and forests. Natural materials and native plants will be incorporated into the design to create a new city landscape that pays homage to its location.
- **Gathering place for the greater community/region** – The project creates a vital pedestrian connection and public view corridor from the downtown core to the marina floor. Through a park like setting which embraces Pacific Northwest culture and environment, a central strain connects 223<sup>rd</sup> Street to the waterfront, flanked by accessible walkways, places to pause and enjoy the view, and a central plaza for seasonal events and everyday use. The steps set the stage for future economic development through this physical connection to the Marina with quality public open spaces, celebrating the movement of water and people to form a new, energized heart of the Marina District.



# Marina Steps + Green Street



# Marina Steps + Green Street





# Business Park



## New Business Park

Over the last 15 years, the City has been implementing the vision for the Des Moines Creek Business Park to bring new economic activity, jobs and environmental reclamation to the long vacant parcels owned by the Port of Seattle. This work has included Comprehensive Plan amendments, zoning code updates, development agreements as well as extensive transportation and infrastructure improvements to accommodate the needs of various commercial and industrial businesses that were targeted for a future business park.

The latest section, the Des Moines Creek West phase, adds to this decade plus effort and when completed, will include the ability to support an estimated 600+ full-time jobs, sustainable design elements that protect local wetlands, improve the regional trail system, and replace impacted trees by a minimum 3 for 1 ratio. Panattoni Development Company, who was responsible for developing the majority of the existing business park, is also developing this site.



# DES MOINES CREEK WEST

## PANATTONI DEVELOPMENT



WETLAND RESTORATION PROJECT:  
AFTER 2 YEARS OF GROWTH



STREAM Y: THE MAIN CHANNEL AND  
SURROUNDING BUFFER, OVERGROWN WITH  
ENGLISH IVY AND HIMALAYAN BLACKBERRY.



### PLAN LEGEND

- PROPERTY LINE
- STREAM CENTERLINE
- RETAINED WETLAND \*
- WETLAND CREATION \*
- PROPOSED BUFFER \*
- POST-CONSTRUCTION BUFFER / SPLIT RAIL FENCE
- ADDITIONAL VEGETATED AREAS

\* ALL WETLANDS, STREAMS, AND THEIR BUFFERS TO BE FULLY RESTORED OR ENHANCED THROUGH THE REMOVAL OF INVASIVE SPECIES AND BEFORE PLANTING WITH NATIVE TREES AND SHRUBS.

- ⊙ DEAD, DYING, & HAZARD TREES
- STREAM IMPACTS
- WETLAND IMPACTS

\*\* 41% OF THE IMPACTED WETLAND AREAS WILL BE RESTORED AS FORESTED BUFFER.



WETLAND D: INCLUDING PORTIONS TO BE  
FILLED ARE A DENSE CARPET OF ENGLISH IVY  
AND HIMALAYAN BLACKBERRY.



WETLAND C: INCLUDING PORTIONS TO BE  
FILLED ARE COMPLETELY OVERGROWN WITH  
HIMALAYAN BLACKBERRY, CHOKING OUT  
NATIVE VEGETATION.



WETLAND A: OVERTAKEN BY INVASIVE IRIS  
PSEUDOACORUS & HIMALAYAN BLACKBERRY.

# In Closing





