



Seattle-Tacoma
International
Airport

Overview Flight Go-Arounds

Presenters: Paris Edwards, Port of Seattle

Vince Mestre, Consultant

Flight Go-Arounds: What is it?

Go-arounds are part of normal aviation practice and are a basic tool for pilots and controllers to ensure safety is not compromised during approach and landing.

Scenarios when a go around may be initiated:

- A go-around may be requested by the pilot or tower initiated by FAA Air Traffic Control
- Typically initiated if a pilot or FAA air traffic controller is not satisfied that the requirements for a safe landing.
- Unstable approach due to many factors, including adverse weather conditions
- Loss of separation on final approach

Flight Go-Arounds: SEA and Other Airports

FAA Air Traffic by Numbers Report (data collected from FY 17-19, FY23)*:

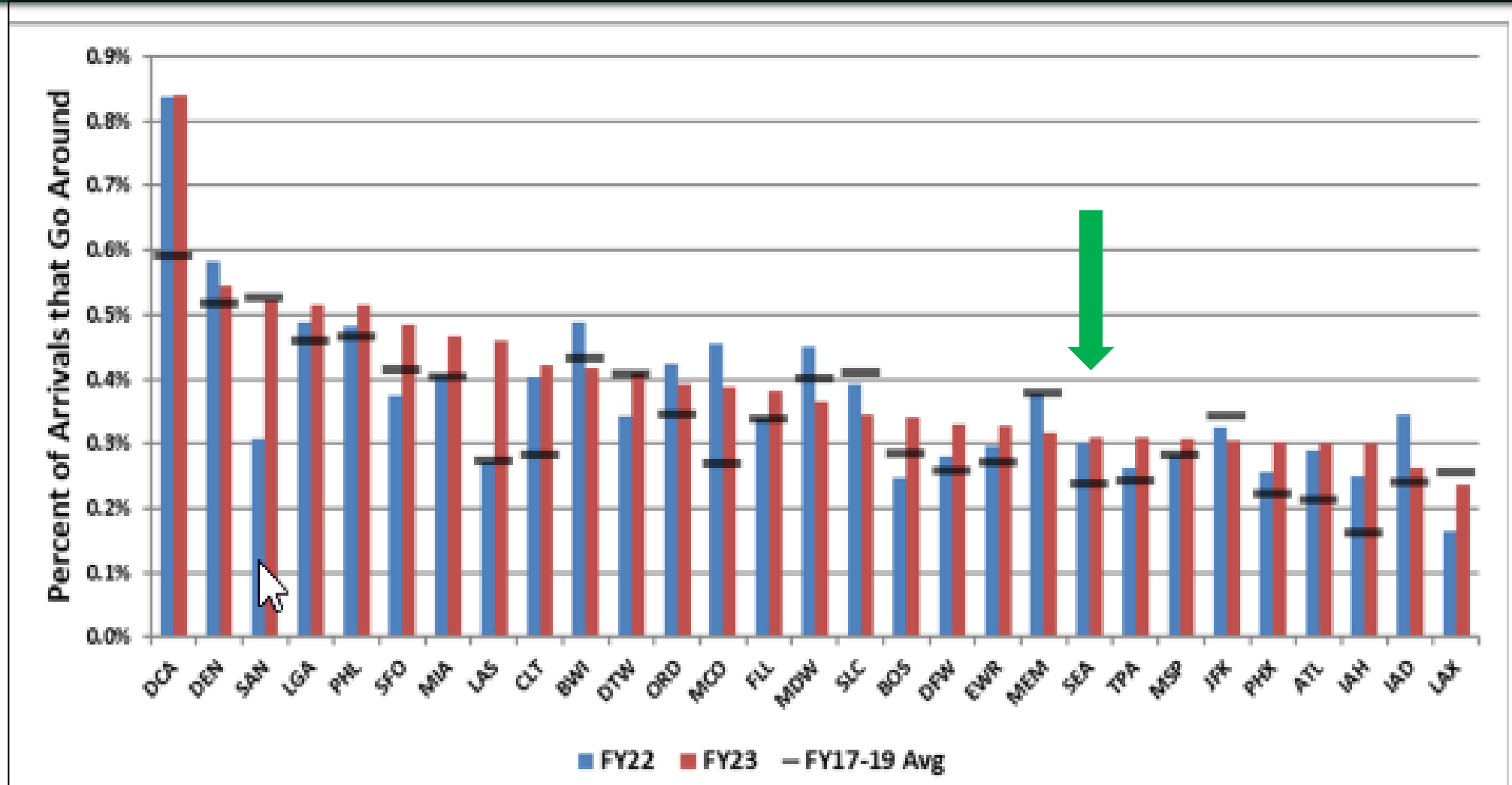
-Annual average: **0.39%** of all aircraft arrivals

SEA (data collected by Noise Office from 2017 – 2024 thru Sep)

-Annual average: **0.4%** of all aircraft arrivals

*FAA data is collected from 30 core US airports, FAA Air Traffic by the Numbers May 2024

Flight Go-Arounds: SEA and Other Airports



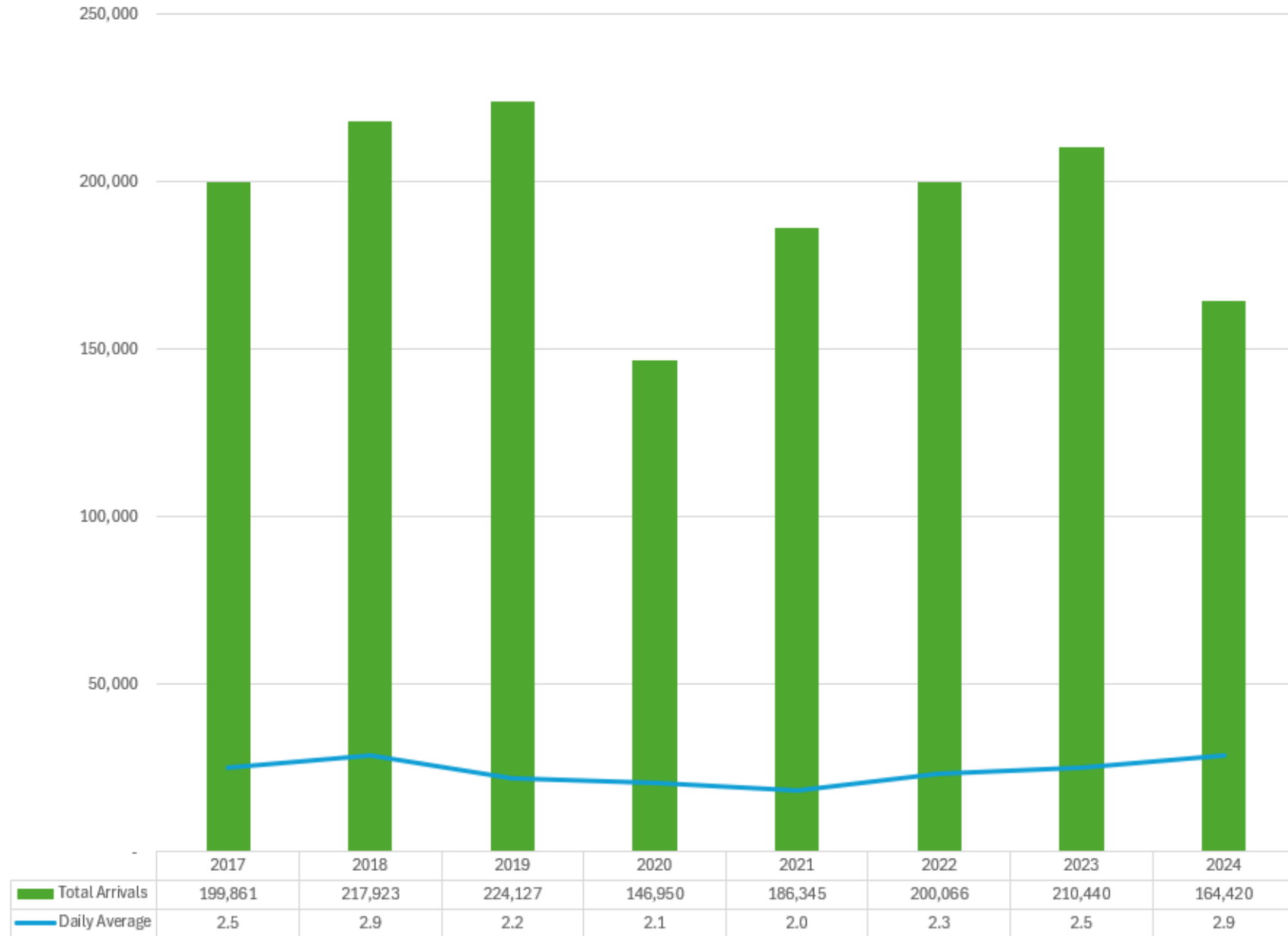
Flight Go-Arounds: SEA and Other Airports

Airport	FY17-19		
	Avg	FY22	FY23
ATL	0.2%	0.3%	0.3%
BOS	0.3%	0.2%	0.3%
BWI	0.4%	0.5%	0.4%
CLT	0.3%	0.4%	0.4%
DCA	0.6%	0.8%	0.8%
DEN	0.5%	0.6%	0.5%
DFW	0.3%	0.3%	0.3%
DTW	0.4%	0.3%	0.4%
EWR	0.3%	0.3%	0.3%
FLL	0.3%	0.3%	0.4%
IAD	0.2%	0.3%	0.3%
IAH	0.2%	0.2%	0.3%
JFK	0.3%	0.3%	0.3%
LAS	0.3%	0.3%	0.5%
LAX	0.3%	0.2%	0.2%

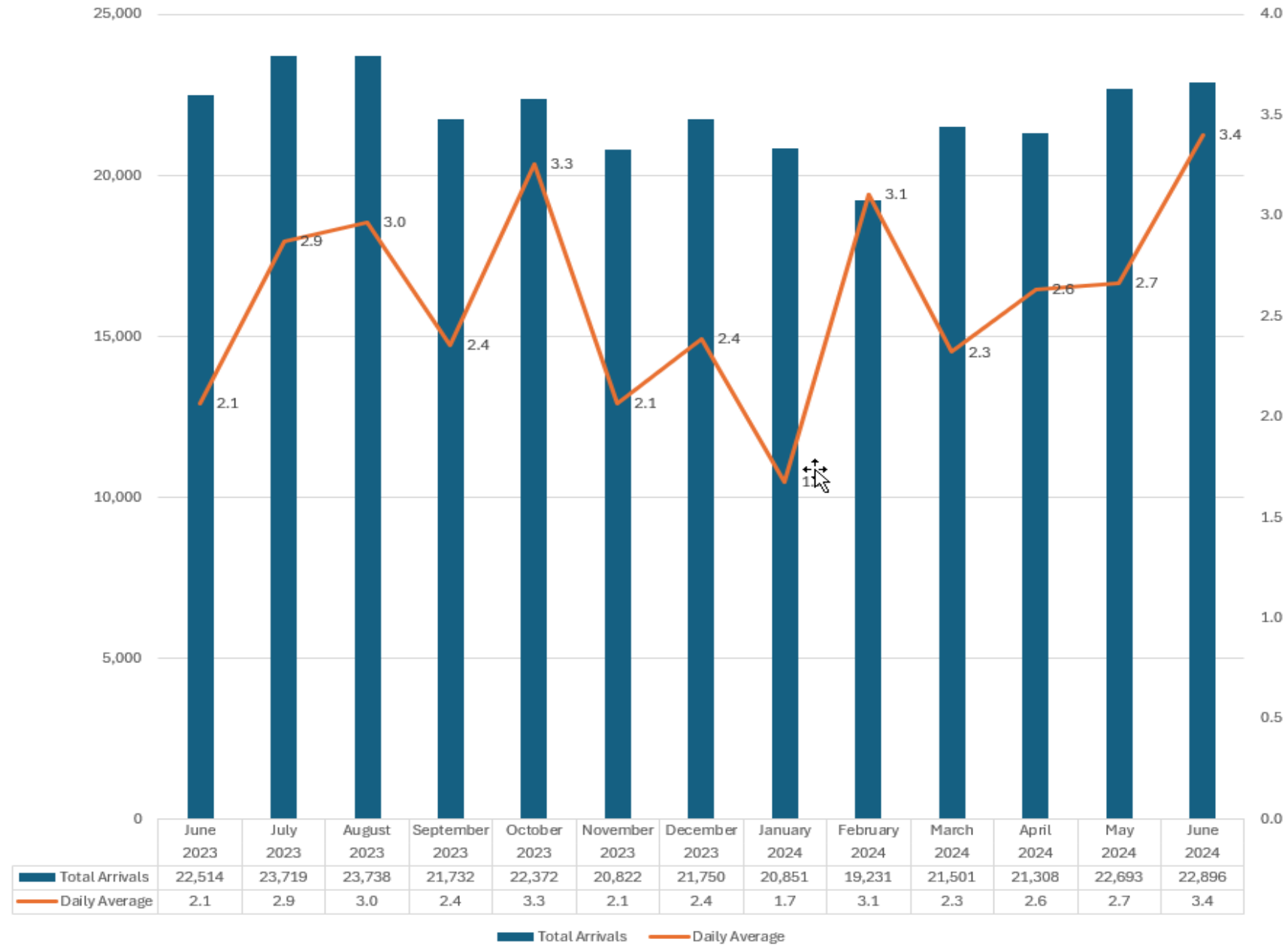
Airport	FY17-19		
	Avg	FY22	FY23
LGA	0.5%	0.5%	0.5%
MCO	0.3%	0.5%	0.4%
MDW	0.4%	0.5%	0.4%
MEM	0.4%	0.4%	0.3%
MIA	0.4%	0.4%	0.5%
MSP	0.3%	0.3%	0.3%
ORD	0.3%	0.4%	0.4%
PHL	0.5%	0.5%	0.5%
PHX	0.2%	0.3%	0.3%
SAN	0.5%	0.3%	0.5%
SEA	0.2%	0.3%	0.3%
SFO	0.4%	0.4%	0.5%
SLC	0.4%	0.4%	0.3%
TPA	0.2%	0.3%	0.3%

SEA Go-Arounds 2017-2024

SEA Daily Average 2017 - 2024

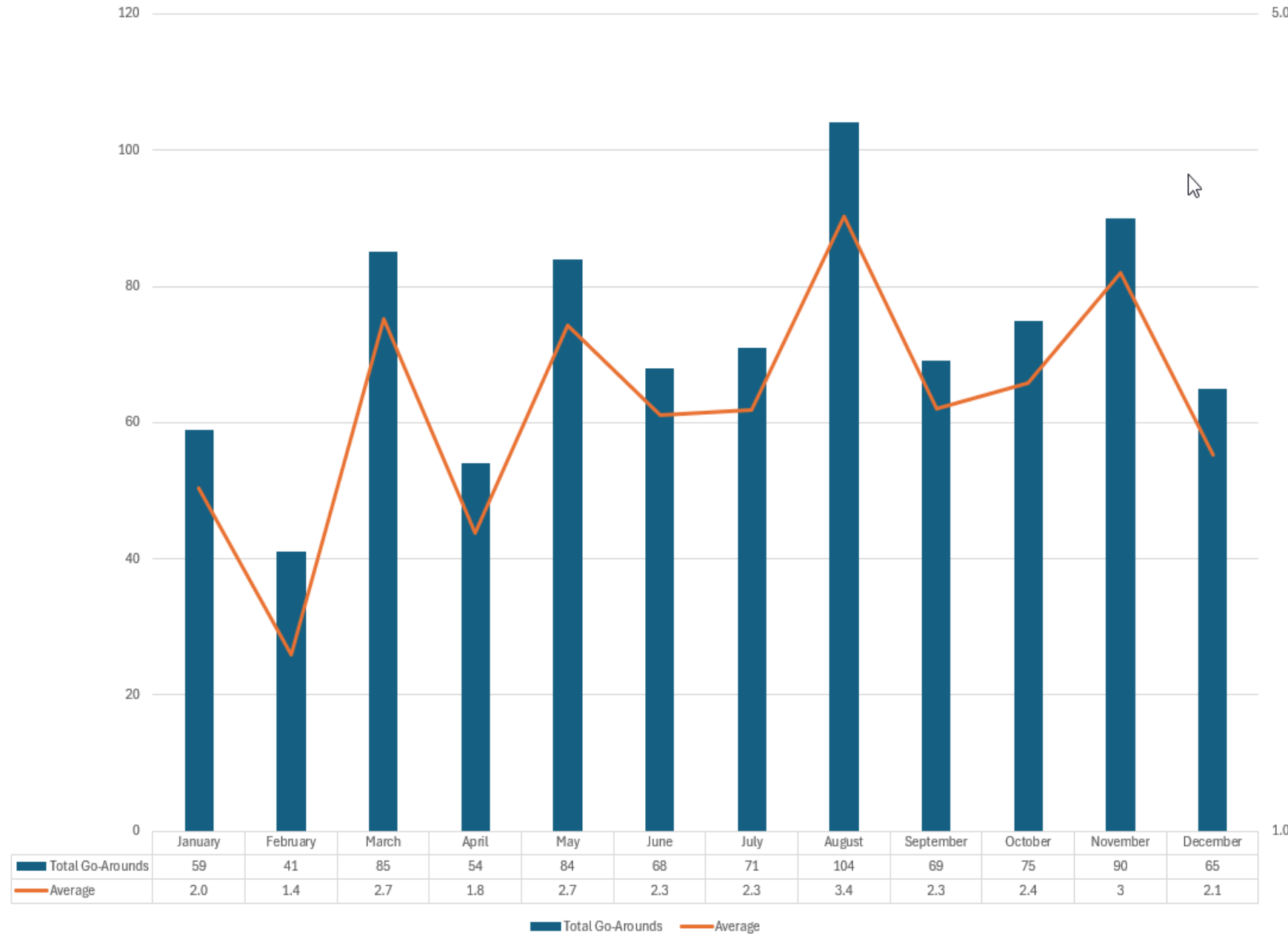


LAX Go-Arounds June 2023 - June 2024



San Diego Go-Arounds 2023

SAN Go-Around Data 2023



Flight Go-Arounds: Summary

Go-arounds are a normal aviation practice to ensure a safety is not compromised during final approach

- SEA averages 2-3 go-arounds per day
- SEA's go-around rate is not unusual or excessive when compared to other commercial airports
- Typically, there are higher rates of go-arounds during the fall and winter months