

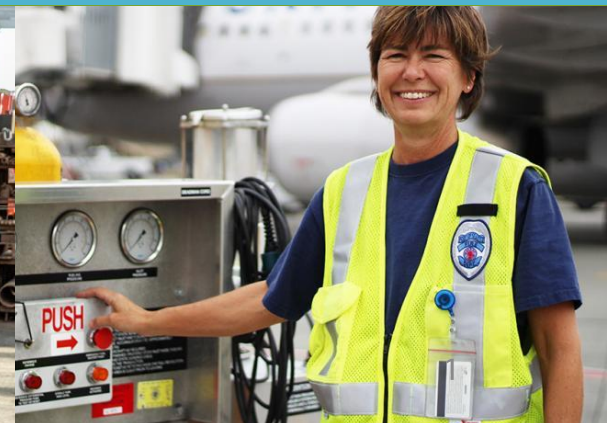


# Port of Seattle Diversity in Contracting

## PortGen First Look: Six Professional Design IDIQs

Kelvin Dankwa, [dankwa.k@portseattle.org](mailto:dankwa.k@portseattle.org)  
Community Engagement & Training Program Specialist

January 29, 2025



## **Port of Seattle Diversity in Contracting**

### **Procurement at the Port**

#### **Projects**

- Two Architectural IDIQ Contracts
- Three MEP IDIQ Contracts

#### **Networking**

- Q&A
- Introductions (Company, Industry, Prime or Sub)

# Diversity in Contracting Policy Directive

## **Purpose:**

Advance equity and address contracting disparities by increasing the utilization of Women and Minority Business Enterprises, and other disadvantaged firms.

## **Five-year Policy Benchmarks:**

- ☐ Increase to 15% the amount of spend on WMBE contracts within 5 years (Baseline was 5.3%)
- ☐ Triple the number of WMBE firms doing business with the Port (Baseline was 118; Goal is 354)



## **To be Notified of Project Advertisements**

- Register on VendorConnect
- Sign on to [Diversity in Contracting mailing list](#)

## **Once Advertised, First Steps to Pursue a Posted Project**

- Reach out to Project Plan holders on VendorConnect
- Become a Plan Holder on VendorConnect
- Attend informational/pre-bid meetings

## Temporary Procurement Site

- Current and Future solicitations and bidding documents are posted here.
- Solicitations advertised prior to the systems outage will be re-advertised.
- To be a plan holder on any specific procurements or for assistance, please email [futureprojects@portseattle.org](mailto:futureprojects@portseattle.org)

## Aviation Industry Day

Q2 of 2025



Join us for the biggest PortGen event of the year where our goal is to increase WMDBE and small business participation on Port Aviation projects.

## Planes Trains and Automobiles

Q3 of 2025



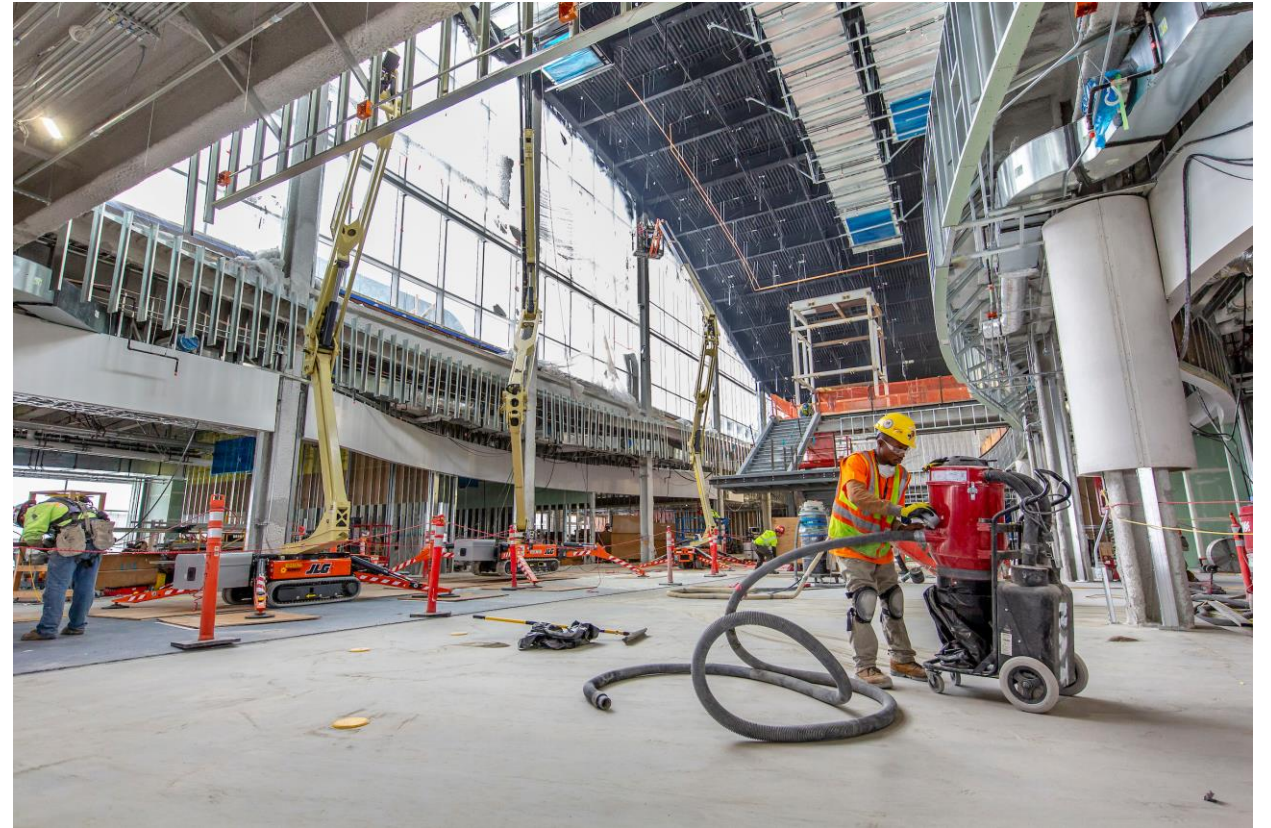
Come to this event to hear from WSDOT, Sound Transit, and the Port of Seattle's Small & Disadvantaged Business Program Managers on how small businesses can do business with each agency.

## PortGen First Look: Three Construction Projects

- Date: Wednesday, February 26<sup>th</sup>
- Time: 3:00PM – 4:30PM

### Projects to be presented:

- Food Incubator Curator Kiosks
- NEPL Phase III
- Compactor Capacity



# Today's Presentations

Project Type	Cost Estimate	WMBE Goal	Advertise Date	Presenter
Architectural Design IDIQ	\$10M (Two \$5M contracts)	20% (Aspirational)	Q1	Terry Kim
Mechanical, Electrical, Plumbing Design IDIQ	\$16M (Three \$5M contracts, one \$1M contract)	16% (Aspirational)	Q1	Tyler Salisbury



# Architectural Design IDIQ Contracts

Terry Kim

Capital Project Manager

AV Project Management Group

[Kim.t@portseattle.org](mailto:Kim.t@portseattle.org)

## What is an IDIQ?

- IDIQ stands for Indefinite Delivery/Indefinite Quantity. It is based on a set contract value that can be utilized for a set amount of time.

## Why does the Port use IDIQ contracts?

- The Port utilizes IDIQ contracts to meet variable workload projections for professional design services.
- While larger projects will typically procure project specific design contracts, smaller projects may be designed using an IDIQ contract.
- This streamlines the procurement process for smaller projects since the project team does not have to solicit design services on their own.

## What does that mean for you?

- Advantages

- Offers more opportunities for firms to work on Port projects either as a Prime consultant or Sub Consultant on a project.
- Firms may work on multiple projects at the Port at a given time depending on project specific scope and staffing needs.

- Disadvantages

- IDIQ procurement process is time consuming.
- The selected firm must be available to work on projects for the duration of the contract ordering period.

# Contract Overview

**Purpose:** Award two Architectural contracts to increase capacity due to a growing need for design services.

**Background:** The current Architectural IDIQ contracts will soon reach capacity and there is an immediate need for new contracts. Smaller projects may be affected if they must procure their own design services which will add time and money to the project.

**Estimated Cost:** \$10M, Two (2) contracts at \$5M each with a 5-year ordering period.

**WMBE Goal (each contract):** 20% Aspirational WMBE Goal



# Contract Award Details

**One (1) solicitation will be used to award two contracts.**

- Teams will be evaluated on (See solicitation for details):
  - Team composition
  - Project approach
  - Team interview
  - WMBE inclusion plan
- Top 2 teams will be awarded a contract valued at \$5M each

# Past Projects

- Common use Gate conversion
  - Aircraft layout, Terminal case work
- Restroom Renovations
  - Full demolition and rebuild
- Exit Signage evaluation
  - Campus wide inspection, inventory, and updates
- Keys to Cards Conversion
  - Ticket counter renovations to add card readers to baggage doors

# Potential Projects

- Port Architectural Design Standards and Guidelines
  - Review and update current standards in collaboration with Port stakeholders.
- Finish Upgrades
  - Removal and replacement in various areas throughout the airport.
- Restroom Renovations
  - Full demolition and rebuild.
- Parking Garage Improvements
  - Replace entry system equipment, Employee bus stop upgrade, and License plate reader equipment.

# Components / Trades of Interest

- Architectural
- Structural
- Civil
- Landscape
- Acoustics
- Mechanical
- Plumbing
- Fire Protection
- Environmental
- Cost Estimating
- Interior Design
- Signage and Wayfinding
- Electrical
- Security



# Contract Schedule

Item	Anticipated Date
Solicitation process	January 2025
Proposal review and Interview process	March 2025
Contract Award	May 2025

# Mechanical, Electrical, Plumbing (MEP) Design IDIQ Contracts

Tyler Salisbury

Capital Project Manager

AV Project Management Group

[Salisbury.t@portseattle.org](mailto:Salisbury.t@portseattle.org)

# Contract Overview

**Purpose:** Award up to 4 contracts for project design support.

**Background:** The current MEP IDIQ contracts will soon reach capacity and there is an immediate need for new contracts. Smaller projects may be affected if they must procure their own design services which will add time and money to the project.

**Estimated Cost:** \$16M Three (3) at \$5M and One (1) at \$1M with a 5-year ordering period.

**WMBE Goal (each contract):** 16% Aspirational WMBE Goal

# Contract Award Details

**One (1) solicitation will be used to award up-to 4 contracts.**

– Teams will be evaluated on (See solicitation for details):

- Team composition
- Project approach
- Team interview
- WMBE inclusion plan

– Top 4 teams will be awarded a contract.

- Top 3 scoring teams will be awarded a \$5M contract
- The 4<sup>th</sup> scoring team will be awarded a \$1M contract

Firms can be a part of multiple teams (Prime and Sub)



# Types of Work

- Full Project design
  - Discipline specific design drawings (Concept to permit)
  - Preparation of Design specifications
  - Any required calculations (Structural, Flow rates, Electrical load)
- Basis of Design (BOD)
  - Develop basis of design (Design basis) documents for procurement.
- Notebook Development support
  - Taking a project concept to initial design

## Examples of Previous Contracts

- Sanitary Pipe Replacement – Full Design (MC 0321732)
- Rental Car Facility Quick Turn Around – BOD (MC 0322049)

# Past Projects

- Water Pump Replacement (MC 0319994)
  - Mechanical, Electrical, Plumbing, Low voltage communications
- Variable Frequency Drive (VFD) Replacement (MC 0321931)
  - Heavy Electrical, Low voltage communications (Meters)
- Flow Meter replacement (MC 03222061)
  - Mechanical and Plumbing, Minor electrical
- Sanitary Pipe Replacement (MC 0321732)
  - Plumbing, Structural, Mechanical

# Potential Projects

- Communications between Escalators and Elevators
  - Communications (Fiber, Ethernet, Low voltage), Electrical
- Temporary or Backup Boiler connections
  - Plumbing, Mechanical, Electrical, Low Voltage controls
- EV Charging
  - Electrical, Civil, and Architectural
- Pre-Conditioned Air system improvements
  - Plumbing, Mechanical, Structural

# Components / Trades of Interest

- **541330 - Engineering Design Services**
  - Mechanical
  - Electrical
  - Civil
  - Communications (Low Voltage – Data)
- **541512 - Computer-aided Design (CAD)**
  - Design and Construction drawings
  - Record and As built drawing updates



# Project Schedule

Item	Anticipated Date
4 MEP IDIQ Contract Solicitation Advertisement	2/11/2025
- All project dates will be included in the project manual when the solicitation is publicly advertised	

# Questions?

# NETWORKING

Your Name

Business Name

Industry

Business Certifications

Prime or Sub

# THANK YOU FOR ATTENDING



## POST-EVENT SURVEY

