



Port of Seattle®

South King County Community Impact Fund

Community Outreach Presentation 2025

Port of Seattle®

The Port of Seattle exists on Indigenous land.

We acknowledge the ancestral homelands of those who walked here before us and those who still walk here, keeping in mind the integrity of this territory where Native peoples identify as the Duwamish, Suquamish, Snoqualmie, and Puyallup, as well as the tribes of the Muckleshoot, Tulalip, other Coast Salish peoples, and their descendants.

We are grateful to respectfully live and work as guests on these lands with the Coast Salish and Native people who call this home. This land acknowledgement is one small act in the ongoing process of working to be in good relationship with the land and the people of the land.



Overview

- Provide information and updates about the SKCCIF
- Share the new Economic Opportunities for Communities Program model and upcoming funding opportunity
- Stay connected

Background – *Who are we?*

Port of Seattle is a special purpose government.

Mission

“To promote economic opportunities and quality of life in the region by advancing trade, travel, commerce, and job creation in an equitable, accountable, and environmentally responsible manner.”

Port Commissioners

- King County voters select five Commissioners for four-year terms.
- Sets Port policies through resolutions and directives.

COMMISSIONERS



Ryan Calkins



Sam Cho



Fred Felleman



Toshiko Grace Hasegawa



Hamdi Mohamed

EXECUTIVE DIRECTOR



Stephen P. Metruck



Background – *Who are we?*

We own and operate:

- Seattle-Tacoma International Airport (SEA)
- Fishermen's Terminal
- Public marinas

We also own:

- 2 cruise ship terminals
- Marine cargo terminals
- Grain terminal
- Real estate assets



Key Contacts



South King County Community Impact Fund

- AJ McClure (Environmental Improvement Program)
 - mcclure.a@portseattle.org
- Cathy Vue (Economic Opportunities Program)
 - vue.c@portseattle.org
- Victor Kravcenko (Procurement Officer for Economic Opportunities)
 - kravcenko.v@portseattle.org



Community Outreach

- Nyambura Ruhiu and her team (Siliana Consulting, LLC.)
- Contracted Community Liaisons

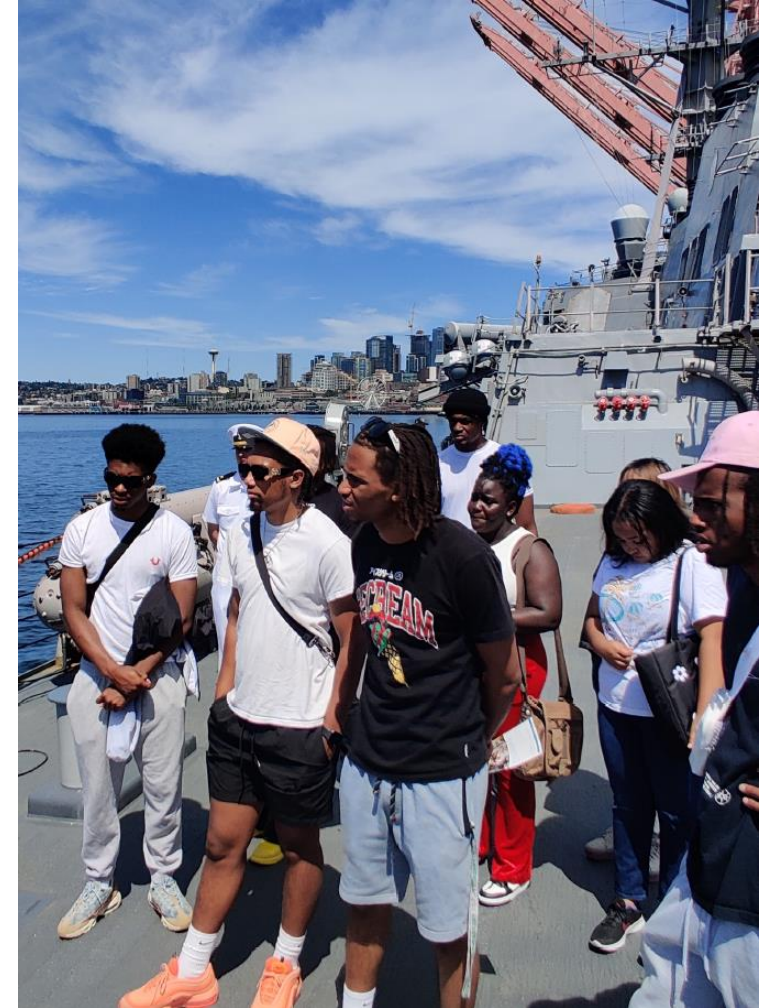
What is the SKCCIF?

Mission

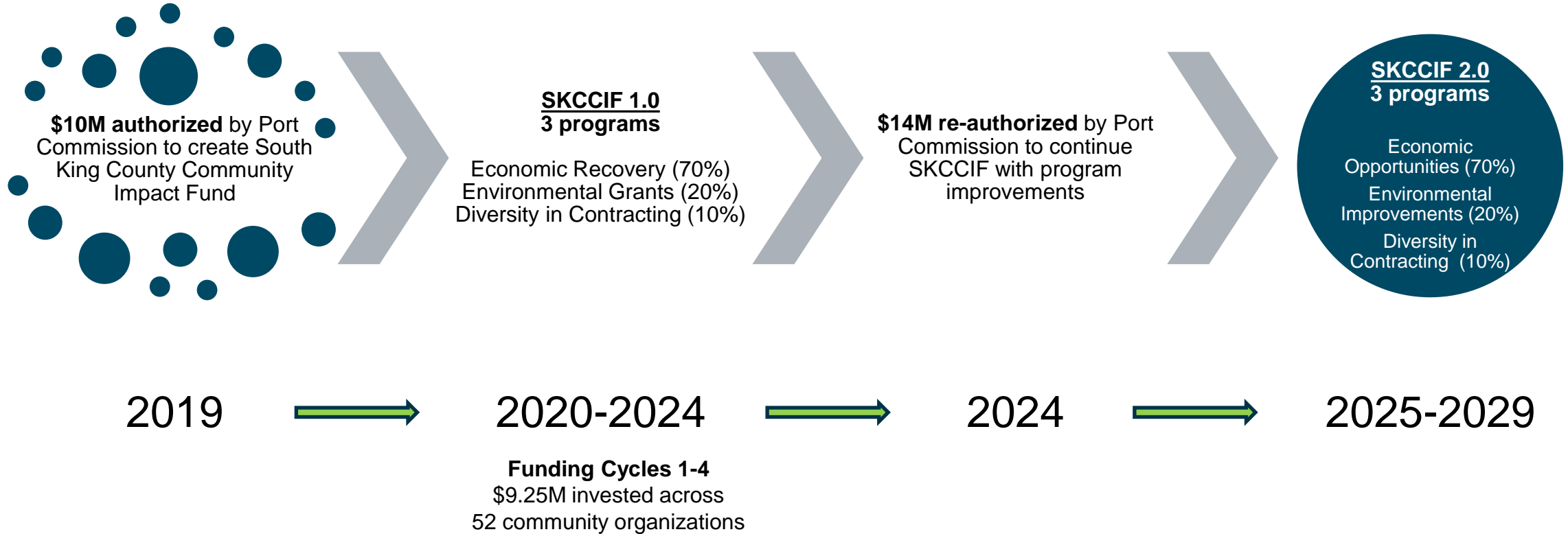
The Port removes systemic barriers and enhances the quality of life for structurally excluded communities. We do so by increasing access to living wage jobs in Port-related industries, improving public spaces, and investing in community-led projects.

Vision

SKCCIF is a model for partnerships that address structural inequities, creates thriving communities, and advances equity for all.



SKCCIF Timeline



SKCCIF 2.0



Strengthen relationships with diverse communities



Expand geographical eligibility in King County



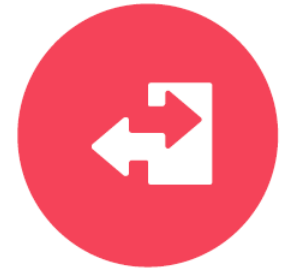
Prioritize support and funding in the six near-airport cities



Increase and sustain environmental improvements



Support more WMBE and Small Businesses



Redesign model of Economic Recovery program

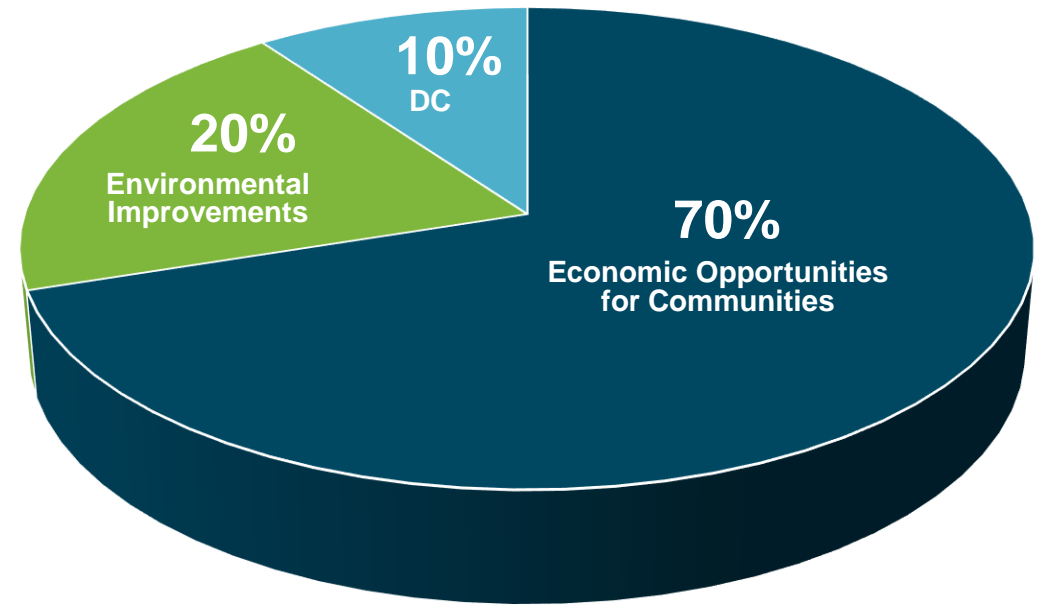
WMBE – women, minority-owned business enterprises

What is the SKCCIF?

**\$14 million community investments
from 2025-2029 to support**

Three primary programs:

1. Economic Opportunities for Communities
2. Environmental Improvements
3. Diversity in Contracting (DC)



Who does SKCCIF work with?

- Community-based organizations who have experience working with historically underrepresented communities, such as:
 - Communities of color
 - Immigrants and refugees
 - Low-income communities
 - Women
 - Other structurally excluded communities

Where does SKCCIF serve?

- **Near-airport cities – Priority Area**

- Burien
- Tukwila
- SeaTac
- Normandy Park
- Des Moines
- Federal Way

- **Organizations with a physical office location in the near-airport cities will be evaluated more favorably**

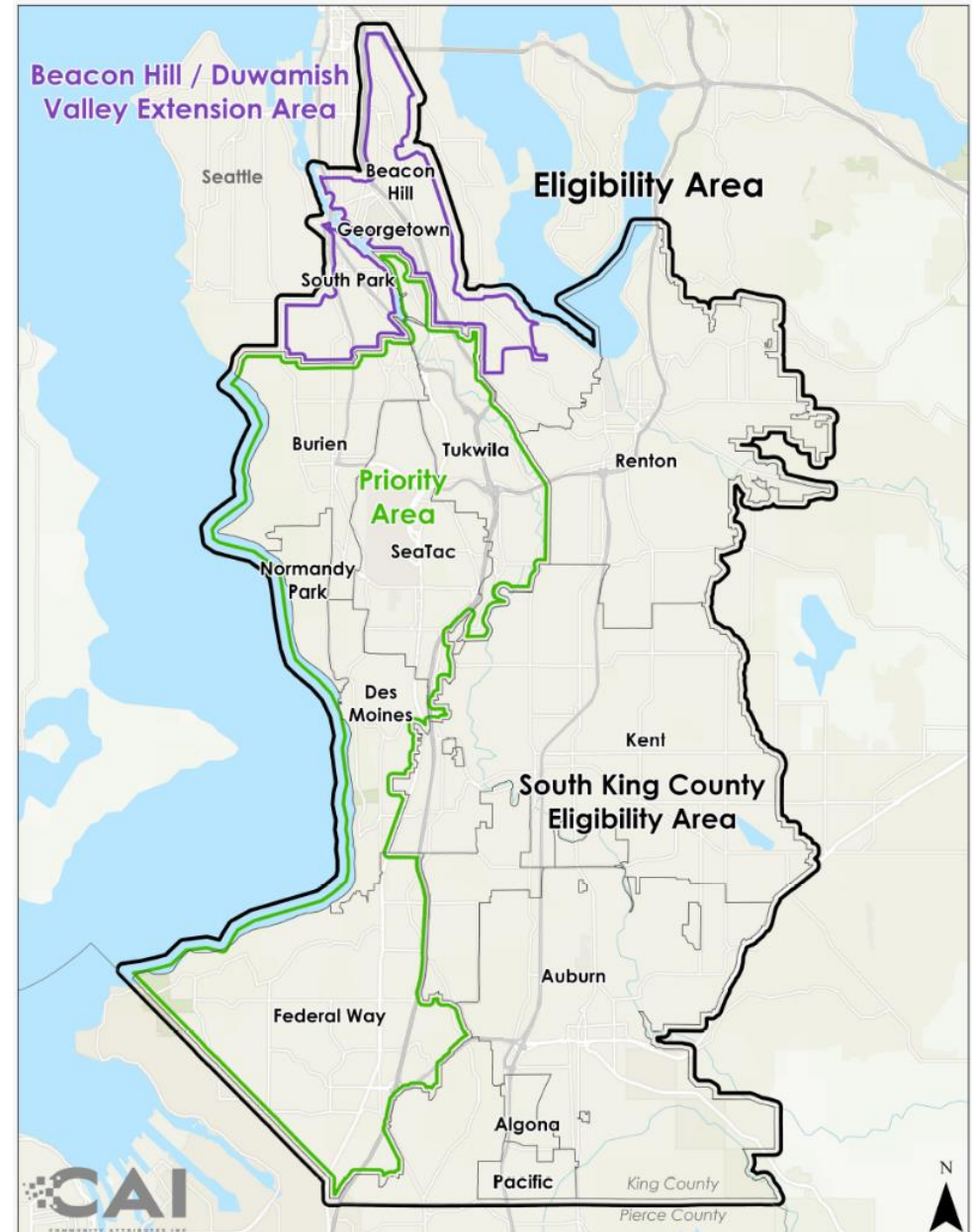
- ***New* Expansion Areas**

- South King County Cities
 - Renton
 - Kent
 - Auburn
 - Algonia
 - Pacific
- Beacon Hill/Duwamish Valley Extension

Eligible Geographic Area Map

- Services must be located within the eligible geographic area
- The **Equity Index** is an online interactive map that displays a representation of social and environmental disparities in King County.
- The Equity Index shows specific boundary.

[Online Tool](#)



Service Agreement vs Grant

- **SKCCIF operates as a service agreement (contract)**
 - Specific reporting requirements on a regular basis
 - Payments are based on deliverables and milestones
 - Deliverables are contracted outcomes
- **Program staff are available to support partners**
 - Kick-off meeting
 - Orientation and training
 - Quarterly in-person or virtual partner meetings
 - 1:1 technical assistance available as needed

When will SKCCIF be available?

Rebranding/Finalizing
Improvements

November 2024-January
2025

Outreach + Engagement

Q4 2024 leading up to the
release of each RFP

Release RFPs

Economic Opportunities for
Communities

- Partnership Track: March 2025
- Capacity Track: Coming 2026

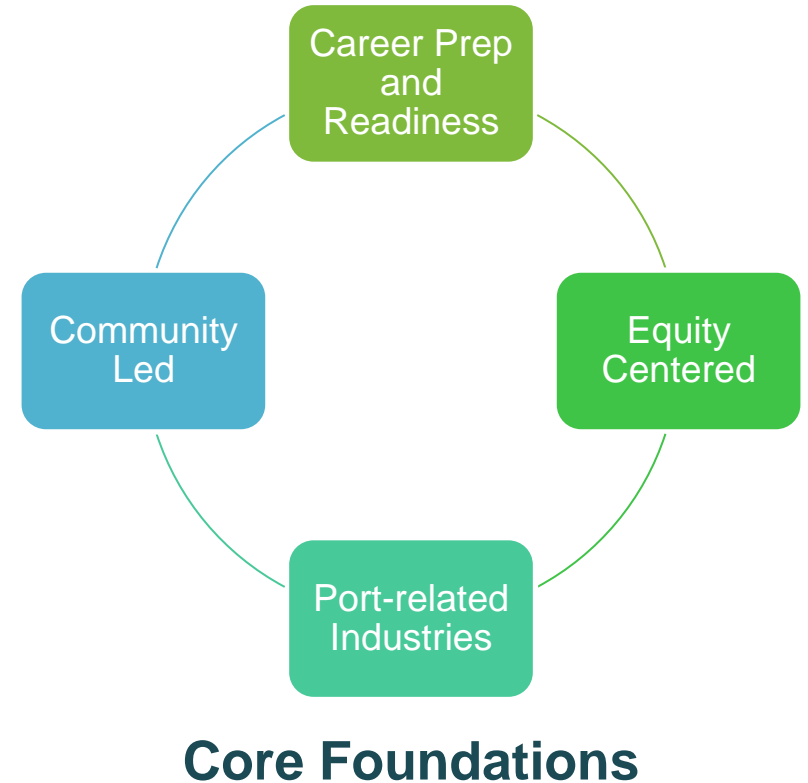
Environmental Program

- Phase 5: Sept 2025

SKCCIF
Economic Opportunities for Communities
(EOC) Program

What is the EOC Program?

- **Goal:** Create equitable access to living wage jobs and careers in Port-related industries
- **Our work:** Community-led career-prep and readiness programs increasing awareness and access to jobs and careers in Port-related industries
 - Underrepresented communities in near-airport cities, South King County, Duwamish Valley and Beacon Hill.



Two Types of “Tracks”

Partnership Track

- Build or expand career prep and readiness programs in Port-related industries



RFP: March 2025

New

Capacity Building Track

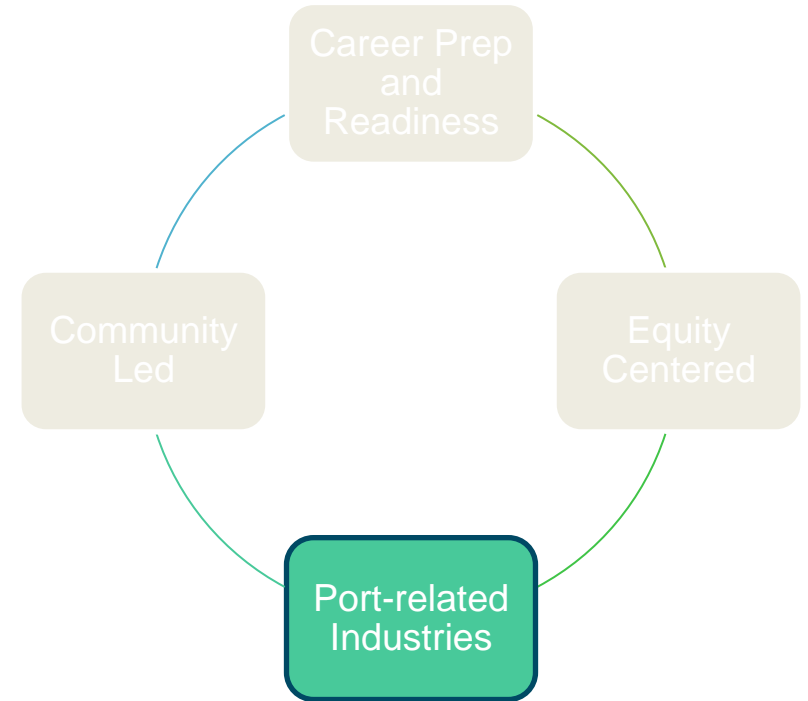
- Receive capacity building and mentorship to gain tools to create a career-prep and readiness program in Port-related industries

Coming 2026

What are Port-Related Industries?



- Wages paid in Port-related activities **exceed** regional averages across other occupation categories.



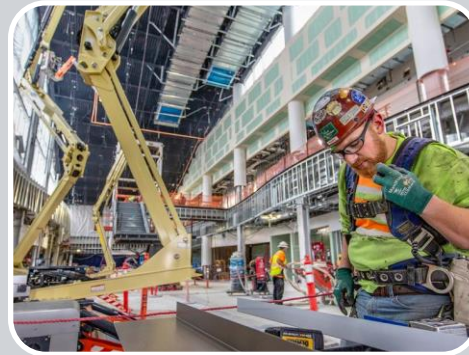
Core Foundations

Examples of Port-Related Industry Jobs



Aviation

- Airport-based jobs
- Aircraft manufacturing
- Military aviation
- Air safety specialist
- Aviation maintenance technicians
- Supply and cargo logistics
- Airfield operation



Construction Trades

- Construction (roads, highways, infrastructure)
- Specialized trades (electricians, plumbers, masons, etc)



Green Jobs/Careers

- Stormwater management
- Habitat restoration
- Sustainable transportation
- Environmental compliance
- Environmental sustainability



Maritime

- Sailor
- Marine oilers
- Able-bodied sea persons
- Mechanics
- Machinists
- Riggers
- Marine carpenters
- Navigation
- Shipping

NOT Port-Related Industry



X General Retail



X General Service Industry



X Legal



X Human Resources



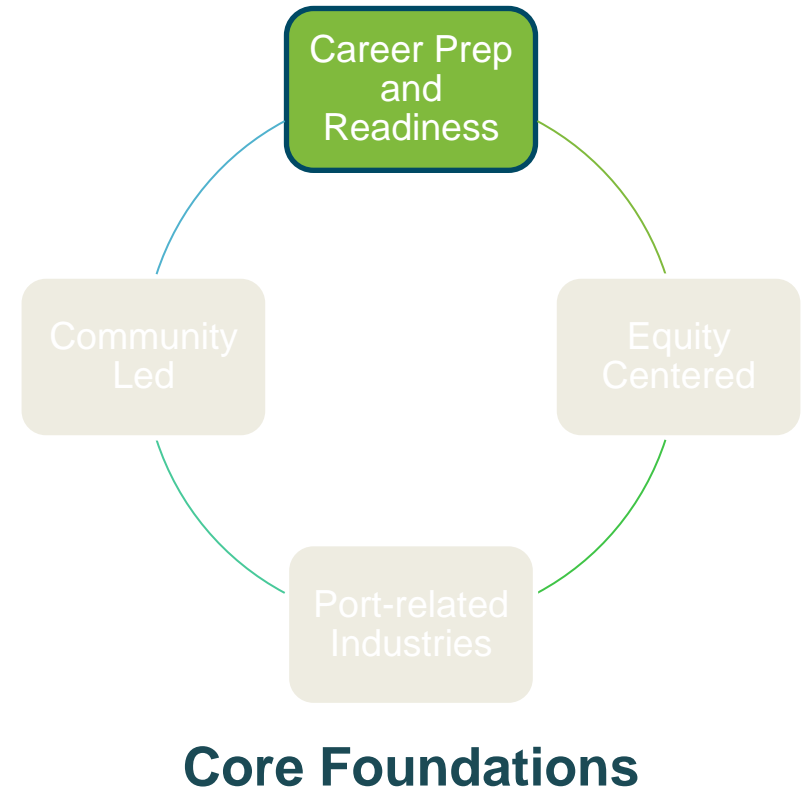
X Other Professions not specific to Port-related Industries

What type of services can be provided?

- **Career Prep and Readiness**

Scopes:

- Awareness
- Exploration
- Preparation
- Training



Awareness

Awareness:

Provide information about jobs and careers in Port-related industries and how to explore one's own ability and interests.

Example Activities specific to Port-related industries:

- Workshops
- Career days
- Job research and skills assessment
- Guest speakers
- Lunch and learn series
- Interactive or video presentation tools

Level of engagement with employers: Low



Family workshop about Port-related industries

Exploration

Exploration:

Provide opportunities be exposed to and identify skills required for jobs and careers in Port-related industries

Example Activities specific to Port-related industries:

- Career fairs
- Worksite tours
- Informational interviews
- Simulation
- Job shadows
- Mentorship

Level of engagement with employers: Low-Medium



Worksite tour

Preparation

Preparation:

Provides on-going, hands-on opportunities to learn the skills required for jobs and careers in Port-related industries

Example Activities specific to Port-related industries:

- Readiness curriculum
 - Resume consultation, mock interview
- Vocational ESL specific to Port-related industries
 - Does not cover general ESL
- Work-simulation projects
- Service-learning projects (on-going)
- Cooperative work experiences
- Short-term internships

Level of engagement with employers: Medium



Work-simulation projects

Training

Training:

Provides specific trainings and competencies to pursue jobs and careers in Port-related industries

Example Activities specific to Port-related industries:

- In-language curriculum-based training
- Certified trainings
- On the job training
- Internship
- Pre-apprenticeship

Level of engagement with employers: High



Training

Community Spotlight: Key Tech Labs

- [Key Tech Labs](#)
- **Port-Related Industry: Green Jobs**
- **Career-Prep and Readiness Scopes**

Exploration

- 14 online modules

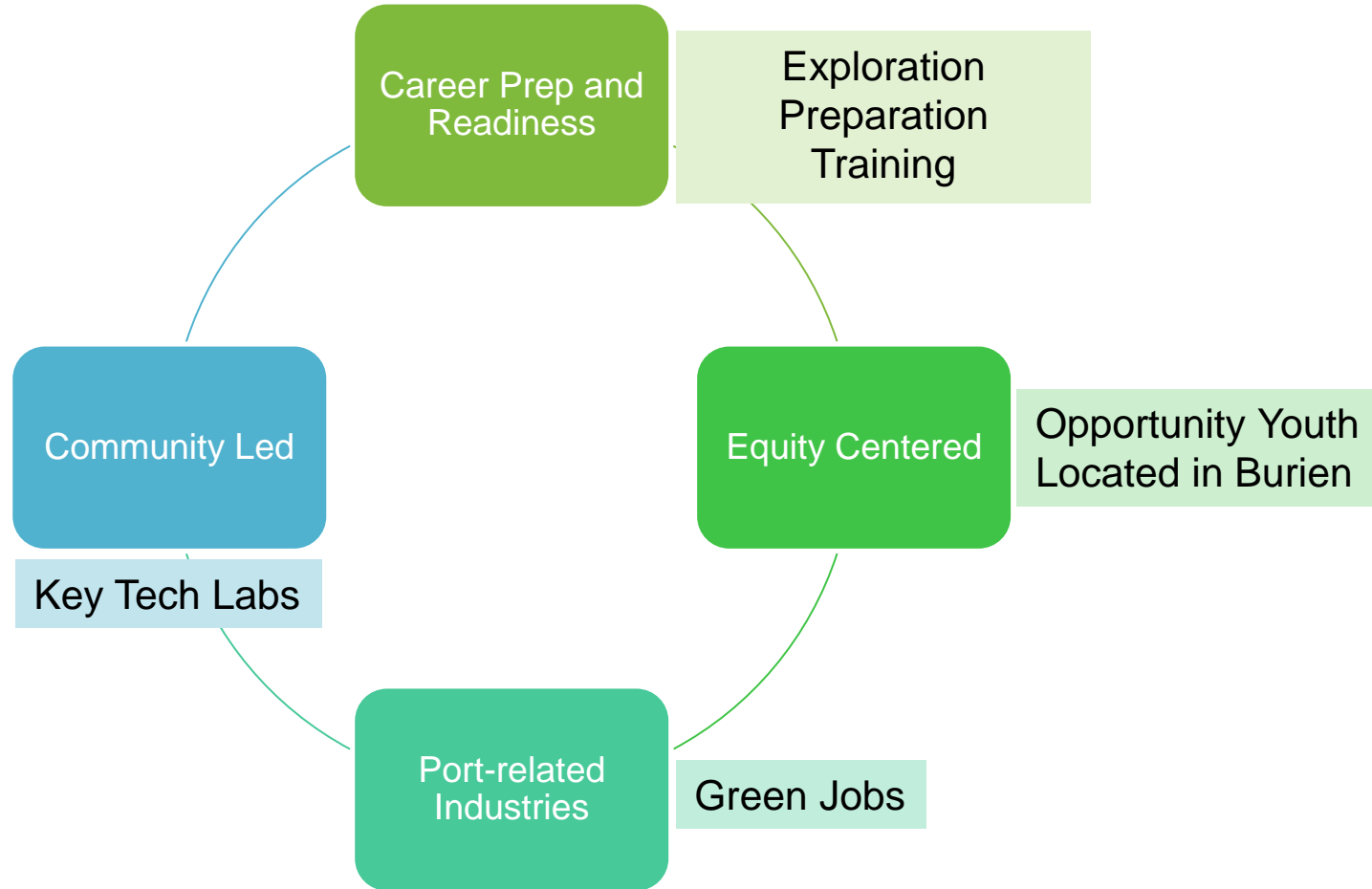
Preparation

- In-person project with 2 sub-partners
- In-person job readiness workshops with Restorative Justice Circles

Training

- OSHA 10 and NABCEP certification CEUs

Community Spotlight: Key Tech Labs



Funding Opportunity

- RFP coming out **March 3, 2025**
 - Approximately \$2M
 - Competitive application process
- Funding Duration and Amounts
 - Single-Year (1 year) projects; up to \$115,000
 - Multi-Year (2-3 year) projects; up to \$275,000

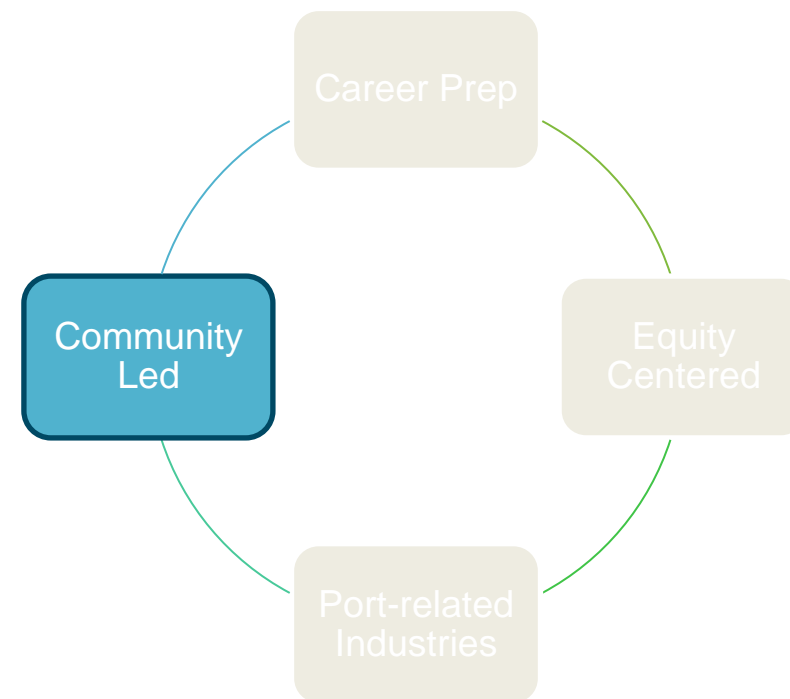
Where's the RFP?

On or after Feb 24, VendorConnect will be live!

1. Go to Port VendorConnect: <https://hosting.portseattle.org/sops/>
Feb 24 - March 2: Click on “Future Solicitations”
March 3: Click on “Current/Past Solicitations”
2. Search **Procurement # 00322251**

Who can apply?

- **Community-based organizations with the following requirements:**
 - 501(c)3, 501(c)6 or CBOs with fiscal sponsor
 - Experience and trust with underrepresented communities in near-airport cities, South King County cities, Duwamish Valley and Beacon Hill
 - Experience with workforce development and career-prep and readiness programming in Port-related industries (aviation, construction trades, green jobs and maritime)
- **Organizations with a physical office location in the near-airport cities will be evaluated more favorably**



Core Foundations

Tool: Self-Assessment

- Take the self-assessment to determine if your organization and program are a right match!

STEP 1: Answer the questions in Assessment #1 to find out if your organization meets the eligibility requirements to apply for the SKCCIF, Economic Opportunities of Communities (EOC) Program 2025 funding.

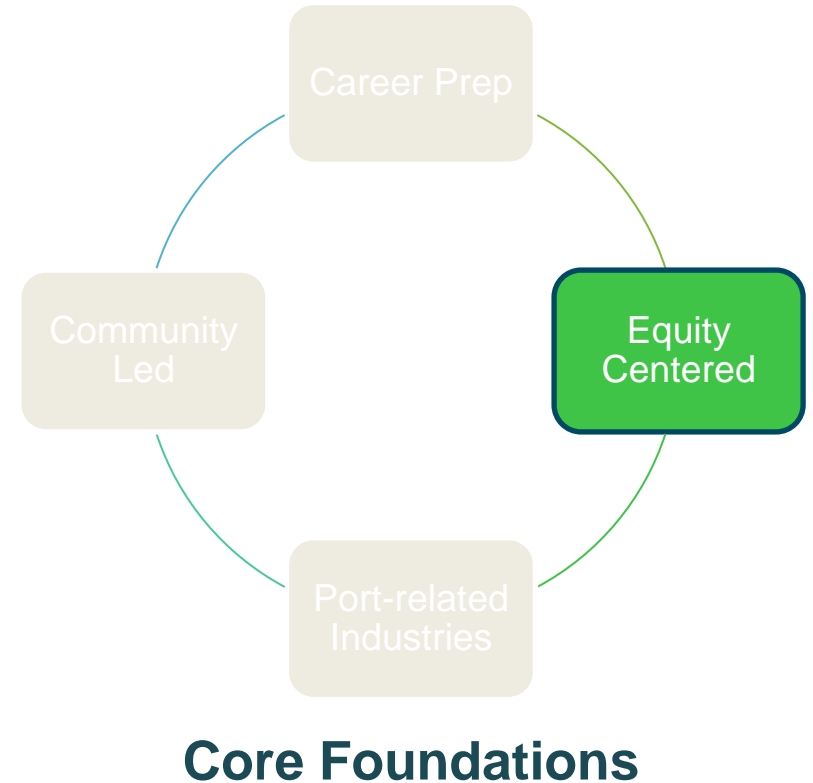
Assessment #1: Organization Eligibility	
1. Is your organization one of the following tax-exempt statuses: <ol style="list-style-type: none"> Non-profit organization (501 (c)3), or Chamber of commerce (501 (c)6), or Organization with 501(c)3 or 501(c)6 fiscal sponsor 	Yes or No
2. Does your organization have history of experience and trust working with underrepresented communities (communities of color, immigrants, refugees, low-income, etc.) who live or work in the geographic regions : <ol style="list-style-type: none"> Near-airport cities (Burien, Des Moines, Federal Way, Normandy Park, SeaTac, Tukwila) Other South King County cities (Kent, Renton, Auburn, Algonia, Pacific) Beacon Hill or Duwamish Valley 	Yes or No
3. Does your organization have workforce development experience and relationships with partners in at least one of the Port-related industries : <ol style="list-style-type: none"> Aviation Construction Trades Green Jobs/Careers Maritime 	Yes or No

STEP 2: If you answered YES to all three questions in Assessment #1, answer the questions in Assessment #2 to make sure your program proposal is a good match with EOC Program requirements.

Assessment #2: Program Proposal Requirements	
1. Will the proposed program be <u>located within</u> any of the geographic regions : <ol style="list-style-type: none"> Near-airport cities (Burien, Des Moines, Federal Way, Normandy Park, SeaTac, Tukwila) Other South King County cities (Kent, Renton, Auburn, Algonia, Pacific) Beacon Hill or Duwamish Valley 	Yes or No
2. Will the proposed program be provided to historically underrepresented communities , such as: <ol style="list-style-type: none"> Communities of color Immigrants and refugees Low-income communities Other economically vulnerable communities 	Yes or No
3. Will the proposed program be focused on at least one specific Port-related industry : <ol style="list-style-type: none"> Aviation Construction Trades Green Jobs/Careers Maritime 	Yes or No
4. Will the proposed program, services and activities utilize any of the strategies : <ol style="list-style-type: none"> Awareness – provide information to increase knowledge about the Port-industry Exploration – provide experiential opportunities to increase exposure to the Port-industry Preparation – provide continuous opportunities to gain skills to pursue the Port-industry Training – providing training to gain competency to enter jobs/careers in the Port-industry 	Yes or No

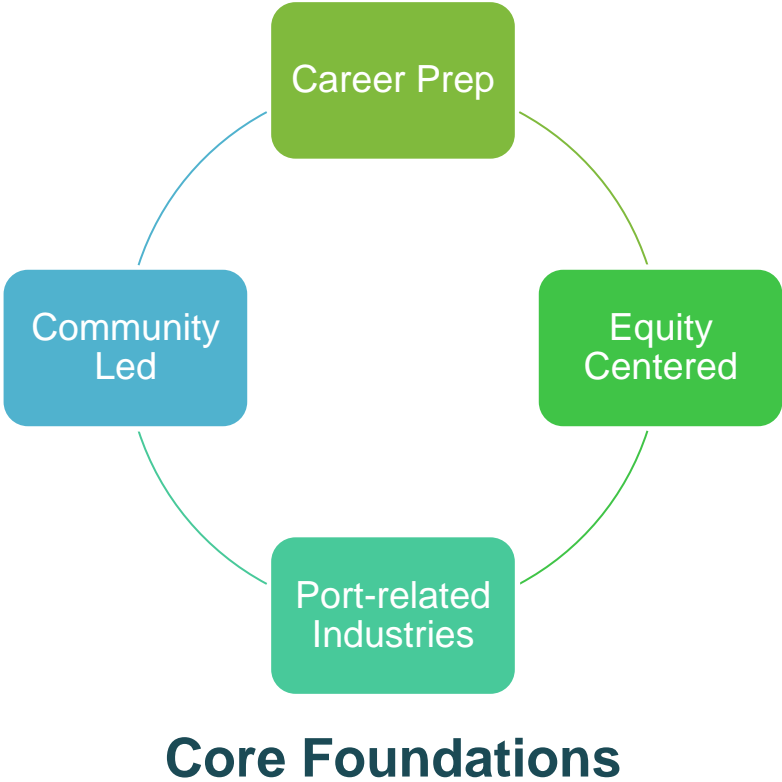
Who can be served?

- **Historically underrepresented communities who live or work in:**
 - Near-airport cities
 - South King County cities
 - Beacon Hill/Duwamish Valley Extension Area
- **Underrepresented communities include:**
 - Communities of color
 - Immigrants and refugees
 - Low-income communities
 - Women
 - Other structurally excluded communities



Summary

What?	Increase awareness and access to jobs in Port-Related Industries
Who?	Historically underserved communities – BIPOC, refugees, immigrants, low-income, etc.
Where?	South King County – Near-airport cities, SKC cities, Duwamish Valley, Beacon Hill
How?	Career-prep and readiness programs and services (awareness, exploration, preparation, training)
When?	RFP released March 3, 2025 RFP Information Sessions will be released on March 3



Stay updated!

Website

<https://www.portseattle.org/programs/south-king-county-community-impact-fund-eoc>

Subscribe to Emails

<https://subscribe.portseattle.org/SKCCIF>

VendorConnect – Become a Plan Holder!

On or after Feb 24, 2025

1. Go to the website: <https://hosting.portseattle.org/sops/>
2. Create a login account
3. Register your organization as a Vendor
4. Search **Procurement # 00322251**
5. Enroll as a “Plan Holder”



Contacts

Program Contacts

- AJ McClure mcclure.a@portseattle.org (Environmental Improvement Program)
- Cathy Vue vue.c@portseattle.org (Economic Opportunities Program)
- Emily Ho ho.e@portseattle.org (Diversity in Contracting)

Procurement Contact

- Victor Kravcenko kravcenko.v@portseattle.org (Procurement Officer for EOC)