

March 2023

Port of Seattle's Public Art Quarterly

In this issue: Introductions, Upcoming Art, Current Exhibits, and Project Status

Introduction

Hello, and welcome to the first ever Public Art Quarterly, brought to you by your one and only Public Art Program! As the number of projects for the program continue to grow, it felt necessary to put more focus on communicating internally with our stakeholders and community. Our goal with this newsletter is to get all Port employees caught up and interested with the program, the collection, and what we are working on.

New and Upcoming

Featured Upcoming Artists



[Ty Juvinel](#)

[MInC]

Ty is a painter, storyteller, and carver. His past partners include The Burke, SPL, and MOHAI. His newest work is a stunning [welcome figure](#) for the Edmonds Waterfront Center.

[Shogo Ota](#)

[MInC]

It is hard to live in Seattle without running into one of Shogo's designs. You may have seen his work while sitting at [Starbucks](#), supporting local food and retail, or reading *The Stranger*.

[Sabine Marcelis](#)

[Widen Arrivals]

Sabine is a Dutch designer and artist who specializes in minimalism, warm tones, and light. She recently collaborated with IKEA for their [VARMBLIXT](#) collection.

More Selected Artists:

C Concourse Expansion

[Jaq Chartier](#), [Beccy Feather](#), [June Sekiguchi](#), [Crystal Worl](#), [Fumi Amano](#), [Rebecca Bird](#), [Marco Brambilla](#), [Dan Mirer](#), [Anna Mlosowsky](#)

D2 All-Gender Restroom (direct acquisitions)

[Humaira Abid](#), [Juan Alonso-Rodriguez](#), [Rebecca Bird](#), [Iván Carmona](#), [Sijia Chen](#), [Emily Counts](#)³, [Kerstin Graudins](#), [Laurie Hogin](#), [Jeffry Mitchell](#), [Seth Sexton](#), [Joey Veltkamp](#)², [Jun Yang](#)¹

Restroom Renovation

[Emily Tanner-McLean](#), [Maja Petric](#) (Below)



New Art Installed at SEA



Just installed at the end of B Concourse, **Maja Petric's *We the Stars*** is the Port's first new media piece*. Utilizing live data on births in Washington State, Petric is able to announce every time a baby is born with a flash of white light. Once in a while you might catch a glimpse of a child dancing among the changing patterns of color.

Watch this piece in motion on [the artist's website](#).

*New Media: a broad term that includes art that was designed and produced using electronics and media technology.

Temporary Exhibits



@SEA: James Washington Jr and Robert Pruitt

For Black History Month we took some time to feature the first Black artist in the Port's collection, as well as one of the more recent additions. These pieces will be on view until the end of the year.



[James Washington Jr.](#) is a historical pillar for the art scene in Seattle. The heart of his carved work is spirituality, naturalism, and empathy. [His studio](#) is both a cultural center and a historic landmark, and a [statue](#) of him holding one of his carvings was constructed by artist Barry Johnson for Seattle's Central District. Check out the serene *Gray Owl* ¹ on the ticketing level of GML Hall. This piece usually lives in the AOB and is deserving of some limelight.



[Robert Pruitt](#) is mostly known for his portraiture, so we are excited to showcase the breath of the artist's work with some of his more concept-driven pieces². Across from the A Concourse Interfaith and Sensory rooms sits three cases with work featuring familiar materials and objects.

Find another Robert Pruitt piece on permanent display inside the S Concourse SEA Lounge³.

@Pier 69: Schmidt Ocean Institute

Mixing ocean sciences with art, the Port of Seattle is thrilled to showcase a collection of pieces made through the Schmidt Ocean Institute's Artist-at-Sea Program. In this residency, artists create works while aboard the research vessel *Falkor*.



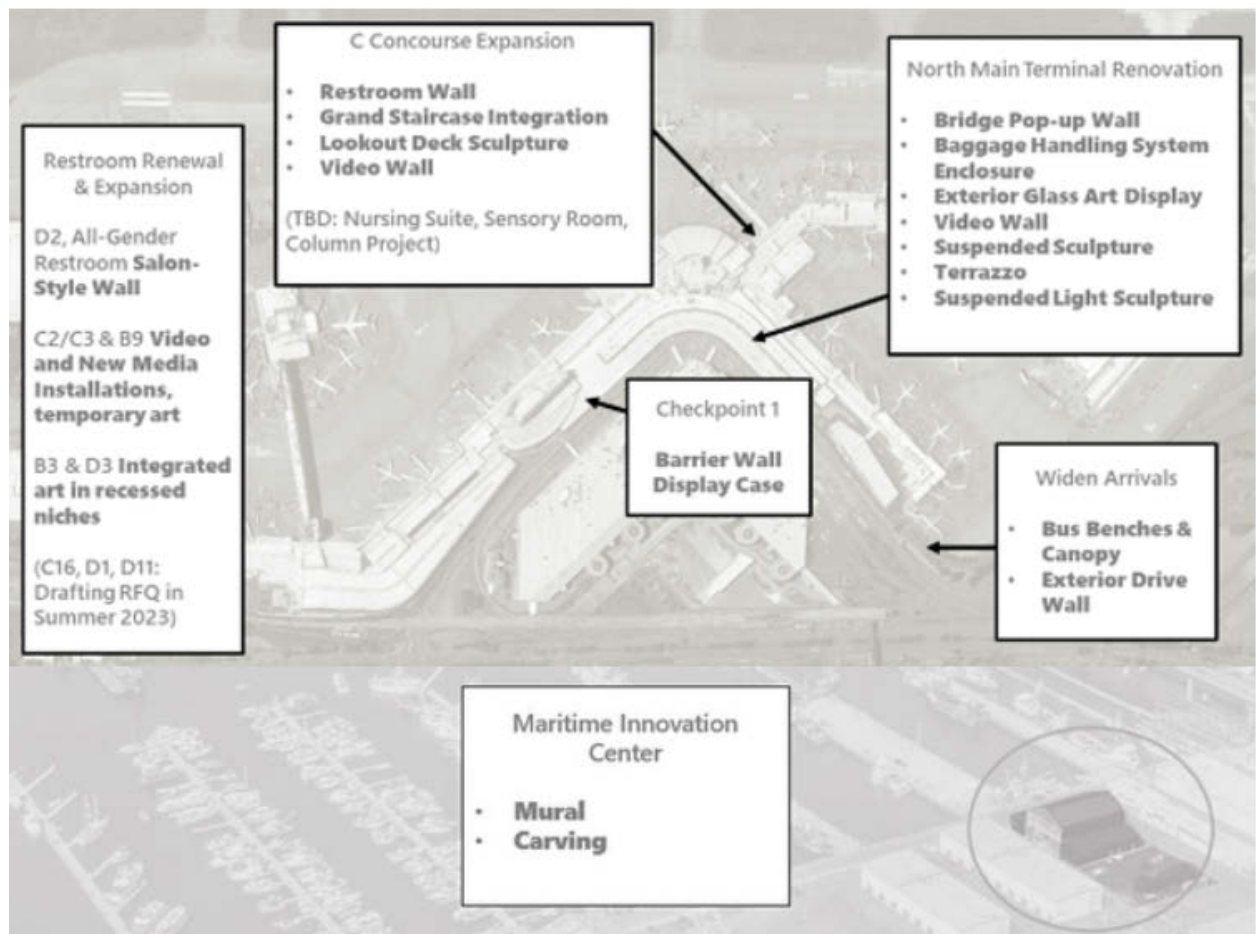
Please join us at the Pier 69 lobby on April 26th (Wednesday) for a celebration of the exhibit, 11:00 am - 2:00 pm.

[Check out the entire collection here.](#)



Current CIP Status

| 1. Planning Phase | 2. Artists Awaiting Contract | 3.Design Phase | 4. Art In-Delivery |
|---|--|---|---|
| <ul style="list-style-type: none">- Checkpoint 1- NMTP | <ul style="list-style-type: none">- Restroom (D3,B3)- C Concourse Expansion | <ul style="list-style-type: none">- Widen Arrivals- Fishermen's Terminal: MInC-Restroom (C2/C3 South) | <ul style="list-style-type: none">- Restroom (D2) |



A Final Bit of Background

The Port has been an active proponent of public art since the late 1960s, and the first public agency in the region to establish a public art collection. With the longest running 1% CIP for art in the country, the Port's Public Art Program continues to grow and evolve, as it acquires and incorporates high-quality, modern, and contemporary art into new and upgraded facilities.

It is important to remember that while the program is in charge of introducing and maintaining art in Port spaces, its main



focus is to serve the creative community of Washington and give jobs to working artists. We are thankful for your continuing support in this mission.

P.S.

New project? Don't hesitate to reach out if you think your work will impact an art asset. We are available Monday through Friday via email.

Your Public Art Team is:

Tommy Gregory, *Public Art Program Sr. Manager*

Annabelle Goavec, *Public Art Program Coordinator*

Pete Fleming, *Public Art Technician*

Newsletter written by Daphne Maiden, *College Intern*

Let us know how we did on our first quarterly, and what you would like to see next!

All photos above were taken by the Public Art team or sourced from artist's official websites, unless otherwise noted



July 2023

Port of Seattle's Public Art Quarterly

*In this issue: New and Upcoming Art, Temporary Exhibits,
Behind the Scenes with an Art Technician, Shout Outs,
and a Familiar Face with a New Title*



Render of Net Shed 8 mural by Dozfy

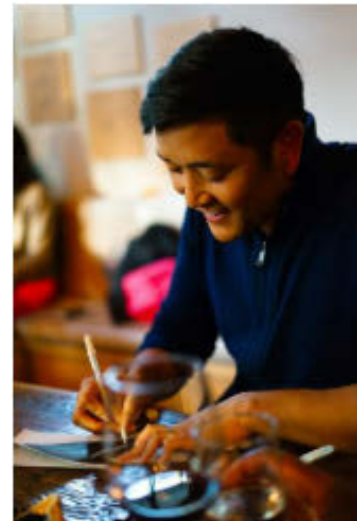
New and Upcoming Art

Net Shed Mural @ Fishermen's Terminal

Coming this summer to FT is a new mural by local artist [Dozfy](#). This marks a special occasion as it will be the **first painted mural in the collection**.

Thank you Rut Perez-Studer, Marin Burnett and Owen Oliver (public member), for the time and effort invested in reviewing submissions and engaging in thoughtful discussions. Another sincere thank you to Colby Wattling for his dedication on this project.

"[...] by promoting a healthy, clean, respectful working marina, we honor the neighborhood and the diverse marine life that frequents it." - Dozfy



North Main Terminal Project @SEA: 8 Artists Chosen



[Morgan Madison](#)

Ext. Glass Display

[Jennifer Steinkamp](#)

Video Wall

[Julie Alpert](#)

Bridge Pop-Up Wall



[Matthew Szosz](#)

Suspended
Sculptures,
Pop-Up Walls

[Soo Sunny Park,](#)

Suspended
Sculpture

[Sarah More](#)

Baggage Handling
System Enclosure

[Barry Johnson](#)

Baggage Handling
System Enclosure

Following a record-breaking turnout for the program, eight artists have been chosen for the North Main Terminal Project.

"I've had a note in my studio that I wrote to myself a decade ago that says, "one-day, you'll have work at SeaTac." I've looked at that message thousands of times over the years while I worked. Words can't express how I feel right now. Looking forward to collaborating." -excerpt of email from Barry Johnson

Temporary Exhibits



GML Hall temporary mural install

A new vinyl wrap mural has been installed in Gina Marie Lindsey Hall. It is a collaboration between [Students Rebuild](#) (program of the Bezos Family Foundation), Alaska Airlines, and the Port.

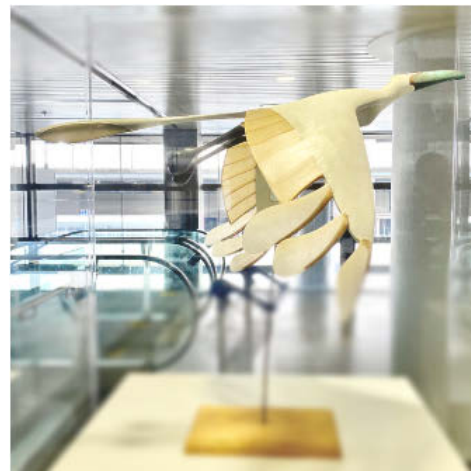
Students Rebuild worked with Seattle-based artist [Blanca Santander](#) on a mural to culminate the [Welcoming Refugees Project](#), which generated more than \$1.5

million in donations to refugee aid organizations this year. This piece portrays the artist's experience immigrating to Seattle in 1996 through the lens of a young girl navigating two worlds: one being her home in South America and the other being her new home in Seattle, and includes postcards created by young people who participated in the Students Rebuild Welcoming Refugees Project. Blanca hopes the mural welcomes children just like her to Seattle, to show that the immigrant experience can be joyful and hopeful.



Familiar Miniatures

Sometimes during the designing phase, artists create a three-dimensional **maquette**, or a model of the concepts they are playing with. The Port is lucky to have a collection of these small models from past art commissions. Maquettes for *Roscoe* by Brad Story (right), and *Eyes on the World* by Richard Elliot can be found on display next to Skybridge 1.





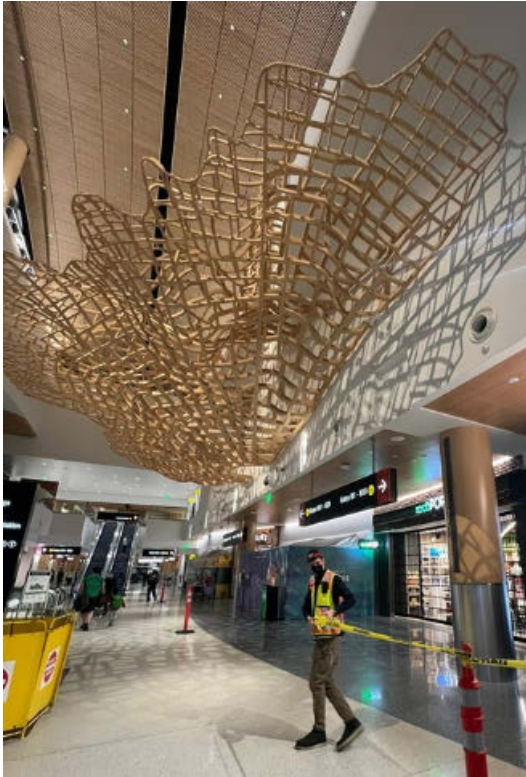
Familiar Miniatures: City-Wide

If you are familiar with the temporary art cases in GML Hall, you might have caught a glimpse of a whimsical multimedia series by [Diem Chau](#). Tiny dioramas of famous, local art balance on towers of mismatched dishware. Each sculpture is sure to give a warm feeling to those familiar with these corners of Seattle.

Pop Quiz! How many of these landmarks can you name, and where are they located?

(Answers below)

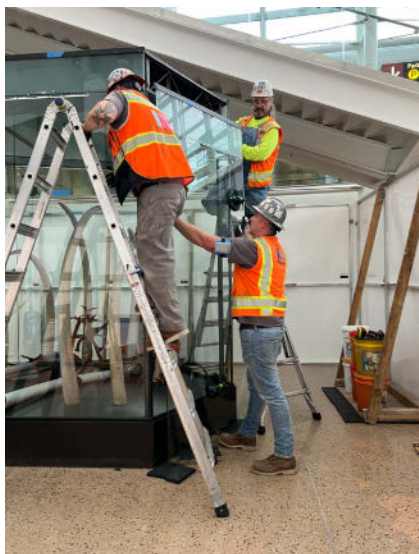




Behind the Scenes with an Art Technician

Pete Fleming is our first, full-time art technician, and this month marks his one-year anniversary with the Port! To celebrate, we are going behind the scenes to learn what an art tech is and recap recent projects.

Art technicians are in charge of maintaining, updating, and caring for the permanent collection. This includes installing, relocating, storing, and cleaning art in a safe way. Pete's responsibilities also include the upkeep of maintenance data and overseeing large-scale conservation and installation efforts. Every piece of art is widely different, so an art technician must be proficient with solving unique challenges while keeping artwork pristine.



Cleaning John Grade's *Boundary*

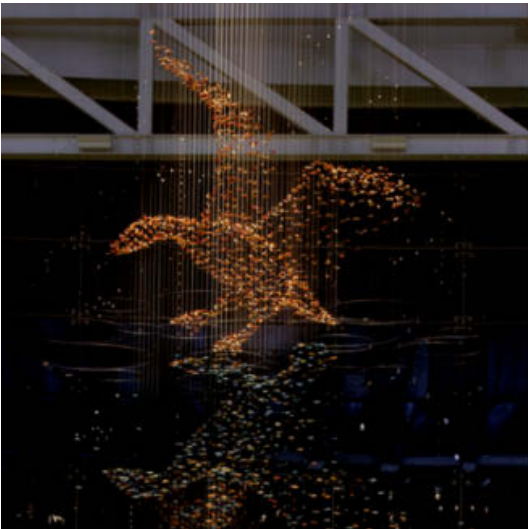
How do you clean one of the largest objects in the airport art collection, that is suspended over the busy central area of the North Satellite? That is the question that had to be solved when it came to removing dust buildup from “Boundary” by John Grade. The answer: working overnight from lifts, Pete and Tommy vacuumed the inside and outside of the wooden structure, utilizing their flexibility



(and some very long hose extensions) to access the complex surfaces!

De-Installing William Morris' *Northwest Garnering*

To make space for the Checkpoint 1 Expansion project and to protect the artwork from upcoming demolition activity, we removed over 136 hand formed glass tusks, bones, and eggs, from Gina Marie Lindsay Hall. This was completed with help from contractors Herzog Glass, and Artech, in addition to a wide range of Port departments and partners.



Cleaning and Data Management: Ralph Helmick and Stuart Schechter's *Landing*

Once the star of the central terminal, *Landing* had to be removed due to both safety concerns as well as an inability to clean the piece in its old configuration. Due to the presence of nearby kitchen vents, each individual metal object had a thick coat of grease and grey dust. One of Pete's first tasks was cleaning, categorizing, and packing over **2,000+ individual objects** in the hopes that *Landing* can one day be re-installed in a new configuration.



Shout Outs

Pete would like to thank: Ryan Grenier and the PCS night crew, Rocio Trujillo, Joel Astley, Electrical Shop for their quick work, ORAT especially Nick Terrana and Andy Ramsey, Sabin Mudaliar, Boston Barricade and Moe Qatmish, Brian Dickinson for his ongoing support and collaboration, Grace Choi, Anastasia Gibson, Herzog Glass, and art handling contractor Artech for their expertise and efficient work.

Annabelle would like to thank: Heather Karch, Greg Gobat and Regan Greenhill, your expertise and teamwork have been invaluable on multiple CIP projects. The Public Art team is grateful to have such talented individuals by our side!

Also extending deepest gratitude to Liz Willig, Marilynn Montenegro, Leila Gonzalez-Rigatto, and Angela Peterson for your exceptional work in creating contracts for the 27 artists recently selected. Your efficiency and attention to detail have been invaluable in ensuring smooth and organized collaborations. We truly appreciate your outstanding support during this busy (but exciting) period.

In support of one of the busiest project years in the Port of Seattle's public art program history, **Tommy Gregory would like to thank:** The Port-Wide Arts and Culture Board for their

dedication and ongoing support on these cultural projects. The board consists of two commissioners, Commissioner Fred Felleman, Commissioner Sam Cho, with three divisions, represented with designees, Kyra Lise, Cassie Fritz, and Arif Ghouse, and our professional public members of Lara Behnert, Fulgencio Lazo, Jim Suehiro and newly appointed member Tamar Benzikry. The sky is not the limit with this group, we are looking forward to amazing things to close out '23.

Familiar Face, New Title

It is an honor to announce that **Christine Lee** will be joining the Public Art Program as a **contract**

specialist starting today! Her 30 years at the Port, background in art, and contagious enthusiasm make her an ideal fit for the work ahead.

Please join the Public Art Program in welcoming Christine into her new position!



Your Public Art Team is:

Tommy Gregory, *Public Art Program Sr. Manager*

Annabelle Goavec, *Public Art Program Coordinator*

Pete Fleming, *Public Art Technician*

Christine Lee, *Contract Specialist*

Newsletter written by Daphne Maiden, *College Intern*

Let us know how we did, and what you would like to see next!

All photos above were taken by the Public Art team or sourced from artist's official websites, unless otherwise noted



Answers to Seattle landmark and public art quiz:

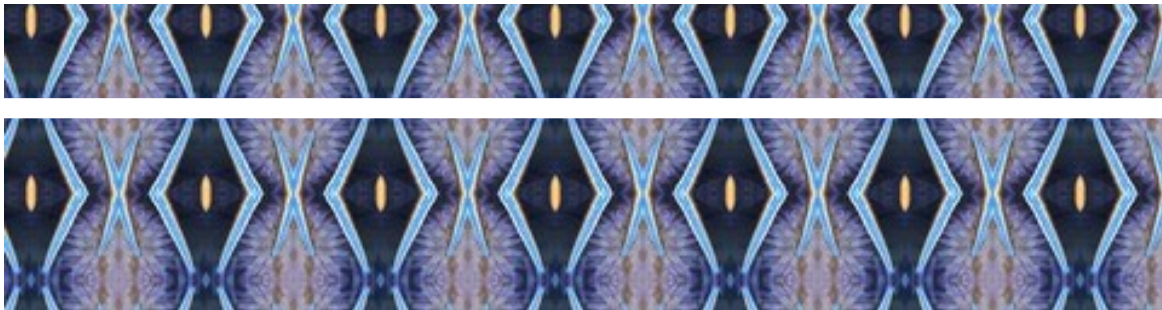
- (1) **Rachel (the Pig)** by Georgia Gerber, Pike Place Market (2) **The Space Needle**, Seattle Center
(3) **Black Sun** by Isamu Noguchi, Volunteer Park (4) **The Eagle** by Alexander Calder, Olympic Sculpture Park
(5) **Hammering Man** by Jonathan Borofsky, Seattle Art Museum (6) **Waiting for the Interurban** by Richard Beyer, Fremont Neighborhood

October 2023

Port of Seattle's Public Art Quarterly

*In this issue: New and Upcoming, A Season of Receptions, Country-Wide
Conversations*

New and Upcoming



Above: A still from [Emily Tanner-McLean](#)'s *Points of Origin, Tides*. To be installed in 2023. Video work.



In case you missed it:

The Port's first commissioned mural had its reception at the Fishermen's Fall Festival on September 30th. The turnout of the festival was amazing, the mural looks great, and the public art team can't help but see it as a good omen for future Maritime projects.

(I also heard that [Dozfy's](#) pet portraits were extremely popular. To the right is Kai the husky and Chaussette the golden retriever.)



Artist Chosen for FT Site Improvement Project

[Mary Coss](#) was recently selected for the FT Site Improvement Project. Coss



creates socially aware, interdisciplinary work. She joins Ty Juvinel and Shogo Ota in FT's list of upcoming artists.

Get a taste of her work this season:

Surge Oct 14, 2023 – Feb 17, 2024

Museum of Northwest Art

Barbara Earl Thomas and Marita Dingus enter the SEA collection.

This Tuesday, a panel selected multiple works to be purchased from two hometown heroes. It's too soon to reveal the pieces, but we are eagerly awaiting the chance to show them off to you all! Learn about them below.



Barbara Earl Thomas

A skilled painter who now builds tension-filled narratives through papercuts and prints, placing silhouetted figures in social and political landscapes, she pulls from mythology and history to create a contemporary visual narrative that challenges the stories we tell as Americans about who we are. Thomas is also known for her large-scale installations that use light as the animating force and invites her viewers to step inside her world of illuminated scenography.



Marita Dingus

"I consider myself an African-American Feminist and environmental artist. My approach to producing art is environmentally and politically infused: neither waste humanity nor the gifts of nature. I am primarily a mixed media sculptor who uses discarded materials. My art draws upon relics from the African Diaspora. The discarded materials represent how people of African descent were used during the institution of slavery and colonialism then discarded, but who found ways to repurpose themselves and thrive in a hostile world..."

A Season of Receptions

***In Between* by Morgan
Madison**

@Pier 69, 4PM-6PM

**Happening Tomorrow!
Thursday, October 19th**

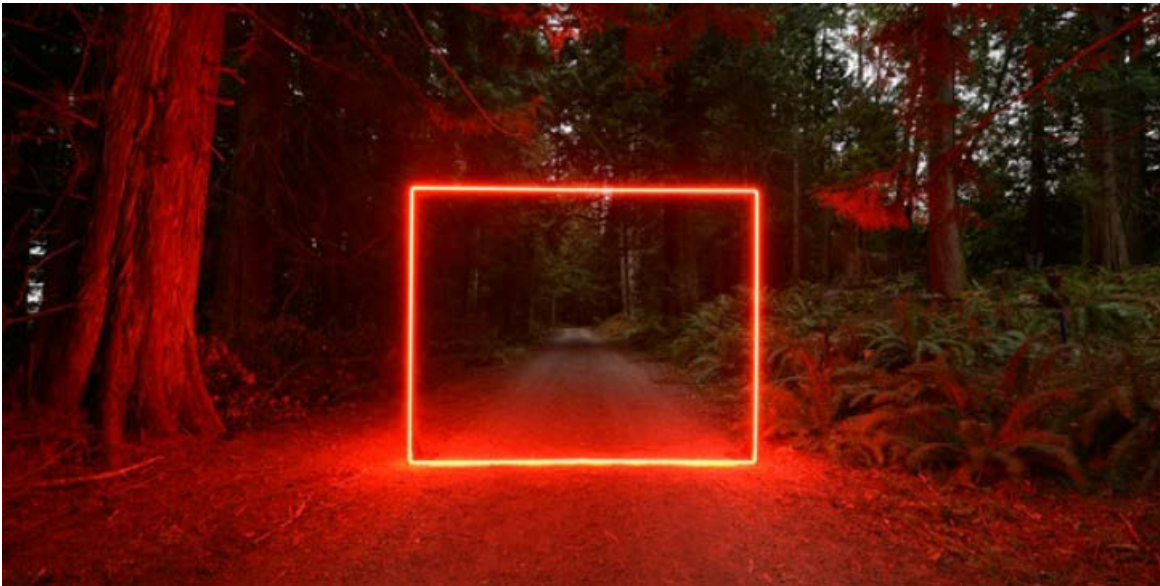
Join us Thursday afternoon for a celebration of [Morgan Madison's](#) current solo exhibition, ***In Between***. Catch a glimpse of these textural, multimedia sculptures and hear the artist talk about his work before they leave for good!

"I am compelled by curiosity. My work inhabits the realm where man-made constructs, the architecture of nature, and imagination overlap; it is a celebration of our fleeting existence in this physical realm."

"I am inspired by the forms, textures, colors and structures that comprise our environment, specifically I am seeking those exceptional elements that resonate amongst the background noise so that I might tap into their potential to animate my work".

"This work is serious play."



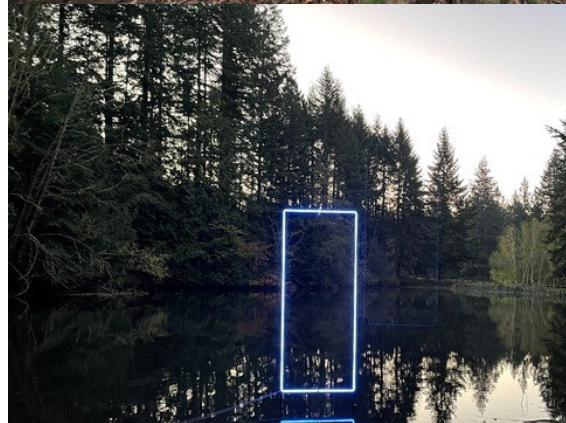


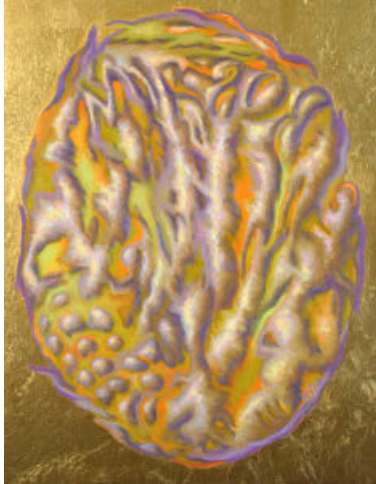
One Night Only!
Neon Work by
Kelsey Fernkopf

@The SEA Cell Phone Lot
(On the Hill)

November 4th, 5PM-9PM

Neon artist [Kelsey Fernkopf](#) is gracing a certain [grassy hill](#) with an atmospheric neon installation. This event is one night only, so make sure to add it to your calendar if you suffer from FOMO. Due to the nature of the outside venue, we recommend bundling up to anticipate the cold November evening, and maybe packing a thermos of a seasonally appropriate drink, just in case.





New Icons

**A solo exhibition
by Grace Athena
Flott @Pier 69**

Reception:

December 19th,
4PM-6PM



Supported by a Hope Corps grant from the Seattle Office of Arts & Culture, ***New Icons*** celebrates the lived experience of folks with visible differences, specifically burn survivors. Remixing medieval and Renaissance iconography motifs to highlight contemporary body politics, [Flott](#) presents realist portraits of her underrepresented community alongside abstract works depicting patterns printed directly from scarred skin. Paramount to her process is Flott's conscientious exchange with each subject, a collaboration meant to counteract common experiences for those with visible scarring: toxic staring, comments, or outright harassment. While each subject is painted in meticulous life-size detail, Flott combines scar prints into the portraiture as well as unique works of pure pattern and color that, together, weave the stories of each individual into larger narratives of body liberation, health, beauty redefined.

New Icons will be on view from
December 1st - February 29th



Country-Wide Conversations

REFRACT 2023



Refract is Seattle's premier glass festival, a one-of-a-kind, yearly event celebrating the hundreds of glass artists working in this material who live in the Pacific Northwest. Organized by Chihuly Garden and Glass and Visit Seattle, each October Refract brings together hundreds of arts organizations and artists to host events throughout the region.



To celebrate another year of local glass, the public art program showcased some of the glass artists we have under contract (Left: Anna Mlasowsky, Bottom: Morgan Madison) and offered public tours. Check out the temporary cases on ticketing or at the SEA Underground A Concourse station to see the rest of the pieces on display.



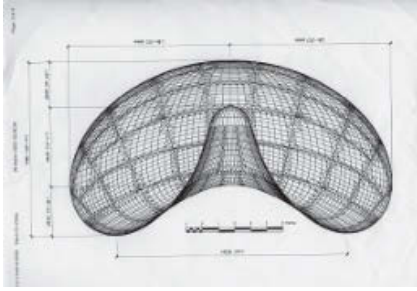
ARTS IN THE AIRPORT WORKSHOP

This month Tommy, Annabelle, and Arif represent SEA at this year's **AAAE: Arts in the Airport** conference. The writing on the wall says SEA will be leading the country's airports in public art projects in the coming years. The conference was a great chance to talk to specialists in the niche field of aviation art, and we hope to



Pop Quiz!

streamline our processes
with the information gained.



To the left is a diagram of a famous public art installation. Inspired by liquid mercury, the artist's goal was to make a form that could reflect and distort the surrounding metropolitan skyline. The legume-shaped installation is made of 110 tons of stainless steel, polished to a seamless, mirror finish. Can you name this famous piece?

Vision still cloudy? Check your answer below.

Your Public Art Program is:

Tommy Gregory, Annabelle Goavec, Pete Fleming,
Christine Lee, and Daphne Maiden

Newsletter written by Daphne Maiden, College Intern

*All photos above were taken by the Public Art team
or sourced from artist's official websites, unless
otherwise noted*



Answer: Cloud Gate by Anish Kapoor, located in downtown Chicago (also known as "The Chicago Bean").