



Port of Seattle Quarterly Newsletter

*In this issue: Passing on the
Torch, Bold Bollards, Caring for the Collection, A Quilt of Color,
Residency at the Museum of Glass*

Introduction

Hi everyone, my name is Tilly Word, and I am excited to introduce myself as the new college intern for the Public Art Program. I will be taking over the quarterly newsletter, I am honored to carry on the tradition started by Daphne! We have tons of exciting new projects on the horizon, that I'm stoked to share with you all! Together, we will explore new art pieces, celebrate the achievements of the Art Program, and continue our work to build a more connected and colorful community.

Bold Bollards



A Color for Every Destination



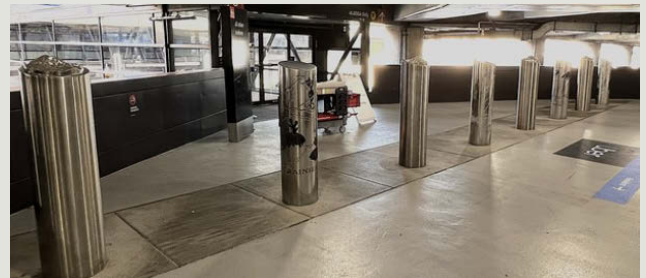
SEA Airport travelers are in for a surprise at Skybridge One, where artist [KT Hancock](#) latest installation, a striking array of jumbo lipsticks, brings a touch of vibrancy to the terminal.

These oversized lipsticks, stand proudly in varying shades from pungent red to a rich purple, merging the worlds of art and infrastructure. The installation reimagines the function of bollards, turning them into unexpected sculptural elements that delight both travelers and art enthusiasts alike. If you'd like to learn, more watch [this](#) interview of KT Hancock and Art Team!

Next time you're crossing Skybridge 6, don't forget to take a look and maybe snap a photo with these larger-than-life lipsticks!

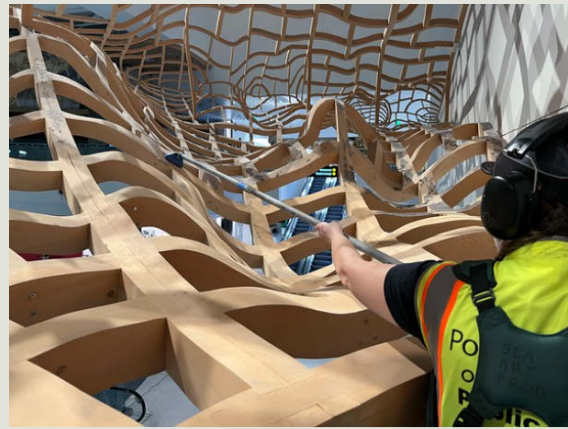
A Trail Through the Sky

Travelers at Skybridge 6 will now experience a stunning tribute to Washington's iconic Mount Rainier and its Wonderland Trail, thanks to artists **Kyle Olsen** and [Sandra Williams](#). Every other bollard is capped with a miniature Mount Rainier, offering a sculptural nod to the region's beloved peak. The alternating bollards feature intricately etched maps of the Wonderland Trail, inviting viewers to trace the legendary 93-mile trek that encircles the mountain. This thoughtful blend of cartography and sculpture turns a functional airport feature into a moment of discovery, celebrating the flighty temptress, adventure.



Caring for the Collection: The Unsung Heroes of SEA's Public Art

Behind every stunning art piece at SEA Airport is a dedicated team ensuring its longevity and brilliance. **Pete Fleming** and **Sarah Crouse** are the caretakers of the airport's public art collection, spending countless hours maintaining, restoring, and preserving these works for travelers to enjoy.



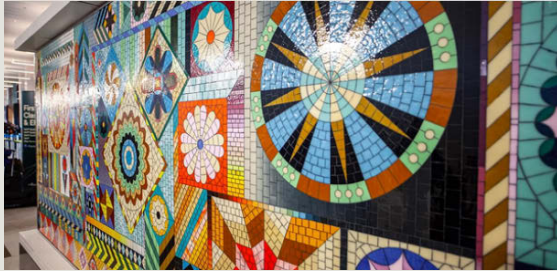
Meticulously cleaning John Grade's *Boundary* (above), to carefully repairing Krista's Birnbaum's *Canopy* (left), their work ensures that SEA's public art remains a vibrant and integral part of the airport experience. Whether it's polishing sculptures, fixing wear and tear, or giving delicate pieces the attention they need, Pete and Sarah's dedication keeps the collection looking its best. So next time you admire the airport's art, remember the unseen hands that keep it all in top shape!

A Quilt of Color

If you've passed through the North Main Terminal, recently, you might have noticed a vibrant new mosaic that wraps the baggage enclosure. [Sarah More's](#) latest installation is a collaboration with [Tieton Mosaic](#), celebrating travel and the Pacific



Northwest. From a young age More was influenced by her mother's handmade quilts, her piece *On A Clear Day, You Can See Forever* draws on



On A Clear Day, You Can See Forever

traditional quilting patterns. More gives homage to our beautiful city, from shooting stars and a mariner's compass to the city's flower, the dahlia. More uses a variety of pale blues and greens, a nod to Alaska Airlines. Take a moment to witness the intricacy and craft that combines culture and adventure for every traveler to enjoy.

Fumi Amano's Residency at the Museum of Glass



Fumi Amano

The [Museum of Glass](#) recently, hosted [Fumi Amano](#), you may have spotted her hard at work in the hot shop. Amano is a Seattle-based glass artist

Since then, she has participated in numerous exhibits and now serves as the Studio Manager at Pratt Fine Arts Center in Seattle.

While we visited, Amano gave us a behind-the-scenes look at the prototyping process, demonstrating the intricate techniques used to create a rondel's swirling, layered patterns. The craftsmanship required to achieve this level of detail is impressive, and watching the team at work was a rare glimpse into the precision of glassmaking.

Once completed these 32 uniquely patterned rondels will become part of SEA's growing public art collection, so

originally from Aichi prefecture in Japan, she has just completed her residency, where she is collaborated with a team of glassblowing artists to create a series of rondels for her upcoming sculptural installation in SEA's C Concourse.

Amano's work is deeply rooted in storytelling and performance, using glass as a medium to explore themes of communication, connection, and distance. She first came to the U.S. in 2009 to study at Pilchuck Glass School before earning her MFA from Virginia Commonwealth University.

keep an eye out for Amano's work, it is coming soon!



Your Public Art Program is:
Tommy Gregory, Annabelle Goavec, Pete Fleming,
Christine Lee, and Tilly Word

Newsletter written by Tilly Word

All photos above were taken by the Public Art team or sourced from artists' official websites,
unless otherwise noted

