



# Port of Seattle Diversity in Contracting

## PortGen First Look: East Waterway Cleanup Design

Kelvin Dankwa, [dankwa.k@portseattle.org](mailto:dankwa.k@portseattle.org)  
Community Engagement & Training Program Specialist

Program to begin at 3:05PM  
September 11, 2025



## **Port of Seattle Diversity in Contracting**

## **Procurement at the Port**

## **Upcoming events**

## **Projects**

- East Waterway Cleanup

## **Networking**

- Q&A
- Introductions (Company, Industry, Prime or Sub)

## **Purpose:**

### Resolution 3836 (8e. Resolution)

Advance equity and address contracting disparities by increasing the utilization of Women and Minority Business Enterprises, and other disadvantaged firms.

## **2025-2029 Five-year Policy Benchmarks:**

- ☐ Increase the amount of Port spend on WMBE contracts to 16%
- ☐ Increase the number of WMBE firms doing business with the Port to 500

## Register Your Business on VendorConnect

All new, active, and pending award procurements are found here!

VendorConnect is the Port portal that allows you to:

1. **See** Port opportunities
2. **Be Seen** by Port buyers

## **To be Notified of Project Advertisements**

- Register on VendorConnect: [VendorConnect User Guide](#)
- Sign up for our [Diversity in Contracting mailing list](#)

## **Once Advertised, First Steps to Pursue a Posted Project**

- Reach out to Project Plan holders on VendorConnect
- Become a Plan Holder on VendorConnect
- Attend informational/pre-bid meetings

# Regional Contracting Forum – Next Week!

## 2025 Regional Contracting Forum

Date: Wednesday, September 17<sup>th</sup>

Time: 8:00AM – 3:00PM

Location: Muckleshoot Casino Resort  
(2402 Auburn Way S, Auburn, WA)

Join us for the 2025 Regional Contracting Forum! Attendees have the opportunity to meet government contracting representatives and network with contractors, consultants, and suppliers all at one event.



[Register Here](#)

# Advanced PortGen Kick-Off!



[Click here to see the full  
Advanced PortGen series](#)

Advanced PortGen 2025 is a training series designed for small, minority, and women-owned businesses wanting to learn how to be successful with government contracting.

Each 1-hour webinar focuses on topics important to Port of Seattle vendors. Sessions are led by industry experts and valuable resource partners.

# Advanced PortGen Trainings

Online Trainings	Date	Time	Industry	Content	Registration Link
You won! Now what?	9/24	9am-10am	Construction	Checklist for Job Order Contract (JOC) subcontractors	<a href="#">Sign Up</a>
Prevailing Wage Compliance	10/1	9am-10am	Construction	How to set yourself up well with compliance requirements	<a href="#">Sign Up</a>
Indirect Cost Rates	10/8	9am- 10am	Architecture & Engineering	Learn how rates are determined and how to include appropriate rates in your proposals	<a href="#">Sign Up</a>
Positioning Your Firm to Work with the Port	10/15	9am-10am	All	Use VendorConnect and Public Disclosure Requests (PDRs) to your advantage for market research	<a href="#">Sign Up</a>
Bonding Basics for Small Businesses	10/22	9am-10am	Construction	Understand types of bonds and why they are needed	<a href="#">Sign Up</a>
Advanced Bonding Strategies for Your Small Business	10/29	9am-10am	Construction	Increase your bond limits or lower the cost of your bonds	<a href="#">Sign Up</a>
Construction Contracting at the Port of Seattle	11/5	9am-10am	Construction	What to consider and how to prepare for projects with Project Labor Agreements and badging requirements	<a href="#">Sign Up</a>

## **PortGen Connects: Maritime Industry Day**

Date: Wednesday, October 8<sup>th</sup>

Time: 1:00PM – 4:00PM

Location: Pier 69  
(2711 Alaskan Way, Seattle, WA)

The Port of Seattle Maritime Division offers expansive opportunities for WMBEs and small businesses, particularly those in the architecture & engineering, and the construction trades! If you're interested in learning about the Maritime industry, future solicitations, get tips on how to pursue Port work, and connect with Port project managers, primes, and other WMBEs, register now to attend the event!

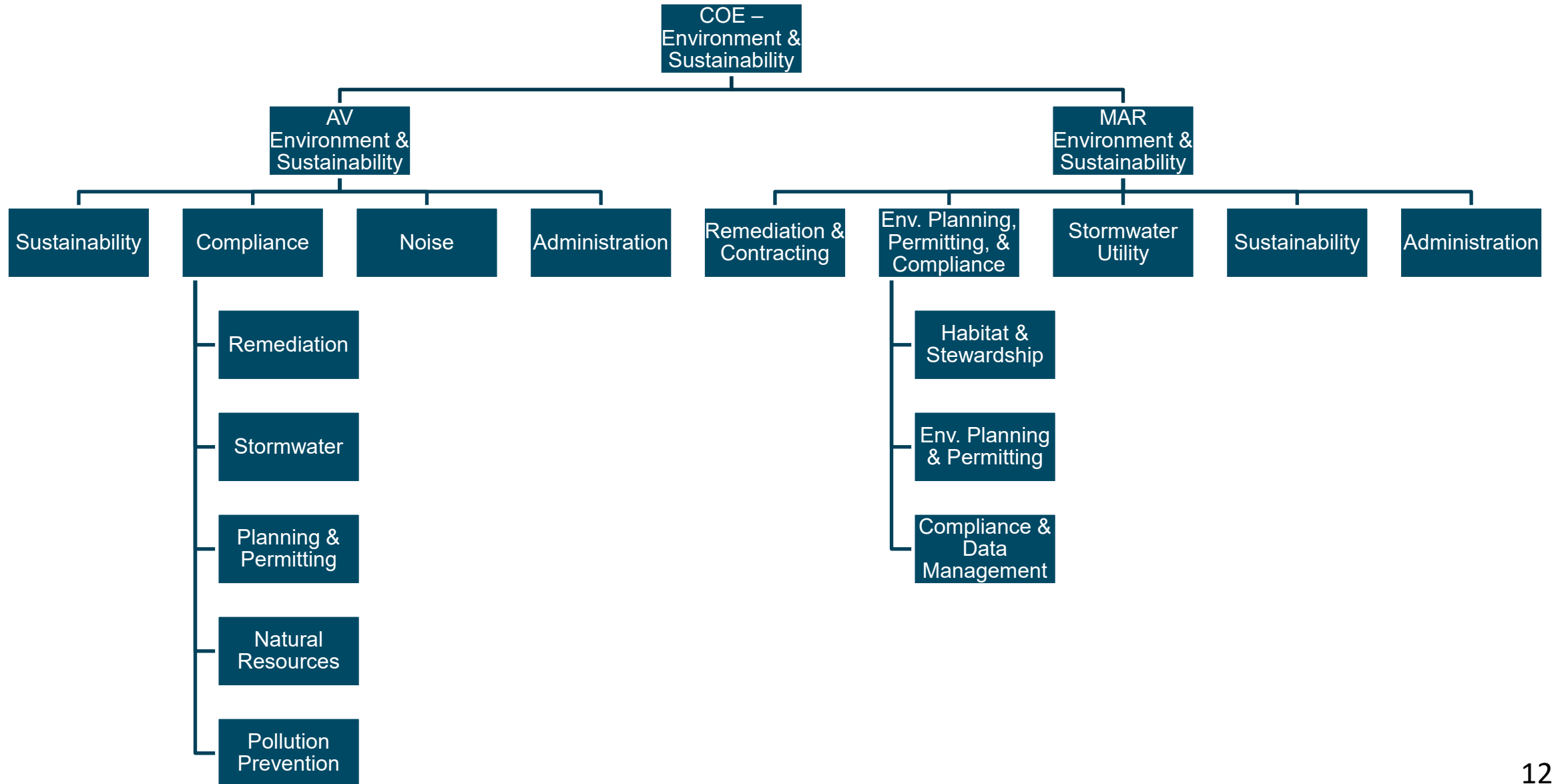


[Register Here](#)

Project Name	Design Cost Estimate	WMBE Goal	Advertise Date	Presenters
East Waterway Cleanup Design	\$15 - 20 Million	15%	Oct/Nov 2025	Brick Spangler & Tim Leonard

# ENVIRONMENT AND SUSTAINABILITY AT THE PORT

# Environment & Sustainability Overview



# Maritime Environment & Sustainability Priorities



- Soil & Sediment Cleanup
- Solid & Hazardous Waste Management
- Habitat Restoration & Stewardship
- Sustainable Shoreline Program
- Resiliency Planning
- Best Management Practices (BMPs)



- Pollution Source Control
- Stormwater Management
- Underwater Noise Control
- Ocean Acidification
- BMPs



- Maritime Decarbonization
- Sustainable Maritime Fuels
- Greenhouse Gas Reduction
- Clean Transportation
- Building Energy Efficiency
- Sustainable Project Design
- Shore Power



- Engagement & Information Sharing
- Shoreline Access & Parks
- Environmental Justice
- Human Health
- Green Jobs
- Equity

# Maritime Remediation (Cleanup) & Contracting Team



**Joanna Florer**  
Sr. Manager



**Roy Kuroiwa**  
Sr. Env. Program  
Manager



**Joy Dunay**  
Sr. Env. Program  
Manager



**Brick Spangler**  
Sr. Env. Program  
Manager



**Jalyn Buckley**  
Env. Management  
Specialist



**Kimberly Wood**  
Contract Specialist

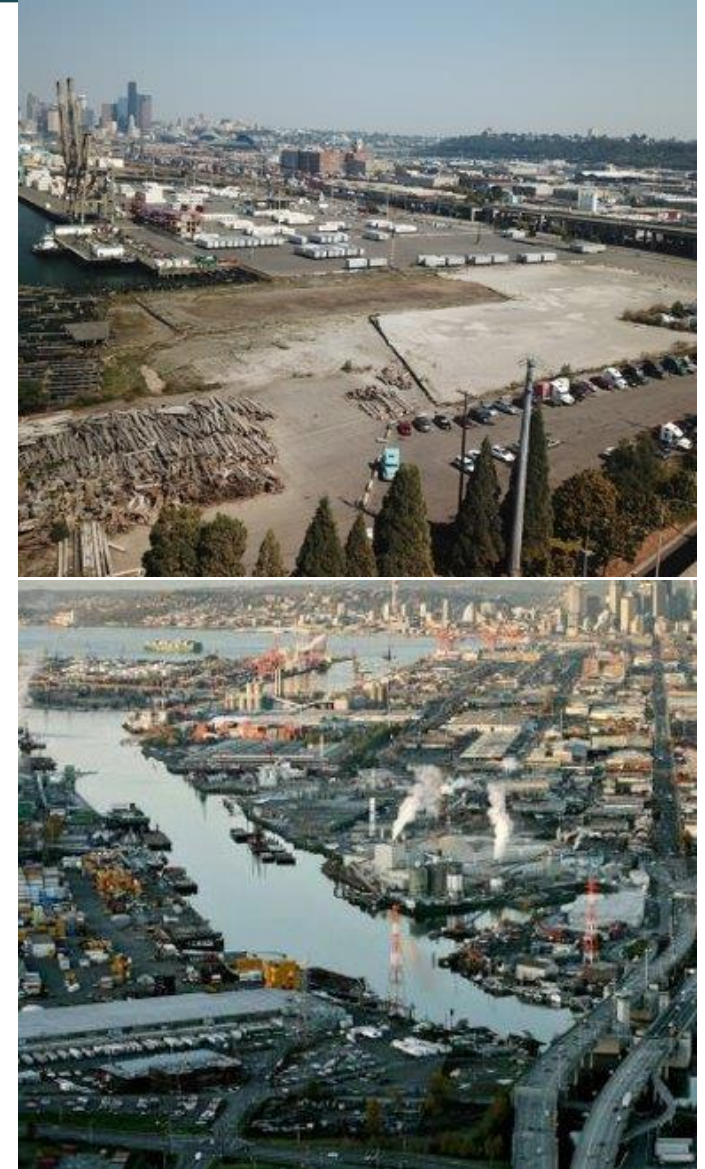


**Persia Duckworth**  
Contract Specialist



# Maritime Remediation Team Priorities

- Protection of human health and the environment from legacy toxics
- State and federal soil, groundwater, and sediment cleanup requirements
- Restore properties for highest/best use through cleanup
- Recover costs through grants, insurance, responsible parties
- Due diligence on potential property acquisitions
- Provide construction support on contaminated sites
- Participate in meaningful community engagement
- Support policy development and partnerships
- Green/innovative remediation technologies



# East Waterway Cleanup

An aerial photograph of the Port of Seattle's East Waterway. The image shows a wide channel of water flanked by industrial docks. On the left, a large cargo ship is docked, surrounded by numerous colorful shipping containers stacked in neat rows. On the right, another dock area is visible with more containers and industrial structures. In the background, the city skyline of Seattle is visible across the water.

**Brick Spangler**

Sr. Environmental Program  
Manager

Maritime Environment and  
Sustainability – Remediation

[spangler.b@portseattle.org](mailto:spangler.b@portseattle.org)

**Tim Leonard**

Capital Project Manager

Waterfront Project Management

[leonard.t@portseattle.org](mailto:leonard.t@portseattle.org)

# Project Site Location



# **Project Overview**

The East Waterway cleanup project will involve removal of contaminated sediment, that poses an unacceptable risk to human health and the environment, within 121 acres of the East Waterway Superfund Site. The first step will be the completion of the Remedial Design required per an Order to be issued by the EPA.

# Primary Parties

- **Port of Seattle** – the lead contracting agency for the cleanup
- **East Waterway Group:** Port of Seattle, City of Seattle, King County will implement the cleanup with oversight from EPA and will share costs
- **EPA** – regulating agency

# Stakeholders

- **Muckleshoot and Suquamish Tribes** – usual and accustomed fishing/harvesting area with treaty rights and is consulted by EPA
- **Washington State Department of Natural Resources (DNR)** – manager of state-owned aquatic lands in EW
- **Washington State Department of Ecology (Ecology)** – provides input on state cleanup rules and source control
- **Non-Governmental Organizations (NGO)** - Duwamish River Community Coalition (DRCC) and other NGOs have been tracking and commented on the cleanup process

# **East Waterway Cleanup Design**

**Estimated Design Cost: \$15-20 million**

**WMBE Goal: 15%**

**Project Delivery Method: Design-Bid-Build**

# Preliminary Estimated Schedule

<u>Activity</u>	<u>Timing</u>
<b>EPA issuance of design order</b>	<b>Oct 1, 2025</b>
<b>Design (up to 5 years)</b>	<b>2026-2031</b>
<b>Cleanup construction (7 – 10 years)</b>	<b>2031-2041</b>
<b>Long-term monitoring</b>	<b>2041 onward</b>

# Project Design Scope

- **Further data gathering and analysis:** collect additional data on contamination and site conditions to refine the scope of cleanup.
- **Detailed engineering design:** develop comprehensive plans and specifications for the selected remedial technologies, including dredging, capping, in-situ treatment, and enhanced natural recovery, according to the Interim Record of Decision.
- **Specification of cleanup areas:** delineate precise areas that require cleanup based on established remedial action levels.

## Project Design Scope (cont'd)

- **Development of construction plans:** create detailed construction plans, including sequence of operations, equipment requirements, and schedules, considering factors like in-water work windows to protect sensitive species like migrating salmon.
- **Waste management planning:** determine disposal methods for dredged and treated contaminated materials.
- **Long-term monitoring and maintenance plans:** establish protocols for post-remediation monitoring to ensure effectiveness and long-term protectiveness of the remedy and maintaining remediation infrastructure.

# Components / Trades of Interest (NAICS)

- **Environmental Consulting Services – 541620**
- **Testing Laboratories and Services – 541380**
- **Engineering Services – 541330**

# Design Team Selection Criteria

Prospective design teams will be evaluated on:

- Qualifications of firms and key project personnel
  - Technical expertise
  - Project Experience
- Project approach
- Ability to meet WMBE goal

# Questions?



# NETWORKING

Your Name

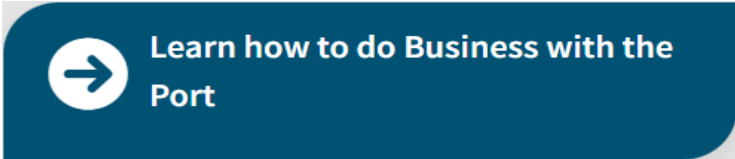
Business Name

Industry

Business Certifications

Prime or Sub

# Where can I find this presentation?

1. Presentation and list of registrants will be sent out after this event.
2. [Diversity in Contracting website](#):
  - Click the  flag.
  - Scroll Down to view “Past PortGen Events & Trainings with Materials” and click “Presentation” or “Registrants” for each PortGen event.
  - Scroll to the bottom of the page to view the [Diversity in Contracting Event Archive](#)

# THANK YOU FOR ATTENDING



## POST-EVENT SURVEY

