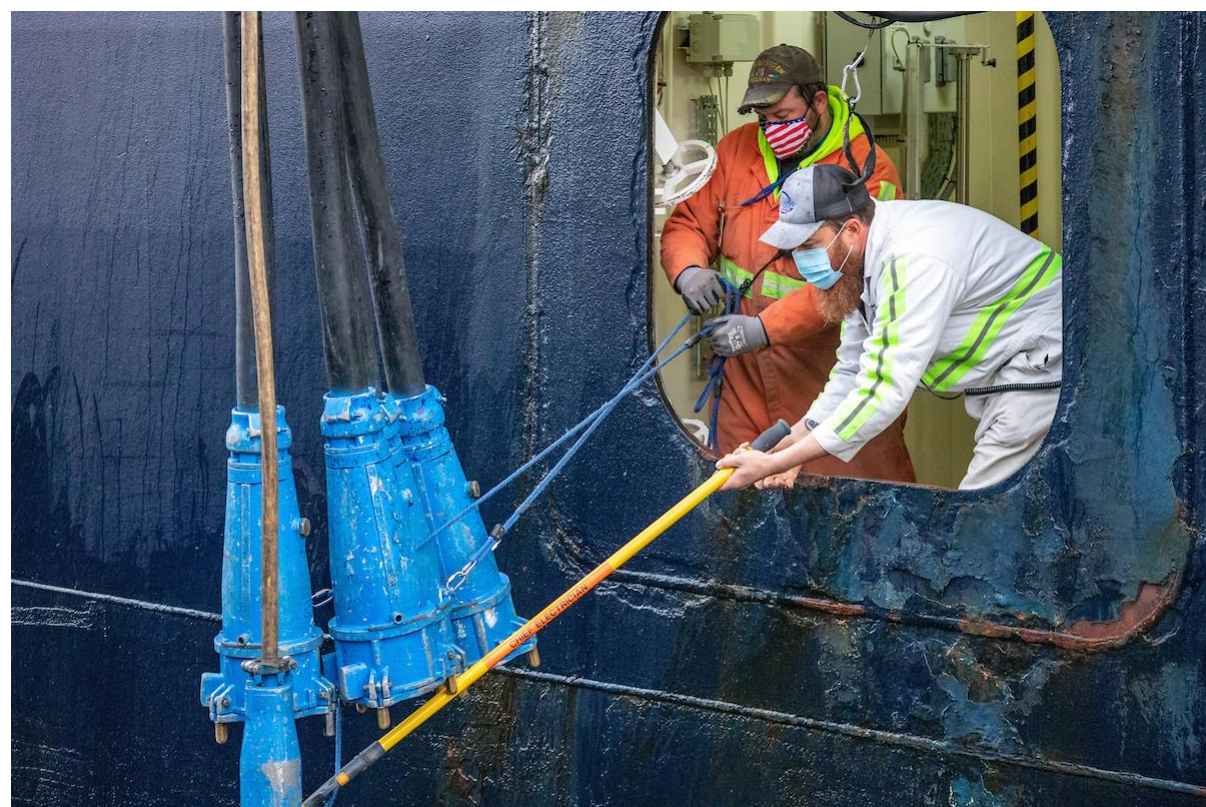


# PORTGEN CONNECTS MAINTENANCE GOODS AND SERVICES EVENT

October 16, 2025

Port of Seattle®





# Intro and Agenda

## **I. Presentation**

- Diversity in Contracting
- Aviation Maintenance
- Marine Maintenance
- Port Construction Services
- VendorConnect

## **II. Q&A**

## **III. Networking**

## **II. Tours**

# Diversity in Contracting

Emily Ho, Diversity in Contracting Program Manager



## Purpose

Advance equity and address contracting disparities by increasing the utilization of Women Minority Business Enterprises and other disadvantaged firms

## 5-year Benchmarks

- ❑ WMBE firms doing business with the Port: 400 annually
- ❑ Increase to 16% the amount of spend on WMBE contracts

## Programs

- WMBE Program
- DBE Program
- Outreach and Training



# Port Teams Here Today



Aviation Maintenance



Marine Maintenance



Port Construction Services



# Aviation Maintenance Overview

Tae Stacy, Aviation Maintenance Logistics Manager

- Dedicated to the upkeep and maintenance of airport and surrounding support buildings
- Largest Department within the Port; 24 / 7 / 365 operation
- Responsible for maintaining the Port's:
  - Multiple mission critical systems
  - Facilities
  - Equipment
  - Fleet (including Bus Maintenance and seventeen (17) functional crafts)
- Manages:
  - Capital and Expense Projects
  - On-Call Maintenance Contracts, such as escalator/elevator, baggage handling

# Aviation Maintenance Purchasing Needs

## Goods

- Auto
- Carpentry/building
- Electrical
- Electronic systems
- Lighting
- Lubricants
- Mechanical
- Paint
- Plumbing supplies
- PPE (safety glasses, vests, gloves)
- Tools
- Uniforms (logo'd apparel)

## Services

- Collision/autobody repair
- HVAC
- Plumbing
- Upholstery
- Technical training (e.g. lift operations)





# Aviation Maintenance Small Works Construction

Ian Arlow, AV Maintenance Small Works Project Manager

## Typical Contracts Used:

- Electrical
- Mechanical
- Landscape Maintenance
- General Contractor
- Glass & Glazing
- Roofing & Building Envelope
- Wall & Floor Coverings





# Marine Maintenance Overview

Garrett Terwilliger, Marine Maintenance Logistics Manager

- Responsible for maintenance and upkeep of Maritime, Real Estate and Park properties. This includes:
  - Class A office space
  - Piers & Wharfs
  - Cruise & Container Terminals
  - Marinas (both commercial fishing and recreational boating)
  - Shoreline Access & Parks on the Duwamish River and Elliot Bay
- Fourteen Crafts – sixteen disciplines
- Maritime Fleet: Boats, Cars, Light Trucks, Medium & Heavy Duty Trucks, Construction Equipment, Landscaping Equipment, etc.
- Storm Water Utility



# Marine Maintenance Purchasing Needs

## Goods

- Auto Parts & Accessories
- Carpentry / Building Supplies
- Electrical, Data & Lighting
- HVAC
- Mechanical / Plumbing
- Millwright / Pile Buck
- Office Supplies
- Paint & Sundries
- PPE (safety glasses, vests, gloves)
- Sheet Metal
- Sign Making
- Sprinkler / Fire Safety
- Tools
- Uniforms (logo'd apparel)

## Services

- Collision / Autobody Repair
- Auto Glass
- Leak Detection
- Biohazard Cleanup



# Port Construction Services (PCS) Overview

Chris Clemetson, PCS Business Operations Assistant Director

- PCS supports the Port by being positioned to start work immediately and accomplishing small projects (under \$2 million) quickly and cost effectively with in house resources, unit price contracts, and/or Job Order Contracts
- PCS relies on the skills and aptitudes of its outside consultants, contractors and/or field crews to assist us in the completion of our projects.
- On Call Contracts are in place with PCS to provide contractors that can respond to project needs as soon as possible.





# Port Construction Services Needs

## Goods & Services

- Maintenance Materials
  - Screws, nails, nut, and bolts
  - Cement mix & mortar
  - Lumber and drywall
  - Blades and drill bits
- Electrical Systems
- Mechanical Equipment
- Landscaping Supplies
- PPE (safety glasses, vests, gloves)
- Tools
- Uniforms
- Equipment Rentals





# PCS Construction – Unit Price Contracts

## Typical Contracts Used

ASBESTOS ABATEMENT

ELECTRICAL

TELECOMMUNICATIONS

MECHANICAL (HVAC/PLUMBING/CONTROLS)

FIRE PROTECTION

ASPHALT PAVING & ROAD STRIPING

CRANE SERVICES

DOCK & PILING

FLOOR COVERINGS

FENCE ERECTION

GENERAL CONTRACTOR

\*SPECIALTY WORK\*





# Welcome to the Port of Seattle VendorConnect

## Important! Port Contractor/Consultant Vaccine Requirement

Due to the everchanging COVID-19 situation and the healthcare professional and state guidance provided, all public gatherings, such as pre-bid meetings and bid openings will be held virtually. This information will be provided in more detail as it applies to the particular requirement and interested vendors should monitor VendorConnect closely for changes.

Port of Seattle VendorConnect provides procurement and contract information for construction, consulting, and goods and services. This is also the one stop location for registering to be on the following rosters: small works (construction less than \$300,000), consulting services, and goods and services.

To begin, you must register yourself and then find or add your business. If you were in our old system, and this is your first time logging in you must recreate your login account. To do this, click the "REGISTER/LOGIN" button below, then the "Sign up now" link on the login screen.

To begin, you must register yourself and then find or add your business. If you were in our old system, and this is your first time logging in you must recreate your login account. To do this, click the "REGISTER/LOGIN" button below, then the "Sign up now" link on the login screen.

[REGISTER/LOGIN](#)

You may search our solicitations, vendors, and view the event calendar as a guest.

[CURRENT AND PAST SOLICITATIONS](#)[FUTURE SOLICITATIONS](#)[SEARCH PUBLICLY VIEWABLE VENDORS](#)[VIEW EVENT CALENDAR](#)



# Vendor Connect – Tips

Maria Mayhue, Procurement Officer

Port of Seattle

VendorConnect

?

DASHBOARD > VENDOR INDEX

Vendor Index


List of publicly viewable vendors. Use the filter for more detailed searches. You must login to add your vendor to our system.

Q Search Vendors

X

SHOW FILTER

EXPORT TO EXCEL

Name ↑	Work Types 	Business Certifications (*self-identified)	NAICS
<a href="#">Diving Blerit Marine LLC</a>	Environmental, Finishes (flooring, painting), Shoreline, Marine Construction, Electrical, Finishes - Painting, Mechanical, HVAC, Plumbing, Services-Coffee Break Supplies & Services, Community Investment		
<a href="#">1 Alliance Geomatics LLC</a>		DBE, MBE, SCS, SBE	541370 - Surveying and Mapping (except Geophysical) Services
<a href="#">1 Industrial Source LLC</a>		DBE, SCS, SBE*, WBE	423320 - Brick, Stone, and Related Construction Material Merchant Wholesalers, 423610 - Electrical Apparatus and Equipment, Wiring Supplies, and Related Equipment Merchant Wholesalers, 444190 - Other Building Material Dealers
			541611 - Administrative Management and General

 Make sure you select “Facilities and Equipment Maintenance Parts and Services” from the drop-down menu as one of your work type categories



# P-Card Purchasing

Sherry Weiss, Procurement Officer

- Standard credit card transaction
  - Vendors need to accept credit card payment
- Transaction limitations
  - <\$5,000 per transaction (including shipping and tax)
  - One order can't be split into multiple purchases



# Goods and Services Procurement Methods

Method	For the purpose of purchasing	Examples
<b>P-Card</b>	Transactions valued at <\$5K (incl. taxes, shipping & fees)	Department lunch catering; maintenance supplies; promotional items; office supplies
<b>Blanket Order Contracts or "Convenience Contracts"</b>	Efficient method of acquiring small dollar items (single transaction <\$5K) for multiple transactions	Dry cleaning; printing
<b>Direct Buy</b>	One-time order for specific good or services <\$50K	Furniture; maintenance items; software; large promotional items
<b>Competitive Contract</b>	Specific good or service >\$50K	Large event catering; janitorial; software; live music



# Goods and Services Contract Types by Amount

Direct Purchase	Competitive Contracts	
	RFQ Procurements	Formal Solicitations (Invitation to Bid/Request for Proposal)
\$49,999 and under	\$50,000 to \$149,999	\$150,000 and over
Considers diverse firms	Considers diverse firms	Diversity in Contracting goal
Competition not required	Competitive selection - Purchaser typically identifies a minimum of 3 firms to submit quotes Selection typically based on lowest price	Competitive selection <ul style="list-style-type: none"> <li>• ITB – selection based on lowest price</li> <li>• RFP – selection based on best value</li> </ul>
Advertisement not required	Advertisement not required	Public advertisement required



# Upcoming Events

## 2025 Year-End Celebration and Accelerator Graduation Tuesday, December 16, 2026



This networking event will begin with a program which will include:

- Celebrating the 2025 Business Accelerator Graduating Cohort
- A preview of Port opportunities coming up in 2026
- Remarks from Port leadership
- Recognition of 2025 Port WMBE partners







# Questions?

Please fill out our post-event survey:

[tinyurl.com/fa5ctm55](https://tinyurl.com/fa5ctm55)





## Aviation Maintenance Contacts:

Tae Stacy  
Logistics Manager  
(206) 245-6265  
[Stacy.t@portseattle.org](mailto:Stacy.t@portseattle.org)

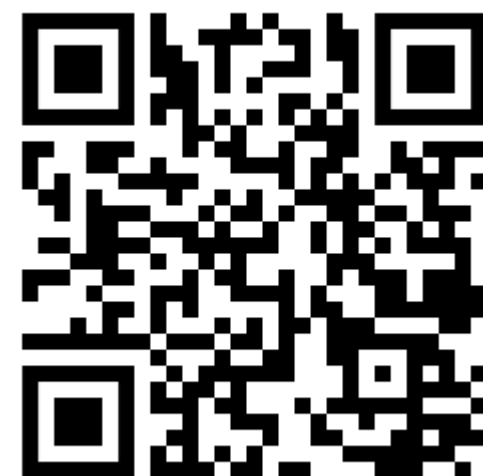
Tanaya Covey  
Logistics Assistant Manager, Distribution  
Center  
(206) 471-1683  
[Covey.t@portseattle.org](mailto:Covey.t@portseattle.org)

## Diversity in Contracting Contacts:

Emily Ho  
Outreach and Training Program Manager  
(206) 661-8080  
[Ho.e@portseattle.org](mailto:Ho.e@portseattle.org)

Kelvin Dankwa  
Outreach and Training Program Specialist  
(206) 422-2738  
[dankwa.k@portseattle.org](mailto:dankwa.k@portseattle.org)

Sign on to VendorConnect:  
[hosting.portseattle.org/sops](https://hosting.portseattle.org/sops)



For More Information go to:  
[portseattle.org/diversity](https://portseattle.org/diversity)

