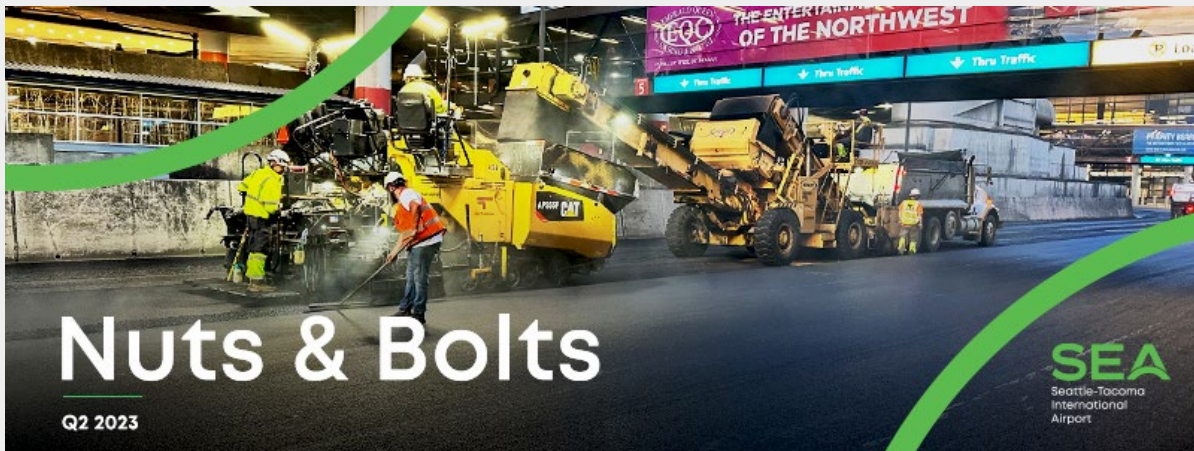


To view this email as a web page, go [here](#).



Nuts & Bolts

Q2 2023

Check out the major upgrades happening at Seattle-Tacoma International Airport (SEA)!

SEA GATEWAY PROJECT

Alaska Ticketing Lobby Getting Upgrade for Check-in Process



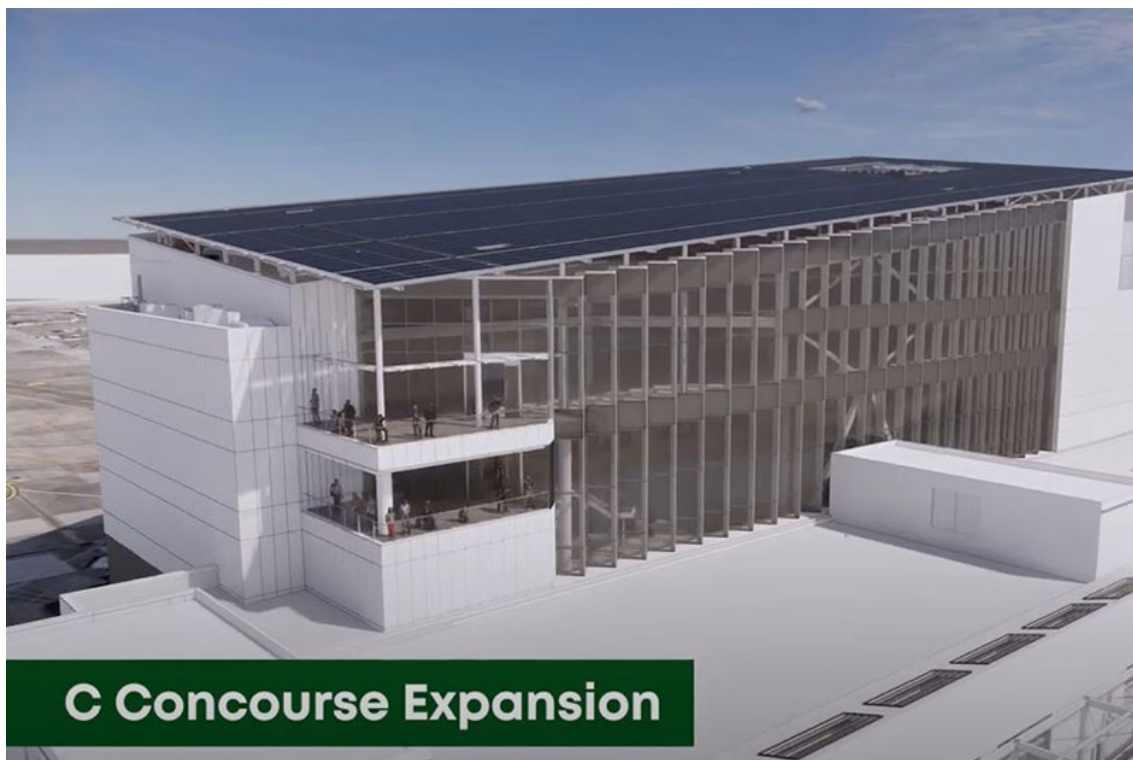
A recent milestone celebration with the Port's project team, Alaska Airlines, and Hensel Phelps, took a moment to acknowledge the construction and barricade kick off to the Alaska Ticketing Lobby. Barricades have been erected in zones six and seven on the north end of the Ticketing Level. This makes way for more space and new check-in technology for Alaska passengers. The window wall will bump out to create an easier, more efficient customer journey and check-in process. With the barricades up, new bag tag stations make it easy for travelers to print their own bag tags.

- See how Alaska is making check in better and faster in this [Checking in](#) video.
- Access ongoing [bid opportunities](#) from contractor Hensel Phelps.

[Learn what's next for this project →](#)

C CONCOURSE EXPANSION

Get a Bird's-eye View of C Concourse Expansion Project



The C Concourse Expansion project is prepping to raise the roof. Early work is already underway, and the project design is nearly complete. The design teams on this project, Miller Hull and Woods Bagot, have created an exciting new

exterior 360-degree rendering of this build-up with the four additional floors, providing a bird's-eye view of the future building. Highlights include photovoltaic panels on the roof, window glazing, and a lookout deck. Click the rendering above to get a tour of this amazing building vision.

Visit [Turner Construction](#) for open bid opportunities.

[Stay tuned for more project updates →](#)

RESTROOM RENOVATION

Phase Four All-Gender Restroom Opening in July



The Restroom Renovation Project is taking a moment this month to celebrate the grand opening of its first-ever, multi-user, all-gender restroom. This is one of the first of its kind in any airport in North America. Located on the D Concourse between Gates D1 and D2 and marked by a beautiful salon-style art wall, it has 10 private, full-door stalls, two private wheelchair accessible stalls, and one family restroom.

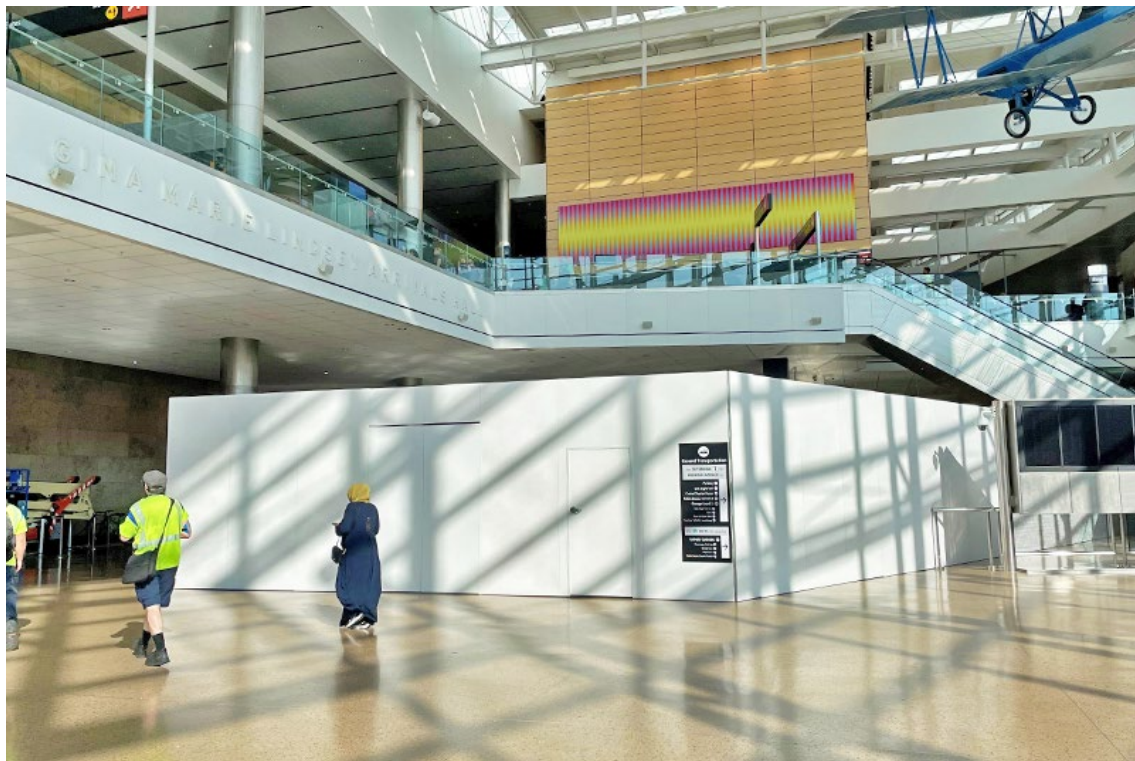
This is one of the final restrooms completed in Phase Four of the Restroom Renovation project, with only one more to be completed on the C Concourse. Phase Five — renovation of four more restrooms throughout the B, C, and D Concourses — has now begun.

- Check out this [Quick Tip](#) for a quick tour of the All-Gender Restroom
- Learn about the art wall in this [Checking in](#) video.

[Read on for more potty talk →](#)

CHECKPOINT 1 RELOCATION

Bag Carousel Demolition Makes Room for New Security Checkpoint



SEA is getting creative in finding ways to update security screening within a very limited footprint. This Checkpoint 1 Relocation project will do just what it says: build a brand-new security checkpoint and relocate it from the Ticketing Level down to the Baggage Claim Level. Moving the checkpoint down a level will provide more space for additional queuing lanes and updated technology.

The barricades are planned in three phases and are currently up around Bag Claim 1. The first phase is to demolish the carousel and art wall; the second phase will move over to the window wall and remove the boulders. The third and final phase will move back over where Bag Claim 1 was and begin building out the new security checkpoint.

[Learn more about the Checkpoint 1 Relocation project →](#)

Zero Curb Installed on Arrivals Drive



The Lower Arrivals Drive got a new look recently in the form of a zero-grade curb. This new curb creates a flat and more accessible load/unload zone on the Baggage Claim Level curbside. Next for this freshly paved drive, crews will add a fresh coat of paint striping. In addition to the new pavement and curb, all bollards have also been installed, making this Lower Arrivals Drive safer and more accessible for all.

[Read more about the Curbside Accessibility and Safety Program →](#)

Learn More About Upcoming Events



Advanced PortGen Training Workshops Sept. 12 – Oct. 17, 3 – 5 p.m.

An annual series of technical workshops that empowers WMBE firms.

Maritime Industry Day Wednesday, Sept. 27, 1 – 4 p.m.

Discover opportunities for WMBE firms to work with Port Maritime projects.

[See what other opportunities await →](#)



2023 Business Accelerator Program Sept. 13 - Nov. 17, 4 - 6 p.m. (PortGen 301)

The Port of Seattle Business Accelerator Program is a 10-week program. It focuses on giving leaders of women and minority owned businesses (WMBE) and small businesses the skills and information necessary to help their businesses grow. Learn how to take the next steps to partner with the Port of Seattle and other agencies and primes.

Limited spots available. Applications are due Tuesday, August 1.

[Click to register](#)

Port
of Seattle®

BusinessImpactNW

UPCOMING BID OPPORTUNITIES

SEA Replace Baggage Claim Devices 15 & 16
S. 188th Street Tunnel Improvements
Surface Area Management
Concourse A Building Expansion for Lounges
IWTP Expansion
Main Terminal Improvements Program

Major Construction
Major Construction
Major Construction
Major Construction
Major Construction
Major Construction

7/27/2023
8/9/2023
9/25/2023
2/25/2023
3/17/2023
8/07/2024

*all dates are subject to change

Bid Opportunities

Find Port procurements and contract information at VendorConnect.

[Go to VendorConnect](#)

Business Development

Interested in doing business at SEA Airport?

- Check out [Diversity in Contracting](#).
- Join a [PortGen](#) workshop learn about new projects and network.

Find out more about Upgrade SEA projects

CONTACT US

Have a question or a suggestion?

Email us at SEAcustomer@portseattle.org

Copyright © 2023

All rights reserved

**Port of Seattle
Commission**

Ryan Calkins
Sam Cho
Fred Felleman
Toshiko Hasegawa
Hamdi Mohamed

**Port of Seattle
Executive Director**

Stephen P. Metruck

SEA

Seattle-Tacoma
International
Airport

Operated by the Port of
Seattle



This email was sent by: Port of Seattle
2711 Alaskan Way, Seattle, WA, 98121 US

[Privacy Policy](#)

[Update Profile](#)

[Manage Subscriptions](#)

[Unsubscribe](#)

