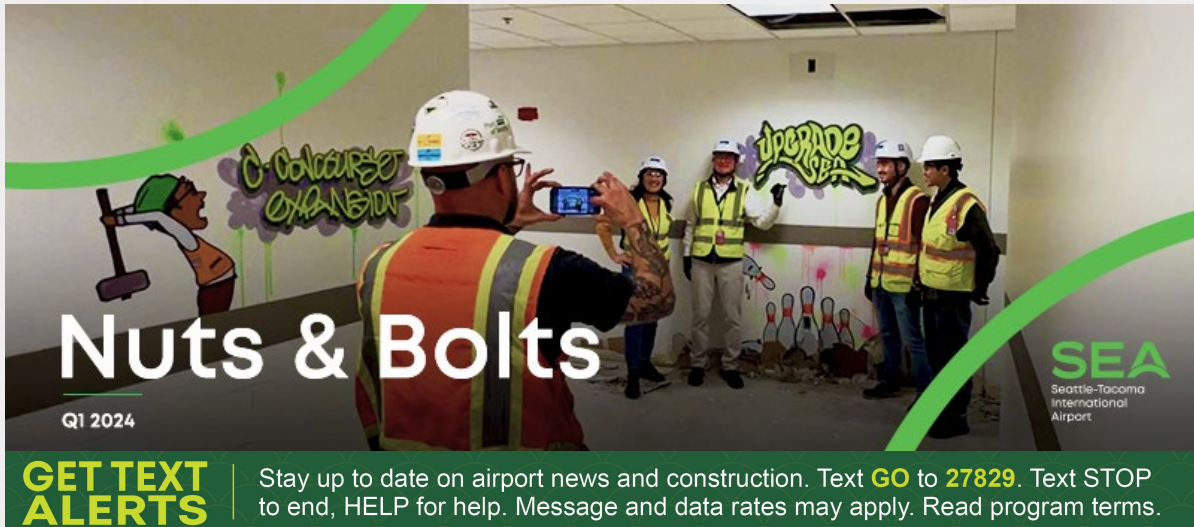


To view this email as a web page, go [here](#).



Check out the major upgrades happening at Seattle-Tacoma International Airport (SEA)!

## C CONCOURSE EXPANSION

# Big Wall, Big Vision for the C Concourse



Seattle-Tacoma  
International  
Airport

## Checking In @ SEA

### C Concourse Expansion Construction Update

UPGRADE  
**SEA**



If you've been on the C Concourse lately, you've noticed a new wall that extends from the beginning of the D Concourse, down, and around into the C Concourse, past Gate C3. Behind that wall is a major remodel as part of Upgrade SEA's C Concourse Expansion project. Art on the wall shows the future of the C Concourse — epic PNW feels, more seating and eating, and views of the great beyond. Read up on the incredible sustainability features in progress. It's just a glimpse of what's happening behind the barricade!

Watch the Checking in [video](#).

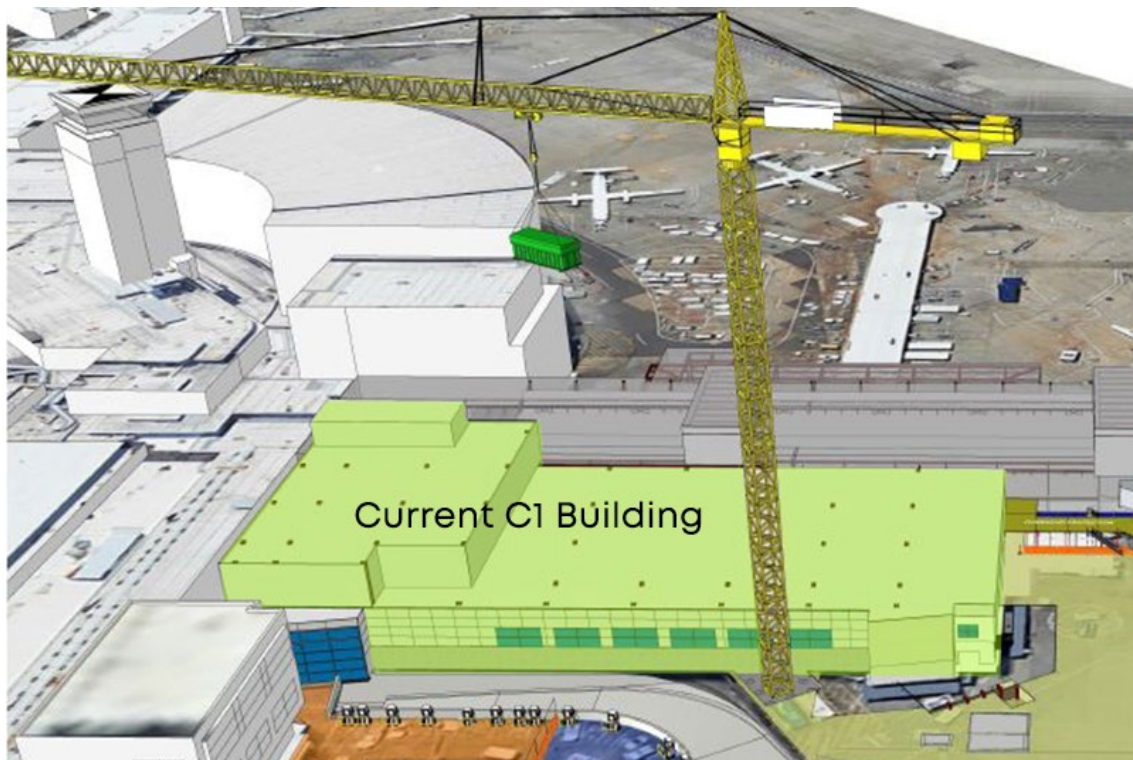
## All Work and No Play Isn't the Only SEA Way



Now let us take you behind the barricades to watch the project team celebrate a milestone in a fun new way. To kick off demolition, a groundbreaking ceremony would typically commemorate the moment. This time, the team took some “spare” time to break down walls — literally. Watch Ground Bowl-Breaking to see how the crews kicked off demolition of an interior hallway wall, one bowling ball at a time.

View the fun in this great [video](#).

## The CCE Project is Looking Up... 225 feet Up!



*Rendering courtesy of Turner Construction*

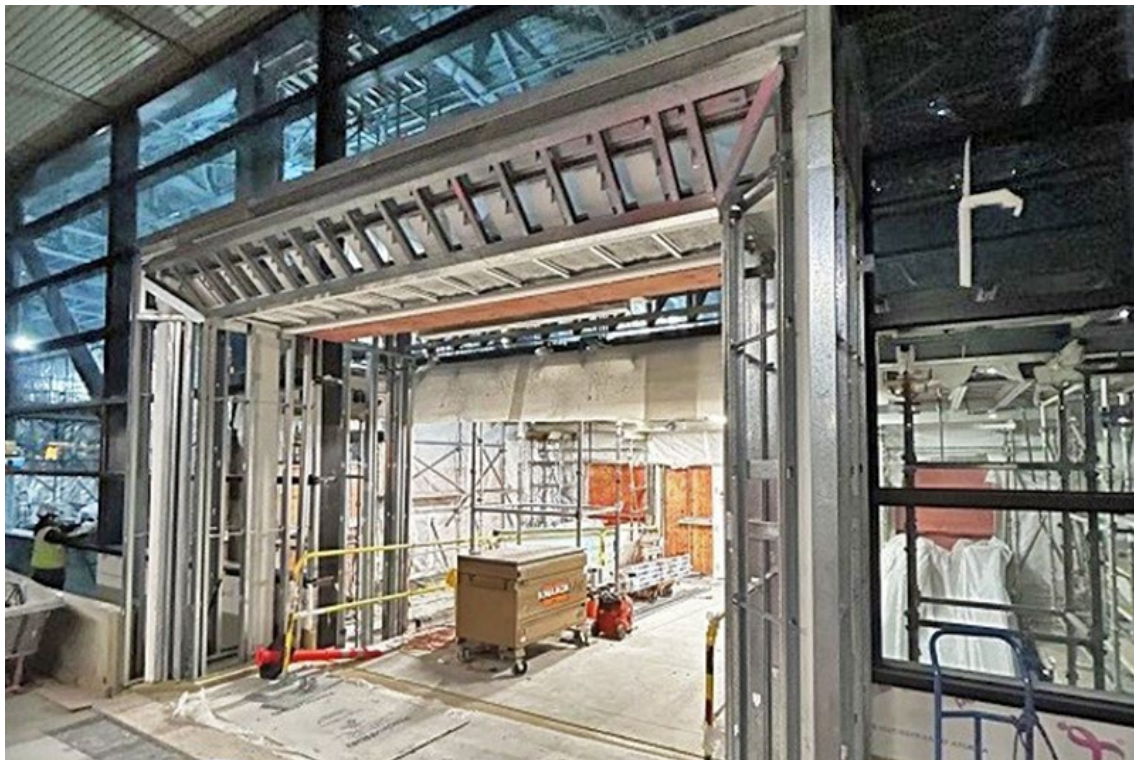
Next up for the C Concourse Expansion — crane delivery. Over a two-day period, a mobile crane and assist crane will be erecting a tower crane that will remain there into 2025 to assist with the disassembly of the current C1 building and steel erection of the new four stories. This tower crane is a Liebherr 630 EC-H 20 with a height of 225 feet and a boom length of 241 feet. This crane erection operation is being led by the project team and the Port of Seattle, the GC/CM, Turner, along with teams from Apex TC, Barnhart, Morrow, and VECA.

[Stay tuned for more CCE project updates →](#)

## **SEA GATEWAY PROJECT**

# **Front Door Facelift Making Progress**





While progress continues for the SEA Gateway Project, much of it remains behind-the-scenes. However every mini-milestone moves the project one step closer to completion. This project touches nearly every point of the main terminal, primarily on the north end and Alaska Airlines customers.

Here's what's happening:

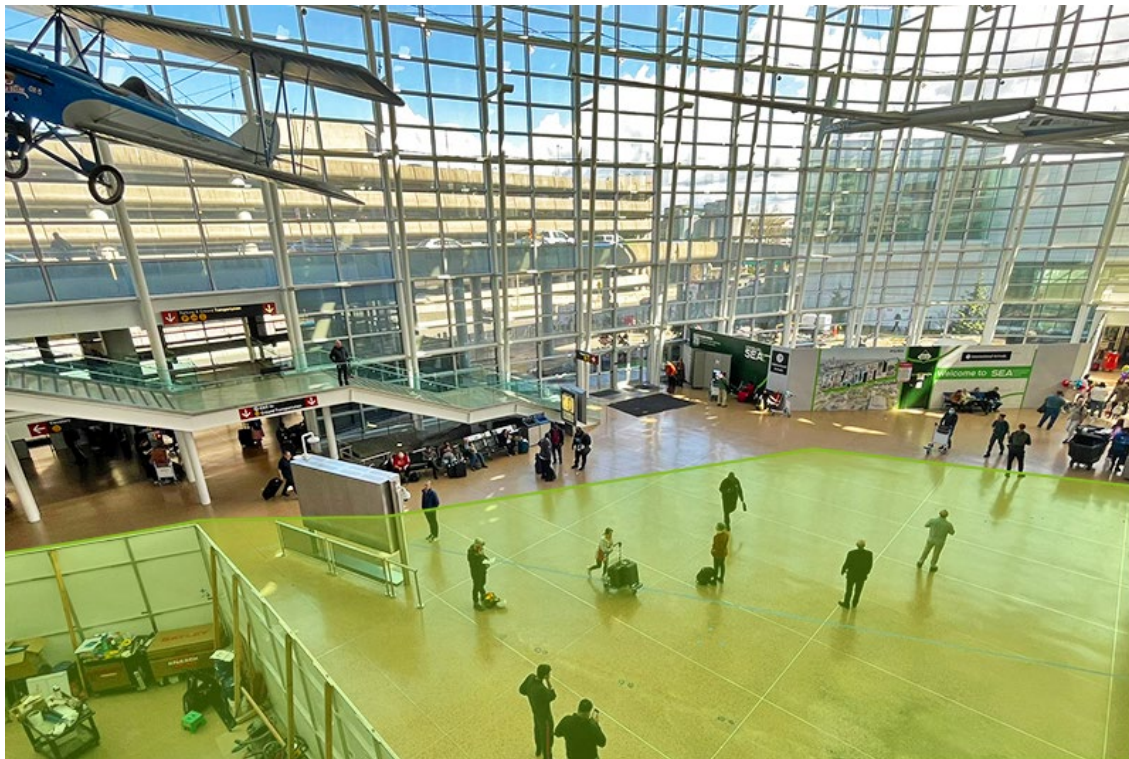
- **Doors:** The new Door 33 is framed out (pictured above), and other doors are getting an accessibility makeover. Door 20 is currently closed and once open, work will move over to Door 14.
- **Skybridges:** Skybridge construction and finishes, Skybridge 6 is currently closed, once open work will move to Skybridge 5.
- **Bag Claim Scaffolding:** Some scaffolding on the Baggage Claim Level will be removed to open some space and sightlines.
- **Ticketing Scaffolding:** Coming this summer, scaffolding will go up in the Ticketing Level between Security Checkpoints 4 and 5 to prep for work being done later this year on Checkpoint 5.
- **Promenade Check-in:** Later this summer, Alaska Airlines hopes to open up limited service check-in kiosks on the Promenade Level to help expedite the check-in process.

[Learn more about this project →](#)

## CHECKPOINT 1 RELOCATION

# Making Space for New Security

# Checkpoint



This spring, the barricades along the window wall will be removed to make space for seating and for those meeting up with their loved ones outside of the International Arrivals Facility in Gina Marie Lindsey Arrivals Hall. As soon as those barricades come down, the teams will overtake the green area pictured above and put up new barricades in order to start constructing the new Checkpoint 1. This new security checkpoint is hoping to be open towards the end of this year.

This new checkpoint will increase checkpoint capacity and speed security times during peak hours. It will be available for general screening along with TSA PreCheck and CLEAR. Its unique location will provide convenient access to the international flights at the S Concourse.

[Find out more about Checkpoint 1 Relocation →](#)

## PARKING IMPROVEMENTS

### New Reserved Parking Program Launches

## CONC. A BLDG EXPANSION FOR LOUNGES

### New Building to House Premier Lounges Tops Out





The fourth floor of SEA's Parking Garage is now reserved! ReserveSEA is part of SEA's new Reserved Parking Program that launched this March. The fourth floor was formerly known as Terminal Direct and has transitioned over to Reserved Parking. It is efficient, easy to use, and guarantees a spot on the fourth floor with quick access to the skybridges. [Reserve](#) your space now!

[Read about Reserved Parking Program →](#)



The beginning of this year brought a topping out of the brand-new building that will house premier lounge spaces. Hensel Phelps placed the last steel beam in January, capping this milestone. The building is at the south end of the airport. The top levels will feature a new Delta Sky Club Lounge while the expanded main floor will have a premier lounge experience with Club at SEA.

[Find out more details about this project →](#)

#### UPCOMING BID OPPORTUNITIES

Baggage Optimization Phase 3 - Commissioning  
S Concourse Evolution - GC/CM Construction Auditing  
Post IAF Airline Realignment (Multiple bids available)  
Apartment Sound Insulation Project  
IWTP Controls/Improvements (Facility) Combined Design  
Baggage Claim 15 & 16 Replacement  
[click for more](#)

Consulting Services  
Consulting Services  
Major Construction  
Major Construction  
Consulting Services  
Major Construction

bid opens 3/26/2024  
bid opens 3/26/2024  
bids open 4/5/2024  
bid opens 4/15/2024  
bid opens 4/19/2024  
bid opens 6/3/2024

\*all dates are subject to change

## Bid Opportunities

Find Port procurements and contract information at VendorConnect.

[Go to VendorConnect](#)

## Business Development

Interested in doing business at SEA Airport?

- Check out [Diversity in Contracting](#).
- Join a [PortGen](#) workshop to learn about new projects and network.



#### CONTACT US

Have a question or a suggestion?

Email us at [SEAcustomer@portseattle.org](mailto:SEAcustomer@portseattle.org)

Copyright © 2024

All rights reserved

**Port of Seattle  
Commission**

Ryan Calkins  
Sam Cho  
Fred Felleman  
Toshiko Hasegawa  
Hamdi Mohamed

**Port of Seattle  
Executive Director**

Stephen P. Metruck

**SEA**

Seattle-Tacoma  
International  
Airport

Operated by the Port of  
Seattle



This email was sent by: Port of Seattle  
2711 Alaskan Way, Seattle, WA, 98121 US

**Privacy Policy**

**Update Profile**

**Manage Subscriptions**

**Unsubscribe**