


To view this email as a web page, go [here](#).



**Nuts & Bolts**

Q1 2025

**GET TEXT ALERTS** | Stay up to date on airport news and construction. Text **GO** to **27829**. Text **STOP** to end, **HELP** for help. Message and data rates may apply. Read program terms.

**SEA**  
Seattle-Tacoma  
International  
Airport

Check out the major upgrades happening at Seattle-Tacoma International Airport (SEA) and learn more about [Upgrade SEA!](#)

## C CONOURSE EXPANSION

# Reaching New Heights



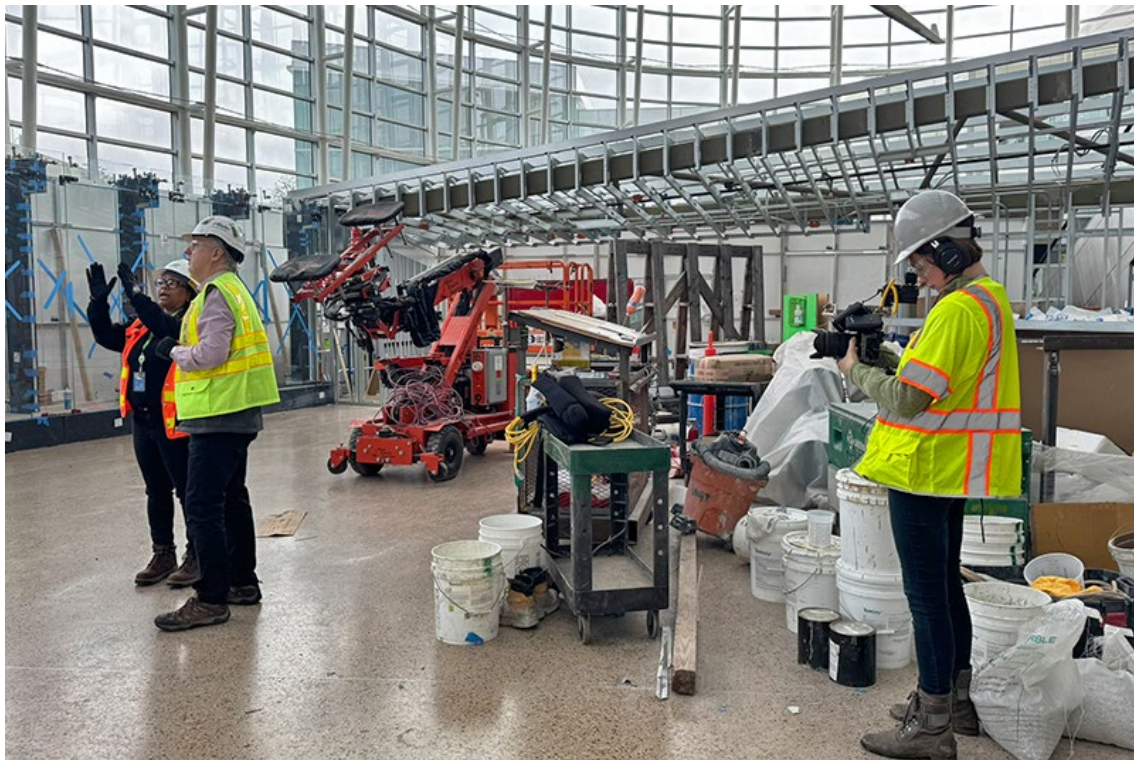
The C Concourse Expansion project hit a major milestone — topping out — at the end of 2024! The topping out ceremony marks the last steel beam being placed atop the highest point of a building's structure in its construction process. The Pacific Northwest weather decided to cooperate as crowds gathered outside to help the Port project teams, Turner Construction, Apex Steel, and other partners celebrate in style while watching that last beam go up. Learn more about the [topping out ceremony tradition](#) and watch highlights from the ceremony.

Next, the project team will finish work on the four new floors to close the building in this summer and start on the photovoltaic roof panels. Things are also shaping up for the central tree structure that the new building will revolve around.

[Stay tuned for more project updates →](#)

## CHECKPOINT 1 RELOCATION

# New Checkpoint 1 Close to Opening



The Checkpoint 1 Relocation project is inching towards the finish line as the final touches are put into place. This brand-new TSA security checkpoint is the first and only security entrance on the Baggage Claim Level at SEA. It will add five more queuing lanes and be available for general screening. It will also add even more public art, displaying about 20 pieces in a beautiful glass art wall that runs along the east side of the checkpoint.

Check out the latest [Checking in video](#) for a project progress update.

Due to SEA's small footprint, there was no more room on the Ticketing Level to add more security screening lanes. Therefore, the project team thought outside the box, one floor below it actually. It's just another creative way SEA is finding ways to make the customer journey even better. The current Checkpoint 1 on the Ticketing Level will also now remain open and continue to serve TSA PreCheck and CLEAR. This also means some changes to the way the checkpoints are numbered. Keep reading to find out more about that. And stay tuned for the Grand Opening of the new Checkpoint 1!

[Find out more about Checkpoint 1 Relocation →](#)

## SEA GATEWAY PROJECT

# Reinventing Alaska Ticketing Lobby





The SEA Gateway Project continues to take shape. The far north checkpoint (the current Checkpoint 5) closed down in 2024 in order to make room for construction on Zone 7 of the Ticketing Level. The checkpoint will be completely redesigned with an additional lane, a comfortable and calm area for travelers to recollect their belongings after security, and beautiful new artwork.

The Alaska Airlines check-in area has also been reimagined to add new Bag Tag and Bag Drop stations on the Ticketing Level and the Bridge Level if you're coming from the Parking Garage between Skybridges 4 and 6. Some of the project's first pieces of art are also getting installed on the Ticketing Level, including a colorful mosaic wrap by Sarah More, in collaboration with Tieton Mosaic, called "On a Clear Day, You Can See Forever."

[Learn more about this project →](#)

## PEOPLE AT THE PORT

# Superheroines in Hard Hats

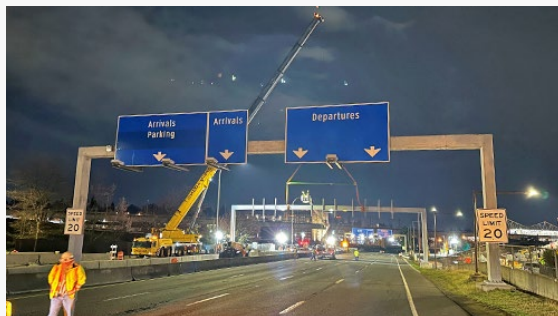


Women in the construction industry don't just wear toolbelts and safety vests — they also wear the capes of superheroines! To celebrate Women in Construction Week (March 2-8), the blog featured five women working on the construction of major capital projects at SEA Airport and Port maritime facilities. These women run point on projects like the C Concourse Expansion, SEA Gateway Project, Checkpoint 1 Relocation, Maritime Innovation Center, and more.

[Learn more about the women featured for #WICWeek25 →](#)

#### ROADWAY IMPROVEMENTS

## Enhanced Signs, Expanded Roadway



Crews successfully replaced two overhead sign bridges on the southbound Airport

#### SEA AIRPORT CHECKPOINTS

## New Checkpoint, New Numbers



There's a new checkpoint coming to SEA and a new numbering system to keep them



Expressway with minimal traffic impacts. These new sign bridges span the length of six lanes, versus the original four lanes. This is in preparation for the roadway expansion to add those additional two lanes, creating dedicated lanes for the Airport Parking Garage, and Shuttles and Courtesy Vehicles to improve vehicle access to the airport. This will also help alleviate congestion and enhance roadway safety.

Also still to come, some more artwork along the drive into the airport, as well as new art incorporated into the Rental Car Facility bussing area on the north end.

[See what's to come for this project →](#)

sequential. Here's the new system starting on April 17:

- **Checkpoint 1:** Opening this spring on the Baggage Claim Level
- **Checkpoint 2:** The old Checkpoint 1 located just above Gina Marie Lindsey Hall on the south end of the Ticketing Level.
- **Checkpoints 3-5:** The numbers continue in a northern direction heading towards where you enter the airport drive.
- **Checkpoint 6:** The farthest north, located in the Alaska Ticketing area, and will remain closed while under construction as part of the SEA Gateway Project.

[Stay up to date on checkpoints →](#)

## UPCOMING BID OPPORTUNITIES

Baggage Optimization - C Concourse Transfers  
Airport Food and Beverage Introductory Projects  
Widen Arrivals Bus Canopy  
North Employee Parking Lot (NEPL) Improvements Phase III  
400Hz C and D Concourse - BES

Major Construction  
Major Construction  
Major Construction  
Major Construction  
Major Construction

bid opens 4/4/2025  
bid opens 4/7/2025  
bid opens 4/8/2025  
bid opens 4/10/2025  
bid opens 4/17/2025

[click for more](#)

\*all dates are subject to change

## Bid Opportunities

Find Port procurements and contract information at VendorConnect.

[Go to VendorConnect](#)

## Business Development

Interested in doing business at SEA Airport?

- Check out [Diversity in Contracting](#).
- Join a [PortGen](#) workshop to learn about new projects and network.

**UPGRADE SEA**

**RESTROOM RENOVATION**

**SEA GATEWAY PROJECT**

**C CONCOURSE EXPANSION**

**CHECKPOINT 1 RELOCATION**

Find out more about Upgrade SEA projects

## CONTACT US

Have a question or a suggestion?

Email us at [SEAcustomer@portseattle.org](mailto:SEAcustomer@portseattle.org)

Copyright © 2025

All rights reserved

**Port of Seattle  
Commission**

Ryan Calkins  
Sam Cho  
Fred Felleman  
Toshiko Hasegawa  
Hamdi Mohamed

**Port of Seattle  
Executive Director**

Stephen P. Metruck



Seattle-Tacoma  
International  
Airport

Operated by the Port of  
Seattle



This email was sent by: Port of Seattle  
2711 Alaskan Way, Seattle, WA, 98121 US

**[Privacy Policy](#)**

**[Update Profile](#)**

**[Manage Subscriptions](#)**

**[Unsubscribe](#)**