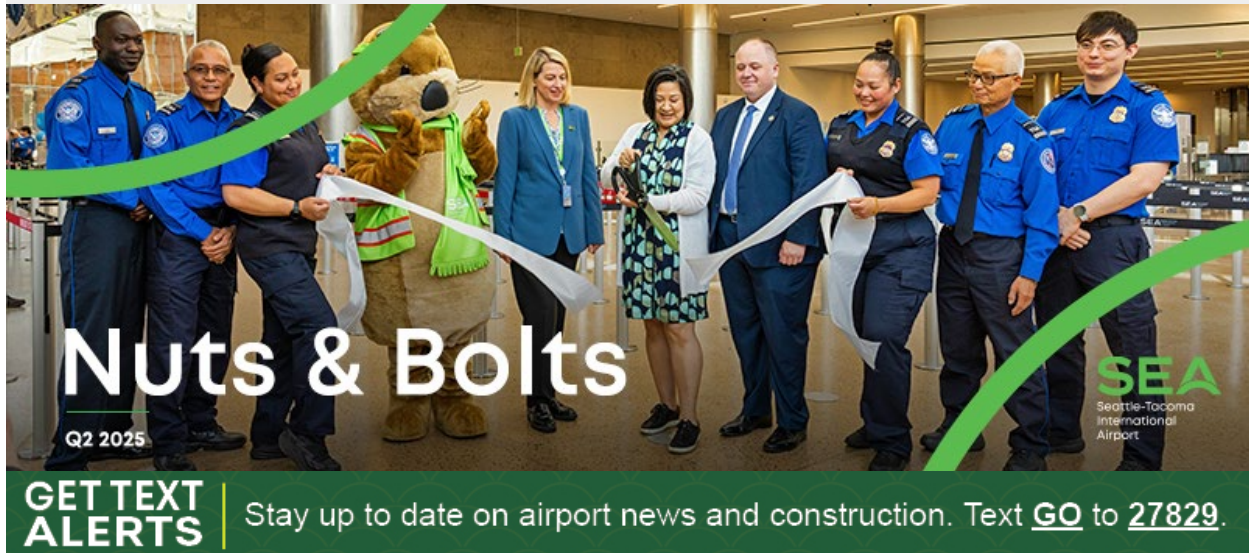


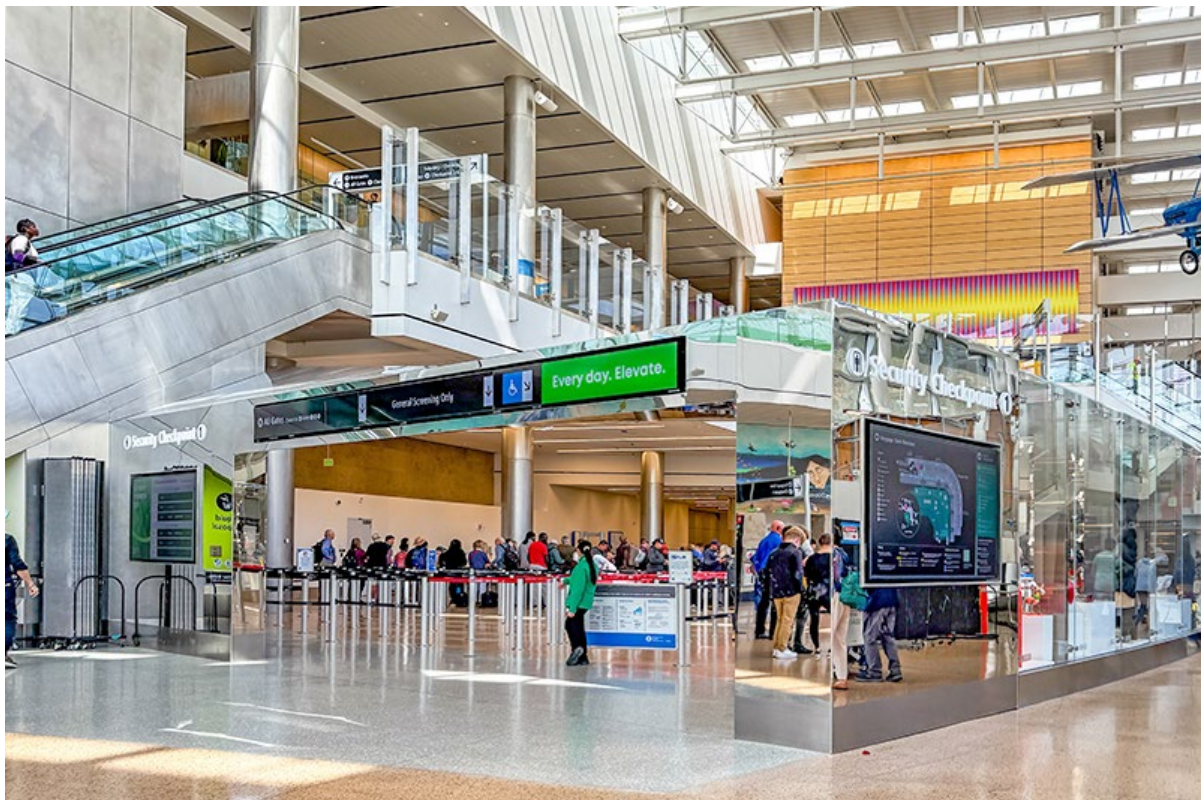
To view this email as a web page, go [here](#).



Check out the major upgrades happening at Seattle-Tacoma International Airport (SEA) and learn more about [Upgrade SEA!](#)

#### [CHECKPOINT 1 RELOCATION](#)

## New Checkpoint 1 Now Serving General Screening





A bright and shiny new [Checkpoint 1](#) opened to the public on Friday, June 6, 2025, as the [Checkpoint 1 Relocation](#) project nears completion. This security checkpoint adds five lanes and serves general screening daily from 4 a.m. to 8 p.m.

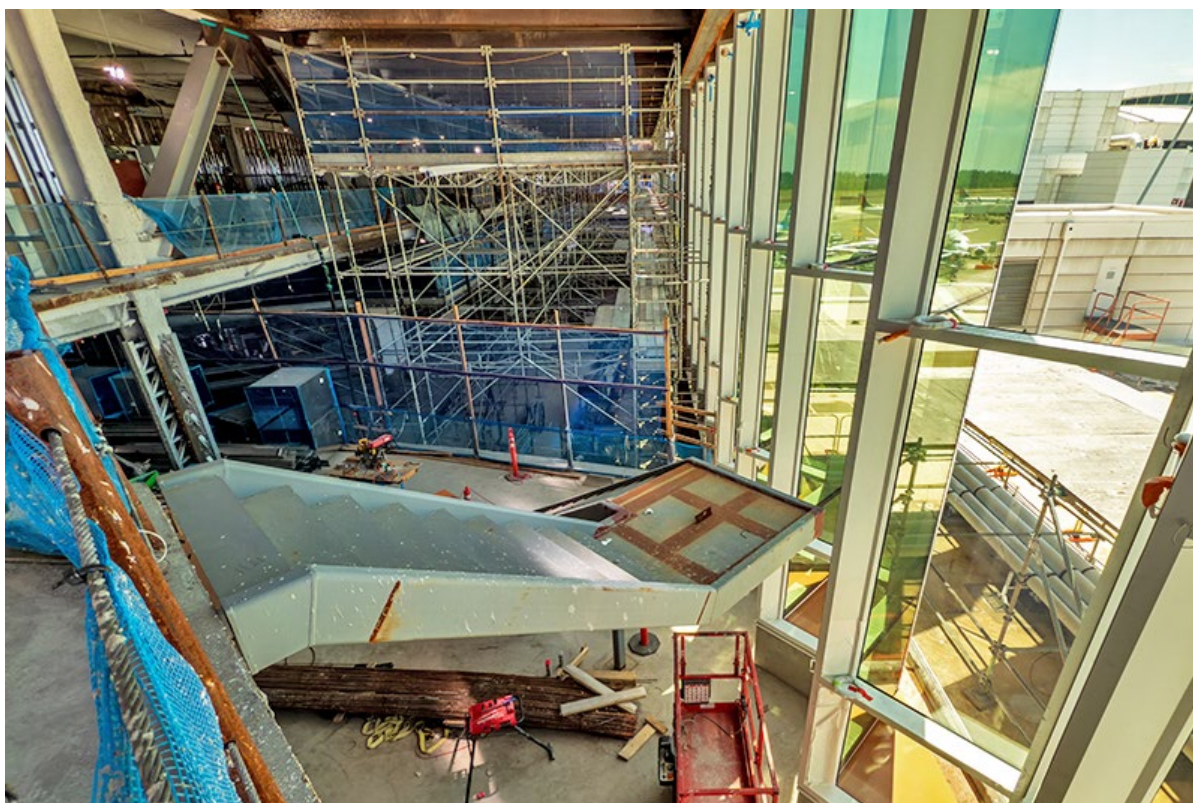
This is a unique checkpoint as it's the one and only located on the lower Baggage Claim level. Insider tip: if you don't have any bags to check, get dropped off on the Lower Arrivals Drive curbside during congested times for quick access to the checkpoint. You can catch an escalator straight up to the A and B concourses or ride the escalator down to catch the SEA Underground train out to the S Concourse or connect to C, D and N concourses. As with all security screening, all checkpoints lead to all gates. This new Checkpoint 1 gives you another option to build your own journey of efficient travel through SEA.

Just a reminder that all checkpoints were renumbered earlier this year with this addition of a brand-new Checkpoint 1. Visit our [website](#) and choose the checkpoint that best suits you.

[Here are five things to know about the new Checkpoint 1 →](#)

### [C CONCOURSE EXPANSION](#)

## C Concourse Expansion Builds a Window to the World



If you've been through SEA lately, you might have noticed the new structure and windows in the form of a folded façade window wall rising just off the C Concourse.

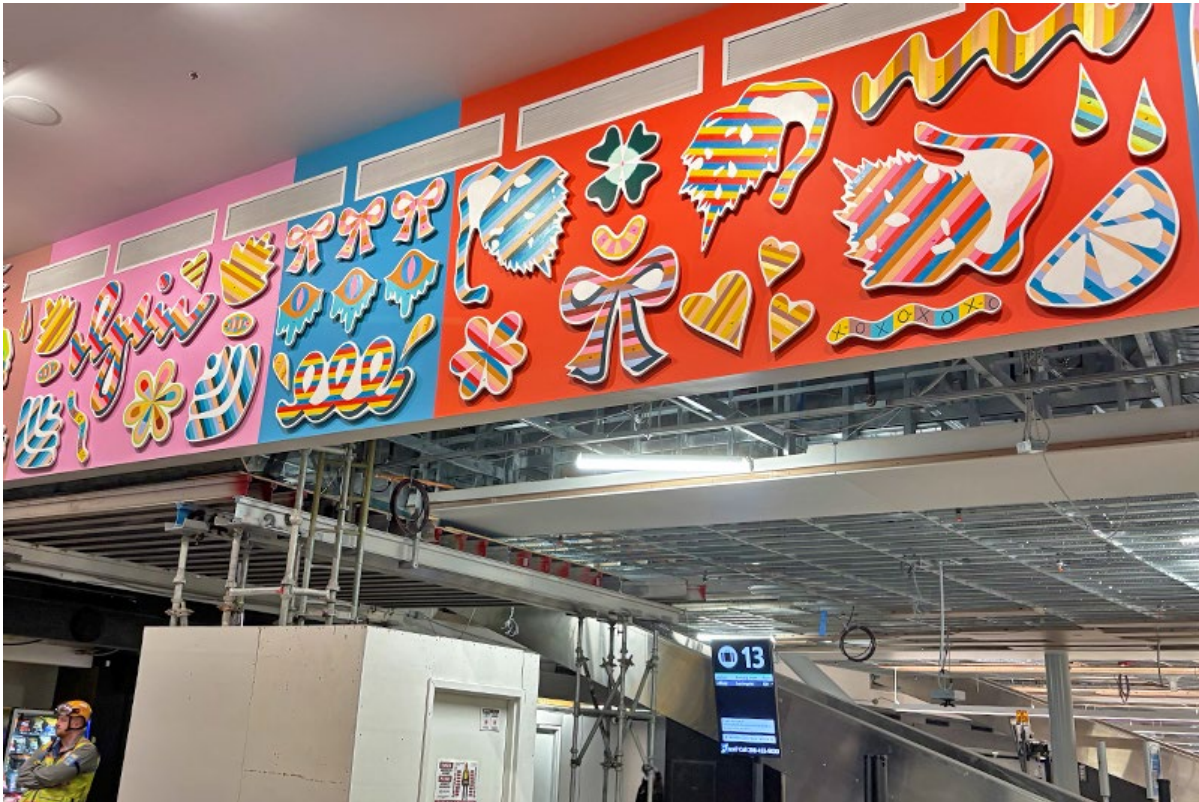
This new four-story C Concourse Expansion is almost ready for an interior build-out which will include tons of seating, [13 new restaurant and retail spaces](#), a performance area, a viewing deck, and so much more. It's also getting the sustainability-focused treatment with this folded façade window wall with electrochromic glazing which tints based on lighting and a rooftop solar array will be installed this summer. Take a [video virtual tour](#) to see the vision for the updated and upgraded C Concourse.

Check back on our social channels and follow the [Port of Seattle's YouTube channel](#) for a Checking in video coming soon about the folded façade window wall.

[Stay tuned for more project updates →](#)

#### **SEA GATEWAY PROJECT**

## **More Art Popping Up for SEA Gateway Project**



The SEA Gateway Project is transforming the far north end of the main terminal on every level. With ever-changing construction zones, barricades, and scaffolding, progress might be hard to see on the public side, but just look for the art.

While construction crews are busy behind those barricades transforming SEA's front door, the SEA Public Art team is hard at work getting new art installed, the most recent coming from local artist Julie Alpert. The pop-up wall art was recently installed by Bag Carousel 13, near Skybridge 4. It's made of maple plywood and painted in colorful patterns, creating a fun visual marker on the busy Baggage Claim level.

Look for the SEA Gateway Project to hit some milestones later this year with a refreshed north end Ticketing level featuring a giant digital art display, as well as some more art coming on other skybridges. Work continues on the ADA doors on the Departures Drive, terrazzo replacements, carousel and ceiling work, as well as even more art on its way.

[Learn more about this project →](#)

#### **S CONCOURSE EVOLUTION**

## **An Early Glimpse into the Future of S Concourse**





The S Concourse Evolution project is in motion with design teams developing the interior and exterior redesign of the S Concourse. While this project is not adding gates, it is completely redesigning the look and feel of the S Gates and modernizing it for traveler needs. The main focus for the project is to enhance structural and seismic systems and upgrade major building systems.

The project completed 30% design work earlier this year and the AECOM and HOK teams provided an early design rendering [fly-through video](#). This is, of course, a very early design with many more changes to come as the project progresses towards the next design phase, hitting 60% design later this year. The project team recently received Commission approval for a funding increase to complete the design of the base building and solicit bids for professional services and early work. Construction is expected to begin later in 2026, with major construction on the S Concourse forecast for 2027.

[Learn what's to come for the S Concourse →](#)

#### **ROADWAY IMPROVEMENTS**

### **Departures Drive Preps for Move**



This summer, the southbound Airport Expressway will get a slight shift. Already this year, Air Cargo

#### **RESTROOM RENOVATION**

### **Newly Upgraded D11 Restroom Opens**



Another restroom renovation wrapped up near Gate D11. This redesign includes a men's and women's

Road has shifted into its permanent alignment next to the new retaining wall just to the west. Next up will be shifting both lanes of Departures Drive to where Air Cargo Road used to be, which will result in some minor overnight traffic impacts to keep crews safe. This will make way for two new lanes to help alleviate roadway congestion and enhance roadway safety. Art is also coming soon for this project.

[See what's to come for this project →](#)

#### CONC. A BLDG EXPANSION FOR LOUNGES

## Delta Opens New Premier Lounges



This project hit a major milestone with Delta Air Lines celebrating the opening of the new Delta One and Delta Sky Club. Media got a sneak peek of the lounges on Tuesday, June 24, with a full opening of their Sky Club on Wednesday, June 25 and the Delta One experience opening on June 26. As part of this project, a new shell space was created to expand the existing Club SEA by almost 14,000 square feet. Construction on Club SEA is anticipated this summer with a full opening Q2 of 2026.

[Find out more about this project →](#)

restroom, as well as two family restrooms and a water fill station. Brand-new artwork adorns the exterior as well as inside both the men's and women's restrooms with art from Einar and Jamex De La Torre, also known as the De La Torre Brothers. There is one restroom still to open this summer by Gate D1, before Phase 5 of the Restroom Renovation project closes out.

[Check out all the potty talk →](#)

#### DIVERSITY IN CONTRACTING

## Port's Business Accelerator Program



### Application Deadline - June 30!

Are you a woman, minority, or disadvantaged business owner in construction, engineering, architecture? If so, this program is for you! The Port of Seattle Business Accelerator is a program that will give you the tools, visibility, and support you need to grow, plus a mentor who wants you to succeed. The program, which takes place from September to December, offers eight workshop sessions, mostly in-person with some virtual.

[Apply today before it's too late →](#)

### UPCOMING BID OPPORTUNITIES

3rd Fl. Ground Transportation Booth Enhancements  
HVAC Mechanical and Plumbing Portwide Unit Price 2025  
Tenant ADR Core and Shell Renovation (TASCR) - Design  
Compactor Capacity at Gate E-100 Area

Major Construction  
Major Construction  
Consulting Services  
Major Construction

bid opens 6/24/2025  
bid opens 6/26/2025  
bid opens 6/27/2025  
bid opens 7/21/2025

[click for more](#)

*\*all dates are subject to change*

### Bid Opportunities

Find Port procurement and contract information at VendorConnect.

[Go to VendorConnect](#)

### Business Development

Interested in doing business at SEA Airport?  
Check out [Diversity in Contracting](#).

[Join a PortGen workshop](#) to learn about new projects and network.

SIDE  
BILITY &  
ETY

# UPGRADE SEA

RESTROOM  
RENOVATION

SEA GATEWAY  
PROJECT

CHECKPOINT 1  
RELOCATION

C CONCOURSE  
EXPANSION

Find out more about Upgrade SEA projects

#### CONTACT US

Have a question or a suggestion?

Email us at [SEAcustomer@portseattle.org](mailto:SEAcustomer@portseattle.org)

Copyright © 2025

All rights reserved

**Port of Seattle  
Commission**

Ryan Calkins  
Sam Cho  
Fred Felleman  
Toshiko Hasegawa  
Hamdi Mohamed

**Port of Seattle  
Executive Director**

Stephen P. Metruck

**SEA** Seattle-Tacoma  
International  
Airport  
Operated by the Port of Seattle



This email was sent by: Port of Seattle  
2711 Alaskan Way, Seattle, WA, 98121 US

[Privacy Policy](#)

[Update Profile](#)

[Manage Subscriptions](#)

[Unsubscribe](#)