

Puget Sound Gateway Program

SR 509 Completion Project

Highline Forum
November 19, 2025

JOHN WHITE, PE
ANDREY CHEPEL, PE

PROGRAM ADMINISTRATOR
SR 509 PROJECT CONSTRUCTION MANAGER

Puget Sound Gateway Program



The **Puget Sound Gateway Program** is composed of two projects: the SR 167 Completion Project in Pierce County and the SR 509 Completion Project in King County.

- Essential connections to the ports of Tacoma and Seattle
- Ensure people and goods move more reliably through the Puget Sound region
- Enhance the state's economic competitiveness by connecting the state's largest ports to key distribution centers

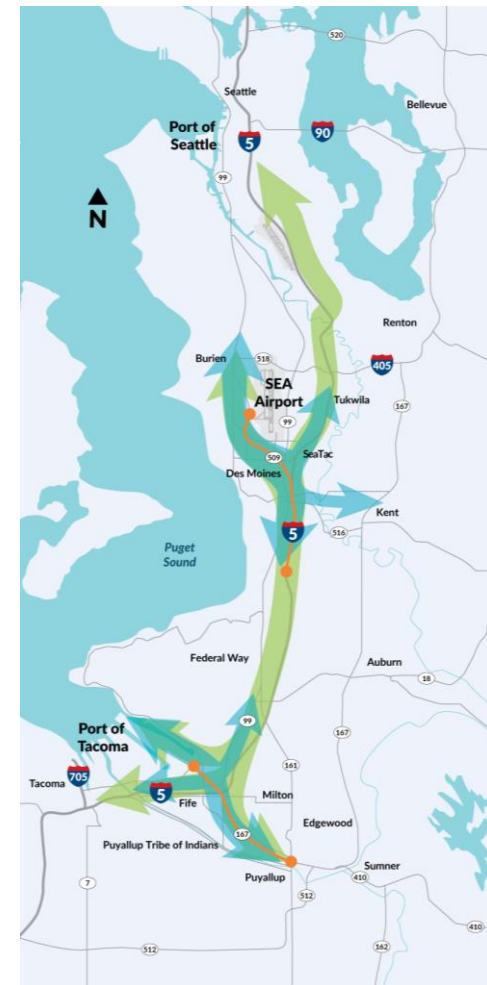
Delivering the projects under one program allows WSDOT to realize efficiencies in planning, environmental review, design, and construction.

Gateway Program progress

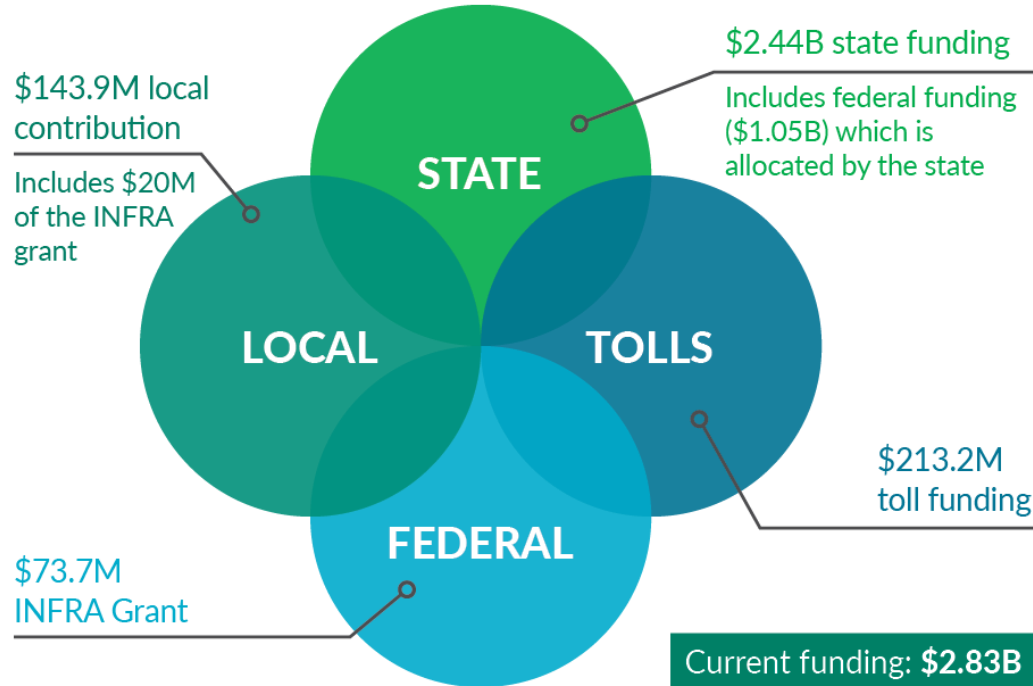
D-B CONTRACTS	STAGE 1a	STAGE 1b	STAGE 2
SR 509	Open to traffic	Open to traffic	Under Construction
SR 167	Open to traffic	Under construction	Stage 2a Under Construction ----- Stage 2b In Phase 1 of Progressive Design Build Contract

- **Clear Creek Fish Barrier Mitigation**

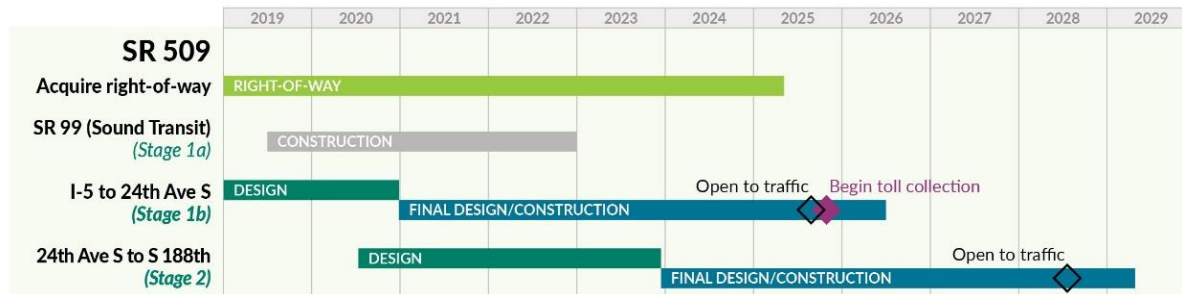
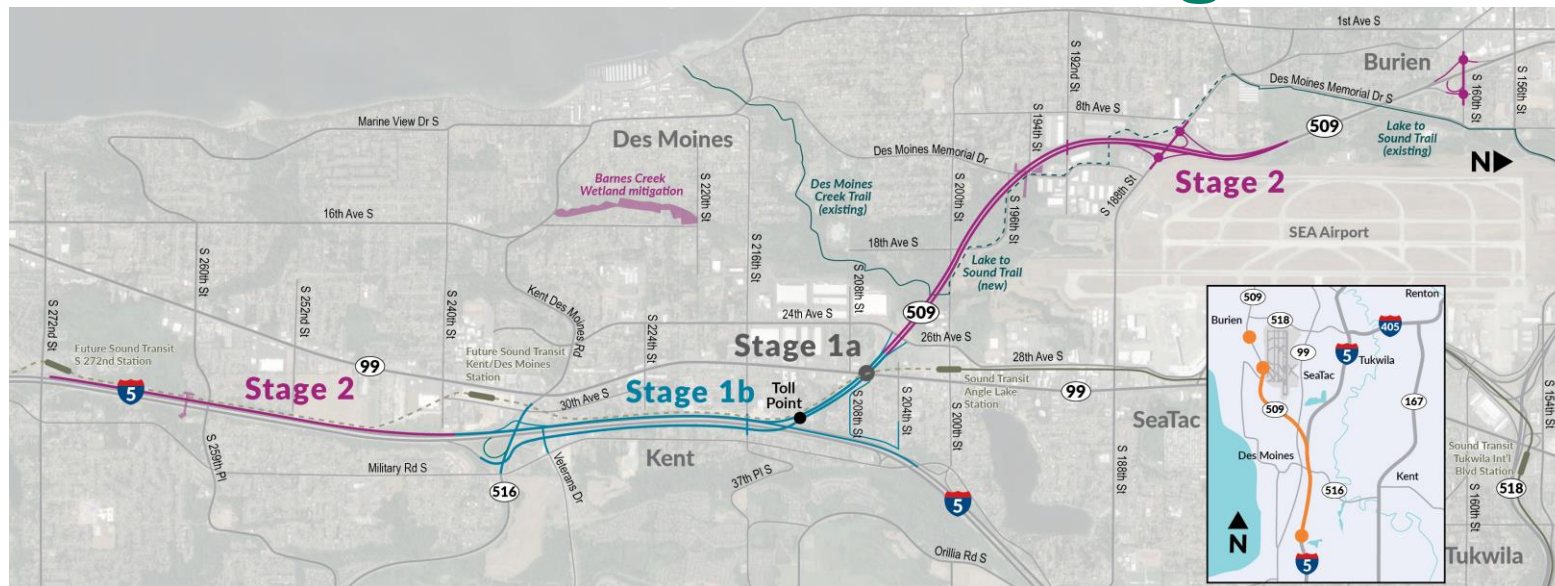
- Design-bid-build
- Project timeline: 2026-2028



Puget Sound Gateway Program funding



SR 509 construction stages



First stage of SR 509 – open to traffic!

I-5 to 24th Avenue South – New expressway



How is the new expressway performing?

- People are using the expressway during peak periods.
- Tolls vary by time of day between \$1.20 to \$2.40 with Good To Go! passes.
- WSDOT continues to monitor traffic volumes on the new expressway and surrounding roadways.

Average Toll Volumes (Tues – Thurs)			
Location	Analysis Period	Northbound	Southbound
SR 509 Toll Point	AM Peak	820	240
	PM Peak	360	1,800
	Daily Total	2,690	3,570



SR 509 Completion Project – Stage 1b & 2

24th Avenue South

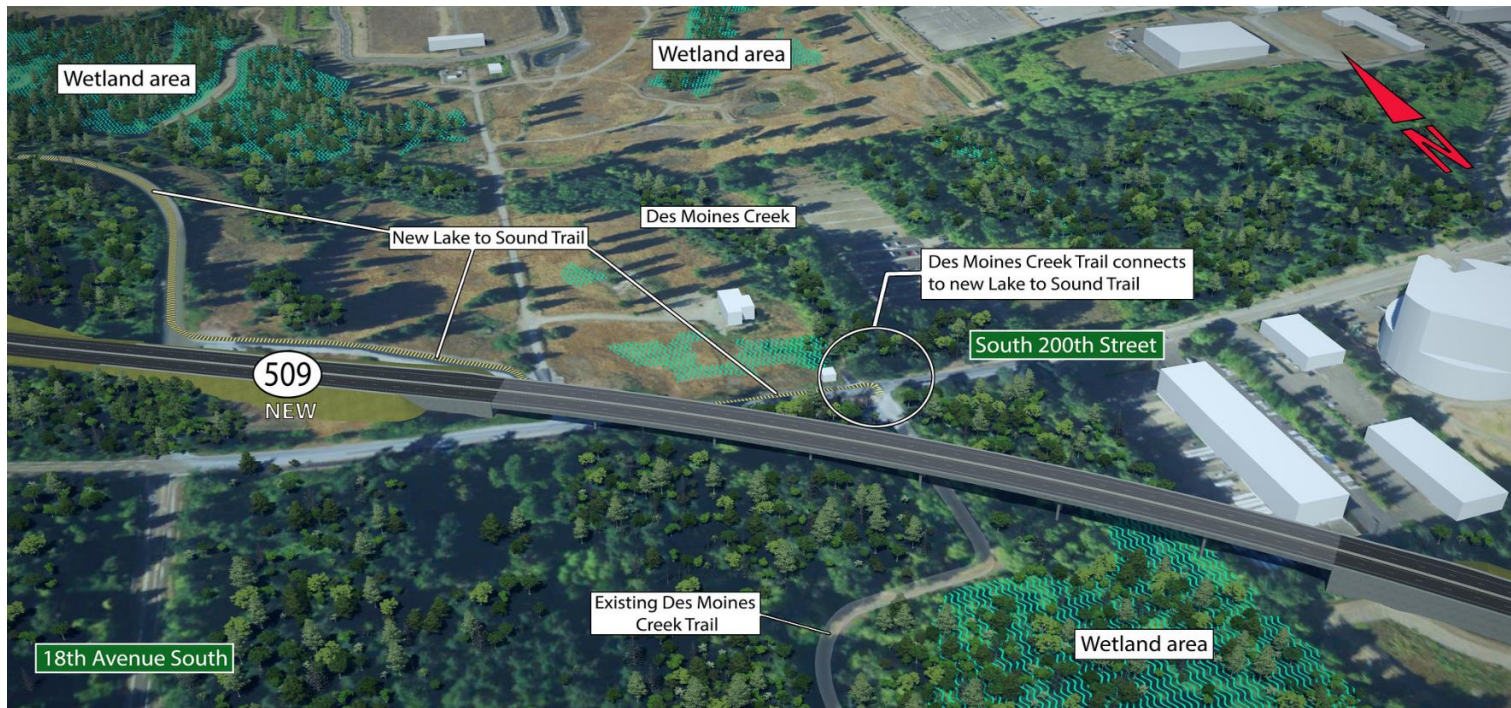
- 24th Avenue South in SeaTac, WA marks the spot where two construction stages (Stage 1b and Stage 2) meet for the SR 509 Completion Project.
- 24th Avenue South is a partial diamond interchange, with an off-ramp from northbound SR 509 and an on-ramp to southbound SR 509.



SR 509/24th Avenue South Interchange

SR 509 Completion Project – Stage 2

Bridge over South 200th Street and Des Moines Creek Trail



SR 509 Completion Project – Stage 2

Bridge over South 200th Street and Des Moines Creek Trail



Crews build column for the future SR 509 bridge over Des Moines Creek Trail and South 200th Street

SR 509 Completion Project – Stage 2

SR 509 Bridge over Des Moines Memorial Drive



A temporary bridge deck over Des Moines Memorial Drive allowed crews to move into a work zone near South 192nd Street while limiting heavy machinery crossing the road.

SR 509 Completion Project – Stage 2

South 192nd Street Bridge



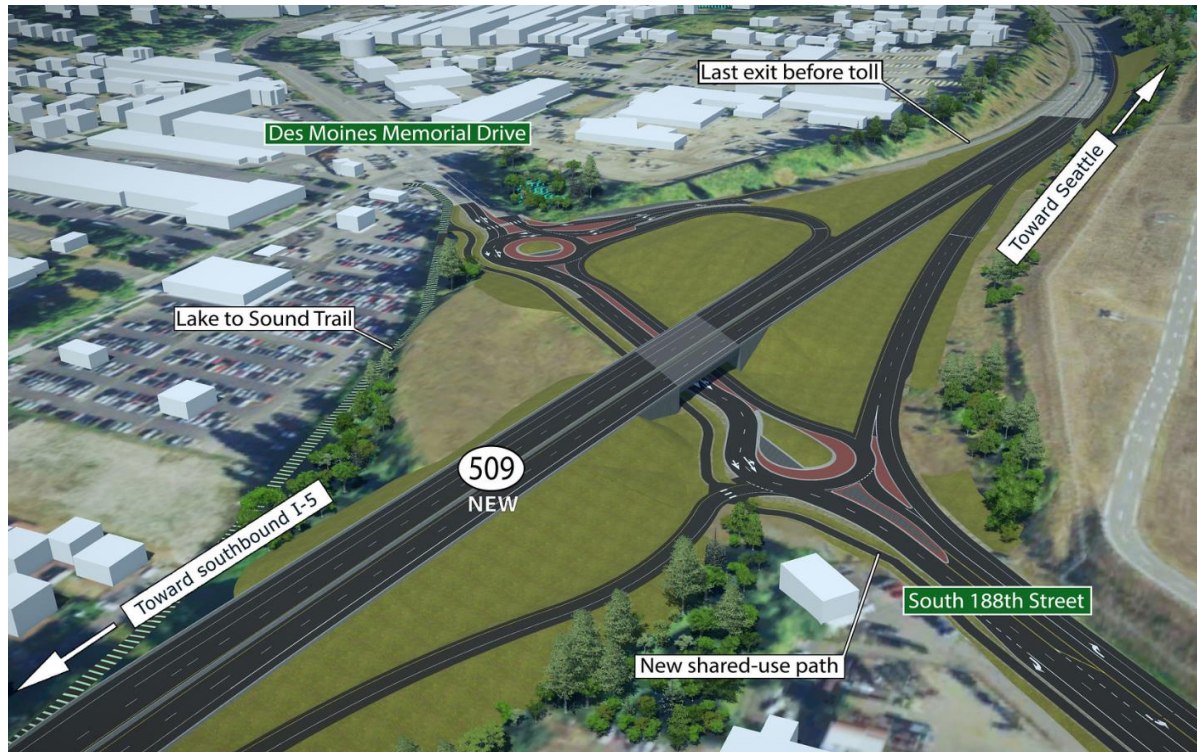
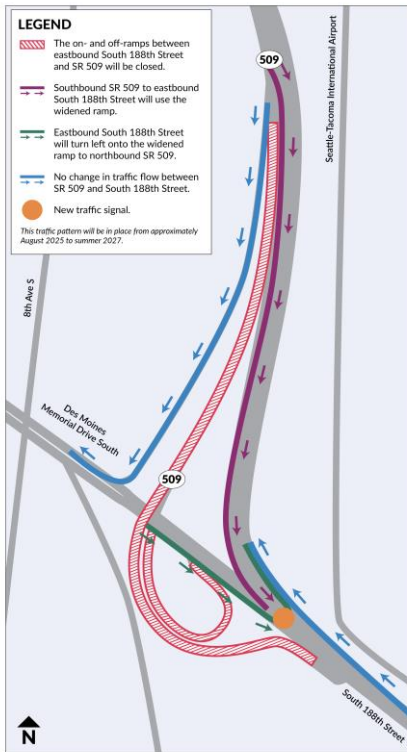
The new South 192nd Street bridge will pass over the new SR 509 expressway



Crews build abutment walls for the new South 192nd Street bridge

SR 509 Completion Project – Stage 2

South 188th Street interchange



SR 509 Completion Project – Stage 2

South 160th Street interchange



Crews built two new roundabouts at the South 160th Street



Crews placed panels for a new noise wall at South 160th Street in August

Questions?

More information:

John White, PE

Puget Sound Gateway Program Administrator

(206) 805-2966

John.White@wsdot.wa.gov

Andrey Chepel, PE

SR 509 Construction Engineering Manager

(206) 709-6970

Andrey.Chepel@wsdot.wa.gov